

South Dakota State University
**Open PRAIRIE: Open Public Research Access Institutional
Repository and Information Exchange**

South Dakota County Profiles: 2007

SDSU Census Data Center

9-27-2007

Campbell County

W. Trevor Brooks
South Dakota State University

Follow this and additional works at: https://openprairie.sdstate.edu/census_data_county-profiles

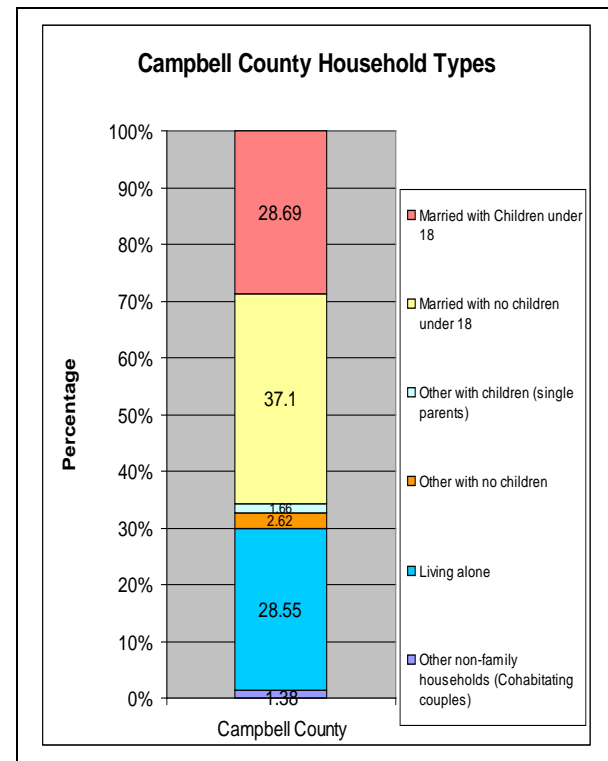
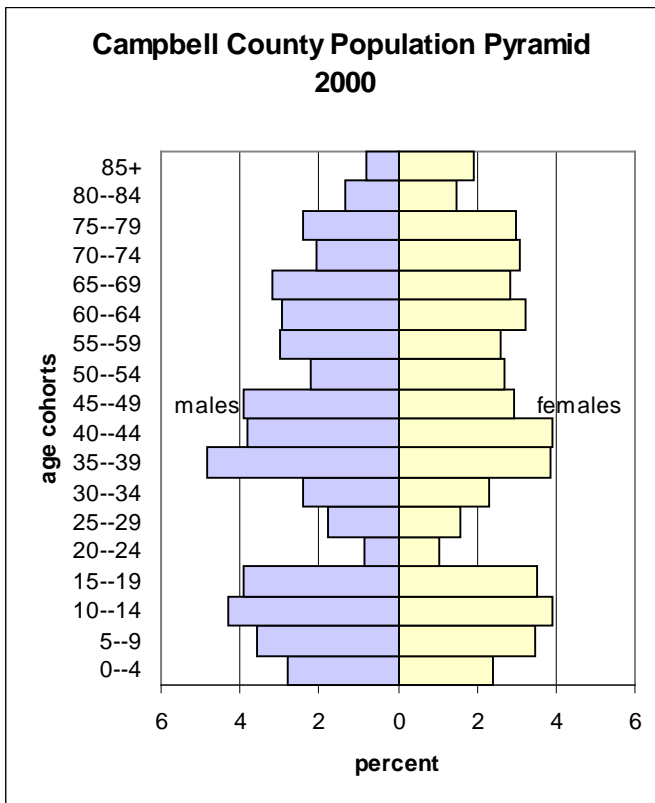
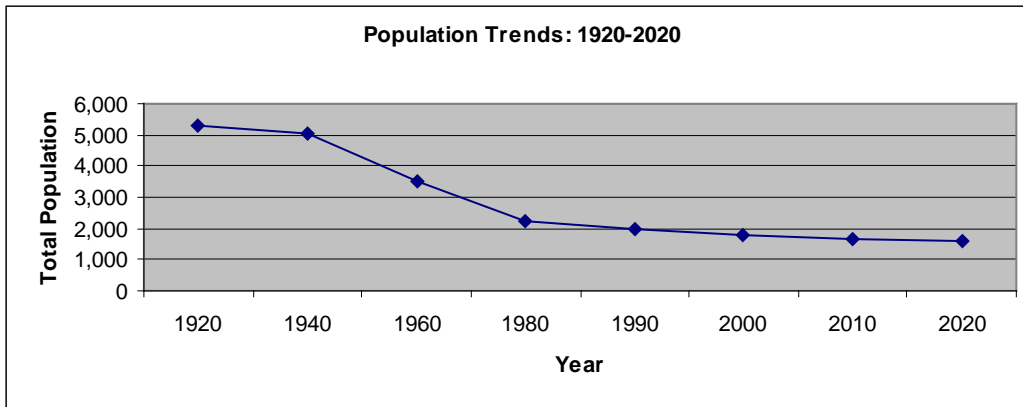
Recommended Citation

Brooks, W. Trevor, "Campbell County" (2007). *South Dakota County Profiles: 2007*. 10.
https://openprairie.sdstate.edu/census_data_county-profiles/10

This Other is brought to you for free and open access by the SDSU Census Data Center at Open PRAIRIE: Open Public Research Access Institutional Repository and Information Exchange. It has been accepted for inclusion in South Dakota County Profiles: 2007 by an authorized administrator of Open PRAIRIE: Open Public Research Access Institutional Repository and Information Exchange. For more information, please contact michael.biondo@sdstate.edu.

Campbell County Population Trends

1920	1940	1960	1980	1990	2000	2010	2020
5,305	5,033	3,531	2,243	1,965	1,782	1,671	1,585

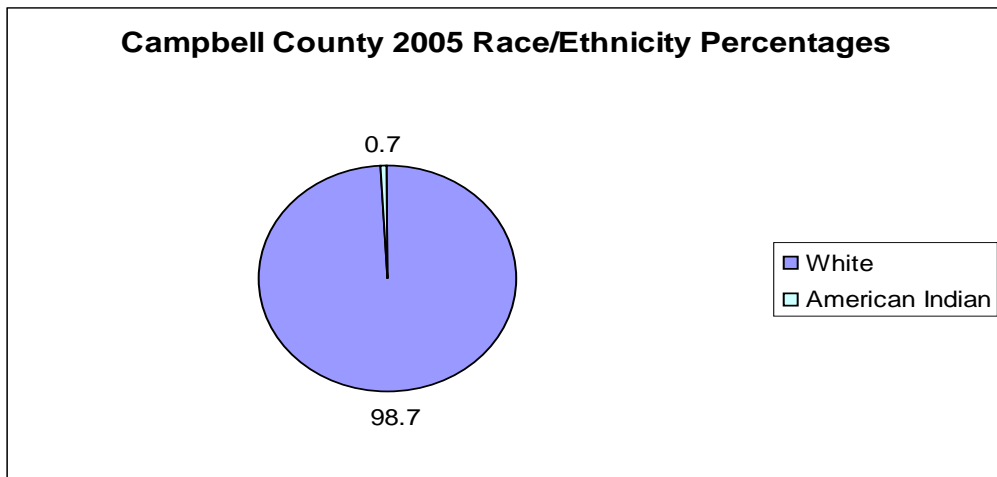


Where People Live in 2000 (by percent)				
	South Dakota	Campbell	McPherson	Walworth
Urban	51.92	0	0	58.59
Rural-Farm	7.72	28.90	23.31	8.94
Rural-Non farm	40.36	71.10	76.79	32.47

Campbell County Population Highlights

- From 1990 to 2000, Campbell County **lost 183 residents**, which was a **9.3% decrease** in its total population.
- From 1990 to 2000, Campbell County **lost 240 residents to out-migration**, which was a **12.2% decrease** in its total population.
- From the population pyramids, we can see that many residents aged 20-34 are leaving Campbell County.
- **26.43%** of Campbell County's residents are **under the age of 18**, while **22.11%** are **aged 65+**.
- Campbell County's **median age is 41.9**. This is younger than both McPherson and Walworth counties.
- Campbell County's **sex ratio is 100.68**, meaning there are about as many males as there are females. This is higher than both McPherson and Walworth counties.
- Campbell County's **fertility rate is 35.2** births for every 1,000 females aged 15-44. This is the lowest fertility rate in the state of South Dakota.

Race/Ethnicity in Campbell County



Campbell County Agriculture in 2002

- Campbell County had **293 farms**, which was a **5.4% increase** from 1997.
- Campbell County's **average farm size was 1,293 acres**. This is smaller than McPherson, but larger than Walworth.
- Campbell County's **average net farm income was \$27,964**. This is lower than both McPherson and Walworth counties.

Campbell County Economics in 2000

- Campbell County's **per capita income was \$14,117**. This is higher than McPherson, but lower than Walworth.
- Campbell County's **median household income was \$28,793**. This is higher than both McPherson and Walworth counties.
- **14.8%** of Campbell County's residents **aged 25+ had received a B.S. degree or higher**. This is higher than McPherson, but lower than Walworth.
- **14.04%** of Campbell County's residents are living **at or below the official poverty line**. This compares with 13.18% for the state of South Dakota, 22.64% for McPherson County, and 18.25% for Walworth County.
- **1.06%** of Campbell County's **children under the age of 5** are living **at or below the official poverty line**. This compares with 19.77% for the state of South Dakota, 17.65% for McPherson County, and 34.44% for Walworth County.
- **6.7%** of workers in Campbell County **commute to work from another county**. This is lower than both McPherson and Walworth counties.

Campbell County Employment by Industry

Top Industries (in terms of numbers)	Percentage	Number
Agriculture	29.83	250
Educational, health, and social services	20.88	175
Retail	8.35	70
Manufacturing	7.52	63
Construction	5.13	43
Public Administration	3.82	32
Total		838

Income Distribution

	South Dakota	Campbell	McPherson	Walworth
Total:	290,336	718	1,239	2,505
Less than \$10,000	30,881	120	264	387
\$10,000 to \$14,999	22,421	77	151	205
\$15,000 to \$19,999	22,190	50	135	299
\$20,000 to \$24,999	24,633	71	120	219
\$25,000 to \$29,999	22,190	55	92	230
\$30,000 to \$34,999	21,694	46	105	197
\$35,000 to \$39,999	19,408	55	65	153
\$40,000 to \$44,999	19,077	53	61	133
\$45,000 to \$49,999	16,675	36	55	110
\$50,000 to \$59,999	27,809	59	85	194
\$60,000 to \$74,999	26,008	41	37	187
\$75,000 to \$99,999	20,150	36	32	108
\$100,000 to \$124,999	7,597	13	12	58
\$125,000 to \$149,999	3,493	3	16	5
\$150,000 to \$199,999	2,872	0	5	0
\$200,000 or more	3,238	3	4	20

Data compiled by:

W. Trevor Brooks
 Rural Life and Census Data Center
 South Dakota State University

Sources:

South Dakota Data Center (Vermillion, SD)
 South Dakota Labor Market
 U.S. Census of Agriculture (2002)
 U.S. Census Bureau (2000)