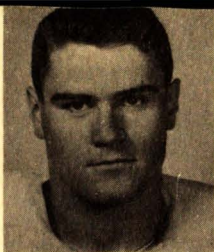


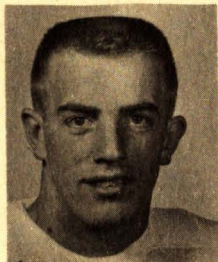
FORECAST

254

Lee Bondhus
Co-captain



Ray Gaul
Co-captain



1960 football

SOUTH DAKOTA STATE COLLEGE

	BEMIDJI STATE	KANSAS STATE	MONTANA STATE	AUGUSTANA	N. D. U.	S. D. U.	N. D. S.	MORNINGSIDE	ISTC	COLORADO STATE	
SEPT. 10	SDSC at Brookings *			Gustavus Adolphus at Sioux Falls	Montana U. at Grand Forks		Concordia at Fargo	Wayne at Sioux City			
SEPT. 17	N. W. Missouri at Bemidji	SDSC at Manhattan *	NDU at Grand Forks	NDS at Fargo	Montana State College at Grand Forks	Colorado State at Vermillion	Augustana at Fargo	Omaha Sept. 15 at Sioux City	Mankato State at Mankato	SDU at Vermillion	
SEPT. 24	Michigan Tech at Bemidji	Kansas at Manhattan	SDSC at Brookings *	SDU at Sioux Falls	Morningside at Sioux City	Augustana at Sioux Falls	ISTC at Cedar Falls	NDU at Sioux City	NDS at Cedar Falls	Colorado Western at Greeley	
OCT. 1	Winona State at Winona	Colorado at Boulder	Wichita at Bozeman	SDSC at Brookings *	SDU at Grand Forks	NDU at Grand Forks	Morningside at Fargo	NDS at Fargo	Drake at Cedar Falls	Adams State at Alamosa, Colorado	
OCT. 8	St. Cloud State at Bemidji	Nebraska at Lincoln	Cal. Poly. at San Luis Obispo	ISTC at Sioux Falls	SDSC at Brookings *	Morningside at Sioux City		SDU at Sioux City	Augustana at Sioux Falls	Pan Handle at Greeley	
OCT. 15	Mankato State at Mankato	Missouri at Manhattan	Idaho State at Bozeman	Lincoln U. at Sioux Falls	NDS at Grand Forks	SDSC at Vermillion *	NDU at Grand Forks	ISTC at Cedar Falls	Morningside at Cedar Falls	Colorado College at Colorado Springs	
OCT. 22	Moorhead State at Moorhead	Oklahoma at Norman	Arkansas State at Bozeman	Morningside at Sioux City	ISTC at Grand Forks	Washington (Mo.) at Vermillion	SDSC at Fargo *	Augustana at Sioux City	NDU at Grand Forks	Colorado Mines at Greeley	
OCT. 29		Minnesota at Minneapolis	NDS at Bozeman	NDU at Sioux Falls	Augustana at Sioux Falls	ISTC at Vermillion	Montana State at Bozeman	SDSC at Brookings *	SDU at Vermillion	N. M. Highlands at Las Vegas, N.M.	
NOV. 4	Superior State at Bemidji										
NOV. 5		Oklahoma State at Manhattan	Montana U. at Missoula			Idaho State at Pocatello	NDS at Vermillion	SDU at Vermillion	Macalester at St. Paul	SDSC at Cedar Falls *	Idaho State at Pocatello
NOV. 11											
NOV. 12		Iowa State at Manhattan					Mankato State at Fargo		Wheaton at Wheaton	SDSC at Greeley *	
NOV. 19		Arizona at Tucson	Fresno State at Fresno							Nevada at Greeley	
NOV. 24						Lamar Tech at Beaumont, Texas					

**SOUTH DAKOTA STATE COLLEGE
1960 PRESS RADIO, TV, GUIDE**

PREPARED BY THE STATE COLLEGE NEWS BUREAU

Don Scannell, director
Jerry Richardson, sports publicist
layout by John Allie
photos by Duane Quail and Doug Lyman
printing by the State College Printing Laboratory

GENERAL INFORMATION -----

LOCATION: Brookings, S. D.
(population 10,500), northeast
corner of the city

MAIL ADDRESS: College
Station, Brookings, S. D.

ENROLLMENT:
3,000 (approximate)

PRESIDENT:
Dr. H. M. Briggs

FOUNDED: September 24,
1884 (first classes held)

NICKNAME: Jackrabbits

COLORS: Yellow and Blue

STADIUM: State Field, ca-
pacity 10,500

CONFERENCE: North Cen-
tral Intercollegiate Athletic
Conference (Member since
founding of conference, 1921)

**CONFERENCE CHAM-
PIONSHIPS:**

Football: 1922, 1924, 1926,
1933, 1939, 1949, 1950, 1953,
1954, 1955, 1957

Basketball: 1929, 1940, 1947,
1956, 1957, 1959, 1960

Track: 1925, 1926, 1927, 1928,
1929, 1932, 1947, 1948, 1950,
1952, 1953, 1954, 1955, 1958,
1959, 1960

Baseball: 1959



STATE COLLEGE ATHLETIC STAFF

Director, Athletics and
Physical Education
Walter C. (Wally) Schwank
(Coe, 1934)

Head Football Coach and
Associate Director
Ralph A. Ginn (Tarkio, 1930)

Line Coach
Stanley Marshall (SDSC, 1950)

Backfield Coach
Ervin Huether (Yankton, 1943)

Freshman Coach
Warren Williamson (SDSC, 1951)

Assistant Freshman Coach
Howard Amen (SDSC, 1951)

Basketball Coach
James D. Iverson (Kansas State,
1952)

Track Coach
Glenn E. Robinson (Monmouth,
1932)

Wrestling Coach
Warren Williamson

Cross Country Coach
Glenn E. Robinson

Director of Graduate Program
Glenn E. Robinson

Baseball Coach
Erv Huether

Golf Coach
Jim Iverson

Tennis Coach
H. B. MacDougal (Miami, Ohio,
1927)

Trainer
Wayne Sinning (SDSC, 1953)

Ticket Manager
Harry Forsyth (SDSC, 1951)

Equipment Manager
John A. Johnson (SDSC, 1927)

Assistant Basketball Coach
Jim Marking (SDSC, 1950)

table of contents

General Information	inside front cover
Athletic Staff	1
Opponents' Schedules	back cover
1960 Schedule	2
1959 Results	2
Sketch of Wally Schwank	4
Sketch of Ralph Ginn	6
Football Coaching Staff	7
Roster	16
Player Sketches	8
Officials for 1960 Home Games	31
Record Against 1960 Opponents	14
State College Football Records	18
Record in NCC Football	20
Conference Records Held by SDSC	21
Record by Season	27
1959 Individual Statistics	22
1959 Team Statistics	23
Press and Radio Information	31
Ticket Information	inside back cover

1960 football schedule

SEPT. 10—**BEMIDJI STATE**—HOME (8:00)
SEPT. 17—**KANSAS STATE**—MANHATTAN, KANS. (1:30)
SEPT. 24—**MONTANA STATE**—HOME (8:00)
OCT. 1—**AUGUSTANA**—HOME (8:00)
OCT. 8—**NORTH DAKOTA U.**—HOME (HOBO DAY, 1:30)
OCT. 15—**SOUTH DAKOTA U.**—VERMILLION (1:30)
OCT. 22—**NORTH DAKOTA S.**—FARGO, N. D. (1:30)
OCT. 29—**MORNINGSIDE**—HOME (1:30)
NOV. 5—**IOWA TEACHERS**—CEDAR FALLS (1:30)
NOV. 12—**COLORADO STATE**—GREELEY, COLO. (1:30)

Season's Record W—2, L—7

Conference Record W—2; L—4

1959 record

SDSC		Opponent
0	MONTANA STATE	27
0	COLORADO STATE	22
12	KANSAS STATE	28
0	AUGUSTANA	13
6	NORTH DAKOTA U.	0
12	SOUTH DAKOTA U.	7
6	NORTH DAKOTA STATE	8
32	MORNINGSIDE	34
12	IOWA TEACHERS	14

forecast for '60

by JERRY RICHARDSON

After compiling their worst record in 15 years (2 wins, 7 losses) during the 1959 season, the Jackrabbits would like to feel they have no place to go in 1960 but up.

Fortunately, most indications are that their optimism is well founded. Three factors appear to indicate they have a reasonable chance to improve on last year's sixth place finish in the North Central Conference—(1) The 1959 season wasn't really as bad as it looked (three losses by a total of six points) (2) Graduation losses don't seem to have been critical, and (3) The squad has many of the characteristics Ralph Ginn likes to see in a team.

On the debit side is the continuing situation of balanced strength in the conference and a pair of rugged, early-season battles outside the conference in Montana State and the Kansas State Wildcats.

Not surprisingly, most of the problems for 1960 seem to center in the backfield. Senior quarterback Ray Gaul, who had begun to show promise just as the '59 season closed, will carry the brunt of the signal-calling chores. He expects to get help from a couple of eager sophomores but experience will be lacking all around.

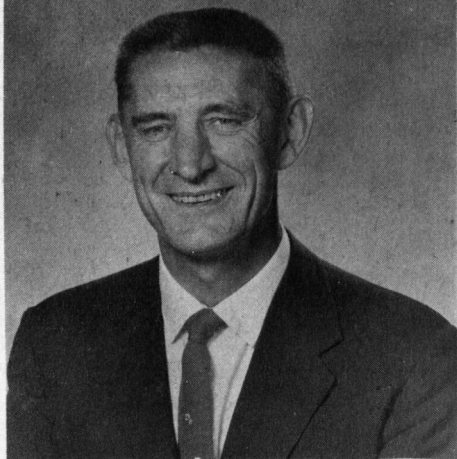
Youthful fullback Joe Thorne who led the Jackrabbit rushing game as a sophomore, should be improved with a year of

experience. As it was a year ago, however, his effectiveness will be determined greatly by the help he gets from the rest of the backfield.

Three potentially-good senior halfbacks, Jon Horning, Jerry Klocker, and Brent Wika, could spell the difference between success and failure in 1960. They'll also be pushed by some of the younger squad members, and could conceivably turn in the best performances of their careers.

Coach Mike Marshall's Jackrabbit line should be able to hold its own. Led by co-captain Lee Bondhus, a 6-1, 220-pound senior tackle, the Jackrabbit forward wall has a good assortment of size, speed and experience. Ends Dan Cunningham, a junior, and Roger Eischens, a sophomore, showed considerable promise in spring drills and will be counted upon to give a much needed assist to the Jackrabbit passing attack.

Obviously, the 1960 Jackrabbits will be a rebuilt squad, and at somewhat of a disadvantage against some of their more seasoned opponents. Whether or not their youthful eagerness and determination can sufficiently offset this shortcoming remains to be seen. Football fans, however, should be able to count on seeing a scrappier, more colorful Jackrabbit squad in 1960 than they have seen the past several seasons.



MEET WALLY SCHWANK

by DON SCANNELL

"State College has an outstanding staff and a fine program, and I'm proud to become a part of this team."

This comment was made by Walter C. "Wally" Schwank as he took over as Athletic Director and head of the Physical Education Department on Aug. 1. Schwank was named to succeed R. B. "Jack" Frost who moved to Springfield College in Massachusetts after directing the State College program since 1947.

"I'm particularly impressed by the way the college faculty, as well as stu-

dents and other supporters, looks up to the athletic staff members as good teachers and leaders, in addition to being good coaches," Wally remarked.

State College has an excellent reputation in both athletics and physical education, the new director continued, and our major task is to continue this program of excellence while striving for improvement.

Schwank, who has had a successful 26-year coaching career and holds a doctor's degree in physical education, emphasized that the athletic and physical education programs complement each other. He went on record as being strongly in favor of a balanced athletic program, such as State College has supported.

He stated, "I strongly believe that each sport complements every other sport in the building of a total athletic program."

The well-rounded athletic program gives more men the opportunity to secure the advantages of competing in intercollegiate athletics, he observed. It also helps the coaches we train have greater chance to obtain collegiate varsity experience.

With a coaching career studded with successful seasons and the longest football victory string in Iowa high school ranks, Wally can speak from experience on the values of winning teams.

"It's much easier to obtain good jobs for beginning coaches when their college has the reputation of winning athletics," he said.

The new athletic director also strongly approves of State College's policy of scheduling major opponents occasionally in all sports. Although this type of competition makes it more difficult to post remarkable won-lost records, it adds prestige to the college and its program and gives athletes greater incentive, he believes.

Although Dr. Schwank is the first to admit that he has much to learn about

the intricacies of State's athletic operation, he foresees three major projects which must be accomplished to keep the college at its present high levels in athletics and physical education.

He believes that a new stadium and a new fieldhouse are vitally needed to provide adequate facilities for both physical education and athletics. He would like to see the stadium completed as soon as possible and a new fieldhouse on the way to provide a swimming pool, dressing rooms, offices, an indoor track and other facilities.

To maintain the athletic program at its present high level, support from alumni and friends will continue to be needed. Wally foresees the Jackrabbit Club, recently organized, as helping to provide the support and increased financial resources which will be required.

The third area of attention is the physical education program for men and women. Wally said that the pattern of growth and development in physical education needs to be continued to maintain State's fine reputation in physical education circles.

Schwank, who will be out of active coaching for the first time in 26 years, was athletic director and head of the Physical Education Department for Men and Women at Coe College in Cedar

Rapids, Iowa, before accepting the State College post.

His Coe football teams compiled a 25-7 record in four years, won two conference championships and posted an unbeaten record in 1959. He also coached track at Coe.

From 1950 to 1956 he was freshman football coach and assistant professor of physical education at the State University of Iowa. He was a teacher, coach and athletic director in high schools in Sibley, Anamosa, Carroll, Iowa City and Davenport in Iowa over a 16-year period. His three Anamosa football teams and one at Davenport posted unbeaten records.

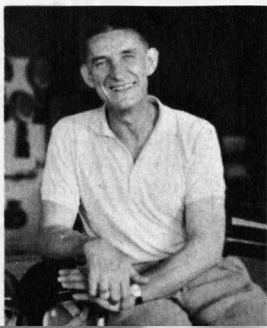
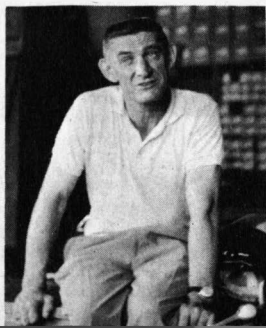
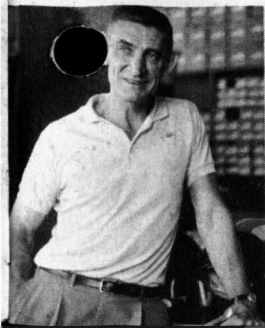
Schwank was graduated from Davenport High School in 1930, and in 1934 he was graduated cum laude from Coe, where he won the award for athletics and scholarship and was president of the senior men's honor society. He received a master's degree in 1945 and a doctor's degree in 1955, both from Iowa.

He has held offices on the state and district levels in physical education organizations and has been a delegate to national conferences.

In Cedar Rapids, Schwank has been a member of the school board and on the board of St. Paul's Methodist Church. He also belonged to Rotary, the YMCA and the Chamber of Commerce Speaker's Bureau.

THREE MAIN OBJECTIVES—

build the stadium . . . get a new field house . . . keep the program up to its present level





thirteen years of the Ralph Ginn 'touch'

For 13 years now, South Dakota State College football fans have been observing, without quite understanding, the development of the Ralph Ginn "touch."

The 53-year-old, whitehaired Jackrabbit coach has had an outstanding record during those years—70 victories, 45 defeats and six ties (50-20-6 in North Central Conference competition). Yet, the Ginn touch was most obscure during his most successful period at the State College helm, 1953-54-55.

Those were the years when fate sent him platoons of quick and hard-running backs and an apparently limitless supply of the heftiest linemen in the conference. Those were the years when the Jackrabbits dominated their competitive circle with ease, the years of Jerry Welch, Bob Betz, Bill McDonald, Nig Johnson, Dominic Klawitter, Stan Uhrir, Dick Steiner, Jack Nitz, and Hank Back-

lund. Those were the years, too, when conference opponents conceded before the season opened.

Ginn's magic was working in those years, too, but success was something fans attributed to a guy named "Jerry," or "Dominic," or "Bob." But the 100-words-a-month coach was even making that one shift that would his team invincible on the field. In 1955 he switched Dick Steiner, a senior who had played a year of mediocre fullback and one of competent guard, to quarterback. The heavy-legged Steiner became in short months the highly intelligent leader of another championship squad. Ginn shifted the fragile but talented Johnson to quarterback from half in 1956, and the Brookings boy supplied most of the excitement in a rare dismal season with his sensitive passing fingers.

But Ginn's masterpiece was the 1957 squad. Selected for the lower reaches of the second division, by everyone who cared to vote, the Rabbits combined healthy determination with astute football to take the championship. That club lacked speed and it lacked size, but it shone with the Ginn touch—the correct offense, proper use of manpower for the specific situation, varied and perceptive defensive play; briefly—intelligent and imaginative football.

That club of sophomores and juniors never performed again in a championship fashion, for it was overcome by confidence and its latent mediocrity. Yet,

VITAL STATISTICS ON COACH GINN—Grad. Tarkio, Mo., Coll. 1930; M.A., Missouri 1941; Record in 15 years of college coaching—W-76, L-54, T-7; Record at SDSC—W-70, L-45, T-6. Coached at Tarkio High School 10 years; Tarkio College two years; coach and dir. of army P.E. program at Wayne, Nebr., Teachers three years; Brookings high school three years; SDSC 13 years. His 1950 Jackrabbit team gave SDSC first undefeated season since 1926. Married, two children.

the coach's touch was clear, for the 1958 and 1959 squads won games they wanted badly enough.

The 1960 State club is not impressive in quickness nor in physique, but in its coach's analysis lies a warning for North Central coaches. Ginn purses his lips characteristically, hitches his pants and says, "I don't know . . . but give us a boy or two, coming through in a

position or two where we haven't got it right now, and maybe we'll be all right. Maybe 6 to 12 points more next season will make the difference."

The 1959 Jackrabbits lost three conference games in a row by a total of six points. Not many football experts would care to wager much wealth on the possibility that Ralph Ginn's touch won't give him that number of points at least.

coaching staff



ERVIN HUETHER, backfield coach

Chief scout in addition to coaching the backs, Erv is beginning his eleventh year at State and tenth as backfield coach. Also baseball coach at State, he coached at Bowdoin and Bates colleges in Maine and in the Navy. He received a bachelor's degree in 1943 from Yankton College and a master's from Minnesota in 1950.



STAN MARSHALL, line coach

Beginning his fourth year on the State College staff, Stan is in charge of lineman and defensive planning. He was on State grid teams from 1947 to 1949 and coached at Groton, Centerville, Hot Springs and Jamestown College before returning to State. His grid and track teams, compiled impressive records both years he was coach at Jamestown. Graduated with high honor in 1950, he earned a master's degree at Iowa in 1953.



WARREN WILLIAMSON, line coach

Guidling freshman gridders in their transition from prep to college ball is his responsibility. Warren is in his fifth year on the staff and also coaches wrestling. He earned a bachelor's degree in 1951 and a master's in 1954, both from State College. His scoring feats are still in the State College and conference record books and he still claims a share of the Jacks' total offense mark. He coached at Clear Lake and Winner.



HOWARD AMEN, assistant freshman coach

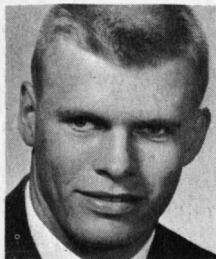
He takes time off from teaching mathematics at State College to work with the freshman linemen. An all-conference center on the undefeated 1950 Jackrabbit team, Howard served as coach, math teacher and principal at Lennox before returning to State.



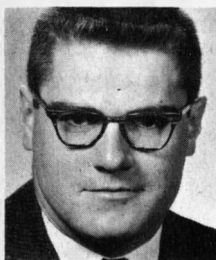
WAYNE SINNING, trainer

Formerly coach at Lennox, Wayne is beginning his fourth year as State's trainer. He earned a bachelor's degree in 1953 and a master's in 1956, both at State College and is currently working toward the doctorate at Oregon.

jackrabbit sketches

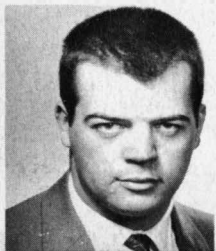


ANDERSON

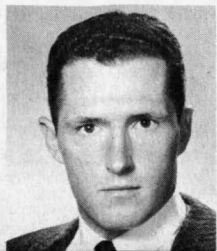


BONDHUS

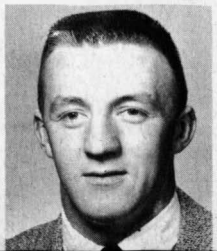
COTTINGHAM



CUNNINGHAM



DEVANEY



EISCH



Daryl Anderson—from Stanton, Iowa, transferred to State College last fall from the University of Nebraska. A high scoring back in high school, "Andy" is capable of playing at any position in the secondary. A sure tackler; lack of speed in his greatest liability. Fine squad man; 5-8 and 170 pounds. An engineering student.

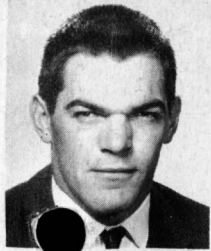
Lee Bondhus—was a regular in 1959. Big (6-2, 220) and quick, could be a standout this fall. A senior mathematics-physical education major from Storden, Minn. Co-captain Lee is expected to supply solid leadership up front. He is married. A two-time award winner.

Bob Cottingham—played prep football for Coach Joe Quintal at Mitchell. Bob has good speed, a fast charge and can play guard or tackle. Needs to develop consistency to move up. He is a junior in agriculture. Stands 5-11 and weighs 210 pounds. Married.

Dan Cunningham—has fine potential and started to show it in spring drills; stands 6 feet and weighs 190 pounds. Dan is from Pipestone, Minn., where he played high school football for Coach Earl Teas. Married, he is a junior economics major. Has earned one letter.

James DeVaney—a three-sport athlete at Dell Rapids high school for Coach Virg Sandvig. Standing 6-2 at 195 pounds, Jim is a hard man to bring down. He will add power to the halfback position. Jim is a junior civil engineer.

Roger Eischen—a speedy sophomore end; he stands six feet tall and weighs 190 pounds. A top receiver, Ike has all the necessary attributes to be great. Hails from Canby, Minn., played high school football there for Coach Norm Overland. A good student in physical education and mathematics.



FAWCETT



FERGUSON



FRANK



FRICK

Rod Fawcett—a fast rugged guard prospect from Miller where he played for Coach Bob Schroeder. Rod stands 5-11 and weighs 190 pounds. He is a junior in wildlife conservation. On the brink of success.

Jim Ferguson—weighs 210 pounds and stands 6-1. He can play any place in the line; will probably be used as a tackle this fall. Jim was a standout high school athlete at West Concord, Minn. A sophomore psychology major.

Ron Frank—at 6-6 and 235 pounds, big Ron has the equipment to develop into a really fine lineman. Played in every game last fall and lettered. He hails from Milan, Minn., where he was an all-around athlete for Coach Maynard Penning. A junior in agriculture.

Cy Frick—followed grandfather and father to South Dakota State College to study Pharmacy. Has the size (6-3, 190) and hustle to become a good center, should see a lot of action this fall. A junior; he played for Coach Bill Schode at Sequim, Wash.

Dick Gaughran—from Austin, Minn., a 6-1, 190-pound guard, played high school football for Coach Hass. Dick has good speed and hustle and seems set for a fine season. A junior history major; lettered in 1959. Married.

Ray Gaul—elected co-captain by his teammates, is tough defensive man and a fine all-around performer at quarterback. Ray is a good leader and strategist on the field. He played for Coach Ray Roth at Hawarden, Iowa, high school. 5-11 and 180, he is a senior in physical education.

Les Hansen—is quick and agile for his size (6-4 and 195 pounds) and has everything required to become a fine college end. He played for Coach Les Lyon at Tyler, Minn. high school. A physical education major.

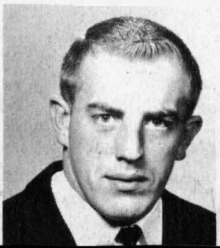
Bob Harris—is small (5-8, 160 pounds) as college guards go but he makes up for it with good football sense and a lot of fire. Bob played his high school ball at Canton for Coach Burdell Coplan. A civil engineer at the sophomore level.

GAUGHAN

GAUL

HANSEN

HARRIS





HORNING



JACKSON



JOHNSON



KLOCKER

Jon Horning—halfback from Watertown, played prep ball at St. Thomas Academy, St. Paul, Minn. Jon is an elusive runner, hits hard on defense and is especially strong on pass defense. He has earned two major awards in both football and baseball and is a senior in physical education.

Larry Jackson—6 ft. 170-pound sophomore halfback from Beresford. Passed frosh football, looked good in spring drill until slowed by an ankle injury. Engineering student. High school coach, Rog Price.

Bill Johnson—hails from Chicago, Ill., where he played for Coach Bill Hyland at Austin high school. Bill is a sound football player; stands 5-10 and weighs 170 pounds. A sophomore in engineering.

Jerry Klocker—an outstanding athlete in all sports at Hoven under the tutelage of Coach Ray Novak. Two year letterman in baseball and lettered last year in football. Jerry has great speed and the ability to go all the way. He is a senior in economics—stands 5-11 and weighs 180 pounds.

Casper Klucas—played high school ball at Watertown under Coach John DeWitt. Will give added speed to the halfback position. Casper is a junior engineering student, stands 5-10 and weighs 180 pounds.

Dennis King—5-11, 170-pound sophomore halfback from Canton, good speed, break away type runner. Ankle injury in spring drills slowed his development. Has good potential. Physical education major, high school Coach Burdell Coplan.

Jim Kornmann—played outstanding football at Lead high school for Coach Wendell Handley. A married Navy veteran, Jim lettered at guard last fall and should be ready for heavier duty this season. Pesky injuries slowed his progress in 1958-59. He stands 5-10 and weighs 190 pounds—a senior in physical education.

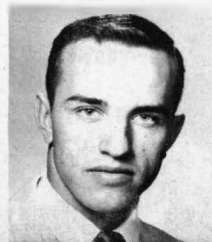
Dean Koster—5-10, 175-pound quarterback from Lake Benton, Minnesota. Regular frosh quarterback past fall. Good passer, strong runner, has looked exceptionally good on defense, will be battling for the number one spot. Major physical education.

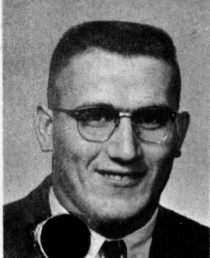
KLUCAS

KING

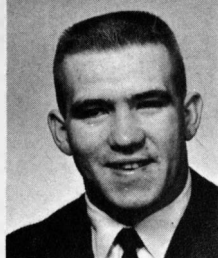
KORNMAN

KOSTER

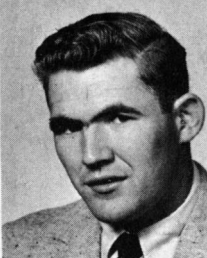




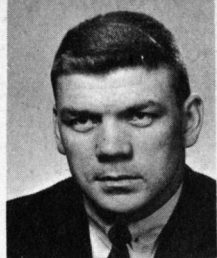
KURTENBACH



LOGAN



MADDEN



MEEK

Frank Kurtenbach—has strength, size (6-2, 220), and two years of experience at tackle. Should complete his Jackrabbit career with a fine season. He played his high school football for Coach Floyd Mitchell at Parkston. Frank is an outstanding heavyweight on Coach Warren Williamson's mat squad. A physical education major. senior, two letters.

Marlin Logan—is a fine sophomore guard prospect from Yankton where he played for Coach Don Allen. An aggressive leader, especially effective defensively. Marlin stands 5-10 and weighs 190 pounds. He is studying electrical engineering.

John Madden—returns from an International Farm Youth Exchange assignment in Italy to bolster the guard situation. John is strong, eager, and quick. May be a standout. Hails from Herried where he played his high school football under Coach "Blackie" Englehardt. John is a husky 5-10 and 210 pounds.

Don Manning—(not pictured) back in school after a tour of duty in the service. Don stands 5-11 and weighs 195 and will add both speed and power to the halfback position. He is a senior physical education student.

John Meek—played prep ball for Coach Bob Schroeder at Miller. Fine ball handler and passer at the quarterback position. "Johnny" is a senior economics major. Stand 5-10 and weighs 175 pounds.

Gene Metzger—from Rock Rapids, Iowa where he played for Coach Carl Zehnder. At 6-1 and 210 pounds, he has the size to play at several line posts. Will probably be used as an end. Tough and alert; lack of speed is his greatest shortcoming. A junior in agriculture.

Dennis Moller—5-9, 170-pound quarterback from Sioux Falls, played both halfback and quarterback on last years undefeated frosh team. Has shown a lot of poise and has good leadership ability. Good tackler on defense. Majoring in pharmacy, high school coach, Grant Heckinlively.

Ben Motis—on the threshold of success as a college footballer. He should break through and become a fine center this fall. With good size (6-0, and 195 pounds), Ben is a senior economics major. A varsity wrestler. His home is Greenwood, Minn., where he played high school football for Coach Howard Kortmeyer. Has earned one varsity award.

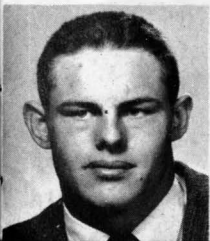
Bob Naatjes—played high school football at Lennox for Coach Mel Logterman, came on rapidly in spring practice and should see a lot of duty at an end post this fall. Excellent ability at rushing the passer, good speed and size (6-2, 185). He is a junior honor student in mathematics.

METZGER

MOLLER

MOTIS

NAATJES

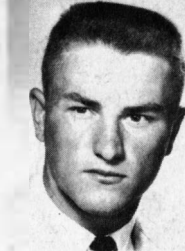




NELSON



PFINGSTEN



PLINSKE



SOUKUP

Mike Nelson—carries 6-2 and 190 pounds with good speed. His running, blocking and tackling ability makes him well equipped for the full-back position. Played high school ball at Slayton, Minn. for Coach Lyle Hanks. Mike is a junior in industrial arts education.

Norm Pfingsten—6-2, 210-pound tackle from Worthington, Minn. Milt Osterberg coached him in high school. Norm has the potential to become a fine college lineman; missed most of last season with a broken foot bone. A junior in physical education.

Mike Plinske—played outstanding high school ball at Canby, Minn., for Coach Norm Overland. Mike is a hard runner and a tough competitor at halfback. He stands 5-9 and weighs 170. Is a junior physical education major.

Jim Redman—(not pictured) a Flandreau high school athlete under Coach Clyde Cotton, transferred to State College last fall and is eligible for his first season as a Jackrabbit. Jim is a good hitter; a general registration student. 5-11, 185 pounds.

Leo Soukup—6-1 180-pound center from Wagner; steady, tough, a good worker. His high school coach was Dick Fuller. A junior in civil engineering.

John Sterner—played high school football at Boys Town for Coach "Skip" Palrang. A fiery competitor, John has good speed and stunts well defensively. Stands 5-8 and weighs 175 pounds. A junior from Sioux Falls majoring in physical education. A standout Jackrabbit wrestler.

Mike Sterner—like brother John he played his high school football for Coach "Skip" Palrang at Boys Town. Had a good spring practice, could be a starter. A tough and eager 190-pound guard; stands 5-10. Fine varsity wrestler. From Sioux Falls, Mike is majoring in physical education.

John Stone—5-11, 195 sophomore from Hendricks, Minnesota, missed entire frosh season with a broken wrist. Looked very good in spring drills. Strong, bullish runner with ability to cut in open field, solid on defense. Majoring in agriculture. Coach Eddie Bye.

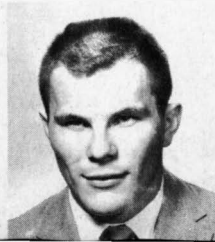
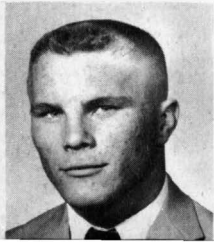
Joe Thorne—played high school football at Beresford for Coach Roger Price. A reckless type fullback who does everything well. He is tough on defense and can punch the opponents' line full of holes with his hard running. Was regular fullback last year as a sophomore. He is an engineering student. Stands 6-1 and weighs 195 pounds.

J. STERNER

M. STERNER

STONE

THORNE





WEGNER



WICKS



WIKA



WOLFF

Larry Wegner—played his prep football at Groton for Coach Bill Robinson. Larry is big enough (6-3, 208) to become a fine lineman with experience. Made steady improvement during the freshman season and spring practice. A sophomore in general registration.

Jerry Wicks—5-10, 185 sophomore fullback or guard, very strong, likes contact, has shown well on defense. High school coach Buddy Elkins, major, agriculture.

Brent Wika—two year letterman at halfback and a fine baseball pitcher. A 5-11, 185-pound senior Brent is majoring in physical education. He has good speed, is an excellent pass receiver and a fine pass defense man. Brent played his high school football at Clark for Coach Buddy Elkins.

John Wolff—a senior from Eureka, played high school football for Coach Louis Papendick. A fine receiver, John has begun to pick up the necessary defensive know how to move up. Should have a good season. A senior economics major.

Returning Lettermen:

(Including number of awards)—21

- John Meek, QB, (2)
- Ray Gaul, QB, (co-capt.)
- Mike Nelson, C
- Jim DeVaney, HB
- Brent Wika, HB (2)
- Pat Kern, FB
- * Joe Thorne, FB
- Ben Motis, C-G
- John Frick, C
- John Sterner, G
- Dick Gaughran, G

- Mike Sterner, T
- Jim Kornmann, G
- * Frank Kurtenbach, T (2)
- * Leland Bondhus, T (2)
- (co-capt.)
- LeRoy Bergan, T
- * Dan Cunningham, E
- * Jerry Klocker, HB
- Jon Horning, HB
- John Wolff, E
- Ron Frank, T
- * Starter last year

Lettermen Lost:

- (include number of awards)—(12)
- Dave Acheson, FB (3)
 - Kermit DeBoom, C (2)
 - Ken Hanify, E (3)
 - Ken Holm, G (3)
 - Jake Krull, E (3)
 - Richard Knudsen, E (2)
 - Clarence Naatjes, T (1)
 - Al Pool, G (2)
 - Howard Rice, HB (3)
 - Jim Vacura, QB-HB (3)
 - Dennis Wolfe, HB (2)
 - Judd Cooney, E-HB (2)

record against 1960 opponents

BEMIDJI STATE

	SDS	BS
1945	0	6
1951	48	0
	48	6
W—1; L—1		

KANSAS STATE

	SDS	KS
1959	12	28
	12	28
W—0; L—1		

MONTANA STATE

	SDS	MS
1956	14	33
1957	6	13
1958	6	23
1959	0	27
	26	96
W—0; L—4		

AUGUSTANA

	SDS	AUG.
1931	49	0
1946	26	6
1947	33	12
1948	20	6
1949	28	0
1950	20	12
1951	58	7
1952	47	6
1953	55	0
1954	68	0
1955	28	0
1956	20	21
1957	16	0
1958	20	6
1959	0	13
	488	89
W—13; L—2		

NORTH DAKOTA U.

	SDS	NDU
1906	5	4
1907	6	24
1914	14	3
1915	0	0
1916	14	7
1917	13	6
1919	9	7
1920	3	6
1921	27	14
1922	6	16
1923	6	12
1924	7	6
1926	6	0
1928	0	6
1929	6	7
1930	0	21
1931	6	34
1932	0	13
1933	18	2
1934	0	6
1935	6	6
1936	6	33
1938	0	37
1939	14	13
1940	0	6
1941	15	33
1942	8	19
1948	6	31
1949	0	19
1950	21	21
1951	21	12
1952	60	6
1953	13	13
1954	34	20
1955	14	6
1956	14	13
1957	53	21
1958	12	30
1959	6	0
	449	533
W—17; L—18; T—4		

SOUTH DAKOTA U.

	SDS	SDU
1889	6	6
1900	0	17
1901	0	22
1902	0	10
1904	6	6
1905	0	17
1906	0	22
1910	0	33
1911	6	15
1912	7	73
1914	0	12
1915	0	7
1919	13	6
1920	3	7
1921	9	0
1922	7	7
1923	7	0
1924	10	3
1925	7	0
1926	0	0
1927	12	16
1928	13	0
1929	6	0
1930	13	6
1931	0	10
1932	0	0
1933	14	0
1934	19	0
1935	2	7
1936	0	6
1937	2	12
1938	0	7
1939	7	21
1940	0	26
1941	0	40
1942	0	7
1946	20	0
1947	7	26
1948	0	33
1949	27	25
1950	54	28
1951	6	26

1952	21	21
1953	25	0
1954	20	19
1955	27	7
1956	14	19
1957	21	13
1958	7	28
1959	12	7
	430	679

W-18; L-27; T-6

1953	32	14
1954	50	13
1955	33	7
1956	9	26
1957	32	14
1958	20	33
1959	6	8
	714	453

W-28; L-14

IOWA TEACHERS

	SDS	ISTC
1935	13	22
1936	13	0
1937	0	33
1940	2	12
1941	0	21
1942	0	38
1945	7	58
1946	6	6
1948	7	33
1949	14	13
1950	34	13
1951	48	6
1952	34	47
1953	52	19
1954	41	20
1955	34	21
1956	31	27
1957	23	20
1958	13	8
1959	12	14
	384	421

W-10; L-9; T-1

NORTH DAKOTA STATE

	SDS	NDS
1903	0	85
1908	11	5
1909	5	11
1910	6	3
1911	14	3
1913	7	6
1915	21	0
1917	21	14
1919	0	0
1920	27	7
1921	54	0
1922	13	0
1923	13	14
1924	14	0
1925	3	3
1926	21	0
1927	34	0
1928	27	6
1929	0	0
1930	0	24
1931	7	0
1932	6	12
1933	13	7
1934	38	0
1935	6	7
1936	0	7
1937	13	6
1938	6	13
1939	6	0
1940	7	0
1941	0	25
1942	14	0
1946	0	6
1947	7	0
1948	7	6
1949	33	13
1950	60	0
1951	7	7
1952	14	48

MORNINGSIDE

	SDS	Morn.
1922	48	0
1923	24	26
1924	34	0
1926	21	6
1927	44	7
1928	13	7
1929	38	0
1930	0	13
1931	20	0
1932	26	6
1933	21	6
1934	7	13
1935	12	6
1936	0	13
1937	0	7
1938	14	13
1939	34	13
1940	6	6
1941	3	0
1942	3	0
1946	0	0
1947	13	0
1948	13	18
1949	27	20
1950	31	7
1951	28	26
1952	39	25
1953	31	29
1954	34	39
1955	21	21
1956	28	13
1957	7	7
1958	26	6
1959	12	7
	423	651

W-18; L-26; T-6

COLORADO STATE

	SDS	CS
1948	27	2
1949	40	13
1959	0	22
	67	37

W-2; L-1

