

1970

## Feeding Stalls for Brood Sows

George W. Libal  
*South Dakota State University*

Richard C. Wahlstrom

J. W. McCarty

Follow this and additional works at: [http://openprairie.sdstate.edu/sd\\_swine\\_1970](http://openprairie.sdstate.edu/sd_swine_1970)

 Part of the [Animal Sciences Commons](#)

---

### Recommended Citation

Libal, George W.; Wahlstrom, Richard C.; and McCarty, J. W., "Feeding Stalls for Brood Sows" (1970). *South Dakota Swine Field Day Proceedings and Research Reports, 1970*. Paper 11.  
[http://openprairie.sdstate.edu/sd\\_swine\\_1970/11](http://openprairie.sdstate.edu/sd_swine_1970/11)

This Report is brought to you for free and open access by the Animal Science Reports at Open PRAIRIE: Open Public Research Access Institutional Repository and Information Exchange. It has been accepted for inclusion in South Dakota Swine Field Day Proceedings and Research Reports, 1970 by an authorized administrator of Open PRAIRIE: Open Public Research Access Institutional Repository and Information Exchange. For more information, please contact [michael.biondo@sdstate.edu](mailto:michael.biondo@sdstate.edu).

Feeding Stalls for Brood Sows

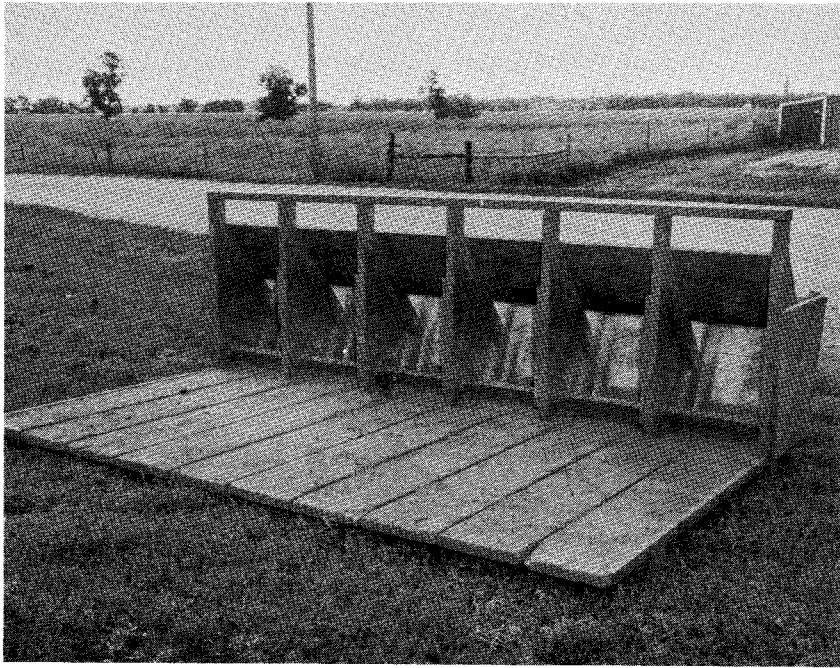
George W. Libal, Richard C. Wahlstrom and J. W. McCarty

How to assure that each sow gets her fair share of feed and how to control the "boss" sows are management problems facing the producer who is limit feeding groups of sows in order to get maximum litter size and minimum gestation feed costs. Feeding stalls have proven very effective in achieving both of these objectives. There are several types of commercial stalls on the market as well as several good designs for homemade feeding stalls. The type used at South Dakota State University has drawn considerable interest by producers and many have asked for material lists and costs. These stalls are probably no better than many others but have been effective in minimizing limit feeding problems.

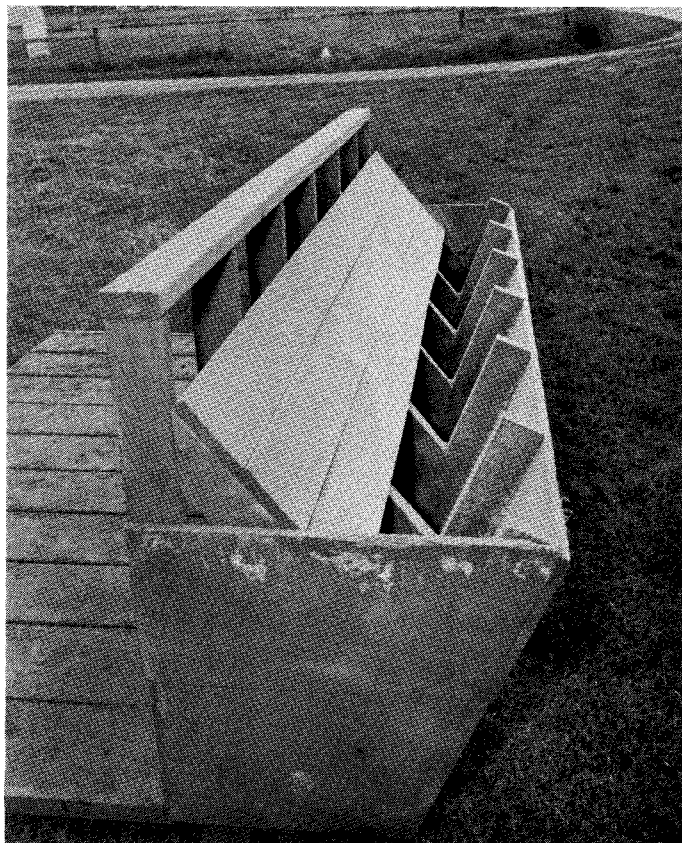
Pictures A and B show two views of this feeding stall. A variation which gives further control of feeding is this basic stall with platform dividers shown in picture C. Materials for the basic stall A and B are listed below. Lumber costs change with location and availability so they have not been included.

Materials for Feeding Stall A and B

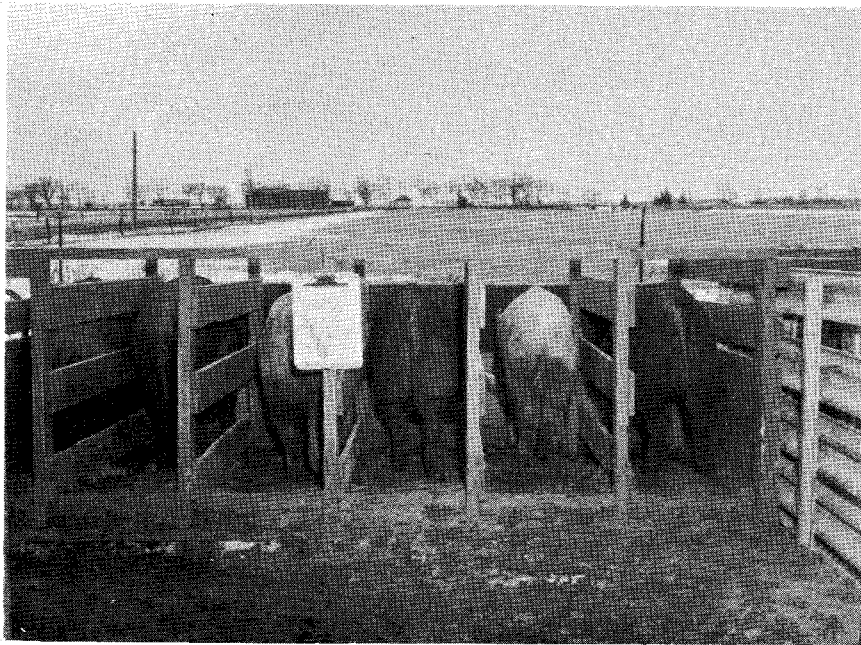
Quantity	Length	Type
5	12'	2" x 12"
2	12'	4" x 4"
1	10'	2" x 6"
3	10'	1" x 6"
5	10'	1" x 12"
1	10'	2" x 4"
2	12'	2" x 4"
2	16'	2" x 4"
plus		
1	10'	1" x 1" angle iron
2	5'	1" x 1" angle iron



Picture A



Picture B



Picture C