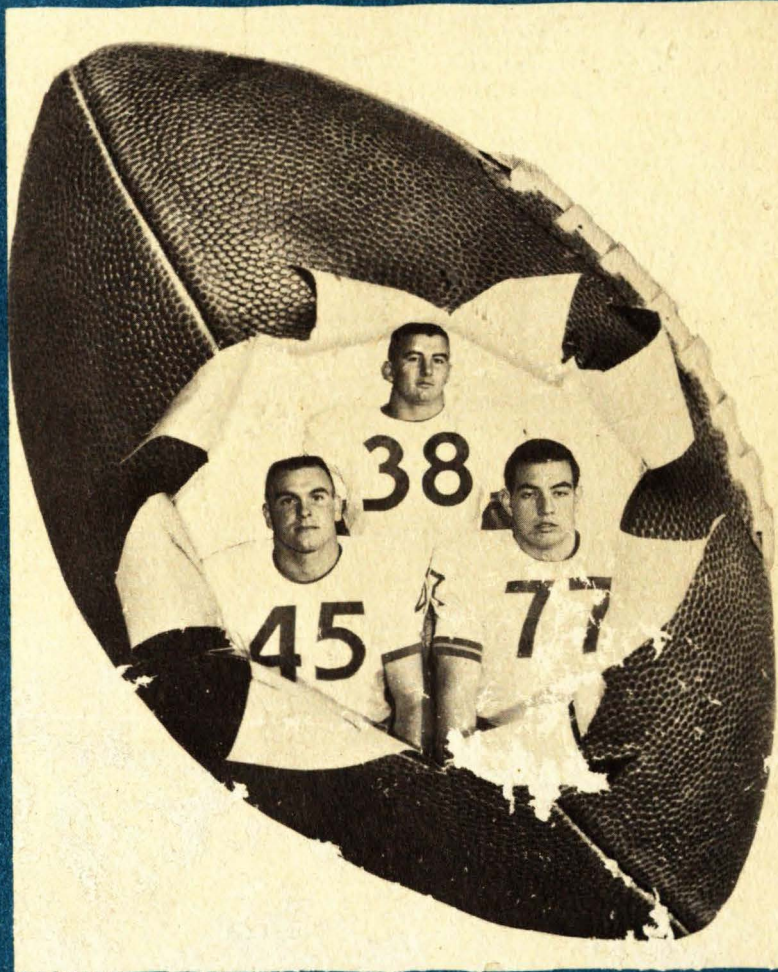


FOOTBALL

O
R
E
C
A
S
T



1964 SDSU

TO PRESS, RADIO AND TV REPRESENTATIVES

It is our sincere hope that this book will be helpful to you as you write and talk about the 1964 Jackrabbit football team. Contents of this book will be supplemented by releases and pictures throughout the season by the Sports Information Office. Please direct all requests to this office.

In planning your coverage of South Dakota State games, kindly take a moment to review the following items:

PRESS BOX TICKETS: These are required for everyone seeking admission—newsmen, cameramen and scouts. Requests for press credentials should be made well enough in advance to allow time for handling and mailing. When possible, late requests will be filled with passes left at the ticket window at the northwest corner of the stadium.

RADIO: After a confirmation of booth assignment from the Sports Information Office, stations should order own loops from the Brookings Telephone Co.

While our press box facilities generally are quite adequate, please help us serve you best by advising us well in advance of the games you plan to attend.

WOMEN AND CHILDREN ARE NOT PERMITTED IN THE PRESS BOX.

PHONES

Information Offices — 692-6111, Ext. 364, 365 or 366

Wayne Shaw, Sports Information Director; Home—692-6505

Don Scannell, News Bureau Director; Home—692-5093

Dan Johnson, News Bureau; Home—692-5461

Athletic Department—692-6111, Ext. 474 or 475

Press Box—692-6111, Ext. 201

South Dakota State University 1964 Football Brochure

SDSU football brochures are printed annually by the State University Printing Laboratory. This issue compiled and edited by Wayne Shaw, sports information director, with photos by Abbey Studio and SDSU Photo Laboratory, layout and art by Terry Khalili.

About The Cover

Featured on the cover are South Dakota State's 1964 tri-captains—(45) fullback Gale Douglas of Reedsburg, Wis.; (38) halfback Daryl Martin of Wagner, S. D.; and (77) tackle Dennis Dee of Homewood, Ill.

GENERAL INFORMATION

School—South Dakota State University

Founded—1884

Location—Brookings, South Dakota (pop. 11,400)

Enrollment—4,000 (est.)

President—Dr. H. M. Briggs

Nickname—Jackrabbits

Colors—Yellow and Blue

Conference—North Central Intercollegiate Athletic Conference
(charter member joining in 1921)

Stadium—Coughlin-Alumni (cap. 10,500)

table of contents

1964 Schedule, 1963 Record	2	South Dakota State University	30
SDSU Officials	3	Players' Nicknames, Birthdays	30, 37
Forecast for '64	4	NCC Football Records	31
Review of 1963	5-7	Freshman Schedule, '63 Results ..	31
Jackrabbits, Foes Fared in '63 ..	7	SDSU Football Records	32-33
Band Feature	8-9	Football Record by Season	34-35
Sketch on Ralph Ginn	10	Coaches' Cumulative Records	35
Staff Sketches	11-12	All-Time Record with Opponents	36
Jackrabbit Road Itinerary	12	Hobo Day Results	37
Player Sketches	13-19	Top Ten SDSU, Opponents' Scores	38
Athletic Staff Directory	19	Data on NCC Members	38
Roster, Pronunciation Guide	20-21	Press, Radio, TV Outlets	39
SDSU Record Against '64 Foes ..	22-23	New Dressing Room Facility	39
Cumulative 1963 Statistics	24-25	Scores SDSU Games Last Decade	40
NCC Football Champions	26	Ticket Information ... Inside Back Cover	
All-Conference Team, 1963	26	1964 Cross	
SDSU Record in NCC Football	27	Country Schedule .. Inside Back Cover	
NCC Statistics for 1963	28-29	Opponents' Schedules	Back Cover
Final 1963 NCC Standings	29		

1964 football schedule

Sept. 12—Montana State at Brookings	2:00 C.S.T.
Sept. 19—Fresno State at Fresno, Calif.	8:00 P.D.T.
Sept. 26—Augustana at Brookings	2:00 C.S.T.
Oct. 3—North Dakota State at Fargo, N. D.	7:30 C.S.T.
Oct. 10—North Dakota at Brookings (Hobo Day)	2:00 C.S.T.
Oct. 17—South Dakota at Vermillion, S. D.	2:00 C.S.T.
Oct. 24—Morningside at Brookings (Parents Day)	2:00 C.S.T.
Oct. 31—State College of Iowa at Cedar Falls, Iowa	1:30 C.S.T.
Nov. 7—Drake at Des Moines, Iowa	1:30 C.S.T.
Nov. 14—Mankato State at Brookings	1:30 C.S.T.

1963 record

	Opponent		Place
SDS	9 Montana State	6	Great Falls
SDS	7 Nebraska	58	Lincoln
SDS	54 Colorado State	14	Brookings
SDS	28 Augustana	8	Sioux Falls
SDS	7 North Dakota	6	Grand Forks
SDS	61 South Dakota	0	Brookings
SDS	40 North Dakota State	25	Brookings
SDS	27 State College of Iowa	13	Brookings
SDS	28 Morningside	22	Sioux City
SDS	17 Arkansas State	14	Jonesboro
Overall: W—9; L—1 NCC: W—6; L—0 — Champion			

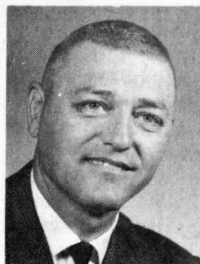
SDSU officials



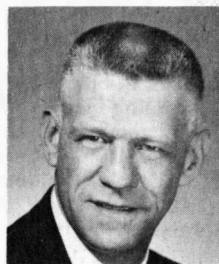
BRIGGS



MACDOUGAL



FORSYTH



BUNDGAARD

DR. H. M. BRIGGS, president

Dr. H. M. Briggs, a native Iowan, is serving his sixth year as president. Recipient of the first national scholarship given by packing magnate Thomas E. Wilson, he received his B.S. degree from Iowa State in 1933. He earned his M.S. from North Dakota Agricultural College in 1935 and his Ph.D. from Cornell University in 1938. The university's goal, as he states it, is "to strive for a better future through teaching, research and service." He is cognizant of the important role intercollegiate athletics plays in the life of an institution. Not just a frequent spectator at SDSU athletic events, he's an ardent fan, too. Dr. Briggs and his wife, Lillian, are parents of a son, Dinus, 24, and daughter, Janice, 13.

H. B. MACDOUGAL, faculty representative

Herbert B. MacDougal, head of the mathematics department, has been faculty representative to the North Central Conference for past 10 years. A 1927 graduate of Miami, Ohio, he earned his M.S. from the State University of Iowa in 1929. He has been an SDSU faculty member ever since. "Mac" served as tennis coach for over 25 years. He and his wife, Eloise, are parents of three children, Mrs. Mary Mott, and twins Harold and Herbert.

HARRY FORSYTH, athletic ticket manager

Former State baseball and basketball letterman Harry Forsyth has served as athletic ticket manager since 1960. On the staff since 1956, he also is assistant varsity and freshman baseball coach and teaches P.E. classes and aviation education. He earned B.S. in 1951 and M.S. in 1956, both from State. He and wife, Charleen, have a daughter, Susan, 12, and son, Maurice, 8.

DR. AXEL C. (AX) BUNDGAARD, director of athletics

In his fourth year as athletic director and head of the department of physical education is Dr. Axel C. Bundgaard. His goal is to direct a well-balanced and expanded program where possible. A 1939 graduate of Midland College, Fremont, Neb., he earned his master's from Michigan in 1947 and Ph.D. from Iowa in 1958. Prior to coming to SDSU in summer of 1961 he coached in several Nebraska high schools and at Wartburg College. He and his wife, Margaret, have four children, Elizabeth, 18, Eric, 15, Chris, 12, and Mark, 6.

forecast for '64

South Dakota State, which has ridden tall in the football saddle recently, may loom as a juicy trophy for some 1964 foes. But there are indications Jackrabbit hunting may not be as satisfying to enemy nimrods as the departure of 13 of last fall's talented crew indicates.

Four of the departed were first-team, all-league stock. The 24-5-1 record logged by the '63 seniors is one of the most glistening pieces in SDSU grid history.

Despite these debits the '64 outlook is brightened by the return of quarterback Ron Meyer and end Ed Maras, all-North Central Conference picks as sophs.

Halfback Wayne Rasmussen, center Jerry Ochs, tackle Dave Westbrook and end Darrel Tramp, each a '63 all-NCC pick, helped land one outright title and two co-championships. Their 16-1-1 3-year loop mark was the best ever. Not even the powerful 1949, '50 and '51 units (14-2-2), who own the best composite record—24-4-2, .833—had a better NCC report card. Those teams won one title, shared one and placed second.

Meyer, a deadly passer, finished 37th nationally in the college division with 1,091 air yards. He's primed for another brilliant campaign. His record of pitching at least one TD pass in each collegiate appearance is fantastic. He has a 9-game streak going as he did not face Montana State in '63 opener.

His 19 TD pegs tied him for second in the nation. However, one of State's greatest needs is to find receivers to fill voids left by Rasmussen and Tramp. Maras, who can catch in a crowd, junior John Riedy, transfer Jim Kominek plus soph Mike Buss are the leading flank candidates. Terry Gukeisen, Reed Sanderson and Dave Glasrud, all veterans, head the split back roster.

"Our fullbacking looks to be stronger and should give us a more formidable ground attack in '64," asserts Coach Ralph Ginn. He hints that tri-captain

Gale Douglas and Jim Nesvold will give fans the kind of fullbacking they've grown accustomed to—rugged, line-busting with a halfback's flare.

Soph Gary Hyde shows promise as a halfback threat but must beat out gritty Butch Benson and tri-captain Daryl Martin.

It all adds up to an offense that should score pretty well with Meyer's arm the drive shaft of the attack.

Up front, SDSU will be strong physically and have adequate size. Whether the '63 quickness can be matched is in question. Trimmer Don Brown plus Mick Hurlburt and promising sophs Bob Nelson and Rick Holm point to tackle depth behind tri-captain Dennis Dee, 228, and Fred Holloway, 220.

Strong man newcomer Bill Cole plus Bob Williams and Vic Pepka, all over 220, and Gary Neuharth, 193, could form Grade A guard corps.

Maras, Dee, Meyer and Douglas are returning regulars while Benson and Williams were occasional starters.

Letterman Tom Loquai, shifted from guard, and Lyle Farrand are the top center prospects.

Soph defensive ace Pat Durkin and Bob Webbenhurst will be reserve T-pilots.

Duplicating or improving on the 9-1 mark of '63 will be difficult as the slate is tough though no Nebraska is on the menu. Both Montana State and Fresno State will be strong and should help ready SDSU for loop play as the Husker game did in '63.

State College of Iowa and the North Dakota schools loom as potent pretenders to the Jacks' NCC crown. Drake and Mankato State toughen the non-loop agenda.

"We have a strong, interesting schedule," said Ginn, who calls college division football "America's most exciting football."

1963---a season to remember

SOUTH DAKOTA STATE 9, MONTANA STATE 6

Great Falls, Mont., Sept. 14—Doug Peterson's 45-yard payoff pass to Darrel Tramp with 8:42 left brought South Dakota State from behind to beat Montana State, 9-6. It took a fumble recovery on the SDS 4 by Terry Gukeisen, however, to blunt a late 68-yard Bobcat drive.

South Dakota State	3	0	0	6	— 9
Montana State	0	6	0	0	— 6

Scoring: SDS—Douglas 21 field goal; MS—Mero 30 pass from Christison (pass failed); SDS—Tramp 45 pass from Peterson (kick failed).

NEBRASKA 58, SOUTH DAKOTA STATE 7

Lincoln, Neb., Sept. 21—Nationally ranked Nebraska, which was to go on to the Big Eight title and an Orange Bowl victory, opened its season by thrashing South Dakota State, 58-7. The Jacks finished with minus 17 yards rushing but soph Ron Meyer launched a spectacular year by throwing the first of 19 TD passes.

South Dakota State	0	0	0	7	— 7
Nebraska	14	23	21	0	—58

Scoring: Neb.—Johnson 36 run (Johnson kick); Johnson 14 run (Johnson kick); McCloughan 4 run (Johnson kick); McCloughan 2 run (Theisen kick); Safety (Meyer tackled in end zone); B. Smith 1 run (Theisen kick); Claridge 1 run (Johnson kick); Hohn 51 run (Theisen kick); Duda 2 run (Theisen kick); SDS—Maras 23 pass from Meyer (Douglas kick).

SOUTH DAKOTA STATE 54, COLORADO STATE 14

Brookings, S. D., Sept. 28—Ron Meyer debuted as a starter and completed 9 of 10 passes for 147 yards and two touchdowns as South Dakota State ripped Colorado State, 54-14. Reed Sanderson scored three times in the Jacks' home opener.

South Dakota State	7	20	21	6	—54
Colorado State	0	0	0	14	—14

Scoring: SDS—Dwyer 4 run (Douglas kick); Rasmussen 20 run (kick failed); Sanderson 49 punt return (Douglas kick); Sanderson 6 pass from Meyer (Douglas kick); Tramp 16 pass from Meyer (Douglas kick); Benson 2 run (Douglas kick); Glasrud 11 run (Douglas kick); CS—Morgan 10 run (Pittock kick); Burns 15 pass from Colgate (Pittock kick); SDS—Sanderson 5 run (kick failed).

SOUTH DAKOTA STATE 28, AUGUSTANA 8

Sioux Falls, S. D., Oct. 5—Strong interior line play coupled with the three-touchdown passing of Ron Meyer carried the Jackrabbits to a 28-8 triumph over Augustana in their NCC opener. Soph end Ed Maras grabbed two scoring aeriels.

South Dakota State	7	14	7	0	—28
Augustana	0	0	0	8	— 8

Scoring: SDS—Douglas 2 run (Douglas kick); Maras 19 pass from Meyer (Douglas kick); Dwyer 8 pass from Meyer (Douglas kick); Maras 3 pass from Meyer (Douglas kick); Aug.—Enns 2 run (Pierce pass from Larson).

SOUTH DAKOTA STATE 7, NORTH DAKOTA 6

Grand Forks, N. D., Oct. 12—Previously unbeaten North Dakota dropped a 7-6 verdict to South Dakota State before 9,500 Sioux homecoming fans. A fourth and goal to go screen pass from Ron Meyer to Wayne Rasmussen spanned 20 yards for the SDS score with Gale Douglas' kick providing the margin. Bob Glas ran 15 yards for a Sioux marker in the last act. Dick Wozney was halted shy of the goal on 2-point attempt.

South Dakota State	0	7	0	0	— 7
North Dakota	0	0	0	6	— 6

Scoring: SDS—Rasmussen 20 pass from Meyer (Douglas kick); ND—Glas 15 run (run failed).

SOUTH DAKOTA STATE 61, SOUTH DAKOTA 0

Brookings, S. D., Oct. 19—A deluge of 28 second period points buried arch rival South Dakota with 8,500 sitting in on the 61-0 Jackrabbit Hobo Day victory. It was the largest score ever run up by SDS against the Coyotes.

South Dakota State	6	28	14	13	—61
South Dakota	0	0	0	0	— 0

Scoring: SDS—Douglas 26 run (kick failed); Rasmussen 15 pass from Meyer (Douglas kick); Benson 14 pass from Peterson (Douglas kick); Sanderson 26 pass from Peterson (Douglas kick); Peterson 3 run (Douglas kick); Dwyer 7 pass from Meyer (Douglas kick); Nesvold 5 run (Douglas kick); Sanderson 17 pass from Webbenhurst (kick failed); Gukeisen 66 run (Douglas kick).

SOUTH DAKOTA STATE 40, NORTH DAKOTA STATE 25

Brookings, S. D., Oct. 26—In a wide-open Parents Day spectacular South Dakota State jolted North Dakota State, 40-25. The Bison, trailing by 8 points, lost the ball on downs on the SDS 33 with 1:56 left then Gale Douglas ran 72 yards for a clinching TD. Ron Meyer fired four TD passes and Wayne Rasmussen scored three times for SDS.

South Dakota State	7	13	0	20	—40
North Dakota State	0	13	6	6	—25

Scoring: SDS—Rasmussen 15 pass from Meyer (Douglas kick); NDS—T. Sturdevant 1 run (kick blocked); SDS—Tramp 39 pass from Meyer (kick failed); Rasmussen 5 run (Douglas kick); NDS—Pflipsen 22 pass from Hentges (Kinsella kick); Pflipsen 5 run (run failed); SDS—Rasmussen 56 pass from Meyer (Douglas kick); Mackenthun 15 pass from Meyer (kick failed); NDS—Pflipsen 4 run (pass failed); SDS—Douglas 72 run (Douglas kick).

SOUTH DAKOTA STATE 27, STATE COLLEGE OF IOWA 13

Brookings, S. D., Nov. 2—Surging to three first period scores, South Dakota State hurdled State College of Iowa 27-13 despite a 253-yard running rampage by Panther soph Randy Schultz. The win gave the Jacks their ninth NCC title under Coach Ralph Ginn.

South Dakota State	21	3	3	0	—27
State College of Iowa	0	7	6	0	—13

Scoring: SDS—Maras 7 pass from Meyer (kick failed); Meyer 1 run (Peterson run); Maras 24 pass interception (Douglas kick); Douglas 25 field goal; SCI—Schultz 52 run (Korver kick); SDS—Douglas 28 field goal; SCI—Schultz 1 run (kick failed).

SOUTH DAKOTA STATE 28, MORNINGSIDE 22

Sioux City, Iowa., Nov. 9—For the first time since the Nebraska game the Jackrabbits fell behind and needed a late second period tally for a halftime tie and a pair of second half markers to top Morningside 28-22. It gave SDS its first 6-game NCC sweep. Ron Meyer flipped 3 TD passes to push his total to 14, an NCC record.

South Dakota State	0	14	7	7	—28
Morningside	7	7	0	8	—22

Scoring: Mor.—Wade 8 pass from White (Kitts kick); SDS—Rasmussen 6 pass from Meyer (kick failed); Mor.—DeHeck 13 pass from White (Kitts kick); SDS—Glasrud 35 pass from Meyer (Meyer run); Meyer 5 run (Douglas kick); Rasmussen 20 pass from Meyer (Douglas kick); Mor.—Beaubien 9 pass from White (Hoogensen pass from White).

SOUTH DAKOTA STATE 17, ARKANSAS STATE 14

Jonesboro, Ark., Nov. 16—Ahead 10-0 entering the last quarter, South Dakota State suddenly was tagged with two TDs and lagged, 14-10. But quarterback Ron Meyer escorted the Jacks 81 yards, 53 of them through the air, firing a 6-yarder to Doug Peterson for the clincher with 55 seconds left. The 17-14 loss was A-State's third of year in final minute. Meyer passed for 289 yards and completed 23 pegs with Wayne Rasmussen grabbing 11 for 150 yards.

South Dakota State	0	7	3	7	—17
Arkansas State	0	0	0	14	—14

Scoring: SDS—Rasmussen 33 pass from Meyer (Douglas kick); Douglas 24 field goal. AS—Clark 2 pass from Everett (Hooper kick); Heath 56 pass from Everett (Hooper kick); SDS—Peterson 6 pass from Meyer (Douglas kick).

JACKRABBITS', FOES FARED THIS WAY 1963 SEASON

	W	L	T	Pct.	TP	OP
Nebraska	10	1	0	.909	266	115
South Dakota State	9	1	0	.900	278	166
Montana State	6	3	0	.667	195	89
North Dakota	6	3	0	.667	162	61
State College of Iowa	5	3	1	.611	187	120
Mankato State	4	4	1	.500	109	91
Drake	4	4	0	.500	133	121
Colorado State	4	5	0	.444	198	164
Fresno State	4	6	0	.400	208	242
North Dakota State	3	5	0	.375	174	164
Morningside	3	5	0	.375	167	197
Arkansas State	2	6	0	.250	159	174
Augustana	2	8	0	.200	136	200
South Dakota	1	7	0	.125	28	297

Rootin', tootin' SDSU band adds zest to grid season

WARREN HATFIELD
Director of Bands



A roarin', rootin', tootin' organization of 120 pieces again will spice South Dakota State's home football games. It's the Jackrabbit marching band, whose tingling performances have brightened many a fall afternoon for SDSU football partisans.

Under the direction of Warren Hatfield, an alumnus of Iowa's famed Rose Bowl bands, the precision-stepping show unit is not shackled by tradition. "Our show music selection depends on the demand of the theme. We'll vary from blues to a traditional show about flags," Hatfield noted.

In planning the band football shows Hatfield is limited only by these guide lines: "We'll do anything that is practical to do on the field, is intelligible to the audience and fits the theme."

Just as the preparation of a football team to meet an opponent requires much time and planning, so does the development of the band spectaculars. Hatfield spent the majority of the summer developing this fall's football halftime and pre-game shows.

Annually 200 students are candidates for the band with 120 selected and 20 others chosen as alternates. Makeup of

the band is: 10 tubas, 10 drums, 10 baritone horns, 10 trombones, 20 trumpets, 10 alto horns, 20 saxophones, 20 clarinets and 10 flutes.

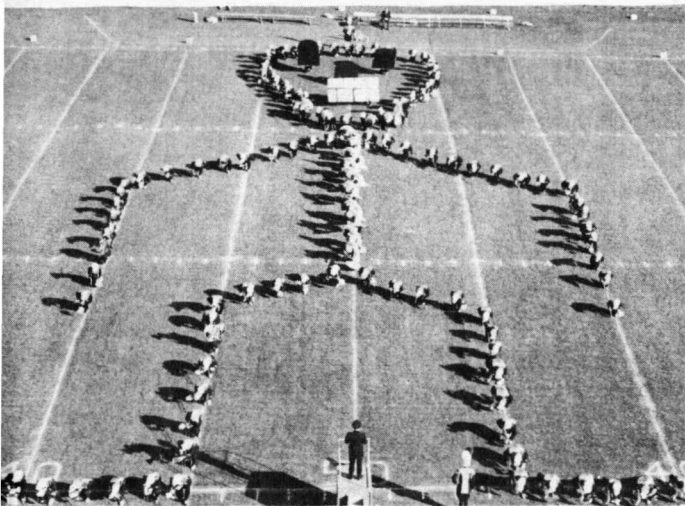
Garnishing the band complement are six or more majorettes, a head majorette and two drum majors.

Every college and every department on campus is represented in the band with less than 10 per cent of the members being music majors. The fact that bandsmen rate well academically is a source of pride to Hatfield. Members receive only half a credit for participation.

Band members practice two hours each on Mondays, Wednesdays and Fridays and rehearse two hours on Saturday mornings before performances.

New charts are given out Mondays just as the football players begin learning new plays on that day each week. Each member is numbered so he can learn his assignments. "Enthusiasm builds through the week," Hatfield advised. "Our aim is to reach a peak Saturday morning so that the band explodes at the game."

Hatfield, who was graduated from SCI in 1952 and got his master's from Iowa in 1959, asserts, "You must have



This dancing skeleton formed during the playing of "Dry Bones" at a 1963 halftime show is typical of the colorful programs staged by SDSU's band.

spirit in your band. It is a good 50 per cent of the performance. The other 50 per cent is precision in marching and basic fundamentals of musicianship."

This year the band will appear at the SCI game in Cedar Falls on Oct. 31 in addition to its home performances.

The past two years the SDSU band has performed at two Minnesota Viking home games. The appearances prompted these comments:

Charlie Johnson, executive sports editor, Minneapolis Tribune—"Speaking of exciting college bands, the South Dakota State outfit that performed at the Viking game Sunday belongs with the best."

Dick Enroth and Paul Giel, Viking announcers—"South Dakota State's band is one of the best bands we've heard or seen in Metropolitan Stadium."

Football Coach Ralph Ginn frequently pays tribute to the band and its director. "The band is a great supporter of our football team. We've always enjoyed complete cooperation and the band's send-offs have been a big boost for us."

Hatfield came here in 1961 after serving four years in the air force and teaching two years at Solon, Iowa, and two years at Hinsdale, Ill. He is working on his doctorate degree.

Fine marching bands are a cherished tradition at State, tracing their ancestry to the famous units of Carl "Christy" Christensen, band director from 1911 until 1954. He led his bands to national and international fame, including first prize in marching competition in 1939 at Winnipeg, Canada, before the King and Queen of England.



GINN: Building character is part of the job

One of Coach Ralph Ginn's pet peeves is reading or hearing a coach use the phrase "building character" in a derogative way.

"It's my firm belief that building character is part of a coach's responsibility. You build more character winning than losing," he insists. "A team that goes 8-2 develops more character than one that goes 2-8."

The man who'll direct his 18th Jackrabbit team this fall pressed his point further. "A team that wins a championship develops even more character because it has been called upon to do its utmost to win the title. The team that loses frequently, loses its desire to go that extra mile to win. That's why I feel championship football does more to build character than losing football."

In his 17 campaigns at South Dakota State Coach Ginn has had considerably more experience with championship and winning football than the other variety. His log in the North Central Conference: 68 wins, 24 losses, 8 ties, five outright titles, four co-championships. Overall the record is 99-54-8.

Preparation and confidence are vital ingredients in his coaching formula. "To do well in athletics you must be thoroughly prepared," Ginn asserts. "To perform well you must have confidence and there's only one way to gain it and that is to prepare thoroughly for the task at hand."

The white-thatched 1931 Tarkio College grad quipped that he's been accused of "being methodical." Ginn adds, "I try to cover a lot of little details that perhaps some people don't cover."

He admits to having emphasized confidence and poise. They are by-products of a well-prepared team. "If we as coaches do a thorough job of teaching and seeing to it that the squad is well prepared, it will perform well."

Ginn steadfastly contends, "It is not what happens to you that counts most but how you react to what happens." One of his favorite utterances is that "luck is the residue of desire." It follows then that the Jackrabbit boss has "a lot of admiration for the boy who can come up with the big play."

Last fall he was named one of eight candidates for the national small college coach-of-the-year award. He was regional nominee in 1961, too.

Coaching stints at Tarkio, Mo. high, his alma mater, Wayne (Neb.) State and Brookings high preceded his joining SDSU staff in 1947. Ginn, 57, obtained his master's at Missouri. He and wife, Helen, are parents of a son, R. Arnold, coach and teacher at Peoria, Ill., and daughter, Mrs. Lynda Rasmussen, a June bride of an SDSU student.

coaching staff



AMEN



HUETHER



WILLIAMSON



TORINO

HOWARD AMEN, line coach

His love of coaching and teaching brings him back to State after a 3-year business venture. Howard, an all-NCC center on the undefeated 1950 Jack team, served as freshman line coach and math instructor here from 1956 to 1961. He takes over duties vacated by Stan Marshall, new head coach at Wayne State U. Amen received his B.S. degree from State in 1951 and his master's from South Dakota in 1957. He taught math, coached and was principal at Lennox before joining SDS staff in 1956. He and wife, Natalie, have two daughters, Debra, 13, and Barbara 7.

ERVIN HUETHER, backfield coach

This will be his 15th season as backfield coach and chief scout. The conscientious, hard-working coach joined the SDSU staff in 1949 as frosh football coach. He moved up the next year and has been baseball coach here since 1950. The 1943 Yankton College grad earned his master's from Minnesota in 1950. He coached at Bowdoin and Bates Colleges in Maine and in the Navy before coming to State. Erv and wife, Beverly, have three children, Brenda, 15, Mary, 14, and David, 7.

WARREN WILLIAMSON, freshman coach

One of State's finest backs of yesteryear, he is responsible for the development of the annual crop of freshman footballers. An intense individual, he attacks his chores with much vigor and enthusiasm. He's also State's head wrestling coach. He still owns the school scoring record. Holder of both bachelor's and master's degrees from State, he coached at Clear Lake and Winner before joining State staff in 1956. He also does part of the scouting. The former all-NCC halfback and wife, Dorothy, have two children, Carolyn Jean, 10, and Tom, 8.

PETE TORINO, trainer

Working under former State track Coach Jim Emmerich as a graduate assistant in 1957-58 got him interested in the training profession. From 1958 to 1963 he was trainer and gymnastics and swimming instructor at Sioux Falls Washington high. The 1957 Black Hills State Teachers College grad received his M.S. from State in 1958. He's instructor trainer in water safety and first aid for the National Red Cross. Pete, who joined staff in September, 1963, also is gymnastics coach. He and wife, Sandra, have two sons, Peter Scott, 9, and Steven Paul, 5.



SHAW



JOHNSON

WAYNE SHAW, sports information director

Your host at Coughlin-Alumni Stadium and at all South Dakota State athletic events is Wayne F. Shaw, now in his second year as director of Sports Information. A native of Audubon, N. J. he earned his B.A. degree at the State University of Iowa in 1951. He was a newsman at Sibley, Iowa and sports writer at Ottumwa, Iowa, Twin Falls, Idaho and Boone, Iowa. He came to Brookings last September from Sioux City, Iowa where he'd served two years as a commercial reporter for The Journal. The navy veteran is a member of the College Sports Information Directors of America and the Football Writers Association. Wayne and his wife, Margie, have two daughters, Christy, 13, and Lori, 6.

JOHNNY JOHNSON, equipment manager

John A. Johnson is in his 19th consecutive year as manager of SDSU athletic supplies and equipment. His guardianship and care of equipment have won him the respect of the coaching staff. Locker room philosophizing has made him a favorite with countless athletes and a life-long friend of many. The 1927 State grad earned three football letters and played in 1926 post season game in Hawaii. Freshman coach in 1933-34, he left for 10 years returning to staff in 1944.

JACKRABBIT ITINERARY

South Dakota State will fly to its first road game at Fresno, Calif. leaving Sept. 11 and returning on Sunday, Sept. 13. It will bus to its other four away games leaving on Friday except for South Dakota game when team will depart on Saturday morning. Team will return to Brookings immediately after these games. Jackrabbit headquarters will be:

Fresno State

Hotel Fresno
Fresno, Calif.

North Dakota State

Oak Manor Lodge
Fargo, N. D.

Drake

Hotel Kirkwood
Des Moines, Iowa

State College of Iowa

Hampton Motel
Hampton, Iowa

jackrabbit sketches

Lettermen Returning

Twenty—Ends, Dave Fennig, Ed Maras, John Riedy; Tackles, Dennis Dee, Fred Holloway, Mick Hurlburt; Guards, Gary Neuharth, Vic Pepka, Bob Williams; Centers, Lyle Farrand, Tom Loquai; Quarterbacks, Ron Meyer, Bob Webbenhurst; Halfbacks, LeRoy Benson, Dave Glasrud, Terry Gukeisen, Daryl Martin, Reed Sanderson; Fullbacks, Gale Douglas, Jim Nesvold.

Lettermen Lost

Thirteen—Ends, *Bob Carr, Arden Mackenthun, Darrel Tramp; Tackle, Dave Westbrook; Guards, *Ed Havlik, Don Huls, Stan Jacobsen; Centers, Roger Larson, Jerry Ochs; Halfbacks, Jim Dwyer, Doug Peterson, Wayne Rasmussen; Fullback, Doug Tschetter.

* Underclassmen no longer on squad. Others were seniors.

LARRY ALBER—5-10, 186, 20 . . . junior fullback who is regarded as a good ball carrier and excellent squad member . . . married, one daughter . . . H. S. coach at Milledgeville, Ill. was Lester Snow . . . major is dairy science . . . son of John Woessner, farmer.

LEROY (BUTCH) BENSON—5-9, 170, 20 . . . junior letterman halfback who earned several starting assignments as soph . . . tenacious, tough, scrambling runner who finds opening . . . caught 9 passes for 127 yards . . . from Seneca . . . Faulkton high first team all-stater under Coach Clifford

Bridge . . . P. E. major . . . son of Royal Benson, farmer.

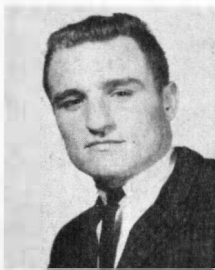
DON BROWN—6-3, 222, 20 . . . senior tackle whose reduced weight improved his quickness considerably . . . made much progress in spring . . . member Statesmen, men's vocal group . . . H. S. coach at Dell Rapids was Daryl Grayham . . . wildlife major . . . father, Ellsworth Brown, feed salesman.

MIKE BUSS—6-4, 208, 19 . . . soph end who impressed in spring practice and Alumni game . . . rated as a promising wingman . . . coach at Leeds high, Sioux City, Iowa was Gene Doran . . . zoology major . . . Father, Fred Buss, grade school principal.

ALBER



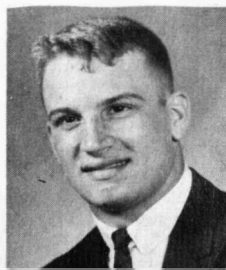
BENSON



BROWN



BUSS

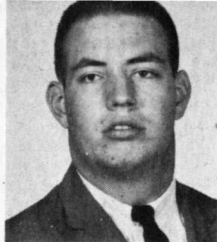




COLE



CRAVENS



DEE

BILL COLE—6-4, 220, 25 . . . junior guard whose tremendous strength and experience peg him as outstanding prospect . . . played two years at Eastern Arizona J. C. and during two-year Marine Corps hitch . . . coach at Agua Fria Union H. S., Goodyear, Ariz. was Tony Komadina . . . he calls Minneapolis home . . . P. E. major . . . Father, Eugene Cole, rancher near Los Angeles, Calif.

KENNETH CRAVENS—5-11½, 192, 19 . . . soph guard whose strongest suit is defense . . . good tackler . . . a back as prep, shifted to end and linebacker in spring . . . first team all-state offensive team at Cottonwood, Minn. for Bob Jaeger . . . engineering major . . . son of James Cravens, farmer.

DENNIS DEE—6-4, 228, 21 . . . senior tackle who has lettered two years as a regular . . . big, strong and aggressive, he has had fine soph and junior seasons . . . tri-captain who should be top leader . . . Homewood, Ill. native who was all-state under Coaches Lou Guida and Joe Magee at Mendel Catholic H. S. in Chicago . . . P. E. major . . . son of Mrs. V. J. Dee, cook.

GALE DOUGLAS—5-10, 203, 23 . . . senior fullback . . . part-time regular as soph,

leading ground gainer as junior regular with 621 net yards, 4.3 average . . . tri-captain who missed spring drills while doing National Guard stint . . . two-year letterman led scoring in '63 with 58 points . . . does PAT and field goal kicking . . . coach at Webb H. S., Reedsburg, Wis. was Nick Holmes . . . P. E. major . . . Father, Jay Douglas, insurance.

PAT DURKIN—5-11½, 188, 19 . . . soph quarterback who is good, young football player . . . has a lot of poise and is good ball handler, passer . . . highly regarded on defense . . . Riverdale, Ill. native played for Joe Magee at Mendel Catholic H. S. in Chicago . . . economics major . . . son of L. G. Shbinski, pipe fitter.

LYLE FARRAND—5-10, 205, 20 . . . senior center and two-year letterman . . . rated as good offensive pivotman . . . good squadman and leader with a lot of enthusiasm for football . . . first team all-state at Sioux Falls Washington under Grant Heckenlively . . . P. E. major . . . Father, Henry Farrand, salesman.

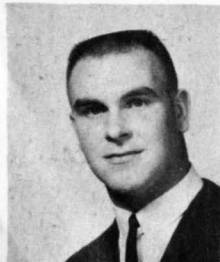
DAVE FENNIG—6-2, 198, 21 . . . senior letterman end . . . missed most of spring

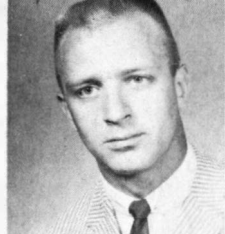
DOUGLAS

DURKIN

FARRAND

FENNIG



**GLASRUD****GUKEISEN****HESBY****HOLLOWAY**

drills due to injuries . . . has shown hustle, effort . . . Grant Heckenlively was his coach at Sioux Falls Washington . . . electrical engineering major . . . son of H. H. Fennig, Supt. of Operations, Wilson Truck System.

DAVE GLASRUD—5-10, 170, 20 . . . junior letterman halfback . . . has much all-around ability—pass, run, kick, defense . . . grabbed four passes for 73 yards and one TD in '63 and rushed for 6.4 average on his few carries . . . regular baseball shortstop . . . John Drews was his coach at John Marshall H. S., Rochester, Minn. . . . economics major . . . Father, L. E. Glasrud, manager of Skelgas retail store.

TERRY GUKEISEN—6-1, 177, 21 . . . senior letterman halfback whom coaches feel has the ability to have fine year as flanker back . . . had second longest TD rush of '63—66 yards against South Dakota . . . doubles as golfer and track high jumper in spring . . . H. S. coach at Lead was Wendell Handley . . . P. E. major . . . son of Ray Gukeisen, gold miner, Homestake Mining Co.

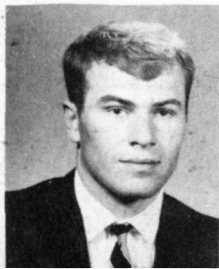
HOWARD HESBY—6-0, 191, 20 . . . junior center who is excellent squad member . . . steady player . . . Harry Prendergast was his coach at Volga H. S. . . . animal science major . . . Father, Edwin Hesby, farmer.

FRED HOLLOWAY—6-3, 220, 21 . . . senior tackle who owns two letters . . . strong, tough football player who should have good year and be regular . . . was No. 3 tackle in '63 . . . he's also wrestler . . . played for Bill Karpinski at Buchanan, Mich. H. S. . . . political science major . . . son of Fred A. Holloway, factory worker.

RICHARD (RICK) HOLM—6-3½, 218, 19 . . . soph tackle rated as a standout prospect . . . hampered as frosh by injuries but had good spring practice . . . strength, top attitude and desire are attributes . . . coaches at Rose Creek, Minn. H. S. were Dick Nihart and Terry Falk . . . animal science major . . . Father, R. E. Holm, Hormel buyer.

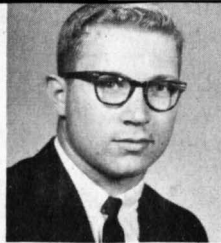
BOB HOLZWARTH—6-0, 180, 20 . . . junior end who split time between spring football and track . . . top squad member . . . has potential to play a lot of football . . . H. S. coach at Hazel was Don Tobin . . . mechanized agriculture major . . . son of Albert Holzwarth, farmer.

DICK HUGHES—6-1, 194, 19 . . . soph center with promise . . . strong defensive player who could become excellent pivotman . . . first team all-stater at Rapid City H. S. under Coach Howard Naasz . . . Father, Harold Hughes, bridge contractor.

HOLM**HOLZWARTH****HUGHES**



HURLBURT



HYDE



JOHNSON

MICK HURLBURT—6-1, 220, 19 . . . letterman junior tackle . . . made considerable progress last spring . . . tough, strong and eager . . . he's wrestler also . . . H. S. coach at Swea City, Iowa was Don Butterbaugh . . . P. E. major . . . son of Maynard Hurlburt, farmer.

GARY HYDE—6-1, 200, 18 . . . soph half-back with glowing credentials . . . impressed in spring but injuries kept him out of Alumni game . . . talented runner and fine punting prospect . . . led frosh in rushing with 259 yards, 4.1 average . . . first team all-star for Mike Stadium at Castlewood H. S. . . P. E. major . . . Father, Roland Hyde, farmer.

DEAN JOHNSON—5-10, 194, 19 . . . soph guard . . . strong, hard-nosed player . . . nicknamed "Killer" . . . played under Coaches Bill Hauck and Harold Koch at Selby H. S. . . son of Victor Johnson, farmer.

JIM KOMINEK—6-1, 194, 21 . . . junior end who joins Jacks after two years of play at Norfolk, Neb. J. C. . . only J. C. addition this year . . . made excellent prog-

ress in spring . . . he's hitter . . . Madison, Neb. native played for Dave Meyer at Stanton, Neb. H. S. . . agronomy major . . . Father, Emanuel Kominek, farmer.

TOM LOQUAI—6-2, 218, 20 . . . junior center . . . lettered as guard-tackle in '63 . . . made transition readily to new post and was squad's most improved player of spring drills . . . rugged and strong, he's got all-around ability . . . played under Coach Ed Leuthner at Kasson-Mantorville H. S., Kasson, Minn. . . P. E. major . . . son of Mrs. Dorothy Loquai, teacher.

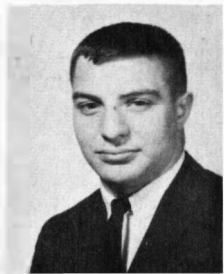
ED MARAS—6-2, 214, 19—junior end who earned all-NCC honors as soph . . . also lettered as baseball pitcher . . . his 26 pass receptions was third best season total in SDS annals . . . catches meant 327 yards, four TDs . . . has excellent hands . . . fine competitor, strong defensively . . . played Basin League ball for Sioux Falls last summer . . . H. S. coach at Windom, Minn. was Charles Reynolds . . . pre-veterinary major . . . Father, John Maras, farmer.

DARYL MARTIN—5-11½, 188, 21 . . . sen-

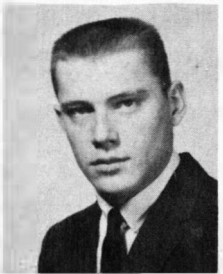
KOMINEK



LOQUAI



MARAS



MARTIN





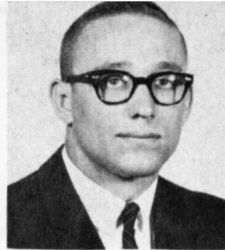
MEYER



NELSON



NESVOLD



NEUHARTH

ior halfback who was shelved by pre-season knee injury in '63 . . . two-year letterman, tri-captain . . . fine defensive back . . . above average receiver . . . should be good leader, captain . . . sings tenor with Muscle-Tones, campus barbershop quartet . . . H. S. coach at Wagner was Richard Fuller . . . P. E. major . . . son of Nyle Martin, farmer.

RON MEYER—6-3, 205, 20 . . . junior quarterback who rewrote school passing record book en route to all-NCC honors . . . ranked 37th nationally with 1,091 yards in aerial gains . . . 19 TD passes tied him for second in nation among college passers . . . completed 63.1% of tosses . . . set six SDS records and tied two others as soph . . . has thrown at least one TD pass in every college game . . . total offense leader in '63 with 1,077 yards . . . also lettered as baseball pitcher-first baseman . . . H. S. coach at Wells, Minn. was John Drugg . . . P. E. major . . . Father, Arnold Meyer, power plant foreman.

BOB NELSON—6-2, 220, 19 . . . soph tackle whose field goal in final 22 seconds let varsity nip Alumni 15-14 last spring . . . progress in spring was encouraging . . . rated good place kicker . . . coach at Volga was Harry Prendergast . . . ag major . . . son of Arne Nelson, farmer .

JIM NESVOLD—6-1, 204, 20 . . . junior

letterman fullback who was defensive regular late in '63 . . . gives Jacks solid 1-2 full-backing in '64 . . . figures to share job with Gale Douglas . . . had good spring, runs tough . . . first team all-state at Madison, Minn. under Emory Fillmore . . . ag major . . . Father, Ed Nesvold, farmer.

GARY NEUHARTH—5-10, 193, 21 . . . senior guard with two letters . . . good all-around lineman . . . does everything well fundamentally . . . fine blocker . . . steady performer who could be regular . . . first team all-state at Sioux Falls Washington under Grant Heckenlively . . . economics major . . . son of Arthur Neuharth, John Morrell & Co., lamb grader.

RAYMOND (JACK) NOVAK—5-10, 174, 19 . . . soph halfback who is tough football player, good blocker and punter . . . H. S. coach at Hoven was Fran Heinen . . . pharmacy major . . . Father, R. J. Novak, high school teacher.

VIC PEPKA—6-5½, 222, 20 . . . junior letterman tackle . . . finished strong in '63 and has grown since . . . lettered as track weightman . . . has abundant potential . . . one of squad's best juniors . . . first team all-state at Milbank under Rollie Greeno . . . married . . . economics major . . . son of Mrs. Bernice Pepka.

TED REICHMANN—5-9½, 180, 19 . . .

NOVAK



PEPKA



REICHMANN





RIEDY



ROACH



RUST

soph fullback who needs to increase speed to project self into defensive plans . . . tough, hard-nosed . . . first team all-state on defense at Villard, Minn. under Coach Bob Blaine . . . pharmacy major . . . Father, Clarence Reichmann, farmer.

JOHN RIEDY—6-1, 192, 20 . . . letterman junior end . . . fastest wingman . . . determined competitor . . . good receiver . . . fine student . . . should be among top contenders for regular job . . . played at Lemmon for Bert Leidholt . . . son of John R. Riedy, farmer.

MIKE ROACH—6-1½, 205, 21 . . . junior tackle who was on '62 squad but not in school last fall . . . tough football player . . . first team all-stater at Rapid City Cathedral under Coach Joe Donnelly . . . P. E. major . . . son of Mrs. Dorothy Roach .

STEVE RUST—6-0, 175, 20 . . . soph half-back played on '62 frosh squad . . . prospect as either flanker back or split end . . . first team all-state on offense under Coach Lowell Barsness at Adrian, Minn. . . wildlife major . . . Father, Kenneth Rust, farmer near Lis-more, Minn.

REED SANDERSON—5-7, 169, 20 . . .

junior letterman halfback who caught three passes in '63—all for TDs . . . led team in punt, kickoff returns . . . good hands make him good receiver . . . scooter as runner . . . track letterman . . . from Aurora, he played at Brookings for Bill Gibbons . . . wildlife major . . . son of Cecil Sanderson, district extension supervisor.

MIKE SHEAHAN—6-1, 198, 20 . . . soph end who is a tough, reckless football player . . . more proficient on defense . . . he comes to play . . . at Mendel Catholic in Chicago he played under Coaches Lou Guida and Joe Magee . . . political science major . . . Father, Joseph Sheahan, policeman.

TERRY SORENSEN—6-1, 172, 19 . . . soph quarterback who understudied Pat Durkin with '63 frosh . . . has shown defensive talent . . . good athlete who appears ticketed for action . . . H. S. coach at Tyler, Minn. was Les Lyons . . . pharmacy major . . . Father, Evald Sorensen, custodian.

BOB WEBBENHURST—6-0, 172, 21 . . . senior letterman quarterback who finished spring drills with a surge . . . holds for placements . . . good squadman who should make contribution through leadership, poise and play . . . H. S. coach at Brookings was Bill Gibbons . . . civil engineering major . . . son of Charles Webbenhurst, school administrator.

SANDERSON



SHEAHAN

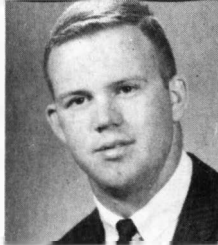


SORENSEN

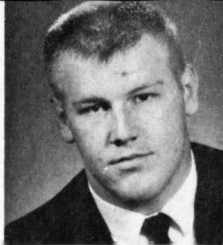


WEBBENHURST





WELLS



WILLIAMS



WITTLER

MIKE WELLS—6-1, 185, 20 . . . junior guard and linebacker . . . lettered at Gustavus Adolphus as frosh . . . should help squad if he can avoid injuries which have hampered him . . . main forte is defense . . . married . . . H. S. coaches were Duane Rhykus at Balaton, Minn. and Arling Anderson at Luverne, Minn. . . math major . . . son of Vincent Wells, businessman.

BOB WILLIAMS—5-11, 221, 21 . . . senior guard who played some outstanding football in '63 while earning second letter . . . quick,

agile, strong on defense . . . missed spring practice . . . first team all-stater at Watertown under Coach John DeWitt . . . psychology major . . . son of W. C. Williams, resort owner.

DALE WITTLER—5-11½, 200, 20 . . . junior guard who is an excellent tackler . . . '63 squadman but did not letter . . . speed rated as good . . . played under Coach Raymond Beal at Spirit Lake, Iowa . . . sociology major . . . Father, Elmer Wittler, farmer.

SDS ATHLETIC DIRECTORY

Athletic Director

Dr. Axel Bundgaard (Midland, 1939)

Ticket Manager

Harry Forsyth (SDSU, 1951)

Faculty Representative

Herbert B. MacDougal
(Miami, O., 1927)

Football Coach and

Associate Director

Ralph A. Ginn (Tarkio, 1931)

Line Coach

Howard Amen (SDSU, 1951)

Backfield Coach

Ervin Huether (Yankton, 1943)

Freshman Coach

Warren Williamson (SDSU, 1951)

Basketball Coach

James D. Iverson (Kansas State, 1952)

Assistant Basketball Coach

James Marking (SDSU, 1950)

Track Coach

Glenn E. Robinson (Monmouth, 1932)

Cross Country Coach

Dr. Tom Woodall
(Iowa Wesleyan, 1957)

Gymnastics Coach

Pete Torino (BHTC, 1957)

Wrestling Coach

Warren Williamson

Baseball Coach

Ervin Huether

Assistant Baseball Coach

Harry Forsyth

Golf Coach

Jim Iverson

Tennis Coach

Jim Marking

Trainer

Pete Torino

Equipment Manager

John A. Johnson (SDSU, 1927)

Director of Graduate Program

Glenn E. Robinson

Sports Information Director

Wayne F. Shaw (Iowa, 1951)

roster of players

Name	Pos.	Ht.	Wt.	Age	Cl.	Major	Hometown
Larry Alber	FB	5-10	186	20	Jr.	Dairy Sci.	Milledgeville, Ill.
° LeRoy Benson	HB	5-9	170	20	Jr.	Phys. Ed.	Seneca
Don Brown	T	6-3	222	20	Sr.	Wildlife	Dell Rapids
Mike Buss	E	6-4	208	19	So.	Zoology	Sioux City, Iowa
Bill Cole	G	6-4	220	25	Jr.	Phys. Ed.	Minneapolis, Minn.
Ken Cravens	G	5-11½	192	19	So.	Engineering	Cottonwood, Minn.
°° † Dennis Dee	T	6-4	228	21	Sr.	Phys. Ed.	Homewood, Ill.
°° † Gale Douglas	FB	5-10	203	23	Sr.	Phys. Ed.	Reedsburg, Wis.
° Pat Durkin	QB	5-11½	188	19	So.	Economics	Riverdale, Ill.
°° Lyle Farrand	C	5-10	205	20	Sr.	Phys. Ed.	Sioux Falls
° Dave Fennig	E	6-2	198	21	Sr.	Elec. Eng.	Sioux Falls
° Dave Glasrud	HB	5-10	170	20	Jr.	Economics	Rochester, Minn.
° Terry Gukeisen	HB	6-1	177	21	Sr.	Phys. Ed.	Lead
Howard Hesby	C	6-0	191	20	Jr.	Animal Sci.	Volga
°° Fred Holloway	T	6-3	220	21	Sr.	Pol. Sci.	Buchanan, Mich.
Rick Holm	T	6-3½	218	19	So.	Animal Sci.	Rose Creek, Minn.
Bob Holzwarth	E	6-0	180	20	Jr.	Mech. Ag.	Hazel
Dick Hughes	C	6-1	194	19	So.	Undecided	Rapid City
° Mick Hurlburt	T	6-1	220	19	Jr.	Phys. Ed.	Swea City, Iowa
Gary Hyde	HB	6-1	200	18	So.	Phys. Ed.	Castlewood
Dean Johnson	G	5-10	194	19	So.	Undecided	Selby
Jim Kominek	E	6-1	194	21	Jr.	Agronomy	Madison, Neb.
° Tom Loquai	C	6-2	218	20	Jr.	Phys. Ed.	Kasson, Minn.
° Ed Maras	E	6-2	214	19	Jr.	Pre-Vet	Windom, Minn.
°° † Daryl Martin	HB	5-11½	188	21	Sr.	Phys. Ed.	Wagner
° Ron Meyer	QB	6-3	205	20	Jr.	Phys. Ed.	Wells, Minn.
Bob Nelson	T	6-2	220	19	So.	Agriculture	Volga
° Jim Nesvold	FB	5-10	204	20	Jr.	Phys. Ed.	Sioux Falls
Jack Novak	HB	5-10	174	19	So.	Economics Pharmacy	Hoven
° Vic Pepka	G	6-5½	222	20	Jr.	Economics	Milbank
Ted Reichmann	FB	5-9½	180	19	So.	Pharmacy	Villard, Minn.
° John Riedy	E	6-1	192	20	Jr.	Undecided	Lemmon
Mike Roach	T	6-1½	205	21	Jr.	Phys. Ed.	Rapid City
Steve Rust	HB	6-0	175	20	So.	Wildlife	Adrian, Minn.
° Reed Sanderson	HB	5-7	169	20	Jr.	Wildlife	Aurora
Mike Sheahan	E	6-1	198	20	So.	Pol. Sci.	Chicago, Ill.
Ted Sorensen	QB	6-1	172	19	So.	Pharmacy	Tyler, Minn.
° Bob Webbenhurst	QB	6-0	172	21	Sr.	Civil Eng.	Brookings
Mike Wells	G	6-1	185	20	Jr.	Mathematics	Luverne, Minn.
°° Bob Williams	G	5-11	221	21	Sr.	Psychology	Watertown
Dale Wittler	G	5-11½	200	20	Jr.	Sociology	Spirit Lake, Iowa

° Denotes letters earned.

† Tri-Captain.

Team Managers: Bob Oleson, Jr., Northbrook, Ill.; Jim Webbenhurst, Jr., Brookings.

Pronunciation Guide

Buss	Bus	Loquai	LOCK-way
Durkin	DER-kin	Maras	MARs
Farrand	FAIR-rund	Neuharth	NEW-harth
Glasrud	GLASS-rude	Novak	NOV-ah-k
Gukeisen	Gook-EYE-sen	Reichmann	REICH-man
Hurlburt	HURL-ber-t	Riedy	REED-y
Kominek	KOM-in-ick	Sheahan	SHE-han

record against 1964 opponents

MONTANA STATE

	SDS	MS
1956	14	33
1957	6	13
1958	6	23
1959	0	27
1960	20	14
1961	12	17
1962	10	14
1963	9	6
	77	147

W-2; L-6

FRESNO STATE

(First meeting)

AUGUSTANA

	SDS	AUG.
1931	49	0
1946	26	6
1947	33	12
1948	20	6
1949	28	0
1950	20	12
1951	58	7
1952	47	6
1953	55	0
1954	68	0
1955	28	0
1956	20	21
1957	16	0
1958	20	6
1959	0	13
1960	20	21
1961	41	14
1962	28	7
1963	28	8
	605	139

W-16; L-3

N. D. STATE U.

	SDS	NDSU
1903	0	85
1908	11	5

1909	5	11
1910	6	3
1911	14	3
1913	7	6
1915	21	0
1917	21	14
1919	0	0
1920	27	7
1921	54	0
1922	13	0
1923	13	14
1924	14	0
1925	3	3
1926	21	0
1927	34	0
1928	27	6
1929	0	0
1930	0	24
1931	7	0
1932	6	12
1933	13	7
1934	38	0
1935	6	7
1936	0	7
1937	13	6
1938	6	13
1939	6	0
1940	7	0
1941	0	25
1942	14	0
1946	0	6
1947	7	0
1948	7	6
1949	33	13
1950	60	0
1951	7	7
1952	14	48
1953	32	14
1954	50	13
1955	33	7
1956	9	26
1957	32	14
1958	20	33
1959	6	8
1960	14	14
1961	41	12
1962	17	6

1963	40	25
	829	510

W-31; L-14; T-5

U. OF NORTH DAKOTA

	SDS	UND
1906	5	4
1907	6	24
1914	14	3
1915	0	0
1916	14	7
1917	13	6
1919	9	7
1920	3	6
1921	27	14
1922	6	16
1923	6	12
1924	7	6
1926	6	0
1928	0	6
1929	6	7
1930	0	21
1931	6	34
1932	0	13
1933	18	2
1934	0	6
1935	6	6
1936	6	33
1938	0	37
1939	14	13
1940	0	6
1941	15	33
1942	8	19
1948	6	31
1949	0	19
1950	21	21
1951	21	12
1952	60	6
1953	13	13
1954	34	20
1955	14	6
1956	14	13
1957	53	21
1958	12	30
1959	6	0

1960	23	27
1961	13	14
1962	26	0
1963	7	6
	518	580

W-19; L-20; T-4

U. OF SOUTH DAKOTA

	SDS	USD
1889	6	6
1900	0	17
1901	0	22
1902	0	10
1904	6	6
1905	0	17
1906	0	22
1910	0	33
1911	6	15
1912	7	73
1914	0	12
1915	0	7
1919	13	6
1920	3	7
1921	9	0
1922	7	7
1923	7	0
1924	10	3
1925	7	0
1926	0	0
1927	12	16
1928	13	0
1929	6	0
1930	13	6
1931	0	10
1932	0	0
1933	0	6
1933	14	0
1934	19	0
1935	2	7
1936	0	6
1937	2	12
1938	0	7
1939	7	21
1940	0	26
1941	0	40
1942	0	7
1946	20	0
1947	7	26
1948	0	33
1949	27	25
1950	54	28
1951	6	26
1952	21	21
1953	25	0
1954	20	19

1955	27	7
1956	14	19
1957	21	13
1958	7	28
1959	12	7
1960	28	7
1961	34	6
1962	24	0
1963	61	9
	577	692

W-22; L-27; T-6

MORNINGSIDE

	SDS	MORN.
1922	48	0
1923	24	26
1924	34	0
1926	21	6
1927	44	7
1928	13	7
1929	38	0
1930	0	13
1931	20	0
1932	26	6
1933	21	6
1934	7	13
1935	12	6
1936	0	13
1937	0	7
1938	14	13
1939	34	13
1940	6	6
1941	3	0
1942	3	0
1946	0	0
1947	13	0
1948	13	18
1949	27	20
1950	31	7
1951	28	26
1952	39	25
1953	31	29
1954	34	39
1955	21	21
1956	28	13
1957	7	7
1958	26	6
1959	32	34
1960	22	0
1961	56	0
1962	41	7
1963	28	22
	845	416

W-26; L-8; T-4

STATE COLLEGE OF IOWA (Formerly IOSTC)

	SDS	SCI
1935	13	22
1936	13	0
1937	0	33
1940	2	12
1941	0	21
1942	0	38
1945	7	58
1946	6	6
1948	7	33
1949	14	13
1950	34	13
1951	48	6
1952	34	47
1953	52	19
1954	41	20
1955	34	21
1956	31	27
1957	23	20
1958	13	8
1959	12	14
1960	0	12
1961	36	13
1962	13	13
1963	27	13
	460	482

W-12; L-10; T-2

DRAKE

	SDS	DU
1945	0	34
1948	0	47
1949	0	40
1957	7	25
1958	12	6
	19	152

W-1; L-4

MANKATO STATE

	SDS	MS
1937	40	7
1954	66	0
1957	20	6
	126	13

W-3; L-0

1963 team statistics

FIRST DOWNS	SDS	OPP.
By Rushing	86	89
By Passing	62	40
By Penalty	6	
Total	154	137

RUSHING		
Attempts	443	428
Yards Gained	1792	1976
Yards Lost	224	263
Net Gain	1568	1713
Gain Per Att.	3.5	4.0

PASSING		
Attempted	173	152
Completed	96	55
Had Intercepted	4	19
Yards Net Gain	1325	838
Completion Pct.	.555	.362
TD passes	23	8

TOTAL OFFENSE		
Total Plays	616	580
Net Gain Rushing	1568	1713
Net Gain Passing	1325	838
Total Yards	2893	2551
Ave. Per Play	4.6	4.4

PUNTING		
No., Yards	(43)1367	(35)1069
Had Blocked	0	
Ave. Per Punt	31.8	30.5

FUMBLES		
Number	21	29
Number Lost	9	23

INTERCEPTIONS		
No., Yards Ret.	(19)225	(4)52
Touchdowns	1	0

PUNT RETURNS		
No., Yards Ret.	(18)154	(19)150
Touchdowns	1	

KICKOFF RETURNS		
No., Yards Ret.	(34)537	(44)805
Touchdowns	0	0

PENALTIES		
No. Yards Penalized	(50)482	(44)443

SCORING		
Touchdowns	39	24
Pass Conversions	0-0	2-4
Run Conversions	2-2	0-2
Kick Conversions	28-37	16-18
Field Goals	4-8	0-0
Safeties		
Total Points	278	166

individual statistics

TOTAL OFFENSE	TP	Yds. Rush	Yds. Pass	Net Gain	Play Ave.
Ron Meyer	165	-14	1091	1077	6.5
Gale Douglas	146	621	0	621	4.3
Wayne Rasmussen	83	354	-6	348	4.2
Doug Peterson	61	68	185	253	4.1
Jim Dwyer	58	171	0	171	2.9
LeRoy Benson	29	119	8	127	4.4
Terry Gukeisen		74	0	74	12.3
Bob Webbenhurst	18	16	47	63	3.5
Jim Nesvold	18	56	0	56	3.1
Dave Glasrud	11	51	0	51	4.6
Doug Tschetter	10	28	0	28	2.8
Reed Sanderson	11	24	0	24	2.2

SCORING	TD	PAT Att.			PAT made			FG	Pts.
		R	P	K	R	C	K		
*Gale Douglas	3	■	□	37	□	□	28	4	58
Wayne Rasmussen	9	■	□	0	□	■	■	□	54
Ed Maras	■	■	0	■	□	■	■	□	30
Reed Sanderson	■	□	0	□	□	■	■	□	30
Darrel Tramp	■	■	0	□	□	■	■	□	18
Jim Dwyer	■	■	0	■	□	■	■	□	18
Doug Peterson	■	■	0	□	■	■	■	□	14
Ron Meyer	2	■	■	■	■	■	■	□	14
LeRoy Benson	■	■	□	□	□	0	■	□	12
Dave Glasrud	■	■	0	□	■	0	■	□	12
Arden Mackenthun	■	■	0	■	■	■	■	■	6
Jim Nesvold	■	■	0	□	□	■	0	□	■
Terry Gukeisen	■	■	0	■	■	0	■	■	■

*Kicked 4 of 8 field goal attempts. (R) Run (P) Pass (K) Kick (C) Catch

RUSHING	TC	YG	YL	NG	Ave.	INTERCEPTIONS	No.	Yds.	TD's	
Gale Douglas	146	633	12	621	4.3	Wayne Rasmussen	■	37	□	
Wayne Rasmussen	82	374	20	354	4.3	Roger Larson	■	21	□	
Jim Dwyer	57	184	13	171	3.0	Dave Glasrud	■	27	□	
LeRoy Benson	28	121	2	119	4.3	Doug Peterson	■	9	□	
Terry Gukeisen	6	81	7	74	12.3	Don Huls	■	■	□	
Doug Peterson	28	106	38	68	2.4	Jim Dwyer	■	74	□	
Jim Nesvold	18	56	■	56	3.1	LeRoy Benson	■	33	□	
Dave Glasrud	■	51	■	51	6.4	Ed Maras	■	24	■	
Doug Tschetter	10	28	■	28	2.8					
Reed Sanderson	11	27	■	24	2.2					
Bob Webbenhurst	6	16	0	16	2.7					
Ron Meyer	43	115	129	-14						
						PUNTING	No.	Yds.	Blk.	Ave.
						W. Rasmussen	38	1218	0	32.1
						Dave Glasrud	■	149	0	29.8

PASSING	Att.	Comp.	Had Int.	Pct.	Net Gain	TD	PUNT RETURNS	No.	Yds.	TD
Ron Meyer	122	77	4	.631	1091	19				
Doug Peterson	33	14	■	.424	185	■	Reed Sanderson	■	101	1
Bob Webbenhurst	12	■	■	.250	47	■	Wayne Rasmussen	■	19	□
Dave Glasrud	■	□	■	.000	0	□	Dave Glasrud	■	16	□
LeRoy Benson	■	■	■	1.000	8	□	LeRoy Benson	■	10	■
Jim Dwyer	■	□	■	.000	0	□	Jim Dwyer	■	8	□
Wayne Rasmussen	■	■	0	1.000	-6	□	Doug Peterson	■	■	□

RECEIVING	Cgt.	Yds.	TD's	KICKOFF RETURNS	No.	Yds.	TD
Wayne Rasmussen	29	463	■				
Ed Maras	26	327	4	Reed Sanderson	11	222	□
Darrel Tramp	9	195	■	LeRoy Benson	4	88	□
LeRoy Benson	■	127	■	Wayne Rasmussen	4	79	□
Doug Peterson	■	20	■	Jim Dwyer	3	68	□
Dave Glasrud	4	73	■	Ed Maras	■	30	□
Arden Mackenthun	4	35	1	Arden Mackenthun	■	20	□
Jim Dwyer	4	33	2	Darrel Tramp	■	15	□
Reed Sanderson	3	49	■	Larry Alber	■	12	□
Dave Fennig	■	13	■	Dave Fennig	■	3	□
Jim Nesvold	■	0	■	Gary Neuharth	■	0	□
Terry Gukeisen	■	-10	■	Bob Williams	■	■	□

NCC

football

championships

- | | |
|---|--|
| <p>1922—SOUTH DAKOTA STATE
 1923—Morningside
 1924—SOUTH DAKOTA STATE
 1925—Creighton & North Dakota St.
 1926—SOUTH DAKOTA STATE
 1927—Creighton & South Dakota U.
 1928—North Dakota U.
 1929—North Dakota U.
 1930—North Dakota U.
 1931—North Dakota U.
 1932—North Dakota State
 1933—SOUTH DAKOTA STATE
 1934—North Dakota U.
 1935—North Dakota U.
 1936—North Dakota U.
 1937—North Dakota U.
 1938—South Dakota U.</p> | <p>1939—SOUTH DAKOTA STATE, South Dakota U., North Dakota U.
 1940—Iowa State Teachers
 1941—Iowa State Teachers
 1942—Iowa State Teachers & Augustana
 1943-45—no conference competition
 1946—Iowa State Teachers
 1947—Iowa State Teachers & South Dakota U.
 1948—Iowa State Teachers
 1949—SOUTH DAKOTA STATE & Iowa State Teachers
 1950—SOUTH DAKOTA STATE
 1951—South Dakota U.
 1952—Iowa State Teachers
 1953—SOUTH DAKOTA STATE
 1954—SOUTH DAKOTA STATE & Morningside
 1955—SOUTH DAKOTA STATE
 1956—Morningside
 1957—SOUTH DAKOTA STATE
 1958—North Dakota U.
 1959—Augustana
 1960—Iowa State Teachers (now State College of Iowa)
 1961—SOUTH DAKOTA STATE and State College of Iowa
 1962—SOUTH DAKOTA STATE and State College of Iowa
 1963—SOUTH DAKOTA STATE</p> |
|---|--|

1963 all-conference team

- Ends: Darrel Tramp, SDS; ED MARAS, SDS
 Tackles: Dave Westbrook, SDS; Neil Reuter, UND
 Guards: JIM JACKSON, SCI; DON GULSETH, UND
 Center: Jerry Ochs, SDS
 Quarterback: RON MEYER, SDS
 Halfbacks: Wayne Rasmussen, SDS; Larry Thompson, SCI
 Fullback: RANDY SCHULTZ, SCI
 Most Valuable: Lineman, Reuter; Back, Rasmussen

Names capitalized indicate 1964 returnees

SDSU record

in north central conference football

Year	W	L	T	Points	Opponents	Place
1922	4	1	1	111	37	Champion
1923	2	3	0	78	51	Fourth
1924	5	0	0	75	16	Champion
1925	1	1	2	13	25	Fifth
1926	3	0	2	56	14	Champion
1927	2	2	0	90	36	Third
1928	3	1	0	53	19	Second
1929	2	1	1	50	7	Second
1930	1	3	0	13	64	Fourth
1931	2	2	0	33	44	Second
1932	1	2	1	32	31	Fourth
1933	4	0	0	66	15	Champion
1934	2	2	0	65	19	Fourth
1935	1	3	1	39	48	Tie for Third
1936	1	4	1	19	59	Seventh
1937	2	3	0	44	58	Sixth
1938	2	3	0	48	76	Fourth
1939	4	1	0	68	53	Co-Champion
1940	2	3	1	16	50	Fifth
1941	1	5	0	18	131	Seventh
1942	3	3	0	45	64	Fourth
1943-45	No Conference competition					
1946	2	1	2	52	18	Third
1947	3	1	0	60	38	Third
1948	2	4	0	53	127	Tie for Fourth
1949	5	1	0	129	90	Co-Champion
1950	5	0	1	220	81	Champion
1951	4	1	1	168	84	Second
1952	3	2	1	215	153	Tie for Third
1953	5	0	1	208	75	Champion
1954	5	1	0	247	111	Co-Champion
1955	5	0	1	157	62	Champion
1956	3	3	0	116	119	Tie for Fourth
1957	5	0	1	152	75	Champion
1958	3	3	0	98	111	Tie for Third
1959	2	4	0	68	76	Sixth
1960	2	3	1	107	81	Tie for Fourth
1961	5	1	0	221	59	Co-Champion
1962	5	0	1	149	33	Co-Champion
1963	6	0	0	191	74	Champion
Totals	118	68	20	3643	2384	



1963 final NCC summary

PASSING	G	Att.	*Comp.	Int.	Pct.	Y ds.	TD
Frank Hentges, NDS	■	99	43	■	.434	691	■
Larry White, Mor.	■	98	42	4	.429	503	■
Ron Meyer, SDS	■	65	40	4	.615	607	14
Rollie Larson, Aug.	■	49	27	6	.551	382	3
Dick Lange, SCI	■	57	22	■	.386	287	0
Fred Gephart, USD	■	53	19	3	.358	172	0
Bob Glas, UND	■	43	13	8	.302	225	4
Rich Oliphant, SCI	■	28	13	■	.464	178	2
Doug Peterson, SDS	■	14	8	■	.571	85	■
Jim Hettinger, USD	■	18	7	■	.389	67	■

RUSHING	G	No.	*Yds.	Ave.	TOTAL OFFENSE	G	Plays	*Yds.	Ave.
Randy Schultz, SCI	■	95	635	6.6	Frank Hentges, NDS	■	122	721	5.9
Les Josephson, Aug.	■	103	511	4.9	Randy Schultz, SCI	■	95	635	6.6
Gale Douglas, SDS	■	87	420	4.8	Ron Meyer, SDS	■	86	597	6.9
Bill Sturdevant, NDS	■	70	358	5.1	Larry White, Mor.	■	135	551	4.1
Dan Neppel, UND	■	65	300	4.6	Rollie Larson, Aug.	■	105	548	5.2
Ed Pflipsen, NDS	■	48	278	5.8	Les Josephson, Aug.	■	103	511	4.9
Jerry Enns, Aug.	■	53	273	5.2	Gale Douglas, SDS	■	87	420	4.8
Larry Thompson, SCI	■	55	258	4.7	Bob Glas, UND	■	88	391	4.4
Pete Porinsh, UND	■	31	242	7.8	Bill Sturdevant, NDS	■	72	358	5.0
Rich DeHeck, Mor.	■	55	233	4.2	Dan Neppel, UND	■	65	300	4.6
Bruce Montgomery, SCI	■	34	219	6.4	Ed Pflipsen, NDS	■	51	278	5.5
Dave Osborn, UND	■	53	212	4.0					
Wayne Rasmussen, SDS	■	44	212	4.8	*decides leadership				

RECEIVING	G	*No.	Yds.	TD	SCORING	G	TD	PAT (2-1)	FG	*TP
Ron Hanson, NDS	■	17	372	■	Ed Pflipsen, NDS	■	■	0-0	■	48
Ed Maras, SDS	■	17	212	■	Larry Thompson, SCI	■	■	1-8	■	46
Wayne Rasmussen, SDS	■	15	263	■	Gale Douglas, SDS	■	■	0-19	■	43
Bob Anderson, Aug.	■	13	198	■	Wayne Rasmussen, SDS	■	■	0-0	■	42
Larry Thompson, SCI	■	12	112	■	Randy Schultz, SCI	■	■	0-0	■	30
Bill Sturdevant, NDS	■	10	90	■	Bob Glas, UND	■	■	1-0	■	26
Mike Nelson, Aug.	■	9	129	■	Les Josephson, Aug.	■	4	0-0	■	24
Ken Hoogensen, Mor.	■	■	121	■	Ed Maras, SDS	■	4	0-0	■	24
Rich DeHeck, Mor.	■	■	106	■	Pete Porinsh, UND	■	2	0-12	■	24
Jerry Hauck, USD	■	■	59	■	Bill Sturdevant, NDS	■	4	0-0	■	24
Gary Beaubien, Mor.	■	■	121	■						

PUNTING	G	No.	Yds.	*Ave.	KICK RETURNS	G	No.	*Yds.	Ave.
Rich Steffens, Mor.	■	18	668	37.1	Rich DeHeck, Mor.	■	19	247	41.2
Mike Kinsella, NDS	■	30	1046	34.86	Bruce Montgomery, SCI	■	13	231	38.5
Bob Glas, UND	■	27	941	34.85	Gary Beaubien, Mor.	■	10	196	32.7
Howard Simpson, SCI	■	18	598	33.2	Ed Pflipsen, NDS	■	12	178	29.7
Deany Hanson, USD	■	34	1122	33.0	Roger Smith, USD	■	10	159	26.5
Wayne Rasmussen, SDS	6	24	787	32.8	Al Kloppen, Aug.	■	14	155	25.8
Jim Stearns, Aug.	■	11	355	32.3	Bill Sturdevant, NDS	■	14	151	25.2
Steve Dee, Mor.	■	11	315	28.6	Ray Paslay, USD	■	9	143	23.8

* decides leadership

Stan Wright, UND 141 23.5
 Bruce Smebakken, USD 121 20.2
 Bruce Airheart, NDS 114 19.0
 Andy Ness, Mor. 109 18.2

TEAM TOTALS

TOTAL OFFENSE					TOTAL DEFENSE				
	G	Plays	Yds.	* Ave.		G	Plays	Yds.	* Ave.
SCI	■	400	2091	348.5	UND	■	345	1205	200.8
NDS	■	380	1875	312.5	SCI	■	339	1308	218.0
SDS	■	347	1774	295.7	SDS	■	366	1415	235.8
Aug.	■	363	1722	287.0	Aug.	■	365	1571	261.8
Mor.	■	394	1648	274.7	NDS	■	376	1676	279.3
UND	■	353	1570	261.7	Mor.	■	347	1989	331.5
USD	■	310	1024	170.7	USD	■	408	2540	423.3

RUSHING					SCORING					PAT								
	G	Plays	Yds.	* Ave.		G	TD	(2-1)	FG	TP	* Ave.		G	TD	(2-1)	FG	TP	* Ave.
SCI	■	311	1588	264.7	SDS	■	27	2-19	■	191	31.8							
UND	■	294	1269	211.5	SCI	■	21	2-13	■	149	24.8							
Aug.	■	289	1258	209.7	NDS	■	22	2-9	■	145	24.2							
NDS	■	261	1136	189.3	UND	■	16	1-12	■	110	18.3							
Mor.	■	286	1059	176.5	Mor.	■	16	2-7	■	107	17.8							
SDS	■	254	1045	174.2	Aug.	■	12	2-3	■	79	13.2							
USD	■	212	692	115.3	USD	■	1	1-1	■	21	3.5							

PASSING		G	Att.	Comp.	Pct.	Yds.	TD	* Ave.
North Dakota State	■	6	119	49	.411	739	■	123.2
South Dakota State	■	6	93	52	.559	729	17	121.5
Morningside	■	■	108	36	.333	589	8	98.2
State College of Iowa	■	■	89	36	.404	503	■	83.8
Augustana	■	■	74	33	.446	464	4	77.3
University of South Dakota	■	■	98	32	.327	332	1	55.3
University of North Dakota	■	■	59	19	.322	301	6	50.2

RUSHING DEFENSE					PASS DEFENSE				
	G	Plays	Yds.	* Ave.		G	Att. - Comp.	Yds.	* Ave.
UND	■	258	738	123.0	Aug.	■	66-25	286	47.7
SCI	■	249	915	152.5	SCI	■	90-27	393	65.6
SDS	■	258	918	153.0	UND	■	87-39	467	77.8
NDS	■	259	1076	179.3	SDS	■	108-36	497	82.8
Aug.	■	399	1285	214.2	Mor.	■	74-38	563	93.8
Mor.	■	273	1426	237.7	NDS	■	117-47	600	100.0
USD	■	310	1689	281.5	USD	■	98-55	851	141.8

FINAL 1963 NCC STANDINGS

	W	L	PCT	TP	OP
South Dakota State	■	■	1.000	191	74
North Dakota University	4	■	.667	110	29
State College of Iowa	4	■	.667	149	74
North Dakota State	■	■	.500	145	113
Augustana	■	4	.333	79	113
Morningside	■	5	.167	107	158
South Dakota University	■	5	.167	21	241

• decides leadership

South Dakota State University

South Dakota State University as a Land-Grant institution serving South Dakota and the region has been a major contributor to the culture and education of the North Central area.

An act of the Territorial Legislature, approved February 21, 1881, provided for the establishment of "an Agricultural College for the Territory of Dakota at Brookings." The Legislature of 1883 provided for the erection of the first building which was known as Central and was opened for use September 24, 1884.

From that meager beginning the University has grown to a point where today it owns 1,580 acres in the Brookings area and 4,591 acres when substations and Camp Lakodia are included. Approximate value of the physical plant and equipment is \$35-million.

The picturesque campus is landscaped with a wide variety of trees and shrubs.

Adjoining it to the east are the horticulture gardens and to the north, north-east and northwest the college farms.

Central along with Old North, which was built in 1887, were razed in 1961 and 1962 to make room for Shepard Hall which is to be completed this fall. The modern brick three-story structure will house a library, classrooms and labs for the departments of Chemistry and Pharmaceutical Chemistry.

Degrees offered are classified and grouped under six colleges— Agriculture, Engineering, Home Economics, Nursing, Pharmacy, Science and Applied Arts. Graduate studies are offered and advanced degrees awarded.

SDSU is a charter member of the North Central Intercollegiate Athletic Conference joining in 1921. League titles are settled in football, basketball, baseball, cross country, indoor and outdoor track, wrestling, golf and tennis.

JACKRABBIT PLAYERS' NICKNAMES

Here are some of the not so obvious nicknames that have been hung on 1964 Jackrabbit players:

"Butch"-----	LeRoy Benson	"Chief"-----	Jim Kominek
"Stub"-----	Lyle Farrand	"Frenchie"----	Tom Loquai
"Tube"-----	Lyle Farrand	"Marty"-----	Daryl Martin
"Spin"-----	Dave Fennig	"Bods"-----	Gary Neuharth
"Ozark"-----	Fred Holloway	"Bomber"-----	Vic Pepka
"Dugie"-----	Fred Holloway	"Mr. Magoo"---	Mike Sheahan
"Baby Huey"---	Dick Hughes	"Twitch"-----	Terry Sorensen
"Killer"-----	Dean Johnson		

NCC records

TEAM

Scoring: Best game ave. season—41.2 pts., SDS, 1954.

Total Offense: Best game ave. season—421.2 yds., SDS, 1961.

Rushing: Highest game ave. season—358.7 yds., SDS, 1951.

Passing: Best game ave. season—217.2 yds., SCI, 1954.

Total Defense: Smallest ave. yield season—176.3 yds., SDS, 1955.

Rushing Defense: Smallest ave. yield season—99.8 yds., SDS, 1951.

Passing Defense: Smallest ave. yield season—26.8 yds., NDSU, 1953.

Victories: Most for season—6, USD, 1951; SCI, 1960; SDS, 1963 (all 6-0-0).

INDIVIDUAL

Scoring: Most points season—72, Warren Williamson, SDS, 1950.

Total Offense: Most yds. season—1,254, Ralph Capitani, SCI, 1953.

Rushing: Most net yds. game—253, Randy Schultz, SCI, vs. SDS, 1963.

Most net yds. season—757, Dan Boals, SCI, 1962.

Passing: Most net yds. season—1,023, Ralph Capitani, SCI, 1954 (Comp. 55).

Most completions season—81, Jim Luce, Aug., 1960 (958 yds.).

Most TD passes season—14, Ron Meyer, SDS, 1963.

Receiving: Most yds. gained season—663, Dick Beetsch, SCI, 1954 (34 catches).

Most catches season—38, John Simko, Aug., 1960 (440 yds.)

Punting: Best ave. season (over 10 kicks)—43.6 yds., Wayne Ailts, USD, 1956.

Kick Returns: Most yds. season (punt, kickoff)—439, Dick Ryan, UND, 1954.



1964 Freshman Schedule

Oct. 1—at Augustana (7:30)

Oct. 16—Morningside (2:00)

Oct. 22—at South Dakota (7:30)

Oct. 30—North Dakota State (2:00)

1963 Freshman Results

Oct. 11—South Dakota State 29, Augustana 6

Oct. 17—South Dakota State 17, Morningside 26

Oct. 25—South Dakota State 0, South Dakota 21

Nov. 1—South Dakota State 0, North Dakota State 21
(Won 1; Lost 3; TP 46; OP 74)

SOUTH DAKOTA STATE UNIVERSITY **football records**

RUSHING—Individual

Most times carried 1 game—30 by Joe Thorne vs State College of Iowa, 1961

Most times carried 1 season—174 by Joe Thorne, 1961

Most yards net gain 1 game—200 by Joe Thorne vs Morningside, 1961

Most yards net gain 1 season—1016 by Pete Retzlaff, 1951

Most yards net gain 2 seasons—2024 by Pete Retzlaff, 1951-52

Best average for 1 season—112 yards per game by Pete Retzlaff, 1952

RUSHING—Team

Most times carried 1 game—84 vs Augustana, 1952

Most times carried 1 season—624 in 1951

Most yards net gain 1 game—532 vs Augustana, 1951

Most yards net gain 1 season—3685 in 1951

PASSING—Individual

Most passes attempted 1 game—35 by Dean Koster vs SCI, 1962

Most passes attempted 1 season—129 by Dean Koster, 1962

Most passes completed 1 game—23 by Ron Meyer vs. Arkansas State, 1963

Most passes completed 1 season—77 (of 122) by Ron Meyer, 1963.

Most passes had intercepted 1 game—3 by Herb Bartling vs North Dakota U., 1950;

Virg Riley vs Iowa Teachers, 1952; Phil Edwards vs St. John's, 1953; Jerry

Welch vs Marquette, 1953; Nig Johnson vs Montana State, 1956; John Meek vs

South Dakota U, 1958; Ron Meyer vs North Dakota State U., 1963.

Most passes had intercepted 1 season—10 by Nig Johnson, 1956

Most net pass yards 1 game—289 by Ron Meyer vs Arkansas State, 1963.

Most pass yards 1 season—1147 by Dean Koster, 1961

Most touchdown passes 1 game—4 by Herb Bartling vs North Dakota State, 1949;

Ron Meyer vs North Dakota State, 1963

Most touchdown passes 1 season—19 by Ron Meyer, 1963

PASSING—Team

Most passes attempted 1 game—36 vs SCI, 1962

Most passes attempted 1 season—173 in 1963

Most passes completed 1 game—23 vs Arkansas State, 1963

Most passes completed 1 season—96 in 1963

Most passes had intercepted 1 game—4 by Iowa Teachers, 1952; St. John's 1953;

Arizona, 1956; Montana State, 1958

Most passes had intercepted 1 season—17 in 1956

Most net pass yards 1 game—289 vs Arkansas State, 1963

Most net pass yards 1 season—1325 in 1963

Most touchdown passes 1 game—5 vs North Dakota U., 1957; U. of South Dakota, 1963

Most touchdown passes 1 season—23 in 1963

RECEIVING

- Most passes caught 1 game—11 by Wayne Rasmussen vs Arkansas State, 1963
- Most passes caught 1 season—29 by Wayne Rasmussen, 1963
- Most pass yards 1 game—171 by Dal Eisenbraun vs Iowa Teachers, 1956
- Most pass yards 1 season—470 by Roger Eischens, 1961
- Most touchdown passes caught 1 game—4 by Don Bartlett vs N. D. State, 1949
- Most touchdown passes caught 1 season—7 by Wayne Rasmussen, 1963
- Longest scoring pass—80 yds., Nig Johnson to Dal Eisenbraun vs Iowa Teachers, 1956

TOTAL OFFENSE—Individual

- Most attempts 1 game—43 by Ron Meyer vs Arkansas State, 1963
- Most attempts 1 season—191 by Ron LaVallee, 1957
- Most yards 1 game—316 by Ron Meyer vs Arkansas State, 1963
- Most yards 1 season—1175 by Dean Koster, 1961
- Most yards 4 seasons—2639 by Jerry Welch, 1951-54

TOTAL OFFENSE—Team

- Most yards 1 game—638 vs Bemidji Teachers, 1951
- Most yards 1 season—4,377 in 1951
- Number of plays run 1 game—99 vs Augustana, 1952
- Number of plays run 1 season—733 in 1951

SCORING—Individual

- Most scoring 1 game—24 by Don Bartlett vs North Dakota State, 1949; Pete Retzlaff vs St. Cloud Teachers, 1952
- Most scoring 1 season—84 by Warren Williamson, 1950
- Most scoring 4 seasons—221 by Jerry Welch, 1951-54

SCORING—TEAM

- Most scoring 1 game—85 vs Columbus, 1922
- Most scoring 1 season—381 in 1950
- Largest margin of victory—85-0 vs Columbus, 1922

MISCELLANEOUS

- Longest sustained Drive—99 yds. 2' 6" vs South Dakota U., 1955
- Longest scoring scrimmage run—91 yards by Jerry Welch vs St. Thomas, 1954
- Longest scoring kickoff runback—95 yards by Jerry Welch vs Iowa State, 1952
- Longest scoring punt runback—77 yards by Jerry Welch vs North Dakota U., 1954
- Longest scoring pass interception—84 yards by Roger Eischens vs Toledo, 1962
- Longest punt—68 yards by Bob Bresee vs South Dakota U., 1951
- Most yards kickoff returns 1 game—258 by Jerry Welch vs Iowa State, 1952
- Most yards kickoff and punt returns 1 season—601 by Gary Boner, 1962
- Most conversions 1 season—36 by George Medchill, 1950; Dick Craddock, 1951
- Best conversion percentage—.878 (36 of 41) by Dick Craddock, 1951
- Most games won 1 season—9 in 1928, 1950, 1963
- Most punts blocked 1 season—5 in 1957
- Most field goals kicked one season—9 by John Stone, 1962

all-time football record

Year	Coach	Record	TP	OP
1889	(Unavailable)	0-0-1	6	6
1897	(Unavailable)	0-1-0	0	22
1898	(Unavailable)	1-1-1	68	11
1899	(Unavailable)	3-1-0	90	62
1900	(Unavailable)	4-1-0	128	23
1901	Mr. Morrison	3-2-0	102	44
1902	L. L. Gilkey	3-2-0	67	21
1903	(Unavailable)	1-2-0	28	95
1904	J. Harris Werner	4-2-1	90	27
1905	Wm. M. Blaine	2-3-0	74	122
1906	Wm. Juneau	3-1-0	52	34
1907	Wm. Juneau	5-2-0	108	42
1908	Wm. Juneau	3-3-1	56	61
1909	J. M. Saunderson	1-3-0	61	28
1910	J. M. Saunderson	4-2-2	76	64
1911	Frederick Johnson	4-4-0	60	89
1912	Harry "Buck" Ewing	2-3-1	46	136
1913	Harry "Buck" Ewing	5-3-0	147	82
1914	Harry "Buck" Ewing	5-2-0	93	60
1915	Harry "Buck" Ewing	5-1-1	163	7
1916	Harry "Buck" Ewing	4-2-0	100	76
1917	Harry "Buck" Ewing	5-1-0	149	84
1918	No Games — World War I			
1919	C. A. "Jack" West	4-1-1	78	20
1920	C. A. "Jack" West	4-2-1	66	27
1921	C. A. "Jack" West	7-1-0	255	38
1922	C. A. "Jack" West	5-2-1	202	57
1923	C. A. "Jack" West	3-4-0	121	85
1924	C. A. "Jack" West	6-1-0	91	28
1925	C. A. "Jack" West	2-3-2	20	45
1926	C. A. "Jack" West	8-0-3	157	24
1927	C. A. "Jack" West	5-3-1	189	89
1928	T C "Cy" Kasper	9-1-0	230	25
1929	T C "Cy" Kasper	5-4-1	237	55
1930	T C "Cy" Kasper	2-6-1	48	197
1931	T C "Cy" Kasper	6-3-0	194	78
1932	T C "Cy" Kasper	2-5-1	70	96
1933	T C "Cy" Kasper	6-3-0	118	73
1934	R. H. "Red" Threlfall	6-4-0	189	72
1935	R. H. "Red" Threlfall	4-4-1	123	92
1936	R. H. "Red" Threlfall	3-6-1	51	116
1937	R. H. "Red" Threlfall	4-5-0	102	147

Year	Coach	Record	TP	OP
1938	Jack Barnes	3-5-0	69	109
1939	Jack Barnes	7-2-0	141	95
1940	Jack Barnes	4-3-1	78	57
1941	Thurlo McCrady	2-5-0	32	131
1942	Thurlo McCrady	4-4-0	65	92
1943	No Games -- World War II			
1944	Thurlo McCrady	1-1-0	13	27
1945	Thurlo McCrady	1-4-1	51	144
1946	Thurlo McCrady	3-3-2	131	76
1947	Ralph Ginn	4-5-0	123	211
1948	Ralph Ginn	4-6-0	107	203
1949	Ralph Ginn	7-3-0	183	175
1950	Ralph Ginn	9-0-1	381	116
1951	Ralph Ginn	8-1-1	311	105
1952	Ralph Ginn	4-4-1	287	230
1953	Ralph Ginn	5-3-1	247	186
1954	Ralph Ginn	7-2-0	338	151
1955	Ralph Ginn	6-2-1	197	114
1956	Ralph Ginn	4-5-0	137	212
1957	Ralph Ginn	6-2-1	185	119
1958	Ralph Ginn	4-5-0	123	158
1959	Ralph Ginn	2-7-0	80	153
1960	Ralph Ginn	5-4-1	170	135
1961	Ralph Ginn	8-2-0	376	97
1962	Ralph Ginn	7-2-1	238	70
1963	Ralph Ginn	9-1-0	278	166
	Totals	282-181-34	8646	5892

coaches' records

Coach, Seasons	Years	W	L	T	Pct.
Mr. Morrison, 1901	1	3	2	0	.600
L. L. Gilkey, 1902	1	3	2	0	.600
J. Harrison Werner, 1904	1	4	2	1	.643
William M. Blaine, 1905	1	2	3	0	.400
William Juneau, 1906-08	3	11	6	1	.639
J. M. Saunderson, 1909-10	2	5	5	2	.500
Frederick Johnson, 1911	1	4	4	0	.500
Harry "Buck" Ewing, 1912-17	6	26	12	2	.675
C. A. "Jack" West, 1919-27	9	44	17	9	.693
T. C. "Cy" Kasper, 1928-33	6	30	22	3	.573
R. H. "Red" Threlfall, 1934-37	4	17	19	2	.474
Jack Barnes, 1938-40	3	14	10	1	.580
Thurlo McCrady, 1941-46	5	11	17	3	.403
Ralph Ginn, 1947-63	17	99	54	8	.640

all-time record with opponents (1889-1963)

Opponents	GP	W	L	T	Opponents	GP	W	L	T
Arizona	1	0	1	0	Michigan State	1	0	1	0
Arkansas State	2	1	1	0	Minnesota	6	0	6	0
Augustana	19	16	3	0	Minnesota 'B'	1	0	1	0
Bemidji State	4	3	1	0	Minot Teachers	1	0	1	0
Bradley U.	1	0	1	0	Montana State	8	2	6	0
Buena Vista	3	2	1	0	Moorhead State	3	3	0	0
Carleton	4	2	2	0	Morningside	38	26	8	4
Catholic U.	1	0	1	0	Nebraska	1	0	1	0
Central (Ia.)	1	1	0	0	Nebraska Wesleyan	1	0	0	1
Cincinnati	1	0	1	0	North Dakota	43	19	20	4
Colorado St. College	7	6	1	0	North Dakota State	50	31	14	5
Columbus College	4	2	0	2	Northern (S.D.)	12	12	0	0
Concordia	2	0	1	1	Northwest Missouri	1	1	0	0
Creighton	10	6	3	1	Oklahoma City U.	1	0	1	0
Dakota Wesleyan	23	12	9	2	Omaha U.	7	5	1	1
DePaul U.	2	0	2	0	Pipestone (City)	1	1	0	0
Des Moines U.	1	1	0	0	Pipestone High	1	1	0	0
Detroit U.	2	1	1	0	S. D. State Army	1	1	0	0
Drake U.	5	1	4	0	Sioux Falls (City)	2	0	2	0
Duquesne	1	0	1	0	Sioux Falls High	1	1	0	0
Emporia (Kan.) St.	1	1	0	0	South Dakota Mines	8	5	2	1
Flandreau	5	5	0	0	South Dakota	55	22	27	6
Flandreau Indians	4	3	1	0	Southern (S.D.)	2	2	0	0
General Beadle	4	3	0	1	St. Cloud	6	5	1	0
Gustavus Adolphus	2	2	0	0	St. John's	1	0	1	0
Hamline U.	5	4	1	0	St. Louis U.	2	1	1	0
Hawaii U.	1	1	0	0	St. Norbert	2	1	1	0
Huron College	25	22	3	0	St. Olaf	4	3	1	0
Iowa State	2	0	2	0	St. Regis	1	1	0	0
Iowa St. College of	24	12	10	2	St. Thomas	5	3	2	0
Kansas State	2	0	2	0	Toland's	1	1	0	0
Kansas U.	1	0	1	0	Toledo	2	1	1	0
LaCrosse State	3	2	1	0	Trinity	1	1	0	0
Loras	3	0	3	0	Watertown	1	1	0	0
Loyola	2	0	1	1	Wayne (Mich.)	1	1	0	0
Luther	1	1	0	0	*Western Union	2	2	0	0
Macalester	2	1	0	1	West Texas State	1	0	1	0
Madison High	1	1	0	0	Wichita	5	1	4	0
Manitoba U.	1	1	0	0	Wisconsin	9	1	8	0
Mankato State	3	3	0	0	Yankton College	14	9	4	1
Marquette	5	0	5	0	Youngstown	1	0	1	0
Michigan Normal	2	1	1	0					

* Now known as Westmar

hobo day results

(Won 31; Lost 14; Tied 5)

Year	Score	Opponent	Result
1912	-- 6	Yankton	3
1913	--36	School of Mines	0
1914	--14	North Dakota	3
1915	-- 0	South Dakota	7
1916	--14	North Dakota	7
1917	--21	North Dakota State	14
1918	--No	Game---WW I	
1919	-- 9	North Dakota	7
1920	--14	Hamline	0
1921	--27	North Dakota	14
1922	-- 7	South Dakota	7 (tie)
1923	--27	Creighton	20
1924	--10	South Dakota	3
1925	-- 0	Creighton	19
1926	-- 0	South Dakota	0 (tie)
1927	--44	Morningside	7
1928	--13	South Dakota	0
1929	-- 6	North Dakota	7
1930	--13	South Dakota	6
1931	-- 6	North Dakota	34
1932	-- 0	South Dakota	0 (tie)
1933	--18	North Dakota	2
1934	--19	South Dakota	0
1935	-- 6	North Dakota	6 (tie)
1936	-- 0	South Dakota	6
1937	--20	Wichita	6
1938	-- 0	South Dakota	7
1939	--14	North Dakota	13
1940	-- 0	South Dakota	26
1941	--15	North Dakota	33
1942	-- 0	South Dakota	7
1943	--	(Two Army Special Training Teams played 6-6 tie)	
1944	-- 6	SDS ERC (Army)	0
1945	--25	Hamline	0
1946	--26	Augustana	6
1947	-- 7	South Dakota	26
1948	--20	Augustana	6
1949	--27	South Dakota	25
1950	--21	North Dakota	21 (tie)
1951	-- 6	South Dakota	26
1952	--60	North Dakota	6
1953	--13	St. John's (Minn.)	26
1954	--34	North Dakota	20
1955	--27	South Dakota	7
1956	--14	North Dakota	13
1957	--21	South Dakota	13
1958	--12	North Dakota	30
1959	--12	South Dakota	7
1960	--23	North Dakota	27
1961	--34	South Dakota	6
1962	--26	North Dakota	0
1963	--61	South Dakota	0

Scoring totals -- SDS 834 Opp. 529

BIRTHDAYS IN SEASON . . .

These Jackrabbits will have birthdays during the 1964 season:

Sept. 18	Pat Durkin, 19th	Oct. 4	Mike Roach, 21st
Sept. 22	LeRoy Benson, 20th	Oct. 25	Howard Hesby, 21st
Sept. 23	Dale Wittler, 20th	Oct. 27	Lyle Farrand, 21st
Nov. 10	Daryl Martin, 22nd		

TEN BIGGEST JACKRABBIT SCORES

(Against Collegiate Foes)

1922	Columbus College	85-0
1961	St. Cloud State	73-0
1915	Yankton College	72-0
1929	*Western Union	72-0
1954	Augustana College	68-0
1927	Huron College	67-0
1954	Mankato State	66-0
1917	Gustavus Adolphus	64-0
1928	Dakota Wesleyan	63-0
1946	Manitoba U.	61-0
1963	South Dakota U.	61-0

*Now known as Westmar College

Worst Jackrabbit Defeats

1947	Kansas U.	6-86
1903	North Dakota State	0-85
1905	Minnesota U.	0-81
1912	South Dakota U.	7-73
1917	Minnesota U.	0-64
1956	Arizona U.	0-60
1945	State College of Iowa	7-58
1930	Wisconsin U.	7-58
1963	Nebraska U.	7-58
1899	Dakota Wesleyan	0-57
1952	Iowa State U.	19-57

MOST COMBINED POINTS

92	Kansas U. (6-86)	1947
85	North Dakota State (0-85)	1903
85	Columbus College (85-0)	1922
82	South Dakota U. (54-28)	1950
81	Minnesota U. (0-81)	1905
81	State College of Iowa (34-47)	1952
80	South Dakota U. (7-73)	1912
76	Iowa State U. (19-57)	1952
74	North Dakota (53-21)	1957
73	Morningside (34-39)	1954
73	St. Cloud State (73-0)	1961



NORTH CENTRAL CONFERENCE

School	Enrollment*	Location	Population
South Dakota State U.	4,000	Brookings, S. D.	11,400
Augustana	1,600	Sioux Falls, S. D.	65,466
U. of South Dakota	3,000	Vermillion, S. D.	6,102
North Dakota State U.	4,250	Fargo, N. D.	48,500
U. of North Dakota	5,600	Grand Forks, N. D.	36,000
State College of Iowa	5,100	Cedar Falls, Ia.	21,195
Morningside	1,250	Sioux City, Iowa	89,159

* Estimated

**SDS PRESS, RADIO AND TV OUTLETS
BROOKINGS
NEWSPAPERS**

Marv Ness
News Editor
Brookings Register

Jerry Mashek
Sports Editor
South Dakota Collegian

Gene Platek
Sports Director
KBRK, Brookings

RADIO
Sports Director
KAGY
University Station

IMMEDIATE AREA

WIRE SERVICES

Harl Andersen
Associated Press
Bureau Manager
Sioux Falls, S. D.

Ron Larsen
United Press Internaional
Bureau Manager
Sioux Falls, S. D.

NEWSPAPERS

John Egan
Sports Editor
Argus-Leader
Sioux Falls, S. D.

Ken Schaack
Sports Editor
Public Opinion
Watertown, S. D.

Dick Wood
Sports Editor
Daily Plainsman
Huron, S. D.

Don Linder
Sports Editor
Journal
Rapid City, S. D.

Larry Desautels
Sports Editor
American-News
Aberdeen, S. D.

Jim Wilson
Sports Editor
Republic
Mitchell, S. D.

RADIO-TV

Jim Burt
Sports Director
KELO-TV
Sioux Falls, S. D.

Danny Olson
Sports Director
KSOO-TV
Sioux Falls, S. D.

**REGIONAL
NEWSPAPERS**

Clyde Schubert
NCC Writer
Minneapolis Tribune
Minneapolis, Minn.

Alex Stoddard
Sports Editor
The Journal
Sioux City, Iowa

STADIUM DRESSING ROOM FACILITIES READY

New dressing room facilities will be used by the Jackrabbits and their football opponents for the first time this fall. The one-story cement block structure is located south of Coughlin-Alumni Stadium within the fence enclosed stadium complex. The building, which measures 46 by 106 feet, was financed by Stadium-for-State funds contributed by students, alumni and friends of South Dakota State. Facilities include two team dressing rooms with showers and toilets, an equipment room, training room and room for officials and coaches also equipped with showers. Waltz Construction Co. of Brookings got the \$54,885 contract.

SDSU scores of last decade

1954 (W-7; L-2)

Iowa State	6	34
St. Thomas	19	6
Mankato Teachers	66	
Augustana	68	0
North Dakota State	50	13
North Dakota U.	34	20
South Dakota U.	20	19
Morningside	34	39
Iowa Teachers	41	20
	338	151

1955 (W-6; L-2; T-1)

St. Thomas	13	19
Iowa Teachers	34	21
North Dakota U.	14	6
Augustana	28	0
Wichita U.	7	33
North Dakota State	33	7
South Dakota U.	27	7
Morningside	21	-21
LaCrosse State	20	0
	197	114

1956 (W-4; L-5)

Montana State	14	33
Northwest Missouri	7	0
Arizona U.	0	60
Augustana	20	21
North Dakota U.	14	13
South Dakota U.	14	19
North Dakota State	9	26
Morningside	28	13
Iowa Teachers	31	27
	137	212

1957 (W-6; L-2; T-1)

Montana State	6	13
Iowa Teachers	23	20
Drake	7	25
Augustana	16	0
North Dakota U.	53	21
South Dakota U.	21	13
North Dakota State	32	14

Morningside	7	7
Mankato State	20	6
	185	119

1958 (W-4; L-5)

Drake	12	6
Marquette	7	18
Montana State	6	23
Augustana	20	6
North Dakota U.	12	30
South Dakota U.	7	28
North Dakota State	20	33
Morningside	26	6
Iowa Teachers	13	8
	123	158

1959 (W-2; L-7)

Montana State	0	27
Colorado State	0	22
Kansas State	12	28
Augustana	0	13
North Dakota U.	6	0
South Dakota U.	12	7
North Dakoth State	6	8
Morningside	32	34
Iowa Teachers	12	14
	80	153

1960 (W-5; L-4; T-1)

Bemidji State	22	6
Kansas State	6	20
Montana State	20	14
Augustana	20	21
North Dakota U.	23	27
South Dakota U.	28	7
North Dakota State	14	14
Morningside	22	0
Iowa Teachers	0	12
Colorado State	15	14
	170	135

1961 (W-8; L-2)

Bemidji State	34	8
Colorado State	36	13
St. Cloud State	73	0
Montana State	12	17
Augustana	41	14
North Dakota U.	13	14
South Dakota U.	34	6

N. D. State U.	41	12
Morningside	56	1
State College of Iowa	36	13
	376	97

1962 (W-7; L-2; T-1)

U of Toledo	25	1
Arkansas State Col.	7	
Montana State Col.	10	
Augustana College	28	
U of North Dakota	26	
U of South Dakota	24	
N. D. State U.	17	
State College of Iowa	13	
Morningside College	41	
Colo. State College	47	
	238	71

1963 (W-9; L-1)

Montana State	9	
Nebraska	7	51
Colorado State	54	11
Augustana	28	
U. of North Dakota	7	
U. of South Dakota	61	
N. D. State U.	40	28
State College of Iowa	27	11
Morningside College	28	22
Arkansas State	17	11
	278	166

All-time Record

	W	L	T	Pts.	Op.
	282	181	34	8646	588



TICKET INFORMATION

RESERVED SEAT SEASON TICKET

Five Games \$12.00

SINGLE GAME

(Except Hobo Day)

Reserved seat \$2.50

General Admission, Adults \$2.00

High School Students \$1.00

Grade School Students \$.50

(When Accompanied by an Adult)

HOBO DAY (U. OF NORTH DAKOTA)

Reserved Seat \$3.50

For tickets, write Athletic Ticket Office
Gymnasium, Phone 692-6111, Ext. 420

South Dakota State University

University Station, Brookings, South Dakota

1964 CROSS COUNTRY SCHEDULE

Sept. 19 Intrasquad at Brookings.

Sept. 26 All Comers Invitational at Brookings.

Oct. 3 Gypsy Days Meet at Aberdeen.

Oct. 9 Mankato State at Mankato, Minn.

Oct. 17 South Dakota at Vermillion.

Oct. 24 Minnesota at Brookings.

Oct. 31 Augustana at Sioux Falls.

Nov. 7 NCC at Sioux Falls.

Nov. 14 NCAA Championship, Wheaton, Ill.



	MONTANA STATE	FRESNO STATE	AUGUSTAN	NDSU	U of ND	U of SD	MORNINGSIDE	SCI	DRAKE	MANKATO STATE
SEPT. 12	SDSU at BROOKINGS		Gustavus Adolphus at St. Peter	Moorhead State at Fargo	St. Thomas at Grand Forks	Bemidji State at Bemidji	Macalester at St. Paul	Northern Michigan at Cedar Falls		
SEPT. 19	Wichita at Wichita	SDSU at FRESNO	Augsburg at Sioux Falls	Morningside at Fargo	Bemidji State at Bemidji	Nebraska at Lincoln	NDSU at Fargo	Mankato State at Mankato	Iowa State at Ames	SCI at Mankato
SEPT. 26	Fresno State at Bozeman	Montana State at Bozeman	SDSU at BROOKINGS	SCI at Cedar Falls	Morningside at Sioux City	Drake U. at Vermillion	U of ND at Sioux City	NDSU at Cedar Falls	U of SD at Vermillion	St. Cloud State at Mankato
OCT. 3	San Jose State at Bozeman	Hawaii at Fresno	U of SD at Sioux Falls	SDSU at Fargo	SCI at Grand Forks	Augustana at Sioux Falls	Omaha U at Sioux City	U of ND at Grand Forks	Western Illinois at Des Moines	Moorhead State at Moorhead
OCT. 10	Nevada at Bozeman	Idaho State at Pocatello	NDSU at Fargo	Augustana at Fargo	SDSU at BROOKINGS	Morningside at Sioux City	U of SD at Sioux City	Drake U. at Cedar Falls	SCI at Cedar Falls	Bemidji State at Mankato
OCT. 17	Idaho State at Bozeman	Cal Poly(SLO) at Fresno	Youngstown U. (Ohio) at Sioux Falls	U of ND at Grand Forks	NDSU at Grand Forks	SDSU at VERMILLION	SCI at Cedar Falls	Morningside at Cedar Falls	Southern Illinois at Des Moines	Michigan Tech at Houghton
OCT. 24	NDSU at Fargo	Cal State(LA) at Los Angeles	SCI at Sioux Falls	Montana State at Fargo	U of SD at Grand Forks	U of ND at Grand Forks	SDSU at BROOKINGS	Augustana at Sioux Falls	Omaha U at Omaha	Winona State at Mankato
OCT. 31	U of ND at Grand Forks	San Diego State at San Diego	Morningside at Sioux City	U of SD at Vermillion	Montana State at Grand Forks	NDSU at Vermillion	Augustana at Sioux City	SDSU at CEDAR FALLS	Bradley U. at Des Moines	Illinois State at Normal
NOV. 7	Montana at Missoula	Cal State (Long Beach) at Fresno	U of ND at Sioux Falls	Idaho State at Pocatello	Augustana at Sioux Falls	SCI at Vermillion	Moorhead State at Sioux City	U of SD at Vermillion	SDSU at DES MOINES	Northern Michigan at Marquette
NOV. 14	Weber State at Ogden	U. of Pacific at Fresno		Wisconsin (Milwaukee Br.) at Milwaukee				Northern Illinois at De Kalb	Abilene Christian at Des Moines	SDSU at BROOKINGS
NOV. 21		San Jose State at San Jose							Louisville at Louisville	