

South Dakota State University

**Open PRAIRIE: Open Public Research Access Institutional
Repository and Information Exchange**

South Dakota Art Museum Newsletters and Publications

Winter 1992

South Dakota Art Museum News, Winter 1991-92

South Dakota Art Museum

Follow this and additional works at: https://openprairie.sdstate.edu/sdam_news

SOUTH DAKOTA ART MUSEUM NEWS

Volume 22, Number 3, Winter 1991-92

SDSU LIBRARY - BROOKINGS, SD



3 1574 50248 1952



Mark McGinnis with "Pizarro" and "Cortes" from *The Wonderful World of Explorers*

FEB 27 1996
LIBRARY

SPECIAL EXHIBITIONS

The American Collection, December 15 - January 26, features work by 19 artists, including Lucy Scott Bower (1864-1934), an Iowan who lived in Paris and was included in such prestigious exhibitions there as the Salon d'Automn. Her "Canal Street, LaRochele," painted about 1917, reflects the Fauve tradition in its expressive brushwork and color. Robert Mangold of New York, a key figure in the Minimalist movement, is represented by one of his first and most evocative Minimalist paintings, "Warm Grey Area" of 1966, and Brian Paulsen of Grand Forks, North Dakota, a painter who makes us believe that rubber ducks use the freeways of Los Angeles, is represented by one of his finest

miniature fantasies, "Plywood Panet" of 1975.

The Wonderful World of Explorers, February 2 - 23, is the work of Mark McGinnis of Aberdeen, South Dakota. With his painted maps, larger-than-life portraits of Christopher Columbus, Amerigo Vespucci, Vasco Balboa, Hernando Cortes, Francisco Pizarro, and Bartolome de Las Casas, and self-portraits as a fifth, eighth, and eleventh-grade student, McGinnis explains the Spanish conquest of the New World as he learned about it in school, and as it most likely occurred. A members' preview begins at 4:00 p.m. Saturday, February 1, with an "illustrated lecture" by McGinnis.

With the Media/Against the Media, March 1 - 29, was curated by Marta

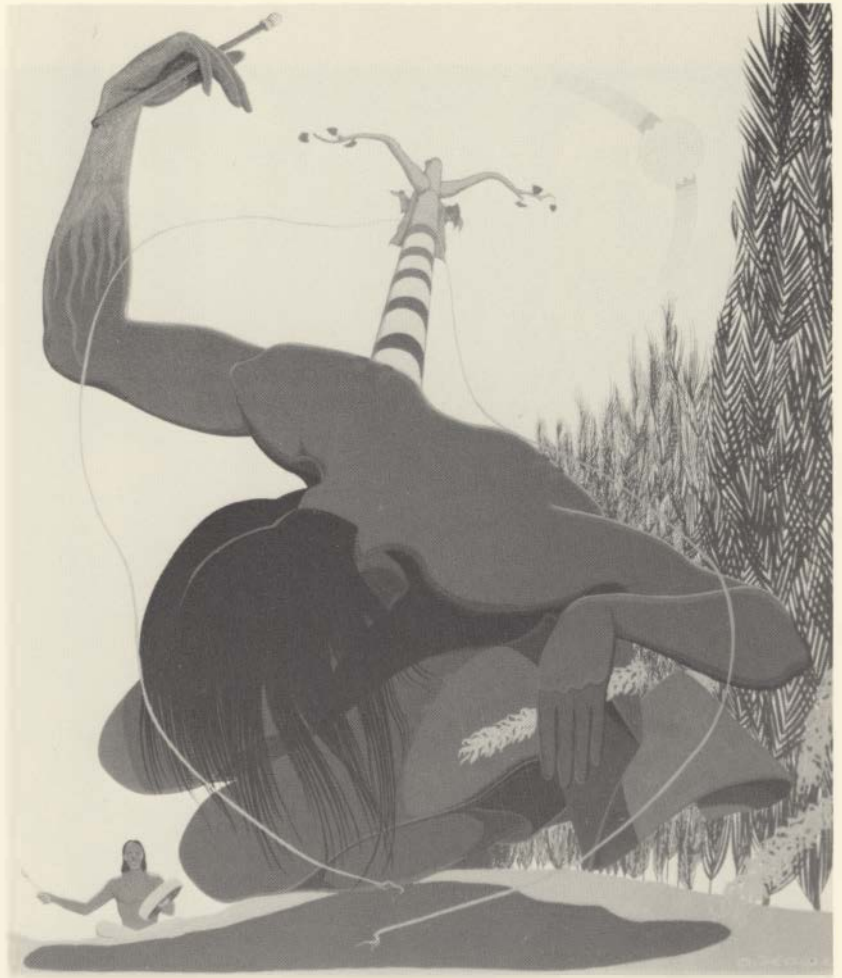
Gili in Barcelona, organized for tour by Curatorial Assistance in Pasadena, and includes 39 works by Terry Braunstein, Jack Butler, Robert Heinecken, and Joyce Neimanas, all of Los Angeles. These artists share an interest in images from television, movies, magazines, and newspapers, which they appropriate and reconstruct to expose the deeper intentions and meanings in those images. A members' preview begins at 4:00 p.m. Saturday, February 29, with an introduction by Mary Perpich of the SDSU Journalism Department.

Ongoing exhibitions from the Museum collections are "Harvey Dunn Paintings," "Oscar Howe Paintings," "Marghab Linens," "Native American Art," and "South Dakota Artists."

705
S0882
V22 #3

MUSEUM GIVEN OSCAR HOWE PAINTING

Gene and JoAnn Cheever of Spearfish, South Dakota, have given Oscar Howe's casein on paper painting from the early 1950s, "Sioux Sun Dancer," to the Museum. Howe (1915-83), a Dakota Indian of South Dakota, studied at the Santa Fe Indian School's famous "Studio" during the 1930s, and is considered to be one of its most distinguished graduates. His work in the Santa Fe style reached its zenith in the early 1950s, when he became as concerned with the expressive qualities of color and spatial organization as with narrative. The Museum now has 23 works by Howe.



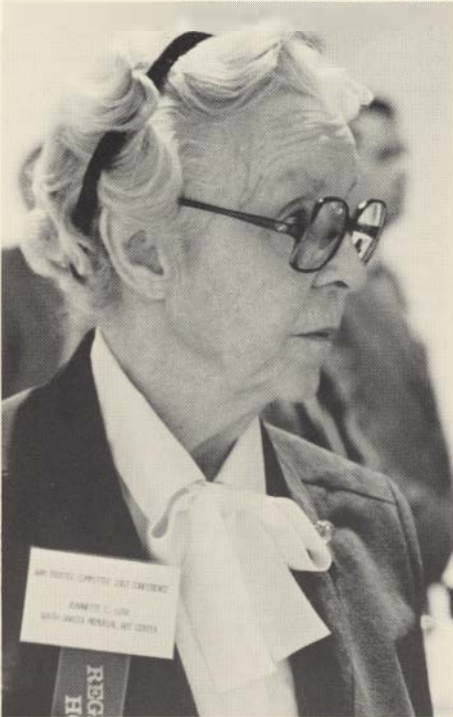
Oscar Howe's "Sioux Sun Dancer"

MARGHAB COLLECTION WINS RECOGNITION

The Museum's 1,800-piece **Marghab collection** of hand-embroidered linens from Madeira was featured as a "Travel Treasure" in the September-October issue of *Home & Away*, the magazine of the Midwest American Automobile Association, and has been given a Five-Star rating by the Association. The spectacular "Prince of Wales" cloth was illustrated in the article. Designed for the man who became Edward VIII of England, it is embroidered with the coats of arms of Portugal, the concelhos or counties of Madeira, and the nearby island of Porto Santo. The Marghab enterprise was founded on Madeira in 1934 by Vera Way Marghab of Watertown, South Dakota, and her husband Emile.



Marghab Gallery



LUSK CONTRIBUTES TO MUSEUM ENDOWMENT

Jeannette Lusk of Huron, first president and life member of the Museum Board of trustees, contributed \$1,000 to the Museum Operational Endowment, a fund that she was instrumental in starting in 1981 and that now has a balance of \$107,879. When developed, the endowment's earnings will help pay for increased operating expenses as the Museum expands its programs and services. Other Museum endowments being developed are for art acquisitions and maintenance of the collections.

Jeannette Lusk



Norman Gambill

MUSEUM FILM SERIES

Programs begin at 7:30 p.m. with an introduction by Norman Gambill, art historian and head of the SDSU Department of Visual Arts, and are free to the public.

January 23. "Camille Claudel," 1988, directed by Bruno Nuytten, is about the life and work of French sculptor Camille Claudel, who deserves better than to be only remembered as the lover of Gustave Rodin. French with English subtitles.

February 20. "Landscape in the Mist," 1988, directed by Theo Angelopoulos. This odyssey of two wise, sad children in search of their father won the Felix Award for best European film of the year. Greek with English subtitles.

March 19. "Citizen Kane," 1941, directed by Orson Welles, is considered to be one of the greatest films of all time. Welles plays Charles Foster Kane, a character based on publisher and political aspirant William Randolph Hearst.

MARCEL EARNS MASTER'S DEGREE

Francine Marcel, Museum exhibitions curator since January 1991, successfully defended her thesis on museum collection management policies at Syracuse University in August and received a Master of Fine Arts in museum studies in December. A native of Richelieu, Quebec, she holds a Bachelor of Arts in art history, cum laude, from the State University of New York in Plattsburgh, and a Bachelor of Fine Arts with honors in photography from the School of Visual Arts in New York City.

MUSEUM RECEIVES ARTS COUNCIL SUPPORT

The South Dakota Arts Council, a state agency with funds from the State Legislature and National Endowment for the Arts, has awarded a \$14,340 General Operating Support Grant to the Museum. The funds will be used to support Museum special exhibitions, touring exhibitions for other communities in the state, films, and lectures during the 1991-92 season. 76,330 people benefitted from these programs last year, including people from 47 states and 28 foreign countries.

GUILD MEMBERS COMPLETE DOCENT TRAINING

Twelve members of the Museum Guild participated in the Fall Docent Training Program, passed the examination, and increased their docent rank (rank is based on the number of successfully completed training programs): Phyllis Bartling (XII), Margy Chamberlin (III), Mildred Gastler (III), Naomi Gilkerson (XI), Seham Hassoun (V), Dee Kirkbride (III), Elaine Olson (X), Cookie Perkins (IV), Kay Romans (IX), Larry Stine (XI), Avis Wilson (VII), and Beryl Younger (XI). All are from Brookings. Docents conducted 128 tours in the Museum for 2,998 people last year and presented four programs to 600 students in local schools.

NEW AND RENEWING MEMBERS

September 1 - November 25, 1991

Sustaining Members

M.A. & Karen Lund, Sioux Falls

Supporting Members

Banner Associates, Inc., Brookings
Ralph & Elizabeth Cline, Brookings
John H. Dyvig, Bismarck, ND, matched by
State Farm Insurance
Einspahr Auto Plaza, Brookings
Garold L. Faber, Redondo Beach, CA
Phil & Susie Hendrickson, Brookings
Max & Ruth Myers, Brookings
Ella Ollenburg, Brookings
Oscar & Elaine Olson, Brookings
Charles & Barbara Watts Ploetz, Middleton, WI
Joseph & Signe Stuart, Brookings
3M Brookings Plant

Contributing Members

Samuel & Gladys Artz, Brookings
Virgil & Eileen Bell, Brookings
Eric & Ruth Brown, Lexington, NE
Max & Muriel Brown, Plymouth, MN

Tim & Peggy Brown, San Francisco, CA
Walter & Marjorie Conahan, Volga
Richard & Beverly Craddock, Brookings
Ellen Davidson, Brookings
Eleanor Evenson, Brookings
Jocelyn Hanson, Sioux Falls
Wayne & Dorothy Hamilton, Armour
Elsie Hart, Brookings
Mylo & Lillian Hellickson, Brookings
William & Margaret Lytle, Brookings
Tom & Judy Martin, Brookings
Mabel McCrory, Brookings
James & Peg O'Connell, Brookings
Richard & Polly Powers, Brookings
Gertrude Schmieding, Brookings
James & Roxanne Skulstad, Brookings
SD Extension Homemakers Council
Lawrence Stine, Brookings
Dean & Harriet Swedlund, Brookings
Ila Telkamp, Brookings
Wendell & Marlys Thompson, Brookings
Florence Walder, Brookings
Mary Lou Walstrom, Brookings
Mr. & Mrs. Kenneth Way, Watertown
Louis & Elizabeth Williams, Brookings
Paul & Gay Witherington, Brookings

Board of Trustees

Jack Stengel, Milbank, President
Ann McKay Thompson, Pierre, Vice President
Herbert E. Cheever, Jr., Brookings, Secretary
J.W. Abbott, Yankton
L. Don Andrews, Sioux Falls
Phyllis Bartling, Brookings
Hilton M. Briggs, Brookings
Dona S. Brown, Huron
Jocelyn Hanson, Sioux Falls
Jeannette C. Lusk, Huron
Vera Way Marghab, Watertown
Larry Ness, Yankton
Larry Piersol, Sioux Falls
Mary Thompson, Brookings
Robert T. Wagner, Brookings

Guild Directors

Dee Kirkbride, President
Kay Romans, Vice President
Margo Chamberlin, Secretary
Cookie Perkins, Treasurer
Elaine Olson, Historian
Joanne Johnson
Larry Stine

Staff

Joseph Stuart, Director
Francine Marcel, Exhibitions Curator
Cora Sivers, Marghab Collection Curator
Elaine Hietbrink, Secretary
Ruth Emerick, Gift Shop
Cheryl Paige, Building Custodian
David Dulas, Security
Leon Eich, Security
Kimberly Fordham, Security
John Ghost, Security
Carrie Hollenbeck-Hintz, Security
Cheryl Olinger, Security
Trent Westin, Security

2750 copies of this document were printed by the Friends of the South Dakota Art Museum at a cost of 25 cents each. MA001 12-91

South Dakota Art Museum

Medary Avenue at Harvey Dunn Street
South Dakota State University
Brookings, South Dakota 57007
(605) 688-5423



Accredited by the American
Association of Museums

BRIGGS LIBRARY
2115
BL

CM

Free public hours: 8 a.m.-5 p.m. weekdays,
10 a.m.-5 p.m. Saturdays, and 1-5 p.m. Sundays
and holidays, Closed New Year's, Thanksgiving,
and Christmas days.

Non-Profit Org.
U.S. Postage
PAID
Brookings, SD
Permit 24