

South Dakota State University
**Open PRAIRIE: Open Public Research Access Institutional
Repository and Information Exchange**

South Dakota County Profiles: 2007

SDSU Census Data Center

9-27-2007

Day County

W. Trevor Brooks
South Dakota State University

Follow this and additional works at: https://openprairie.sdstate.edu/census_data_county-profiles

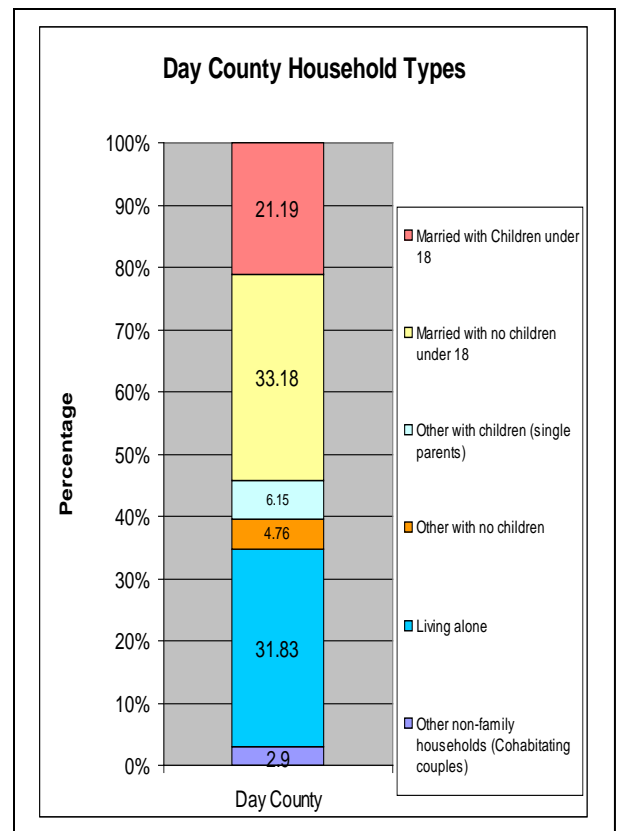
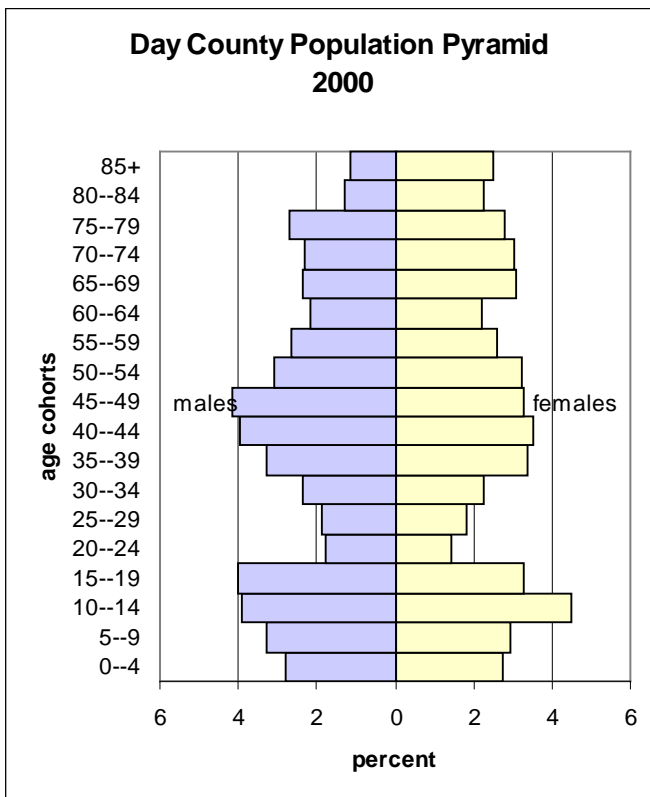
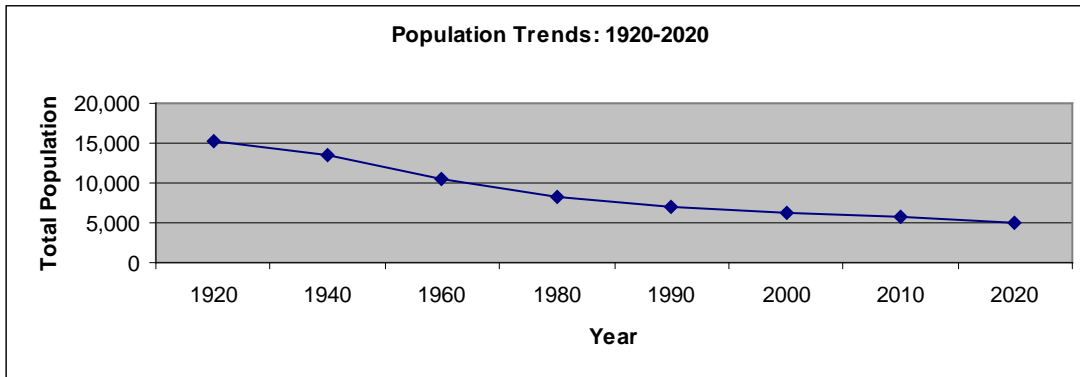
Recommended Citation

Brooks, W. Trevor, "Day County" (2007). *South Dakota County Profiles: 2007*. 18.
https://openprairie.sdstate.edu/census_data_county-profiles/18

This Other is brought to you for free and open access by the SDSU Census Data Center at Open PRAIRIE: Open Public Research Access Institutional Repository and Information Exchange. It has been accepted for inclusion in South Dakota County Profiles: 2007 by an authorized administrator of Open PRAIRIE: Open Public Research Access Institutional Repository and Information Exchange. For more information, please contact michael.biondo@sdstate.edu.

Day County Population Trends

1920	1940	1960	1980	1990	2000	2010	2020
15,194	13,565	10,516	8,133	6,978	6,267	5,649	5,105

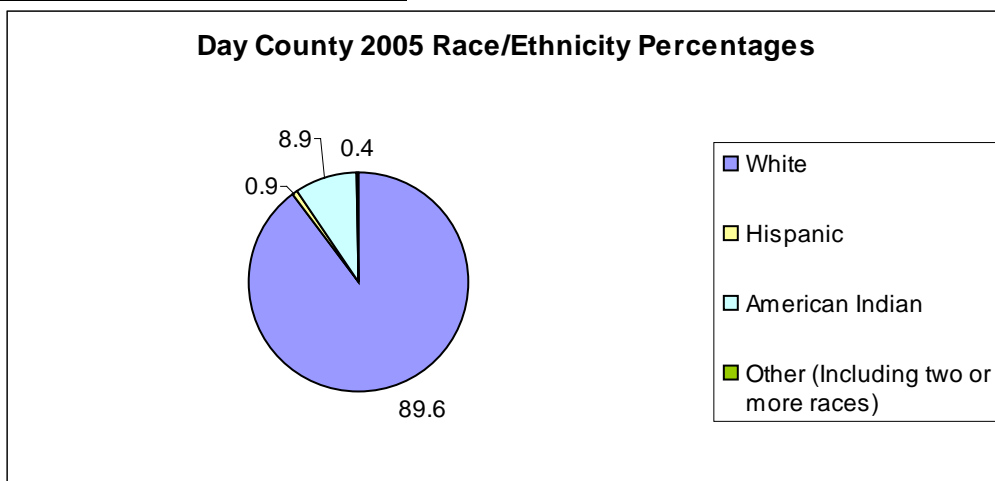


Where People Live in 2000 (by percent)				
	South Dakota	Day	Clark	Marshall
Urban	51.92	0	0	0
Rural-Farm	7.72	15.40	25.49	14.90
Rural-Non farm	40.36	84.60	74.51	85.10

Day County Population Highlights

- From 1990 to 2000, Day County **lost 711 residents**, which was a **10.2% decrease** in its total population.
- From 1990 to 2000, Day County **lost 414 residents to out-migration**. This was a **5.9% decrease** in its total population.
- From the population pyramid we can tell that Day County is losing many residents aged 20-29.
- **25.50%** of Day County's residents are **under the age of 18**, while **23.49%** are **aged 65+**.
- Day County's **median age is 42.9**. This is older than both Clark and Marshall counties.
- Day County's **sex ratio is 96.52**, meaning there are about 97 males for every 100 females. This is lower than both Clark and Marshall counties.
- Day County's **fertility rate is 65.7** births for every 1,000 females aged 15-44. This is higher than both Clark and Marshall counties.

Race/Ethnicity in Day County



Day County Agriculture in 2002

- Day County had **704 farms** which was a **3.6% decrease** from 1997.
- Day County's **average farm size was 754 acres**. This is smaller than both Clark and Marshall counties.
- Day County's **average net farm income was \$29,623**. This is lower than both Clark and Marshall counties.

Day County Economics in 2000

- Day County's **per capita income was \$15,856**. This is slightly lower than Clark, but slightly higher than Marshall.
- Day County's **median household income was \$30,227**. This was slightly higher than Clark, but slightly lower than Marshall.
- **15.4%** of Day County's residents aged 25+ **had received a B.S. degree or higher**. This is higher than Clark, but lower than Marshall.
- **14.28%** of Day County's residents are **living at or below the official poverty line**. This compares with 13.18% for the state of South Dakota, 14.40% for Clark County, and 13.88% for Marshall County.
- **20.87%** of Day County's **children under the age of 5** are **living at or below the official poverty line**. This compares with 19.77% for the state of South Dakota, 28.51% for Clark County, and 14.89% for Marshall County.
- **17.0%** of Day County's working age residents **commute to another county to work**. This is lower than Clark, but higher than Marshall.

Day County Employment by Industry

Top Industries (in terms of numbers)	Percentage	Number
Educational, health, and social services	21.29	575
Agriculture	18.92	511
Manufacturing	13.37	361
Retail	8.74	236
Construction	5.59	151
Public Administration	3.55	96
Total		2,701

Income Distribution

	South Dakota	Day	Clark	Marshall
Total:	290,336	2,606	1,590	1,833
Less than \$10,000	30,881	376	229	275
\$10,000 to \$14,999	22,421	224	152	168
\$15,000 to \$19,999	22,190	242	118	136
\$20,000 to \$24,999	24,633	235	144	175
\$25,000 to \$29,999	22,190	216	145	138
\$30,000 to \$34,999	21,694	190	146	164
\$35,000 to \$39,999	19,408	202	98	119
\$40,000 to \$44,999	19,077	137	103	99
\$45,000 to \$49,999	16,675	138	70	86
\$50,000 to \$59,999	27,809	216	158	179
\$60,000 to \$74,999	26,008	237	117	164
\$75,000 to \$99,999	20,150	114	59	70
\$100,000 to \$124,999	7,597	39	25	37
\$125,000 to \$149,999	3,493	22	6	6
\$150,000 to \$199,999	2,872	8	4	3
\$200,000 or more	3,238	10	16	14

Data compiled by:

W. Trevor Brooks
Rural Life and Census Data Center
South Dakota State University

Sources:

South Dakota Data Center (Vermillion, SD)
South Dakota Labor Market
U.S. Census of Agriculture (2002)
U.S. Census Bureau (2000)