

South Dakota State University

Open PRAIRIE: Open Public Research Access Institutional Repository and Information Exchange

NRM Newsletter

Department of Natural Resource Management

Winter 2021

Natural Resource Management Newsletter, Fall 2020/Winter 2021

Department of Natural Resource Management
South Dakota State University, Jiyoung.Kim@sdstate.edu

Follow this and additional works at: https://openprairie.sdstate.edu/nrm_news



Part of the [Life Sciences Commons](#), and the [Natural Resources Management and Policy Commons](#)

Recommended Citation

Natural Resource Management, Department of, "Natural Resource Management Newsletter, Fall 2020/Winter 2021" (2021). *NRM Newsletter*. 23.

https://openprairie.sdstate.edu/nrm_news/23

This Newsletter is brought to you for free and open access by the Department of Natural Resource Management at Open PRAIRIE: Open Public Research Access Institutional Repository and Information Exchange. It has been accepted for inclusion in NRM Newsletter by an authorized administrator of Open PRAIRIE: Open Public Research Access Institutional Repository and Information Exchange. For more information, please contact michael.biondo@sdstate.edu.



Faculty

- ◇ Michele Dudash ... Department Head & Professor
- ◇ Alexander (Sandy) Smart ... Assistant Dept. Head & Professor
- ◇ Steven Chipps ... Adjunct Professor/Unit Leader USGS
- ◇ Alison Coulter ... Assistant Professor
- ◇ Dave Coulter ... Adjunct Assistant Prof. & Temporary Instructor
- ◇ Krista Ehlerst ... Asst. Professor/Extension Range Specialist
- ◇ Bruce Eichhorst ... Instructor/OLFS Assistant Director
- ◇ Kent (KC) Jensen ... Associate Professor
- ◇ Maribeth Latvis ... Assistant Professor
- ◇ Joshua Leffler ... Assistant Professor
- ◇ Don McCrea ... Instructor
- ◇ Lora Perkins ... Associate Professor
- ◇ Joshua Stafford ... Adjunct Assoc. Prof/Asst. Unit Leader USGS
- ◇ Lan Xu ... Professor
- ◇ Charles Fenster ... NRM Affiliate Professor/OLFS Director
- ◇ Maaz Gardezi ... NRM Affiliate Assistant Professor
- ◇ Deepthi Kolady ... NRM Affiliate Assistant Professor
- ◇ Stella Liu ... NRM Affiliate Assistant Professor
- ◇ Candace May ... NRM Affiliate Assistant Professor
- ◇ Christopher Saunders ... NRM Affiliate Associate Professor

SDSU Extension Specialists

- ◇ Jessalyn Bachler ... Range Field Specialist
- ◇ Peter Bauman ... Natural Resources and Wildlife Field Specialist
- ◇ Katherine Jaeger ... Youth Outdoor Education Field Specialist
- ◇ Sean Kelly ... Range Management Field Specialist

Staff

- ◇ Beth Byre ... Accountant
- ◇ Jiyoung Kim ... Support Staff
- ◇ Duane Olson ... Field Station/WLRU Grounds Keeper
- ◇ Katie Tvedt ... Support Staff

Box 2140B, McFadden Biostress Lab #138
Brookings, SD 57007
(605) 688-6121

Email: SDSU.NRM@sdsu.edu

- **Webpage** <http://www.sdsu.edu/nrm>
- **Facebook** <https://www.facebook.com/SDStateNRM>
- **Job Posts** <https://www.facebook.com/SDState-Natural-Resource-Job-Announcements-699103456779362/>
- **YouTube Channel**
https://www.youtube.com/channel/UCng4HeZ0Nr6r_XUtkRI_bg

2020-2021 STUDENT CLUB & ADVISOR

American Fisheries Society (AFS) Student Chapter	Steve Chipps
Ecology Club	Lan Xu
Botanical Society of America (BSA) Student Chapter	Maribeth Latvis
Natural Resource Law Enforcement (NRLE) Club	Don McCrea
Range Club	Sandy Smart
Wildlife and Fisheries Conservation Club (WFCC)	Bruce Eichhorst



Dear Alumni, Donors and Friends,

It has now been one year since our campus shut down because of Covid-19 and we completed the semester via on-line learning. The NRM Faculty rose to the occasion to provide meaningful remote learning experiences throughout this year when we were unable to accommodate large class sizes due to density restrictions. Additionally, our campus had to design a plan and implement processes to pursue our trifold mission while following CDC guidelines to ensure our campus community's safety. I would like to publicly THANK all of the staff, faculty and students of NRM and around campus who contributed to this effort! Summer 2020 was quiet on campus as we prepared for the Fall semester and we are now almost half-way through the Spring 2021 with hopes for an "in-person" outdoor graduation celebration. In spite of the pandemic, we had 61 undergraduate and 13 graduate students complete their degrees in 2020. We truly hope that Fall 2021 brings a new normal to campus where we can be together again.

Unfortunately, this is our 2nd year without an Award and Scholarship Banquet. However, please rest assured our students are excelling and lining up experiential learning opportunities for Summer 2021 and can't wait to return to SDSU in the fall! NRM has once again had staffing changes with the retirement of Distinguished Professor Jon Jenks, after over 29 years of service, Assistant Professor Rob Lonsinger chose to join a USGS Coop Unit in Oklahoma, and Assistant Professor Onja Razafindratsima joined the faculty at UC Berkeley. So, this spring we are in the midst of searching for TWO wildlife faculty who study mammals with the hopes that both would be on campus by Fall 2021 semester. We also officially welcomed Assistant Professor, Alison Coulter, to her tenure track position in Fisheries and a new range field specialist, Jessalyn Bachler, will be joining our team later this month. Furthermore, we welcomed Maaz Gardezi, Deepthi Kolady and Candace May, as Affiliate faculty members.

Our Award and Scholarship Program for both academic years 2019-2020 and 2020-2021 can be found at the end of our newsletter. Thanks again to all of our donors for their ongoing support! I want to wish you all the best, and please stay safe as we await enough vaccine to protect our campus, local communities, our nation and around the globe!

Michele

One Day For State

One Day For State was held on September 10, 2020 for 24 hours across nation.

We are delighted to share that our Department through our generous donors, alumni and friends raised **\$3,290** for our departmental discretionary fund.

THANKS AGAIN for your ongoing support!



SDSU Extension NPI Range Roundup

SDSU Native Plant Initiative The SDSU Native Plant Initiative (NPI) was developed and is spearheaded by **Lora Perkins**. Several other SDSU personnel are involved and are listed on the Native Plant Initiative website. The mission of the NPI is to conduct research, education, and outreach to support excellence in native plant restoration and production in the Northern Great Plains. Specifically, the NPI will produce science that provides us with a better understanding of native plant restoration and production. This information will be shared with producers, land managers, and local communities, as well as the general science community. Students at every level - from K-12 to graduate - are involved in the NPI's research and outreach activities.



Overall Research Objectives One theme of the NPI's research is native plant species ecological and genetic considerations. Characteristics that are being investigated to inform suitability are ease of propagation, cultural importance, rare species, benefits to pollinators, and charisma (showy species or state flowers).

A second theme of the NPI's research is native plant restoration - how do we go about successfully restoring degraded areas? Several aspects will be looked at to answer this question, including what site pre-treatment is needed, the role of seed and soil treatments in enhancing establishment, survival, and performance, best practices for transplanting native species into the field, and which management methods maintain or increase native species after restoration.

Another objective of the NPI's research is native plant production, including seeds and seedlings. Planting methods will be determined for each native species and will focus on evaluating variables such as row spacing, seeding rate, and seeding depth.

Current NPI Efforts The NPI has been off to a steady start, beginning with greenhouse propagation of over 20 different wildflowers and grasses that are prairie species native to South Dakota. Among the species that were propagated were: field pussytoes, swamp milkweed, prairie smoke, Rocky Mountain gayfeather, large beardtongue, obedient plant, Indian breadroot, and pasqueflower, to name a few! The hard work of the NPI resulted in over 3,000 of these species that were offered at a Native Plant Sale held in Brookings this past spring. Hundreds of people came to the sale, and the seedlings are now established as part of natural, native landscaping efforts in eastern SD.

PI Lora Perkins and co-PI Shin-Yi Marzano were awarded a USDA NIFA multi-year grant on soil health titled "Flower fields and soils: The impacts of native perennial monoculture plots on soil health"

Impact The work that SDSU's NPI is conducting will improve the information we have about South Dakota's native plants, including which ones are best suited to restoration and production. This information will help guide stakeholders such as land managers, producers, and gardeners in matching native species to desired restoration outcomes.

To learn more, please visit <https://extension.sdstate.edu/range-roundup-sdsus-native-plant-initiative?fbclid=IwAR13EWBtEQUmouP6UYqy4DfdEPT64zOZTdLzk-RN5o-yAghMiV3ffs8s0Fk>

Don McCrea and NRLE News

Don McCrea was interviewed by John Adams on the “Crosstalk” radio program out of Knoxville, TN on October 22, 2020. The topic focused on national law enforcement issues from Don’s perspective. This program has thousands of regular listeners.

In other news, Don was appointed to the State of Georgia Blue Ribbon Panel on Police Use of Force Reform following the Rayshard Brooks incident in Atlanta. In this role, Don had the privilege of composing a major article for the Peace Officers Association of Georgia’s quarterly magazine. The title of the article is “Officer-induced Escalation: Making the Case for Non-Escalation Training.”

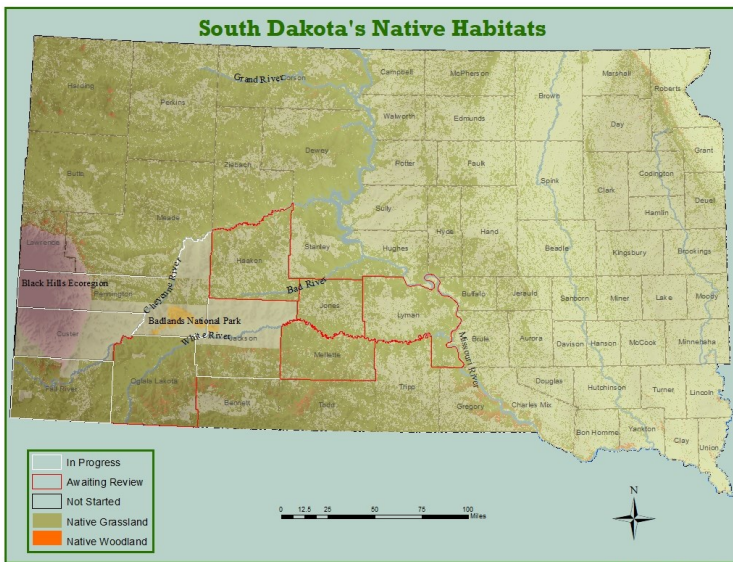
Lastly, Don is in the process of becoming approved as one of only a few nationally recognized use of force experts by the United States Department of Justice, Washington Office of Community Oriented Policing Services through DOJ’s national CRI-TAC program (Collaborative Reform Initiative Technical Assistance Center).

The right photo shows 4 happy NRM alumni who just completed the 13 week basic law enforcement academy in Pierre!



From left to right: Patrick Beffa (NRLE), Kyle Reeves (NRLE), Samantha Williams (NRLE) & Logan Hammer (WLFS)

Pete Bauman Updates Western SD Undisturbed Land Data



This posting is a continuation of the methodologies and results previously described in this data series. By clicking on the links below the user will find access to fully completed and reviewed Potentially Undisturbed Land (PUDL) data and preliminary data for certain western SD counties.

The Submissions from 2019 series includes complete and reviewed maps and data files posted in September 2019 for: Zeibach, Dewey, Stanley, Corson, and Gregory Counties.

The Submissions from 2020 series are new updates and include complete and reviewed maps and data files posted in September 2020 for: Tripp, Todd, and Bennett Counties. This data includes full access to the shapefiles, geodatabase, and county maps (pdfs and jpegs). This heading also includes links to preliminary (non-reviewed) county level data posted in September 2020 for: Haakon, Jones, Lyman, Mellette, and Oglala Lakota Counties. These counties are awaiting final technical review. Finally, this heading includes initially mapped portions of Pennington, Jackson, and Fall River Counties. Note: These data are only ‘preliminarily’ mapped, and have not been through the final review process. While likely very accurate, the application of these data for decision making should be used with caution. However, we wanted to provide the most complete update possible. Look for additional updates as we move to complete the initial mapping phase of this project over the next several months. Please contact the authors via email with questions.

The link below allows full access to the shapefiles, geodatabase, and county maps (pdfs and jpegs).

https://openprairie.sdstate.edu/data_land-westernSD/

First Annual NPI Photo Contest

First Place: Purple Prairie Clover by Cynthia Bergsbaken



Second Place: Anemone Patens Pasqueflower by Emily Mack



Third Place: Cypripedium Montanum (mountain lady's slipper orchid) by Daryl Mergen



*Special Award: Hoksi/Cekpa/Pasque Flower/
Pulstilla by Kahomy Souksavath*



Conservation Planning & Park Management Undergraduate Student Eagle Scout Project

This year has been a difficult year for almost everyone. Despite that, many people have vowed to push on and keep busy. Eagle Scout **Jacob Lueth** is one such individual, as he completed his Eagle Scout Project building dog exercise houses for the Martin County Humane Society.

“So my dad and I looked around the Fairmont community for an opportunity to give a helping hand. That’s when we stumbled upon the Humane Society. They were looking forward to expanding their number of dog kennels, but they needed more housing for the dogs. To find out more information, we talked to Robin Wiebe, one of the top dogs at the Martin County Humane Society, and asked if we could tackle the project for her. That is when she gave us the go ahead to begin planning to build four dog houses.”

“We started by using Autodesk Inventor to make a 3D model of the house we wanted to build. The model would be based off the dog house design by Alexis Hinz from Girl Scout Troop 33664. She had built some dog houses years prior for MCHS.”

“We had raised about \$300. We needed about \$1,200, but since my dad works for Avery Weight-Tronix, our total costs were covered with the \$300 we had. Weight-Tronix matched the \$300 and tripled the amount giving us \$900.”

“Luckily, while working with Aaron Hendericks, another Eagle Scout in Troop 56, on his Eagle Scout project, my dad had spotted some pallets in the woods by the buildings at Cedar Point campground. Asking the owner of the grounds about them, we were told that we could take them home with us and use the pallets for my project.”

Lueth stated that January through March of 2020 was filled with work as he and his father began making the first house on their own. Once they figured out the specifics, they were able to get his troop involved in the process.

“The Troop came over in March right before the pandemic forced us away from each other. We ended up practically completing all the houses. The only thing left to do was add a second coat of paint and attach plastic covering to the edges of the house itself.”

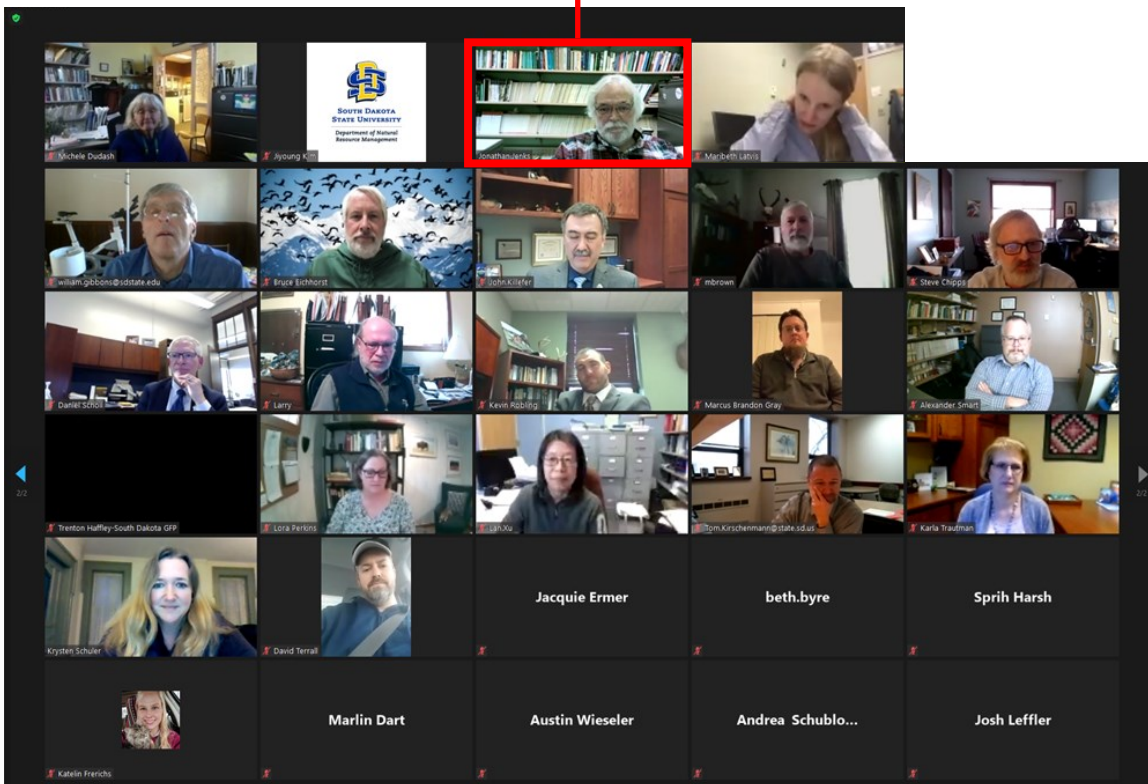
“I would like to thank the businesses who supported this project for MCHS, like Avery Weight-Tronix and Richard’s. Thank you also to all the individuals who have helped too, such as my parents, the people who make up Troop 56, and the staff and MCHS.

Lueth is currently enrolled in our Conservation Planning and Park Management program. He is also considering job possibilities in teaching and aviation.

To read the full article, please see

<https://www.fairmontsentinel.com/news/local-news/2020/11/09/humane-society-eagle-scout-builds-dog-houses/>.

Jon Jenks' Zoom Retirement Celebration



On January 19, we gathered remotely to thank Jon for his 29 plus years of commitment to SDSU.

29 years devoted to wildlife science education, research (taken from Brookings Register - 01/29/2021)

BROOKINGS – For the past 29 years, Jonathan Jenks, Distinguished Professor of Natural Resource Management at South Dakota State University, has devoted his professional life to researching wildlife populations and educating young people hoping to enter the wildlife ecology and natural resource management industries.

Jenks' career at SDSU neared its end this month, with his retirement on Jan. 21.

Growing up in rural Massachusetts, Jenks was exposed to wildlife at a young age. Upon completing his high school education, Jenks attended Unity College in Maine where he earned an associate degree in environmental science and a bachelor's degree in wildlife management. He then attended the University of Maine where he earned his master's degree in wildlife management, and later completed his Ph.D. in wildlife and fisheries ecology from Oklahoma State University.

After completing his Ph.D. in July 1991, Jenks moved to South Dakota, where he started his career as an Assistant Professor of Wildlife and Fisheries Sciences at SDSU. Throughout his career, he has worked with many different species of wildlife but has grown to enjoy learning about bighorn sheep, whitetail deer and mountain lions the most.

"They were all exciting species to work on," said Jenks. "However, my more recent work with bighorn sheep diseases and mountain lions in the Black Hills has been really interesting. Since my graduate degrees focused on whitetail deer, it has been great to continue working on that species as well."

Jenks has conducted and broadly published research that addresses wildlife questions using ecological theory to provide knowledge and management tools for agency resource biologists. He also has conducted extensive research on the ecology of large mammals that inhabit South Dakota and the Northern Great Plains Region; research driven by the need to maximize opportunity for harvesting these species in addition to gathering knowledge about mountain lions that have recolonized the Black Hills of South Dakota and Badlands Region of North Dakota.

"One of the best things about being at SDSU has been being able to work in both eastern and western South Dakota," said Jenks. "I've enjoyed working with students and wildlife professionals in different regions of the state and seeing the diversity in species in the different areas of South Dakota."

To read the full article, please see <https://brookingsregister.com/article/29-years-devoted-to-wildlife-science-education-research>.

NRM Affiliate Assistant Professor, Maaz Gardezi - NSF Precision Ag Project: NSF project to build farmers' confidence in precision ag technologies

Building farmers' confidence in precision agriculture technologies is the goal of a National Science project led by **Maaz Gardezi**, an Assistant Professor of Sociology and Rural Studies and an affiliate faculty of Natural Resource Management at South Dakota State University.

“Precision agriculture technologies, such as artificial intelligence-based decision support systems, use localized farm data to generate site-specific recommendations on when to plant, seed, spray and harvest. Yet, some farmers lack confidence in these recommendations and have concerns with data ownership and privacy, which can impede the adoption of these precision ag tools,” Gardezi explained.

The four-year, \$3 million NSF project will use a unique approach to develop, test and implement new precision agriculture tools and public policies that are socially and economically feasible for farmers, rural communities and the environment.

“Our approach is using a network of farmers, nongovernmental organizations, industry representatives and Extension agents, not just as users, but as co-designers and co-evaluators of technology,” Gardezi said. Other SDSU faculty working on the project are Distinguished Professor David Clay of the Department of Agronomy, Horticulture and Plant Science and Assistant Professor John McMaine of the Department of Agricultural and Biosystems Engineering.

The living laboratory approach considers the needs and concerns of those who will use and benefit from these technologies during the initial stages of product development. “For example, farmers will be evaluating these technologies and will be teaching each other and us—through in-depth interviews and experimental design— how to use these tools and how to improve them,” Gardezi explained.

At the same time, involving nonprofit organizations and industry experts in the research will help balance artificial intelligence-based innovations with societal needs and environmental demands,” he noted.

Gardezi sees this research as having “a far-reaching impact on how we approach innovation collectively and responsibly, including who will use it, who will not and what will it replace. It’s a balanced overview of how innovation should be done.”

..... To read the full article, please see <https://www.sdstate.edu/news/2020/09/nsf-project-build-farmers-confidence-precision-ag-technologies>.



NRM Affiliate, Stella Liu - Faculty Feature video



Stella Liu is an Assistant Professor in Recreation Management in the Department of Health & Nutritional Sciences. Stella has been instrumental in helping design our undergraduate program in Conservation Planning and Park Management. Please check out the video!

https://www.youtube.com/watch?utm_medium=email&_hsmi=96684042&_hsenc=p2ANqtz-92bckxEC1-

SDSU Extension to assess farm-ranch stress statewide

SDSU Extension faculty will conduct a statewide comprehensive needs assessment to find more ways to help agricultural producers deal with stress through a new U.S. Department of Agriculture program.

The Farm and Ranch Stress Assistance Network program is a 12-state collaborative that seeks to expand stress management and mental health resources and services to agricultural producers and stakeholders in the North Central region. The program is supported by a three-year, nearly \$7.2 million USDA National Institute of Food and Agriculture grant through the 2018 Farm Bill.

“We decided to complete a comprehensive needs assessment to get a better understanding of how we can expand our work in South Dakota to provide more assistance across the state,” said SDSU Extension Mental Health Specialist Andrea Bjornestad, an associate professor in the Department of Counseling and Human Development. She leads the South Dakota team, which will receive more than \$440,000 in funding.

Bjornestad will be assisted by SDSU Extension Range Specialist **Krista Ehlert**, who will spearhead the West River effort from SDSU’s West River Research and Extension Office in Rapid City.

“By working together across the state, Dr. Bjornestad and I are combining our skillsets and expertise – hers in mental health and mine in agriculture – to have a multi-pronged approach to rural behavioral health,” Ehlert said.

SDSU Extension Director Karla Trautman said, “This project will establish the critical foundation needed to identify the mental health needs in rural communities across South Dakota. By establishing this foundation, SDSU Extension is then positioned to provide appropriate resources in accordance with our land grant mission, which is to provide transformational strategies that meet critical needs.”

To learn more, please visit [https://www.sdstate.edu/news/2020/11/sdsu-extension-assess-farm-ranch-stress-statewide?](https://www.sdstate.edu/news/2020/11/sdsu-extension-assess-farm-ranch-stress-statewide?utm_medium=email&_hsmi=102977002&_hsenc=p2ANqtz-8hXggjXxyK-5X_OR4RJzrhxRCF5v-1yQDY4bOAKntjhsGjesXj9XPCyLzUroKoWD4rkJ11-fMubE09niRHXDTzk7TCOA&utm_content=102977002&utm_source=hs_email)
[utm_medium=email&_hsmi=102977002&_hsenc=p2ANqtz-8hXggjXxyK-5X_OR4RJzrhxRCF5v-1yQDY4bOAKntjhsGjesXj9XPCyLzUroKoWD4rkJ11-fMubE09niRHXDTzk7TCOA&utm_content=102977002&utm_source=hs_email](https://www.sdstate.edu/news/2020/11/sdsu-extension-assess-farm-ranch-stress-statewide?utm_medium=email&_hsmi=102977002&_hsenc=p2ANqtz-8hXggjXxyK-5X_OR4RJzrhxRCF5v-1yQDY4bOAKntjhsGjesXj9XPCyLzUroKoWD4rkJ11-fMubE09niRHXDTzk7TCOA&utm_content=102977002&utm_source=hs_email).



PLEASE contact us with Alumni Updates!

We receive wonderful positive feedback from our readers concerning these updates.

Also, **please** send email address updates, corrections,
and share the newsletter with alumni, donors and friends
so we can continue to grow our email contact list.

Email to SDSU.NRM@sdstate.edu

Stay Well and Safe.

Thank You

for Your Ongoing Support!

Undergraduate Graduation 2020



Spring 2020

Colt Bradley (Deadwood, SD) - NRLE
 Corey Clements (Pierre, SD) - WFS
 Jacob DeBaun (Gowrie, IA) - NRLE & WFS
 Colby Den Herder (Edgerton, MN) - WFS
 Cody Doose (Granite Falls, MN) - WFS
 Pamela Fehr (Wimbledon, ND) - EES
 Skyler Foley (Sergeant Bluff, IA) - NRLE & WFS
 Connor Folkers (Waukee, IA) - NRLE
 Adam Franck (Dunnell, MN) - REM
 Taylor Geerdes (Rock Rapids, IA) - NRLE
 Cole Glanzer (Sioux Falls, SD) - WFS
 Alexis Grams (Hector, MN) - WFS
 Nathan Gubbels (Bemidji, MN) - NRLE & WFS
 Maria Guzzetta (New Brighton, MN) - NRLE
 Quinn Hanisch (Hartford, SD) - WFS
 McKenzie Hansen (Rapid City, SD) - WFS
 Cristian Haskins (Lindstrom, MN) - WFS
 Sasia Heitkamp (Wyndmere, ND) - WFS
 Desirae Hertling (New Ulm, MN) - NRLE & WFS
 Annie Hoerth (Tyndall, SD) - NRLE
 Dylan Hyronimus (Lennox, SD) - WFS
 Tanner Jenks (Mitchell, SD) - REM
 Isaac Johnson (Alexandria, MN) - WFS

Blaze Jones (Britton, SD) - REM
 Cody Kneip (Elk Point, SD) - EES
 Joseph Kretchman (Aberdeen, SD) - NRLE & WFS
 Thomas Mitzel (Tyndall, SD) - WFS
 Devin Mounce (Holden, MO) - WFS
 Branden O'Connor (Heron Lake, MN) - EES
 Jakob Pettit (Buffalo Lake, MN) - WFS
 Colten Plooster (Platte, SD) - WFS
 Kayla Pring (Morris, MN) - NRLE & WFS
 Anthony Richards (Ogden, UT) - WFS
 Micah Schlomer (Moorhead, MN) - WFS
 Jacob Schmitt (Winthrop, IA) - WFS
 Shyanne Seidel (Lemmon, SD) - REM
 David Shepherd (Valley, NE) - NRLE
 Kyle Sim (Sioux Falls, SD) - NRLE
 Jay Skaar (Albert Lea, MN) - WFS
 Madeline St. Claire (Galena, IL) - EES
 Jared VanRyswyk (Lake Crystal, MN) - EES
 Adam Walter (Adel, IA) - WFS
 Benjamin Witte (Clear Lake, SD) - EES & WFS
 Lorna Wright (Mankato, MN) - WFS
 Victoria Zephier (Phoenix, AZ) - WFS



Fall 2020

Logan Ackerman (Eureka, SD) - NRLE & WFS
 Cole Anderson (Estherville, IA) - WFS
 Madison Beenken (Titonka, IA) - CPPM
 Nathaniel DeJong (Orange City, IA) - WFS
 Kara Fairchild (Canby, MN) - REM
 Mitchell Gregg (Pierre, SD) - REM
 Dalton Johnson (Lone Rock, IA) - NRLE
 Nolan Litterer (Lake View, IA) - EES

Kyler Moffit (Sioux Falls, SD) - EES
 Madison Posusta (Silver Lake, MN) - WFS
 Bridget Ragan (Omaha, NE) - WFS & CPPM
 Anna Sells (Granville, IA) - WFS
 Madeline St. Claire (Galena, IL) - EES
 Alex Trautman (Rapid City, SD) - WFS
 Rylan Webster (Kasson, MN) - WFS & NRLE
 Paige Wiehr (Hutchinson, MN) - NRLE & WFS

NRM Faculty Google Scholar Profiles

— Click on the links to see our most recent publications!

Dr. Chris Cheek - Arriving August 2021

(Christopher.cheek@sdstate.edu)

Assistant Professor

Aquatic Ecology; Fisheries

<https://scholar.google.com/citations?hl=en&user=qDygn3MAAAAJ>

Dr. Steve R. Chipps

(Steven.Chipps@sdstate.edu)

Adjunct Professor, Leader-USGS SD Coop Unit

Aquatic Food Web Ecology; Fish Bioenergetics; Foraging Ecology; Contaminants

<https://scholar.google.com/citations?user=ZV9NKSAAAAAJ>

Dr. Alison Coulter

(Alison.Coulter@sdstate.edu)

Assistant Professor

Spatial Ecology; Behavior of fishes; Fisheries Sciences; Invasion Biology

<https://scholar.google.com/citations?hl=en&user=Jh1yTyMAAAAJ>

Dr. Michele R. Dudash

(Michele.Dudash@sdstate.edu)

Professor, Head of Department

Evolutionary Ecologist; Plant-pollinator interactions; Plant mating system Evolution; Conservation Genetics

<https://scholar.google.com/citations?user=K2oAEEkAAAAAJ>

Dr. Krista Ehlert

(Krista.Ehlert@sdstate.edu)

Assistant Professor

Rangeland Ecologist and Management

https://scholar.google.com/citations?user=ESC_GGEAAAAAJ

Dr. Charles Fenster

(Charles.Fenster@sdstate.edu)

NRM Affiliate Professor/OLFS Director

Evolutionary Biology; Evolutionary and Conservation Genetics; Floral Evolution; Pollinators and Sustainable Agriculture

<https://scholar.google.co.in/citations?user=YmpyLbEAAAAAJ>

Dr. Maaz Gardezi

(Maaz.Gardezi@sdstate.edu)

NRM Affiliate Assistant Professor

Climate, food, and water security; Governance of technologies; Climate policy; Advanced statistical methods

<https://scholar.google.com/citations?user=pXh4pm8AAAAAJ>

Dr. Kent C. Jensen

(Kent.Jensen@sdstate.edu)

Associate Professor

Avian Ecology and Management; Waterfowl Ecology and Management; Ornithology; Upland Gamebird Ecology and Management

Dr. Deepthi Kolady

(Deepthi.Kolady@sdstate.edu)

NRM Affiliate Assistant Professor

Sustainable agricultural systems; Carbon markets; Agricultural technology adoption; Consumer demand; Food security; Food and agricultural policy

<https://scholar.google.com/citations?user=kjnalTYAAAAAJ>

Dr. Maribeth Latvis

(Maribeth.Latvis@sdstate.edu)

Assistant Professor/Director of the C. A. Taylor Herbarium

Plant Systematics; Plant Conservation Biology; Phylogenetics; Plant Community / Biome Assembly

<https://scholar.google.com/citations?user=q09pvUAAAAAJ>

Dr. A. Joshua Leffler

(Alan.Leffler@sdstate.edu)

Assistant Professor

Plant Physiological Ecology; Ecosystem Ecology; Plant and Ecosystem Response to Climate Change

<https://scholar.google.com/citations?user=SNeFaHQAAAAAJ>

Dr. Stella (Hung-Ling) Liu

(Stella.Liu@sdstate.edu)

NRM Affiliate Assistant Professor

Survey & evaluation research techniques focus on behaviors in outdoor recreation; Human dimension of NRM; Impacts of recreation and tourism for individuals and community

<https://scholar.google.com/citations?user=8H1rTD4AAAAAJ>

Dr. Candace May

(Candace.May@sdstate.edu)

NRM Affiliate Assistant Professor

Political economy of sustainable development, natural resources, & environmental governance

<https://scholar.google.com/citations?user=AC8twhwAAAAAJ>

Dr. Lora Perkins

(Lora.Perkins@sdstate.edu)

Associate Professor/NPI Lead Faculty

Plant Ecology; Biological Invasions; Plant-Soil Interactions; Restoration Ecology

<https://scholar.google.com/citations?user=w8gEwekAAAAAJ>

Dr. Christopher Saunders

(Christopher.Saunders@sdstate.edu)

NRM Affiliate Associate Professor

Mathematical Statistics; Statistical Pattern Recognition

<https://scholar.google.com/citations?user=z6zrlTcAAAAAJ>

Dr. Alexander "Sandy" Smart

(Alexander.Smart@sdstate.edu)

Professor, Assistant Head of Department

Rangeland Ecology and Management: Grazing, Fire, Range Improvements; Ecosystem Goods and Service

<https://scholar.google.com/citations?user=gN13d2kAAAAAJ>

Dr. Joshua D. Stafford

(Joshua.Stafford@sdstate.edu)

Adjunct Associate Professor, Assistant Leader-USGS SD Coop Unit

Ecology and Management of Waterfowl and Wetlands; Foraging Ecology; Statistics

<https://scholar.google.com/citations?user=KsM1Gb8AAAAAJ>

Dr. Lan Xu

(Lan.Xu@sdstate.edu)

Professor

Plant Ecology; Rangeland Reclamation; Restoration and Improvement; Vegetation Succession; Plant Responses to Stressors; Plant Reproductive Strategy; Soil seed and bud bank

https://scholar.google.com/citations?user=l_gaRiYAAAAAJ

Dr. Jennifer Zavaleta Cheek - Arriving Aug. 2021

(Jennifer.ZavaletaCheek@sdstate.edu)

Assistant Professor

Conservation Biology; Human Dimensions of Resource Utilization; Sustainable Development

<https://scholar.google.com/citations?user=TQu1pmMAAAAJ>

Dr. Dave Coulter

(David.Coulter@sdstate.edu)

Adjunct Assistant Professor

Fisheries; Aquatic Sciences

<https://scholar.google.com/citations?user=gsOPFBgAAAAAJ>

Opportunities to support the NRM Department

Your impact: Funds that enable strategic initiatives in academic and research programs through implementation of the NRM Department's strategic plan including:

Endowed Professorships in our major research areas. Our initial foci will be in Fisheries and Wetlands.

Clifford H. Fiscus Endowment helps support our NRM Departmental seminar series. Clifford H. Fiscus (B.S. 1950) was a long-time friend of the department. In 2004, he provided an endowment to the department to bring guest speakers to campus. This is an important aspect of our graduate student training and pursuit of scholarly excellence.

NRM Education Fund. This fund enables talented undergraduate students to present their research at local and national meetings.

Undergraduate Program Targeted Scholarships. Gifts can be targeted toward undergraduate scholarship funds in

- (1) Conservation Planning and Park Management,
- (2) Ecology and Environmental Science,
- (3) Natural Resource Law Enforcement,
- (4) Rangeland Ecology and Management,
- (5) Wildlife and Fisheries Sciences.

Expanding competitive graduate student research awards.

If you are interested in donating at the \$1000 level or above, we can work with you to develop a named scholarship. A list of our current named scholarships can be found at <https://www.sdstate.edu/natural-resource-management/undergraduate-scholarships-awards>.

- **Dave Willis Fisheries Research Award Endowment**

This Endowment was established to honor Dr. Willis' life work and to sustain his legacy through promoting excellence in fisheries education and research. We encourage and appreciate your support of Dave's legacy through a donation to support the growth of this endowment. Gift pledges can be made over multiple years or as single donations. Proceeds will be used to provide competitive research awards to graduate and undergraduate fisheries students who have demonstrated scholarly excellence in fisheries science and best personify Dave's exceptional career and service to our nation's natural resources.

- **Kenneth F. Higgins Waterfowl Legacy Research Endowment**

This Endowment honors the life and the distinguished career of Dr. Ken Higgins, a former wildlife research biologist with the U.S. Department of the Interior and the South Dakota Cooperative Fish and Wildlife Research Unit, and a professor emeritus in the Department of Wildlife and Fisheries Sciences at South Dakota State University.

- **Clifford H. Fiscus Waterfowl Research Endowment**

The Fiscus Waterfowl Research Endowment fund honors the life of Mr. Fiscus, who earned a degree in Wildlife Management at South Dakota State College. This endowment provides support for waterfowl research activities which may enhance future management or welfare of waterfowl or other wetland dependent avian species and/or their habitats.

- **Dr. Robert A. Klumb Memorial Endowment**

This Endowment honors the memory of Dr. Robert "Rob" Klumb (1967-2013) by his family. Rob was Project Leader for US Fish & Wildlife Service and an Adjunct Associate Professor at South Dakota State University. This Scholarship is award annually.

- **Kevin Honness Memorial Scholarship Announcement**

The Honness Scholarship is awarded each year to student members of the Great Plains Natural Science Society. Two awards (\$500 each) are currently available, one for graduate and one for undergraduate researchers. Preference will be given to students conducting research in the Great Plains. Applications will be accepted each year from 1 November until 28 February. Interested students can find additional details at <https://greatplainsnaturalsciencesociety.com/kevin-honness-memorial-scholarship/>.

- **Curtis M. Twedt Upland Game Research Endowment**

Curtis M. Twedt, a native of Volga, SD, graduated in Wildlife and Fisheries Sciences in 1959. Dr. Twedt enjoyed a 31-year career with the Nebraska Game and Parks Commission as an upland game and research biologist. The recipient of the Twedt research grant shall be selected by the Department of Natural Resource Management at SDSU. The long-term vision of the Department is to eventually be able to provide a graduate research assistantship from this endowment.

- **Jesse W. West Research Endowment**

This Endowment is intimately tied to the Pond Boss magazine and forum. It honors the life of Jesse W. West, a Mississippian and professor of geology. While teaching geology "summer camp" in the west, including Colorado, California, and the Black Hills (one of his favorite geologic places), he developed a love of the area and its people which he shared with his family. His strong belief in helping others along their journey in applied science is the cornerstone of Jesse's endowment.

Off Campus Research Facilities - Oak Lake Field Station or NRM Research Support Unit (Wildlife and Fisheries Research Unit). Existing resources to which you could contribute are identified below.

Your impact: Expanding endowed undergraduate research opportunities grants for our Oak Lake Field Station and Wildlife and Fisheries Research Unit. Funding to support construction of off-campus teaching and research facilities and/or purchase large research equipment.

Charles and Marcia McMullen Undergrad Research Award.

An Endowment recently established in honor of Dr. Charles and Marcia McMullen who have been long-time supporters of the Oak Lake Field Station. Chuck served as the first director of the Oak Lake Field Station and was instrumental in working with President Robert Wagner to establish the field station as a resource to students interested in the natural sciences. This endowment provides support for NRM undergraduate students interested in conducting undergraduate research at the station.

Oak Lake John Haertel Memorial Research Award

An Endowment established in honor of Dr. Jon Haertel, vertebrate biologist in Biology & Microbiology. Jon’s love of vertebrate animals and long-time contributions to the study of vertebrates resulted in establishment of this endowment to support undergraduate research on vertebrates at the Oak Lake Field Station.

Rogen-Trooien Oak Lake Endowment

An Endowment established in honor of Alvera Rogen and the Trooien Family who had a long-time family connection and interest in the Oak Lake Field Station. This fund was established to support long-term maintenance and development of facilities at the Oak Lake Field Station toward the education and development of students interested in South Dakota natural resources.

Oak Lake Field Station Fund

A flexible field station account developed using unrestricted gifts to the Oak Lake Field Station and utilized for newsletters, web site, hospitality expenses and meeting attendance in relation to field station operations and programs.

Endowed Research Faculty positions in Ecology or Environmental Science, Range Ecology or Range Management, Wildlife Biology and Fisheries Biology.

Your impact: Faculty endowments provide funding for perpetuity that will allow the Department to recruit exceptional faculty members and provide them with the resources that are essential to their ability to do their critical work.

(Targeted gifts would also be appreciated to support the purchase of research equipment and enhancement of research lab facilities in each of the areas identified above.)



YES! I wish to contribute to the SDSU Department of Natural Resource Management.

Online gifts can be made through: www.sdstatefoundation.org

My/our gift will be paid in the following manner:

Check (please make payable to the SDSU Foundation)

Credit Card

Visa MasterCard Discover AmEx

Card Number: _____

Expiration Date: __ / __

Signature: _____

Please accept my/our tax-deductible gift in the amount of:

\$50 \$100 \$500 \$1,000 or Other \$ _____

Name(s): _____

Address: _____

City, State, Zip: _____

E-mail: _____

Phone: _____

Mail the completed form to:
 SDSU Foundation
 Lohr Building
 815 Medary Avenue, Box 525
 Brookings, SD 57007

Please return this form or contact our Foundation partner, Mark Sandager
 (Mark.Sandager@sdsufoundation.org, 605-215-2006)
 to learn more about how you can make a difference in the NRM Department.



Photo by Alumnus, Alex Rosburg

South Dakota State University
Department of
Natural Resource Management

2019 & 2020
Award and Scholarship
Program

UNDERGRADUATE AWARDS

❖ **Alven Haak Family Scholarship in Natural Resource Management**

Donors Joyce Haak and Paul Brooks
When initiated 2019
Basis of award Sophomore or higher level in NRM
Recipient Kaleb Kaster (2019 & 2020)

❖ **Bob and Carroll Hanten Endowed Scholarship in Fisheries**

Donors Carroll Hanten
When initiated 2009
Basis of award Undergraduate student pursuing a degree in WFS with an emphasis in the field of fisheries sciences
Recipient Joseph Kretchman (2019)
Taysa Hutmacher (2020)

❖ **Brent Wilbur Wildlife Conservation Scholarship**

Donors Lori Wilbur and Dan Nelson
When initiated 2012
Basis of award Junior student majoring in Wildlife Management or Conservation
Recipient Kaitlyn Bratberg (2019)
Phillip Hummel (2020)

❖ **Brookings Wildlife Federation Scholarship**

Donors Brookings Wildlife Federation
When initiated 1987
Basis of award Sophomore in NRM. Must be active in the Wildlife and Fisheries Conservation Club.
Recipient Brandt Boekhout (2019)
Robin Brewer (2020)

❖ **Claude V. Lamoureux Memorial Scholarship in Support of the Jackrabbit Guarantee**

Donors President Barry and Jane Dunn
When initiated 2010
Basis of award Student eligible for Jackrabbit
Guarantee majoring in Range
Science
Recipient Lydia Raderschadt (2019)
Randi Tivis (2020)

❖ **Clifford and Alice Falken Scholarship**

Donors Mike Barber and Family
When initiated 2015
Basis of award Sophomore or higher level with a GPA
of 2.8 or higher. Preference to students
that demonstrate financial need.
Recipient Brady Dickerson (2019)
Spencer Kuiper (2020)

❖ **David Bartling Scholarship in Wildlife & Fisheries Sciences**

Donors Robert Bartling
When initiated 2005
Basis of award Sophomore or high level in WFS major.
Preference to students pursuing a
career as a Conservation Officer
Recipient Caleb McNeil (2019)
Bethany Bespoyasny (2020)

❖ **David J. Holden Memorial Scholarship**

Donors Nelda Holden
When initiated 1988
Basis of award Student in EES major
Recipient Drake Laverack (2019)
Jennalee Larson (2020)

❖ **Dr. Robert A. Klumb Memorial Scholarship Endowment**

Donors Bob and Florence Klumb
When initiated 2015
Basis of award Current Fishery student in good academic standing with a cumulative GPA of 3.0 or higher. Shall have plans to pursue graduate study in areas related to fisheries or a career as a fisheries professional.
Recipient Cody Watkins (2019)
Bryce Capesius (2020)

❖ **Ecology and Environmental Science Scholarship**

Donors Nels Troelstrup and Jayme Trygstad
When initiated 2013
Basis of award EES Students with a GPA of 3.0 or higher. Must have completed at least 1 year of university coursework toward their program of study with at least 1 full year of coursework yet to complete.
Recipient Cailee Peterson (2019)
Seamus O'Connor (2020)

❖ **Edward Crozier and Caryl Kinkner Crozier Scholarship**

Donors Edward Crozier and Caryl Kinker Crozier
When initiated 2008
Basis of award Selected by NRM in odd numbered years. A student majoring in Wildlife Studies with first preference to a student who demonstrates financial need.
Recipient Jessica Vanderheiden (2019)

❖ **Elvin and Eloys Bjorklund Memorial Scholarship**

Donors Richard N. Bjorklund
When initiated 2000
Basis of award Student in WFS major and have an interest in conservation and participate in related organizations. Preference to a woman who has an interest in a career as a Conservation officer.
Recipient Kyle Woodall (2019)
Kristy Cullinan (2020)

❖ **Geneva Kettering Hogue and Jerome O. Hogue Scholarship in Support of the Jackrabbit Guarantee**

Donors Geneva Kettering Hogue
When initiated 2011
Basis of award South Dakota resident in WFS major. An enthusiastic and dedicated student with a love of the outdoors and appreciation for South Dakota.
Recipient Nicholas Sadler (2019)
Ben Monson (2020)

❖ **Gerald B. Spawn Memorial Scholarship in Wildlife**

Donors Donald Spawn
When initiated 1966
Basis of award Incoming senior student in Wildlife major. Preference to students from South Dakota or adjacent states.
Recipient Nathaniel De Jong (2019)
Kaitlyn Bratberg (2020)

❖ **James and Barbara Jessen Scholarship in Natural Resource Management**

Donors James and Barbara Jessen
When initiated 2012
Basis of award Junior or Senior in NRM, with preference to a student from Iowa graduates
Recipient Cole Anderson (2019)
Brady Dickerson (2020)

❖ **James E.R. Williams Scholarship in Natural Resource Management**

Donors Steve Anderson
When initiated 2016
Basis of award Shall demonstrate financial need and be in good academic standing. Preference to students from Murray County, MN.
Recipient Jaden Groff (2019)
Melissa Kirby (2020)

❖ **Jeffery and Pamela Donahoe Scholarship in the Department of Wildlife and Fisheries Sciences in Support of the Jackrabbit Guarantee**

Donors Jeffery and Pamela Donahoe
When initiated 2010
Basis of award Sophomore or higher level student who qualifies for the Jackrabbit Guarantee and is majoring in WFS
Recipient Brandt Boekhout (2019)
Joshua Schmidt (2020)

❖ **Jennings Upland Endowment in Range Science**

Donors James and Emily Jennings
When initiated 2005
Basis of award Sophomore or higher students majoring in Range Sciences
Recipient Katelin Deneke, Adam Franck, Emily Knutson, Jory Rodgers, Kaycee Szymanski and Ryan Wilen (2019)
Eric Puetz, Kaycee Szymanski, Randi Tivis and Ryan Wilen (2020)

❖ **Jerome Norgren Water & Wildlife Conservation Scholarship**

Donors Jerome R. Norgren Estate
When initiated 2004
Basis of award Student in WFS major
Recipient Cailee Peterson and Logan Simpson (2019)
Maddison Busk and Logan Simpson (2020)

❖ **Kringen Family Scholarship in Ecology**

Donors David Kringen
When initiated 2020
Basis of award A student pursuing studies in the field of ecology or environmental sciences with a preference to students studying aquatic ecology or water resource management.
Recipient Cailee Peterson (2020)

❖ **Lake Campbell Wildlife Club Scholarship, Mound City**

Donors James Kanable
When initiated 1976
Basis of award Junior in WFS and a South Dakota resident. Preference to a student from north-central South Dakota.
Recipient Drake Laverack (2019)
Jenavieve Buechler (2020)

❖ **Larry & Jo Kallemeyn Scholarship in Wildlife & Fisheries Sciences**

Donors Larry and Jo Kallemeyn
When initiated 2005
Basis of award Sophomore or junior in WFS
Recipient Cole Dummermuth (2019)
Melissa Kirby (2020)

❖ **Mabel Adams Eberly Memorial Scholarship**

Donors Mabel Adams Eberly
When initiated 1986
Basis of award Students with interest in Botany
Recipient Cody Kneip (2019)
Kaitlin Schieuer (2020)

❖ **McCook Lake Izaak Walton League Scholarship**

Donors McCook Lake Izaak Walton League
When initiated 1994
Basis of award Junior or senior majoring in WFS. Preference to students from Union County or resident in South Dakota.
Recipient Bailey Biegler, Wyatt Jorgensen and Dean Laverack (2019)
Brandt Boekhout, Wyatt Jorgensen, Dean Laverack and Rylan Webster (2020)

❖ **Paul and Jeanette Vohs Scholarship in Wildlife and Fisheries Sciences**

Donors Paul and Jeanette Vohs
When initiated 2012
Basis of award Junior or senior in Wildlife studies with a cumulative GPA of 3.0 or higher. Preference to students with a career focus in the field of wildlife, especially those interested in birds and/or mammals.
Recipient Jessica Kading (2019)
Jaden Groff (2020)

❖ **Paul E. "Doc" Nordstrom Scholarship in Park Management**

Donors Lea Nordstrom
When initiated 2019
Basis of award Junior or senior Park Management major with a minimum GPA of 2.5. Actively involved in extracurricular activities relating to park management. An active member in the SDSU Park Management Club.
Recipient Rubendall Isaac (2019)
Carter Vogel (2020)

❖ **Rock Hills Ranch Scholarship**

Donors Lyle and Garnet Perman
When initiated 2006
Basis of award Student majoring in Range science
Recipient Eric Puetz (2019)
Kara Fairchild (2020)

❖ **Sioux Falls Chapter Izaak Walton League Scholarship in Wildlife and Fisheries Sciences**

Donors Sioux Falls Chapter Izaak Walton League
When initiated 1959
Basis of award Majoring in WFS and a sophomore or high level student. Preference to students who are South Dakota residents.
Recipient Jessica Vanderheiden (2019)
Kaitlyn Bratberg (2020)

❖ ***smithii* Award in Range Science**

Donors SDSU Range Club
When initiated 1990
Basis of award Outstanding senior who has
shown leadership in Range Club
Recipient Shyanne Seidel (2019)

❖ **South Dakota Conservation Officers' Association Scholarship**

Donors South Dakota Conservation Officers' Association
When initiated 1996
Basis of award Junior or senior in WFS major.
Preference to someone interested
in a law enforcement career.
Recipient Rylan Webster (2019)
Cailee Peterson (2020)

❖ **South Dakota Walleyes Unlimited Scholarship in Wildlife & Fisheries Sciences**

Donors South Dakota Walleyes Unlimited
When initiated 2008
Basis of award Major in WFS with a cumulative
grade point average of 3.0 or higher.
A South Dakota resident in junior or
preferably senior status. Preference
to a student in high financial need.
Recipient Jessica Kading, Hunter Neuman
& Brexton Roth (2019)
Drake Laverack and Braxton
Roth (2020)

❖ **SRM Freshman Scholarship**

Donors South Dakota Section, Society for
Range Management
When initiated 1994
Basis of award Range Science major currently
in the first or second semester
of post-secondary education
Recipient Randi J. Tivis (2019)

❖ **SRM Tex Lewis Memorial Scholarship**

Donors South Dakota Section, Society
for Range Management
When initiated 1986
Basis of award Rising junior or senior students in
Range science with at least a 2.7 grade
point average who have demonstrated
a sincere interest in Range Science
Recipient Kara Fairchild (2019)
Katelin Deneke (2020)

❖ **Stephen M. Zearth Scholarship in Wildlife & Fisheries Sciences in Support
of the Jackrabbit Guarantee**

Donors Stephen Zearth
When initiated 2006
Basis of award Jackrabbit Guarantee awardee
majoring in WFS
Recipient Samuel Schumacher (2019 & 2020)

❖ **Steve Bierle Memorial Scholarship**

Donors Bierle and Pollmann Family
When initiated 2019
Basis of award Student majoring in WFS
Recipient Zachary Koziel (2019 & 2020)

❖ **Streeter Memorial Scholarship in Wildlife & Fisheries**

Donors Streeter Family
When initiated 2001
Basis of award South Dakota resident in WFS major,
with preference to students with an
interest in wildlife habitat preservation
and conservation on private lands.
Must demonstrate high academic and
leadership potential.
Recipient JDalton Flahaven (2019 & 2020)

❖ **The Harry Stoeber Memorial Scholarship**

Donors Carla and Chuck Dieter
When initiated 2015
Basis of award Student in WFS major. Must be in good standing academically.
Recipient Nathaniel De Jong (2019)
Wendy Blickensderfer(2020)

❖ **Thomas Pozarnsky Scholarship in Range**

Donors Dwayne and Mary Breyer
When initiated 2015
Basis of award A resident of SD majoring in Range Science with a cumulative GPA of 2.5 or higher
Recipient Erik Gutenkauf (2020)

❖ **Ward Miller Scholarship Fund**

Donors Friends and Family of Dr. Ward Miller
When initiated 2012
Basis of award Sophomore or junior who has demonstrated scholastic achievement, with preference to majors with interest in botanical sciences
Recipient Jenna Schauer (2019 & 2020)

❖ **Wilbur Allen Scholarship in Wildlife & Fisheries Sciences**

Donors Beverly Allen
When initiated 1984
Basis of award Students majoring in WFS
Recipient Wyatt Hamer, Jay Holm, Taysa Hutmacher, Riley Mounsdon, Jack Niedringhaus, Cailee Peterson, Jordan Roman, Joshua Schmidt, Logan Simpson, Jessica Venderheiden and Cole Zimmerman (2019)
Brandt Boekhout, Preston Carson, Wyatt Hamer, Jay Holm, Riley Mounsdon, Jack Niedringhaus, Jordan Roman, Jessica Venderheiden and Carter Vogel (2020)

❖ 29-90 Sportsman's Club Scholarship

Donors 29-90 Sportmen's Club
When initiated 2013
Basis of award Student entering Junior or Senior year
with a good academic record from
Minnehaha or surrounding counties
Recipient Tanner Pietz (2019)
Jessica Kading (2020)

FISHBACK HONORS COLLEGE STUDENTS ACKNOWLEDGEMENT

Fall 2019

- Wendy Blickensderfer (WFS)
- Kiah Gray (CPPM)
- Jaden Groff (EES)
- Noah Hainy (WFS)
- Jay Holm (WFS)
- Rachel Jensen (EES)
- Jessica Kading (WFS)
- Emma Millsap (WFS)
- Lindsay Muller (EES)
- Kaitlin Schieuer (EES)
- Sadie Tornberg (EES)
- Carter Vogel (CPPM)
- Lorna Wright (WFS)

Fall 2020

- Bethany Bespoyasny (WFS)
- Wendy Blickensderfer (WFS)
- Jaden Groff (EES)/Spanish
- Noah Hainy (WFS)
- Jay Holm (WFS)
- Jessica Kading (WFS)
- Emma Millsap (WFS)
- Lindsay Muller (EES)
- Kaitlin Schieuer (EES)
- Evan Taipala (EES)
- Sadie Tornberg (EES)
- Carter Vogel (CPPM)
- Max White (EES)
- Tyler Williams (EES)

GRADUATE AWARDS

❖ Outstanding Biological Science Graduate Student Award (MS)

Donors Department of Natural Resource Management
When initiated 2012
Basis of award Graduate student in the Biological
Sciences MS program and have an
advisor from the NRM who is either
a Range Science or an EES advisor
Recipient Rebecca Kolstrom, Jessica Richert
and Lucas Zilverberg (2019)
Sarah Herzog and Kaj Lynoe (2020)

❖ **Outstanding Grassland Science Graduate Student Award**

Donors South Dakota Grassland Coalition
When initiated 2014
Basis of award Graduate student in the Biological Sciences MS or PhD program and have an advisor from the NRM who is either a Range Science or an EES advisor
Recipient Jameson Brennan (2019)
Abigail Blanchard (2020)

❖ **Great Plains Fishery Workers Association Scholarship Award**

Donors Great Plains Fishery Workers Association
When initiated 1985
Basis of award Students in good standing in the Fisheries Science Curriculum
Recipient Joseph Mrnak (2019)
Austin Galinat (2020)

❖ **Lloyd & Alice Fredrickson Memorial Scholarship in Wildlife and Fisheries Graduate Studies**

Donors Fredrickson Family
When initiated 2002
Basis of award Graduate students pursuing a MS or PhD in wildlife and fisheries in good academic standing & demonstrate promise to the profession. Candidates for this award should be active in related professional activities and organization.
Recipient Seth Fopma and Samantha Fino (2019)

❖ **Robert A. Klumb HAMMS Award (Habitat, Aquatics, and Management of the Missouri River System)**

Donors Steve Chipps
When initiated 2015
Basis of award Outstanding graduate student in fisheries program. The award recognizes outstanding contributions in the areas of riverine fishes research, native species management, and(or) the conservation of threatened and endangered fishes.
Recipient Nicholas Kludt (2019)
Cade Lyon (2020)

❖ **Waterfowl Specialty - Gay Simpson Award**

Donors Central Flyway Council
When initiated 1990
Basis of award Graduate student conducting waterfowl or wetland related research
Recipient Fred Oslund (2019)
Will Gallman (2020)

❖ **Outstanding Wildlife MS Student Award**

Donors Department of Natural Resource Management
When initiated 1985
Basis of award Graduate student in WFS MS program within the Wildlife Specialization and have an advisor from NRM who is wildlife-oriented
Recipient Cynthia Anchor (2019)

❖ **David W. Willis Fisheries Research Endowment**

Donors Willis Family
When initiated 2016
Basis of award Fisheries graduate student in good academic standing within NRM. Be involved in or have immediate plans to commence a study focused in fish or fisheries research. Preference to an active member of AFS or organizations that are focused on environmental conservation issues.
Recipient Travis Schaeffer (2020)

❖ ***A special THANK YOU to all our DONORS that have made it possible for our NRM students to achieve their academic goals!***