

South Dakota State University  
**Open PRAIRIE: Open Public Research Access Institutional  
Repository and Information Exchange**

---

South Dakota County Profiles: 2007

SDSU Census Data Center

---

9-27-2007

## Gregory County

W. Trevor Brooks  
*South Dakota State University*

Follow this and additional works at: [https://openprairie.sdstate.edu/census\\_data\\_county-profiles](https://openprairie.sdstate.edu/census_data_county-profiles)

---

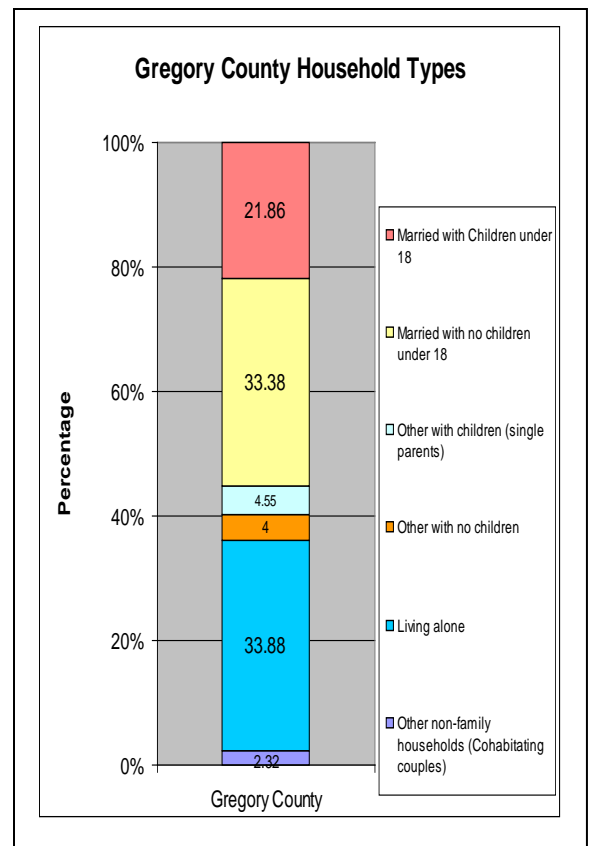
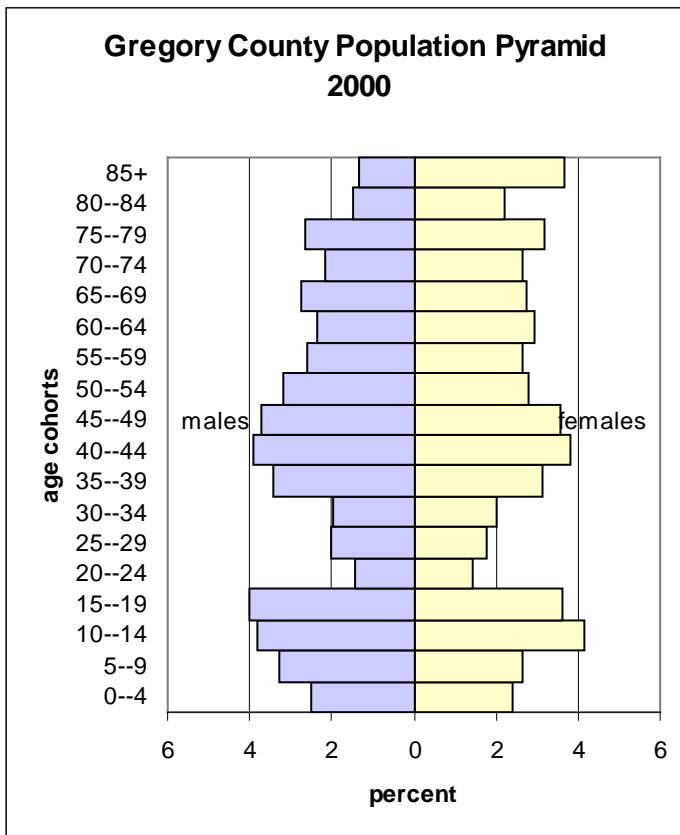
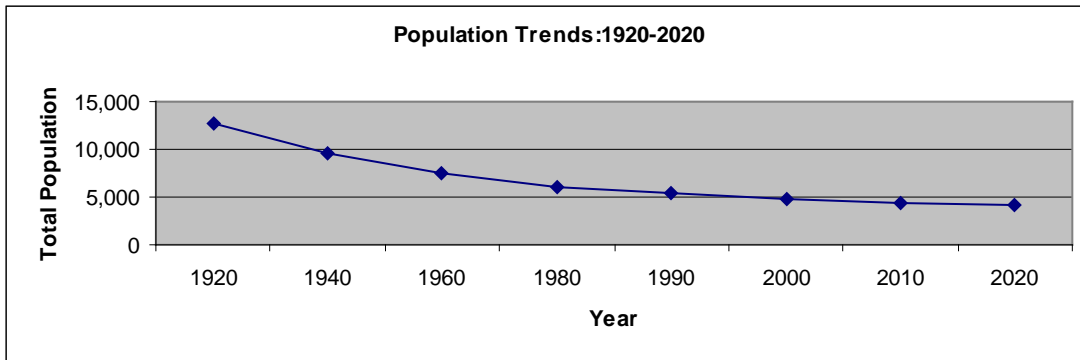
### Recommended Citation

Brooks, W. Trevor, "Gregory County" (2007). *South Dakota County Profiles: 2007*. 26.  
[https://openprairie.sdstate.edu/census\\_data\\_county-profiles/26](https://openprairie.sdstate.edu/census_data_county-profiles/26)

This Other is brought to you for free and open access by the SDSU Census Data Center at Open PRAIRIE: Open Public Research Access Institutional Repository and Information Exchange. It has been accepted for inclusion in South Dakota County Profiles: 2007 by an authorized administrator of Open PRAIRIE: Open Public Research Access Institutional Repository and Information Exchange. For more information, please contact [michael.biondo@sdstate.edu](mailto:michael.biondo@sdstate.edu).

# Gregory County Population Trends

1920	1940	1960	1980	1990	2000	2010	2020
12,700	9,554	7,399	6,015	5,359	4,792	4,366	4,078

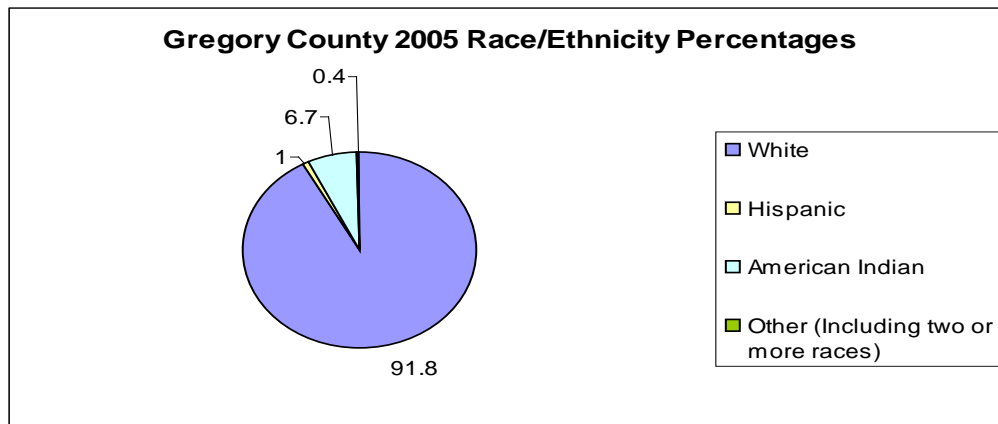


<b>Where People Live in 2000 (by percent)</b>				
	<b>South Dakota</b>	<b>Gregory</b>	<b>Charles Mix</b>	<b>Tripp</b>
Urban	51.92	0	0	48.69
Rural-Farm	7.72	19.14	15.60	15.01
Rural-Non farm	40.36	80.86	84.40	36.30

### Gregory County Population Highlights

- From 1990 to 2000, Gregory County **lost 567 residents** which was a **10.6% decrease** in its total population.
- From 1990 to 2000, Gregory County **lost 376 residents to out-migration** which was **7.0% decrease** in its total population.
- **24.29%** of Gregory County's population is **under the age of 18** while **24.81% is aged 65+**.
- Gregory County's **median age is 44.3**. This is older than both Charles Mix and Tripp counties.
- Gregory County's **sex ratio is 94.48**, which means that there are about 94 males for every 100 females. This is lower than both Charles Mix and Tripp counties. From the population pyramid we can tell that females clearly outlive males.
- Gregory County's **fertility rate is 54.0 births** for every 1,000 women aged 15-44. This is lower than both Charles Mix and Tripp counties.
- From the population pyramid we can see that Gregory County has a high out-migration of young adults aged 20-34.

### Race/Ethnicity in Gregory County



### Gregory County Agriculture in 2002

- Gregory County had **587 farms** which was a **3.1% decrease** from 1997.
- Gregory County's **average farm size was 639 acres**. This was smaller than both Charles Mix and Tripp counties.
- Gregory County's **average net farm income was \$8,795**. This was much lower than Charles Mix and Tripp counties.

### Gregory County Economics in 2000

- Gregory County's **per capita income was \$13,656**. This was higher than Charles Mix County and comparable with Tripp County.
- Gregory County's **median household income was \$22,732**. This was lower than both Charles Mix and Tripp counties.
- **12.0%** of Gregory County's population aged 25 and older had **completed a B.S. degree**. This is lower than both Charles Mix and Tripp counties.
- **20.06%** of Gregory County's population **is living at or below the official poverty line**. This compares with 13.18% for the state of South Dakota, 26.88% for Charles Mix, and 27.79% for Tripp.
- **34.27%** of Gregory County's children under the age of 5 are **living at or below the official poverty line**. This compares with 19.77% for the state of South Dakota, 13.45% for Charles Mix, and 27.79% for Tripp.
- South Dakota's Labor Market Information Center reports that Gregory County **ranks 3d** in the state of South Dakota for **percentage of low-paying jobs** (under \$6.15/hour).
- Only **4.2%** of workers in Gregory County **commute into work from another county**. This is lower than any other surrounding county (Jones, Lyman, Mellette, Todd, and Tripp).

### Gregory County's Employment by Industry

Top Industries (in terms of numbers)	Percentage	Number
<b>Agriculture</b>	24.02	525
<b>Educational, health, and social services</b>	18.25	399
<b>Retail</b>	12.26	268
<b>Construction</b>	8.87	194
<b>Public Administration</b>	3.29	72
<b>Manufacturing</b>	1.88	41
<b>Total Employed</b>		2,186

## **Income Distribution**

	<b>South Dakota</b>	<b>Gregory</b>	<b>Charles Mix</b>	<b>Tripp</b>
Total:	290,336	2,017	3,329	2,528
Less than \$10,000	30,881	382	632	479
\$10,000 to \$14,999	22,421	255	344	239
\$15,000 to \$19,999	22,190	252	297	212
\$20,000 to \$24,999	24,633	183	319	218
\$25,000 to \$29,999	22,190	159	315	152
\$30,000 to \$34,999	21,694	140	286	209
\$35,000 to \$39,999	19,408	122	148	166
\$40,000 to \$44,999	19,077	111	175	164
\$45,000 to \$49,999	16,675	58	153	125
\$50,000 to \$59,999	27,809	136	274	216
\$60,000 to \$74,999	26,008	89	203	159
\$75,000 to \$99,999	20,150	88	120	104
\$100,000 to \$124,999	7,597	17	32	12
\$125,000 to \$149,999	3,493	7	16	29
\$150,000 to \$199,999	2,872	4	13	27
\$200,000 or more	3,238	14	2	17

### **Data compiled by:**

W. Trevor Brooks

Rural Life and Census Data Center

South Dakota State University

### **Sources:**

South Dakota Data Center (Vermillion, SD)

South Dakota Labor Market

U.S. Census of Agriculture (2002)

U.S. Census Bureau (2000)