

South Dakota State University
**Open PRAIRIE: Open Public Research Access Institutional
Repository and Information Exchange**

South Dakota County Profiles: 2007

SDSU Census Data Center

9-27-2007

Jerauld County

W. Trevor Brooks
South Dakota State University

Follow this and additional works at: https://openprairie.sdstate.edu/census_data_county-profiles

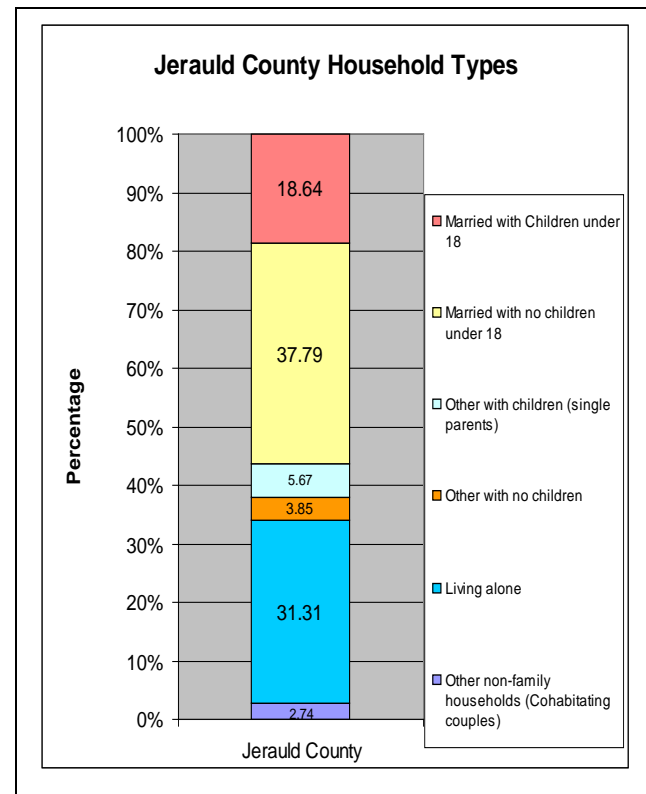
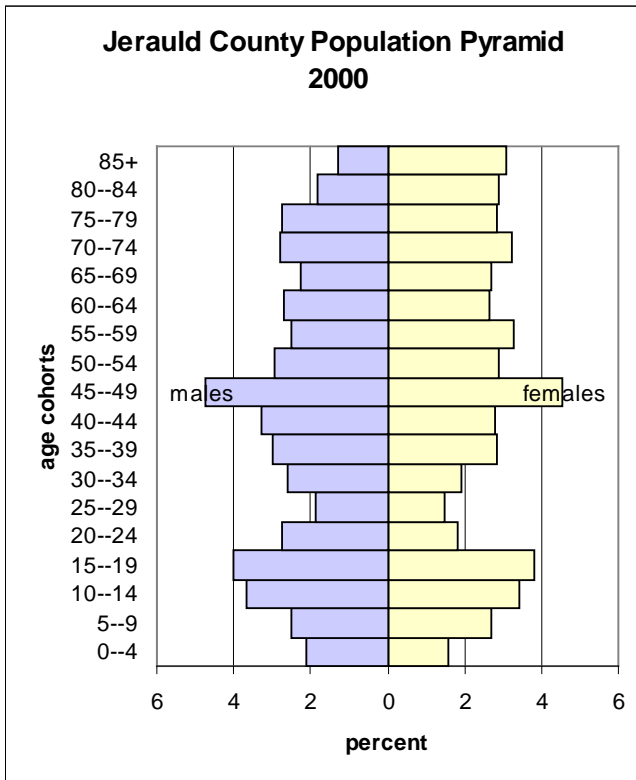
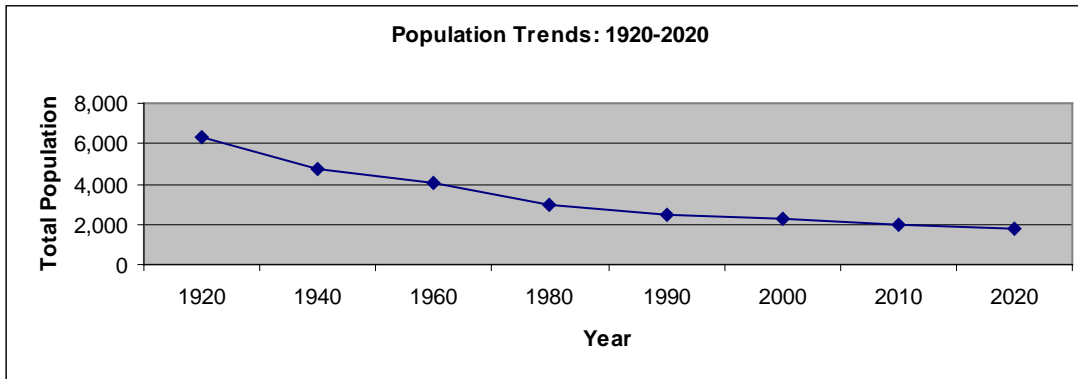
Recommended Citation

Brooks, W. Trevor, "Jerauld County" (2007). *South Dakota County Profiles: 2007*. 36.
https://openprairie.sdstate.edu/census_data_county-profiles/36

This Other is brought to you for free and open access by the SDSU Census Data Center at Open PRAIRIE: Open Public Research Access Institutional Repository and Information Exchange. It has been accepted for inclusion in South Dakota County Profiles: 2007 by an authorized administrator of Open PRAIRIE: Open Public Research Access Institutional Repository and Information Exchange. For more information, please contact michael.biondo@sdstate.edu.

Jerauld County Population Trends

1920	1940	1960	1980	1990	2000	2010	2020
6,338	4,752	4,048	2,929	2,425	2,295	2,007	1,800

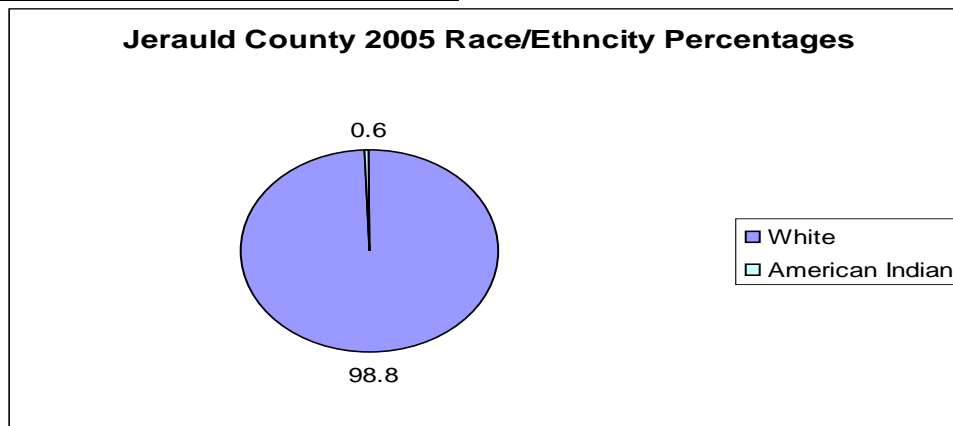


Where People Live in 2000 (by percent)				
	South Dakota	Jerauld	Aurora	Sanborn
Urban	51.92	0	0	0
Rural-Farm	7.72	20.35	26.78	28.45
Rural-Non farm	40.36	79.65	73.22	71.55

Jerauld County Population Highlights

- From 1990 to 2000, Jerauld County **lost 130 residents** which was a **5.4% decrease** in its total population.
- From 1990 to 2000, Jerauld County **lost 31 residents to out-migration**. This was a **1.3% decrease** in its total population.
- **21.43%** of Jerauld County's population is **under the age of 18** while **25.62%** is aged **65+**.
- The **median age** in Jerauld County is **46.3**. This is older than both Aurora and Sanborn counties. The median age would probably be older if the 1 Hutterite colony was not in Jerauld County.
- Jerauld County's **sex ratio is 98.36**, meaning there are about 98 males for every 100 females. This is lower than both Aurora and Sanborn counties.
- The **fertility rate** in Jerauld County is **68.5 births** for every 1,000 females aged 15-44. This is higher than both Aurora and Sanborn counties.

Race/Ethnicity in Jerauld County



Jerauld County's Agriculture in 2002

- Jerauld County had **272 farms**, which was a **2.2% decrease** from 1997.
- Jerauld County's **average farm size was 1,237 acres**. This is larger than both Aurora and Sanborn counties.
- Jerauld County's **average net farm income was \$27,868**. This is higher than Aurora, but lower than Sanborn.

Jerauld County Economics in 2000

- Jerauld County's **per capita income was \$16,856**. This is higher than Aurora, but lower than Sanborn.
- Jerauld County's **median household income was \$30,690**. This was higher than Aurora, but lower than Sanborn.
- **12.3%** of Jerauld County's population aged 25+ had **earned a B.S. degree or higher**. This is lower than both Aurora and Sanborn counties.
- **20.62%** of Jerauld County's population is **living at or below the official poverty line**. This compares with 13.18% for the state of South Dakota, 11.44% for Aurora County and 14.92% for Sanborn County
- **45.00%** of Jerauld County's **children under the age of 5** are **living at or below the official poverty line**. This compares with 19.77% for the state of South Dakota, 18.34% for Aurora County, and 26.43% for Sanborn County.
- **26.9%** of workers in Jerauld County **commute in from another county**. This is a greater percentage than both Aurora and Sanborn counties.

Top Industries (in terms of numbers)	Percentage	Number
Agriculture	22.81	253
Educational, Health, and Social Services	19.48	216
Retail	13.53	150
Manufacturing	9.74	108
Construction	6.58	73
Public Administration	3.88	43
Total Employed		1,109

Income Distribution

	South Dakota	Jerauld	Aurora	Brule
Total:	290,336	986	1,174	1,035
Less than				
\$10,000	30,881	159	133	122
\$10,000 to				
\$14,999	22,421	113	107	79
\$15,000 to				
\$19,999	22,190	82	132	106
\$20,000 to				
\$24,999	24,633	50	102	95
\$25,000 to				
\$29,999	22,190	81	117	67
\$30,000 to				
\$34,999	21,694	89	88	68
\$35,000 to				
\$39,999	19,408	70	80	111
\$40,000 to				
\$44,999	19,077	65	86	82
\$45,000 to				
\$49,999	16,675	38	81	49
\$50,000 to				
\$59,999	27,809	98	80	88
\$60,000 to				
\$74,999	26,008	63	92	55
\$75,000 to				
\$99,999	20,150	39	49	56
\$100,000 to				
\$124,999	7,597	14	21	17
\$125,000 to				
\$149,999	3,493	11	0	10
\$150,000 to				
\$199,999	2,872	6	2	8
\$200,000 or more	3,238	8	4	22

Data compiled by:

W. Trevor Brooks

Rural Life and Census Data Center

South Dakota State University

Sources:

South Dakota Data Center (Vermillion, SD)

South Dakota Labor Market

U.S. Census of Agriculture (2002)

U.S. Census Bureau (2000)