

South Dakota State University

Open PRAIRIE: Open Public Research Access Institutional Repository and Information Exchange

South Dakota Art Museum Newsletters and Publications

Fall 2001

South Dakota Art Museum News, Fall 2001

South Dakota Art Museum

Follow this and additional works at: https://openprairie.sdstate.edu/sdam_news

Harvey Dunn

WAR WORKS



The much-anticipated exhibition, *Harvey Dunn, War Works: Art from the American Expeditionary Forces* will be featured at the South Dakota Art Museum from November 8, 2001, through March 25, 2002. The show is the first in a four-part series of exhibitions that will explore different facets of South Dakota's premier artist, Harvey Dunn.

An opening reception is scheduled for Saturday, November 10, 2001, from 4:00 to 7:00 p.m. Speaking at the reception will be well-known South Dakota author and Harvey Dunn biographer, Robert Karolevitz from Mission Hill, South Dakota; and Renee Klish, curator of the Army Art Collection at the United States Army Center of Military History in Washington, D.C. The speakers will begin at 5:30 p.m. in the South Dakota Art Museum auditorium.

On Veteran's Day, Sunday, November 11, at 1:00 p.m., the Museum will host a screening of the documentary *They Drew Fire: Combat Artists of World War II*. Following the screening, Renee Klish will lead a discussion panel including Robert Karolevitz, and Viet Nam War combat artists, James Pollock of Pierre and Stephen Randall of Sioux Falls, South Dakota.

The exhibition focuses on Dunn's work during World War I. Harvey Dunn was selected as one of the eight artists enlisted by the American Expeditionary Forces (A.E.F.) to interpret the war through their artwork. On March 7, 1918, just one day before his 34th birthday, Dunn

Above: *Attack*, oil on canvas by Harvey Dunn



Dunn WAR WORKS

entered the service. He was commissioned as a captain and sent to the battlefields of France.

Dunn's goal was to portray the reality of war, "the shock and loss and bitterness and blood of it." Using a portable sketch box fashioned like a scroll, he recorded the brutality of the war onto paper with charcoal, crayon, pastels, watercolor and oil paint.

It was Dunn's hope to remain under commission to the A.E.F. for several years after the war. He hoped to complete finished paintings documenting the devastation and carnage of World War I; however, it was not to be. Harvey Dunn was discharged in April of 1919, before he could accomplish that monumental task.

The South Dakota Art Museum has procured over twenty of Dunn's field sketches and paintings through a loan

from the National Museum of American History at the Smithsonian Institution in Washington, D.C. The works will be incorporated into this four-part series over a period of three years.

The other exhibitions in the series are:

- *Harvey Dunn, the Teacher*, April 5, 2002—August 20, 2002
- *Harvey Dunn, the Illustrator*, August 30, 2002—January 20, 2003
- *Harvey Dunn, Feminine Images*, January 30, 2003—June 20, 2003

This loan and exhibition was made possible through a grant from the Museum Loan Network (MLN)—the first comprehensive national collection-sharing program which stimulates, facilitates and funds long-term loans of objects of cultural heritage among U.S. institutions to enhance museums' permanent installations. The MLN's program consists of two complementary



Street Fighting, c.1918, oil on canvas, Harvey Dunn

components: the MLN grant programs, which help realize loans between institutions, and the MLN Directory, an illustrated online database that includes objects available for long-term loan by museums around the country. Launched in 1995, the MLN is funded by the John S. and James L. Knight foundation and the Pew Charitable Trusts, which conceived and initiated the program, and is administered by the Massachusetts Institute of Technology's Office of the Arts.

Paul Goble *Gift*

The South Dakota Art Museum is honored to be the recipient of a second generous gift of artwork from the internationally known author and illustrator of children's books, Paul Goble. He has donated 106 illustrations from his recent books to the Paul Goble Collection at the Museum. These original watercolor paintings were created to illustrate stories that retell Native American legends and traditions in Goble's books. Images from the books *Love Flute*, *Legend of the White Buffalo Woman*, *Return of the Buffaloes*, *Adopted by Eagles*, *Iktomi and the Cyote*, *Iktomi Loses His Eyes*, and *Remaking the Earth* will now be available to be shown in the Museum

gallery space that is devoted to Paul Goble's work.

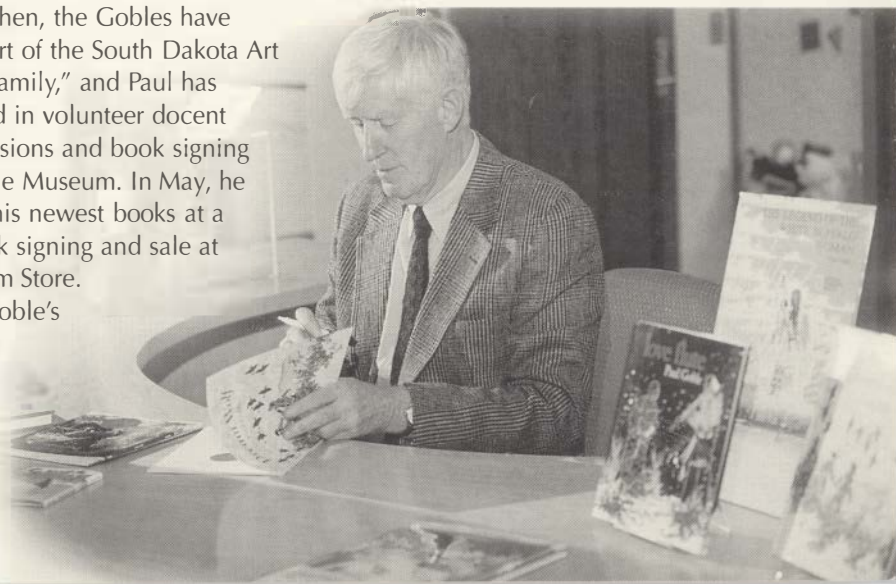
Paul Goble's commitment to the South Dakota Art Museum began in 1995 when he was encouraged by his wife, Janet, and her former SDSU professor, Dr. Larry Stine, to consider placing his original artwork at the Museum. It was Goble's desire to see his work preserved and to make it available for public viewing. At that time, Goble donated all of his original works to date to the Museum's care.

Since then, the Gobles have become part of the South Dakota Art Museum "family," and Paul has participated in volunteer docent training sessions and book signing events at the Museum. In May, he presented his newest books at a public book signing and sale at the Museum Store.

Paul Goble's books have won praise from the

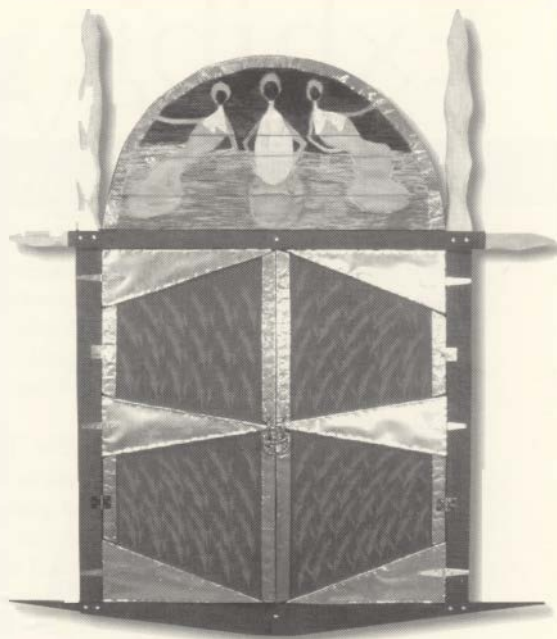
American Library Association, the National Council of Social Studies, the International Reading Association, and the Children's Book Council. His books have also been chosen for the Library of Congress' Children's Book of the Year award and as a Reading Rainbow selection by Public Broadcasting. Goble was awarded the prestigious Caldecott Medal in 1978 for the most distinguished children's picture book for his book, *The Girl Who Loved Wild Horses*.

Paul Goble signs his books at the SDAM.



South Dakota Artist Series

*funded by
SD Arts
Council
Grant*



The South Dakota Art Museum has recently been awarded a thirteen thousand-dollar Arts Leadership Grant from the South Dakota Arts Council to assist in the development and continuation of the South Dakota Artist Series.

When the South Dakota Art Museum reopened in December 2000, the *South Dakota Artist Series* was a featured exhibition. The series is intended to highlight new and innovative South Dakota artists, as well as the accomplished and experienced artists of the state whose work is on the cutting edge of the contemporary art scene. The series will continue over a period of at least two years.

Museum director Lynn Verschoor and curator of exhibitions Tilly Laskey have traveled throughout South Dakota in an effort to meet artists and to learn more about the artwork produced in this state. "There is amazing work being done here," said Laskey. "Considering the relative isolation that most artists in South Dakota encounter, it's a credit to their creativity and innovation that South Dakota artwork would fit into any high quality art museum across the nation."

The current exhibition, *South Dakota Artist Series: James Graham and Tom Rickers* continues through September 17, 2001. Graham is a painter from Yankton, South Dakota. The use of organic form and vivid color in his paintings is based on his philosophy that "the elements of design—line, shape, color, value, and texture—form the aboriginal language of nature, and that the purest expression of these elements is the abstract." Graham draws inspiration from nature to create his nonobjective abstract paintings.

Tom Rickers is a Sioux Falls, South Dakota, sculpture artist and educator who recently relocated to Amherst, Massachusetts. He has exhibited extensively in the Midwest and has been a respected member of the South Dakota arts community. Rickers explores form, balance, and linear movement using mixed media including wood, metal, stone, and a variety of other material in his artwork.

The next South Dakota Artist Series exhibition opens on September 25 featuring Linda Shere of Galena, Nancy Losacker of Vermillion, Jean Selvy-Wyss of Rapid City, and Camille Riner of Custer. A gallery reception is scheduled for Thursday, October 4 from 4:30 to 7:00 p.m. at the Museum. This event is free and open to the public.

Above: *March Horse Diaries #5*, Linda Shere

Burden, 2000, Mixed Media, Tom Rickers



Three Women and Wheat, 1996,
Nancy Losacker

Ring-Around, tapestry, Jean Selvy-Wyss

Old Growth, oil on canvas, James Graham

Exhibit

Schedule

Art on Paper

Continues through October 1, 2001

This outstanding exhibition of antiquarian prints from a private collection features several old master printmakers. Printed currency from the civil war era, fascinating examples of early European maps, and a series of maps detailing the development of South Dakota are also included.

Multicultural Synthesis of Plains Landscape

Continues through October 22, 2001

This exhibition features Native American art along with Harvey Dunn paintings in an effort to contrast the lifestyles and worldviews of two different cultures during approximately the same time period.

Men of the Cloth

September 6, 2001-January 3, 2002

This exhibition celebrates the male fiber artist as it explores issues of gender and stereotype. Find traditional fiber techniques as well as connective devices like staples and aluminum rings that you may not have thought of as fiber.

Mitake Oyasin, Paul Goble's Animal Illustrations

September 16, 2001-February 4, 2002

Taking its title from the Native American phrase "Mitake Oyasin" meaning "we are all one," this exhibition presents animal illustrations from award-winning author and artist, Paul Goble.

South Dakota Artist Series: Linda Shere, Nancy Losaker, Jean Selvy-Wyss, Camille Riner

September 25, 2001-December 1, 2001

This exhibition features four South Dakota women and their unique art forms. The gallery features fiber art, mixed-media sculpture, paintings, and prints on handmade paper.

Marghab Linens: The War Years

September 29, 2001-January 27, 2002

This linen exhibition explores the issues faced by an international company such as Marghab Linens, Ltd. operating during World War II.

Of Selvege and Salvage: Images of Belief

Arthur Amiotte Collage and John Moler Photography

October 15, 2001-January 15, 2002

This is a collaborative exhibit of photographs and collages representing the influence of the Church on reservation life during the first half of the 20th century.

Father Eugene Buechel Photographs

October 15, 2001-January 15, 2002

This exhibition features photographs taken by Father Buechel that document reservation life in the early 1900's. He was a Jesuit missionary priest at the St. Francis Mission on the Rosebud Indian Reservation of South Dakota during 1902-04 and 1907-54.

Harvey Dunn, War Works: Art From the American Expeditionary Forces

November 8, 2001-March 25, 2002

Works from the National Museum of American History at the Smithsonian Institution combine with works from the Museum's collection to depict Dunn's view of World War I.

Native American Warriors

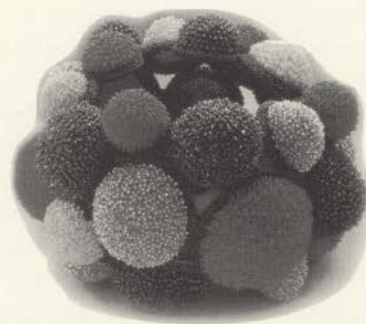
November 10, 2001-June 6, 2002

This exhibition explores the concept of traditional Native American Warrior Societies and the fierce patriotism for the United States that developed from these beliefs.

Bubble Bowl, 1996

beadwork, David Chatt

Men of Cloth



Marriage of St. Catherine

H. Wierix, Collection of David and Lily Cole, *Art on Paper*



Moses Bulltail and wife in Indian regalia, 1931,

photograph, Father Eugene Buechel
Gift of St. Francis Mission in memory of Les Helgeland, Father Eugene Buechel Photographs



Asia, 1620, antiquarian map, Gerard Mercator, collection of David and Lily Cole, Art on Paper

The Seventies and Beyond: Art Movements in South Dakota
January 11, 2002-July 15, 2002
Gleaned from the Museum's permanent collection, this exhibition examines geometric abstraction, minimalism, realism, fluxus, pop, and post modern art movements.

Jerry Ross Barrish
January 21, 2002-June 24, 2002
Combining wit with the human condition, Barrish strives to "enrich the quality of life through humor or beauty." His found object assemblages are created from recycled industrial castoffs and debris (plastic pipes, tubes, nozzles, balls, buoys, and brushes).



Lakota beaded deerhide pouch, gift of Reverend and Mrs. Frank M. Thorburn, Native American Warriors

4/5 Asian Equation, tapestry, Archie Brennan, Men of the Cloth



Different Worlds, collage, Arthur Amiotte, Of Selvedge and Salvage: Images of Belief



Found Object Assemblage, Jerry Ross Barrish

Events Calendar

AUGUST

"Renaissance: Birth and Rebirth"

Slide Lecture

Thursday, August 30, 7:00 p.m.
South Dakota Art Museum Auditorium
Dr. April Brooks, Associate Professor of History

SEPTEMBER

Men of the Cloth

Opening Reception

Thursday, September 6, 4:30-7:00 p.m.
South Dakota Art Museum Gallery
Gallery Talk by South Dakota Art Museum director, Lynn Verschoor, at 5:30 p.m.

"Maps: A Way of Organizing Wonder"

Slide Lecture

Thursday, September 13, 7:00 p.m.
South Dakota Art Museum Auditorium
Dr. Charles "Fritz" Gritzner, Distinguished Professor of Geography

Kids! Art on Paper Workshop-Session I

Wednesday, September 19, 2:30-4:30 p.m.
South Dakota Art Museum Multipurpose Room
\$20 class fee for 2 sessions, Ages 8-12 yrs, includes materials, pre-register by September 12, Gallery Tour & Paper Making, 688-5423

"The David and Lily Cole Print Collection: A Lecture of Appreciation"

Slide Lecture

Thursday, September 20, 7:00 p.m.
South Dakota Art Museum Auditorium
Dr. Norman Gambill, Professor and Head of the Department of Visual Arts

South Dakota Art Museum Volunteer Guild Meeting

Tuesday, September 25
South Dakota Art Museum Auditorium
9:30 a.m. coffee, 10:00 a.m. meeting & program
"The Beauty of Poland," by South Dakota Art Museum Director, Lynn Verschoor

Kids! Art on Paper Workshop-Session II

Wednesday, September 26, 2:30-4:30 p.m.
South Dakota Art Museum Multipurpose Room
Ages 8-12 yrs, pre-register by September 12, Printing on paper made during Session I, 688-5423

Northern Plains Tribal Arts Lecture

Thursday, September 27, 7:00 p.m.
South Dakota Art Museum Auditorium
Bently Sprang, Independent Artist, MFA, University of Wisconsin-Madison

CONTINUED NEXT PAGE

Events *Calendar continued*

"The Elements of Beading" Workshop

Friday, September 28, 3:00-6:00 p.m.
South Dakota Art Museum
Multipurpose Room
\$30 class fee plus materials,
pre-register by September 21, 688-5423
Leslie Granbeck, beading instructor from
"The Bead Monkey" in Minneapolis, MN

"The Elements of Beading" Workshop

Saturday, September 29, 9:00 a.m.-12:00
noon, South Dakota Art Museum
Multipurpose Room
\$30 class fee plus materials,
pre-register by September 21, 688-5423
Leslie Granbeck, beading instructor from
"The Bead Monkey" in Minneapolis, MN

"Fiesta Necklace" Beading Workshop

Saturday, September 29, 1:00-4:00 p.m.,
South Dakota Art Museum
Multipurpose Room
\$30 class fee plus materials,
pre-register by September 21, 688-5423
Leslie Granbeck, beading instructor from
"The Bead Monkey" in Minneapolis, MN

OCTOBER

**South Dakota Artist Series: Linda Shere,
Nancy Losacker, Jean Selvy-Wyss,
Camille Riner**

Gallery Reception

Thursday, October 4, 4:30-7:00 p.m.
South Dakota Art Museum Gallery
Artist Gallery Talk 5:30 p.m.

Dakota Reader Performance

Thursday, October 4, 7:00 p.m.
South Dakota Art Museum Auditorium
Admission \$3.50

Film Series

Thursday, October 11, 7:00 p.m.
South Dakota Art Museum Auditorium

Kids! Fiber Art Workshop

Wednesday, October 17, 2:30-4:30 p.m.,
South Dakota Art Museum Multipurpose
Room, ages 8-12 years
\$12 class fee, includes materials,
pre-register by October 10, 688-5423
Gallery Tour, Textile Printing

Of Selvedge and Salvage: Images of Belief Arthur Amiotte Collages and John Moler Photography

Opening Reception

Thursday, October 18, 4:30-7:00 p.m.
South Dakota Art Museum Gallery
Slide lecture by Arthur Amiotte at 5:30,
South Dakota Art Museum Auditorium

Weaving Workshop with internationally- recognized weaver, Grete Bodogaard

October 19-21, South Dakota Art Museum
Multipurpose Room
\$175 class fee includes materials; looms
available for rent (\$10) or purchase (\$25)
Pre-register by October 5, 688-5423

South Dakota Art Museum Volunteer Guild Meeting

Tuesday, October 23
South Dakota Art Museum Auditorium
9:30 a.m. coffee, 10:00 a.m. meeting &
program "Native American Collection"
by Larry Ness, Yankton, SD

The Best Aliens are the Ones Only You Can See: Seventy Years of Science Fiction on the Radio

Dakota Reader
Thursday, October 25, 7:00 p.m.
South Dakota Art Museum Auditorium

NOVEMBER

Film Series

Thursday, November 1, 7:00 p.m.
South Dakota Art Museum Auditorium

Film Series

Thursday, November 8, 7:00 p.m.
South Dakota Art Museum Auditorium

Harvey Dunn, War Works: Art from the American Expeditionary Forces, Opening Reception

Saturday, November 10, 4:00-7:00 p.m.,
South Dakota Art Museum Gallery and
Auditorium
Speakers at 5:30 p.m.: Robert Karolevitz of
Mission Hill, S.D., Harvey Dunn biographer,
and Renee Klish, Curator of the Army Art

Collection at the United States Army Center
of Military History in Washington, D.C.

Screening of the documentary *They Drew Fire, Combat Artists of World War II*

Sunday, November 11, 1:00 p.m., South
Dakota Art Museum Auditorium
Panel discussion following film led by Renee
Klish, Curator of the Army Art Collection at
the United States Army Center of Military
History in Washington, D.C. and including
Dunn biographer, Robert Karolevitz of
Mission Hill, S.D., and Viet Nam War combat
artists, Stephen Randall of Sioux Falls, S.D.
and James Pollock of Pierre, S.D.

Film Series

Thursday, November 15, 7:00 p.m.
South Dakota Art Museum Auditorium

South Dakota Art Museum Volunteer Guild Meeting

Tuesday, November 27
South Dakota Art Museum Auditorium
9:30 a.m. coffee, 10:00 a.m.
meeting & program

Reservation Missions Lecture

Thursday, November 29, 7:00 p.m.
South Dakota Art Museum Auditorium
Dr. Ruth Alexander, Professor Emerita, English

DECEMBER

South Dakota Art Museum Volunteer Guild Christmas Party

Tuesday, December 4, 10:00 a.m.
Brookings Community Cultural Center
"Festival of Trees"

Thank You

Guild Support

A big THANK YOU goes out to members of the South Dakota Art Museum Volunteer Guild. At the appeal of Museum Board of Trustees member, Diane Anderson, 30 Guild members donated funds to help procure furnishings for the Museum Store. Gifts totalling \$6,710 purchased over half of the necessary fixtures for the Store display and office area. Thanks to our Volunteer Guild members for this extraordinary demonstration of support.



Workshops

In conjunction with current exhibitions, the South Dakota Art Museum will host several workshops both for children and adults that deal with different aspects of the arts. All classes and workshops are held in the South Dakota Art Museum Multipurpose Room, and require pre-registration and pre-payment. Call the Museum Office at 688-5423 for information.

Adult Beading Workshops by Leslie Granbeck

On September 28 and 29, Leslie Granbeck, a beading instructor from "The Bead Monkey" stores in Edina and St. Paul, Minnesota, will be at the Museum to teach basic and intermediate beading techniques. "The Elements of Beading" may be your first class, but definitely not your last. If you want to learn to make jewelry, and you want to do it right, this is the class for you. Techniques for making necklaces, bracelets and earrings are covered. The workshop will be offered on Friday, September 28, from 3:00 to 6:00 p.m. and again on Saturday, September 29, from 9:00 a.m. to 12:00 noon.

For those who wish to take their beading knowledge a step further, Leslie will teach a workshop called "Fiesta Necklace" on Saturday afternoon from 1:00 to 4:00 p.m. This is one of the "Bead Monkey's" most popular classes. Participants will learn to

make a beautiful lacey necklace using the horizontal netting stitch.

The fee is \$30 for each class, supplies are extra and will vary and depending on individual bead selections. Bead kits will be sold at the class (\$5-\$15 each). Class sizes are limited. Please pre-register by September 21.

Adult Weaving Workshop by Grete Bodogaard

Internationally recognized weaver, Grete Bodogaard, lives part of her year in Norway, and part of it in Rapid City, South Dakota. She is a master-weaver and has shown her works here at the South Dakota Art Museum and in exhibitions throughout the country and the world. We are fortunate that Grete has agreed to teach a weekend weaving workshop here at the Museum. This class is for beginners with a strong interest, or students with some weaving background.

The workshop will begin on Friday, October 19, with class from 6:00 to 9:00 p.m. On Saturday, October 20, the hours are 9:00 a.m. to 12:00 noon with an hour break for lunch, and class resumes from 1:00 to 5:00 p.m., running into the evening if necessary. The workshop will wrap up on Sunday, October 21, from 12:00 noon to 4:00 p.m.

The class fee is \$175 including materials. Looms (12" x 18") will be available for a rent (\$10) or for purchase (\$25). Those who have looms may bring their own.

Class size is limited. Please pre-register by October 5.

Children's Art on Paper Workshop

The children's Art on Paper Workshop consists of two sessions. The first class will be a papermaking workshop, and the second will be printing on the paper made during Session I. Also, the children will tour the *Art on Paper* exhibition.

The Art on Paper Workshop is for children 8 to 12 years old. Session I will be held on Wednesday, September 19, from 2:30 to 4:30 p.m., and Session II will be on Wednesday, September 26, from 2:30 to 4:30 p.m.

The class fee is \$20 for the 2 sessions, including materials. Class size is limited. Please pre-register by September 12.

Children's Fiber Art Workshop

Children will print on fabric and create their own stencils to decorate a tee shirt during the children's fiber art workshop on Wednesday, October 17, from 2:30 to 4:30 p.m. They will also tour the exhibition *Men of the Cloth* to view artworks created from fibers and textiles.

The fiber art workshop is for children 8 to 12 years old. The Class fee is \$12 and includes materials. Class size is limited. Please pre-register by October 10.

Community Partnership

Growth Thru Art is a unique program offered by the South Dakota Art Museum to provide developmentally disabled persons with an opportunity for creative expression. Every Tuesday afternoon eight students from the ADVANCE program in Brookings, visit the South Dakota Art Museum to participate in a class that offers a hands-on art experience.

"This program is based on the belief that every person is born with the power to create," says Museum director, Lynn Verschoor, who initiated the project. "Growth Thru Art is dedicated to providing an enabling environment for participants to create and express themselves through visual art."

The students, who meet weekly for a two-hour session, have been introduced to a variety of two-dimensional media including drawing, painting, and collage. Verschoor also treats her students to tours of the Art Museum galleries.

Class materials for Growth Thru Art have been generously provided by a grant from the Brookings area Altrusa Club.



SDAM director Lynn Verschoor, standing.

From left to right: Jean Hoekman, Bill Lufkins, Richard Zeller

MAKING GIFTS AND BEQUESTS TO

SOUTH DAKOTA MUSEUM

Did you know that the recent remodeling of the SD Art Museum was made possible by the generous support of individuals like you? And were you aware that, although the Museum receives some funding from the state of South Dakota, it could not continue to maintain its services to the public without the financial gifts of its members and friends?

How can you help? Membership dollars and other current gifts are always needed to assist with the day-to-day expenses of operating a Museum. But each of us can play an important part in the meaningful work of preserving South Dakota's artistic heritage by including the South Dakota Art Museum in his or her estate plan.

You can leave a legacy and help insure that the South Dakota Art Museum will be able to serve future generations by employing several planned giving techniques, and each of these techniques can provide significant tax benefits to your estate. Leaving an outright bequest through your will or trust is a simple way to make a real difference. Or you may want to name the South Dakota Art Museum as a beneficiary of an IRA account or a life insurance policy. Another option is to consider the creation of an Annuity or a Charitable Remainder Trust in which the Museum has a future right to the principal.

Other options are available as well. Advice about estate planning is available without cost or obligation. For more information, please contact Lynn Verschoor at the South Dakota Art Museum, Medary Avenue at Harvey Dunn Street, Brookings, SD 57007; (605) 688-5423.

Buy a Brick

The design of the new Art Museum includes a large main entry plaza made up of concrete walkways surrounding a triangle of embedded brick pavers. The inlaid triangle is intended as a gesture of welcome to visitors and serves to guide them to the entrance of the Museum.

Museum supporters have the opportunity to purchase an engraved brick for a \$100 donation.

A donation of \$100 allows the donor to select an inscription to be applied to the face of a brick. Each brick will have three lines available for inscription with eleven spaces on each line. This is a wonderful opportunity to honor or memorialize loved ones, while supporting the South Dakota Art Museum.

Make checks payable to: South Dakota Art Museum

Mail to: South Dakota Art Museum
Box 2250, SDSU
Brookings, SD 57007-0899

Fall Film Series Planned

The South Dakota Art Museum is collaborating with Reel Images, the South Dakota State University film society, to present a film series at the Museum. Research is underway to develop an eclectic program featuring independent filmmakers, foreign films, and classics.

The lower level auditorium of the South Dakota Art Museum is the venue on selected Thursday evenings at 7:00 p.m. The tentative schedule includes October 11 and November 1, 8, and 15.

Watch for further information.

Museum Discovery Tour



Making Friends

Twenty-five satisfied travelers returned Saturday, June 30, from a wonderful 3-day Museum Discovery Tour to the Twin Cities. Guided tours of the Walker Art Center, the Minnesota Museum of American Art, and the Minneapolis Institute of Arts were supplemented by visits to the Minneapolis Sculpture Gardens and the Science Museum of Minnesota with its remarkable IMAX domed theatre.

The evenings were filled with spectacular dining and entertainment. A delicious meal and front row tables at the Chanhassen Dinner Theatre's superb production of *My Fair Lady* finished the first day. The second evening saw the group dining on the Mississippi River during a leisurely riverboat cruise.

The museums were amazing, and the incredible group of people who shared a common interest in the arts made the trip a complete success! Thanks to all who participated.

Current Museum *Memberships* As of June 31, 2001

Family

Lynn & Diane Anderson, Brookings, SD
 Bob & Becky Baer, Brookings, SD
 Philip & Winifred Baker, Brookings, SD
 Lawrence & Phyllis Bartling, Brookings, SD
 Robert & Phyllis Bell, DeSmet, SD
 Dr. Sherwood & Betty Berg, Brookings, SD
 John & Mary Bibby, Brookings, SD
 Dennis & Darla Bielfeldt, Brookings, SD
 Harry & Mardella Birath, Brookings, SD
 Rev. Larry & Jan Boutelle, Brookings, SD
 Burt & Delores Brage, Brookings, SD
 Dr. Hilton & Nelda Briggs, Brookings, SD
 Tim & Peggy Brown, San Francisco, CA
 Larry & Della Browning, Brookings, SD
 Dr. & Mrs. John A. Carpenter, Athens, GA
 Terry & Sharon Casey, Chamberlain, SD
 Gene & Margy Chamberlin, Brookings, SD
 Gary & Rosemary Chappell, Brookings, SD
 Chris & Mary Chase, Brookings, SD
 Herb & Sydna Cheever, Minneapolis, MN
 Winifred & Kay Cheever, Brookings, SD
 Carolyn Clague & Dennis Hopfinger, Brookings, SD
 Walter & Marjorie Conahan, Volga, SD
 Beverly Craddock, Brookings, SD
 Jennifer Crickard, & Emery Tschetter, Brookings, SD
 Brian & Lynn Darnall, Brookings, SD
 Lloyd & Maxine Darnall, Brookings, SD
 William & Rebecca Daugherty, Hendricks, MN
 Koss & Teresa Delfinis, Brookings, SD
 Max & Marilyn DeLong, St. Paul, MN
 Clarence & Margaret Denton, Brookings, SD
 Albert & Thelma Dittman, Brookings, SD
 Robert & Katherine Doares, Salisbury, NC
 Chandradhar & Praha Dwivedi, Brookings, SD
 Dean & Joan Dybing, Brookings, SD
 Mr. & Mrs. Ron Einspahr, Brookings, SD
 Royce & Ruth Emerick, Brookings, SD
 Anne Fennell & Gary Yarrow, Brookings, SD
 Robert & Jesse Finch, Rochester, MN
 Woody & Betty Franklin, Brookings, SD
 Henry & Alice Gehrke, Brookings, SD
 David & Naomi Gilkerson, Brookings, SD
 B.J. & Helen Gottsleben, Brookings, SD
 Nels & DeAnna Granholm, Brookings, SD
 Christine Hamilton, Kimball, SD
 R. Wayne Hamilton, Armour, SD
 Lloyd & Roberta Hansen, Brookings, SD
 Patrick & Joanne Hart, Mankato, MN
 Nadim & Seham Hassoun, Brookings, SD
 Kenneth & Mary Haug, Brookings, SD
 John & Arlene Hendrickson, Brookings, SD
 J.P. & Susie Hendrickson, Brookings, SD
 Leslie & Virginia Hoffman, Brookings, SD
 Dr. Richard & Joanie Holm, Brookings, SD
 Ernest & Mildred Huggins, Brookings, SD
 David & JoAnn Johnson, Brookings, SD
 Daniel & Michele Kemp, Brookings, SD
 Kevin & Lucy Kephart, Brookings, SD
 Clyde & Dee Kirkbride, Brookings, SD
 Randy & Sue Knutzen, Brookings, SD
 Laverne & Loretta Kortan, Brookings, SD
 Jay & Kathy Larsen, Brookings, SD
 Dale & Pat Larson, Brookings, SD
 Maree Larson, Brookings, SD
 Susan Laskey, Brunswick, ME
 Charles & Maxine Lingren, Brookings, SD
 George & Roberta Lohr, Littleton, CO
 Bruce & Ila Lushbough, Brookings, SD
 William & Margaret Lytle, Brookings, SD
 Doug & Rosie Malo, Brookings, SD
 Jack & Marty Marken, Brookings, SD
 David & Linda Marquardt, Brookings, SD
 Steve & Judy Marquardt, Brookings, SD
 Tom & Judy Martin, Brookings, SD
 Roy & Delpha Masson, Brookings, SD
 John & Mary Moe, Columbus, IN
 James & Dorothy Morgan, Brookings, SD
 Stewart & Josie Moyer, Brookings, SD
 Stanley & Barbara Nelson, Harris, MN
 Larry Ness, Yankton, SD
 David & Roberta Olson, Brookings, SD
 Gordon & Jeri Ommen, Brookings, SD
 Kenneth & Dolores Ostrout, Brookings, SD
 Homer & Lillian Osvog, Brookings, SD
 David Pearson, Edina, MN
 Robert & Lillian Pengra, Brookings, SD
 Otis & Kathryn Penrod, Brookings, SD
 Lawrence & Catherine Piersol, Sioux Falls, SD
 Phillip & Darlene Plumart, Brookings, SD
 Greg & Nancy Rexwinkel, Brookings, SD
 Jim & Merlynn Rezek, Sioux Falls, SD
 Fred & Ardyne Rittershaus, Brookings, SD
 Charles & Margaret Roberts, Brookings, SD
 Gail & Rosemary Robertson, Brookings, SD
 John & Kay Romans, Urbana, IL
 Bob & Madeleine Rose, Brookings, SD
 Alfred & Deanna Rude, Brookings, SD
 John & Alla D. Ruffolo, Brookings, SD
 Duane & Phyllis Sander, Brookings, SD
 Greg & Kathy Satter, Sioux Falls, SD
 Bill & Lisa Scholten, Brookings, SD
 Robert & Jacqueline Sexauer, Brookings, SD
 Mr. & Mrs. Kendall Sheldon, Watertown, SD
 Mark & Peggy Shlanta, Sioux Falls, SD
 Jack & Linda Stengel, Milbank, SD
 Joseph & Signe Stuart, Santa Fe, NM
 Raymond Sturdevant, Brookings, SD
 Dean & Harriet Swedlund, Brookings, SD
 Ronald & Jan Tesch, Brookings, SD
 Ann McKay Thompson, Pierre, SD
 Robert & Mary Thompson, Lindstrom MN
 Carl & Silva Trautman, Brookings, SD
 Craig & Della Tschetter, Brookings, SD
 Dr. Charles & Joann Ullery, Brookings, SD
 Gary & Sharon Van Riper, Brookings, SD
 Lynn Verschoor & Roy Ervin, Brookings, SD
 Merritt G. & Pamela Warren, Brookings, SD
 Mr. Kenneth Way, Watertown, SD
 Mason & Janie Wheeler, Aurora, SD
 Everett & Doris White, Brookings, SD
 Zeno W. Wicks, III & Roxanne Savaryn Wicks, Brookings, SD
 Louis & Elizabeth Williams, Brookings, SD
 Richard & Donna Wilson, Brookings, SD
 Milan & Judith Zivanovic, Brookings, SD

Individual

Jerry Abel, Brookings, SD
 Dr. Ruth Alexander, Brookings, SD
 Deb Archer, Brookings, SD
 Sharon Arnold, Brookings, SD
 Marian Barnes, Brookings, SD
 Maureen Barney, San Marcos, CA
 Helen Bechtold, Brookings, SD
 Eileen Bell, Brookings, SD
 Dr. Joye Ann Billow, Brookings, SD
 Jacquelin Blackford, Brookings, SD
 Boyd Bonzer, Brookings, SD
 Ruth Brennan, Rapid City, SD
 Mrs. Dorothy Brisco, Minneapolis, MN
 Marilyn Brown, Brookings, SD
 Nancy D. Burgess, Yankton, SD
 Virginia Congers, Brookings, SD
 Irene A. Cordts, Faulkton, SD
 Norma Dannenbring, DeSmet, SD
 Mrs. Nathalie DeHaan, Brookings, SD
 Emma Dimit, Brookings, SD
 Martin Draper, Brookings, SD
 Mrs. Keith Eilers, Huron, SD
 Dr. Peggy Gordon Elliott, Brookings, SD
 Audrey Estebo, St. Paul, MN
 Sandra Evers, Bettendorf, IA
 Julia Finley, Brookings, SD
 First National Bank, Brookings, SD
 Loretta Foster, Brookings, SD
 Susan Fredrickson, Brookings, SD
 Norman Gambill, Brookings, SD
 Beth L. Hanson, Brookings, SD
 Mildred S. Hendrick, Kalamazoo, MI
 Lori Hendrickx, Brookings, SD
 Lillian Hellickson, Brookings, SD
 Arlene Hodges, Aurora, SD
 Dave Huebner, Bushnell, SD
 Ardell Johnson, Watertown, SD
 Janet Johnson, Brookings, SD
 Hildegard Johnson, Brookings, SD
 Robert Jones, Brookings, SD
 Jean Jostad, Brookings, SD
 Jeff Jung, Brookings, SD
 Pam Kedl, Brookings, SD
 P. Jean Kincaid, Laurinburg, NC

General Donors

Abbott Laboratories Fund, Abbott Park, IL
 Jim & Colette Abbott, Vermillion, SD
 Jerry Able, Brookings, SD
 Robert & Joey Aldern, Sioux Falls, SD
 Ruth Alexander, Brookings, SD
 BankFirst, Sioux Falls, SD
 Maureen Hurley Barney, San Marcos, CA

Lawrence & Phyllis Bartling, Brookings, SD
 Leonard Bassett, Littleton, CO
 Robert & Phyllis Bell, DeSmet, SD
 Rodney & Fayne Bell, Brookings, SD
 Duane & Norma Benton, Powell, OH
 Dr. Sherwood & Betty Berg, Brookings, SD
 Peter A. Binker, Brookings, SD
 Rev. Larry & Jan Boutelle, Brookings, SD
 Ruth Brennan, Rapid City, SD
 Hilton & Nelda Briggs, Brookings, SD
 Dorothy Brisco, Minneapolis, MN
 Brookings Civic League, Brookings, SD
 Community Bank, Avon, SD
 Winnifred & Kay Cheever, Brookings, SD
 Dana Crooks Painting, Volga, SD
 Dakota Granite, Milbank, SD
 Lloyd & Maxine Darnall, Brookings, SD
 Max & Marilyn DeLong, St. Paul, MN
 Arthur & Barbara Dickerson, St. Paul, MN
 Emma Dimit, Brookings, SD
 Albert & Thelma Dittman, Brookings, SD
 A. O. Distad, Watertown, SD
 Robert & Katherine Doares, Salisbury, NC
 Dr. Peggy Gordon Elliott, Brookings, SD
 Elmen Family Foundation, Sioux Falls, SD
 Lewayne & Nancy Erickson, Brookings, SD
 Anne Fennell & Gary Yarrow, Brookings, SD
 First National Bank, Brookings, SD
 Gerald Frick, Fergus Falls, MN
 Friends of the Arts, Brookings, SD
 GFWC of Brookings, Brookings, SD
 David & Naomi Gilkerson, Brookings, SD
 William & Harriet Gould Foundation, Jensen Beach, FL
 Merle Gunsalus, Brookings, SD
 Alex & Laurie Haleta, Bruce, SD
 Christine Hamilton, Kimball, SD
 Wayne Hamilton, Armour, SD
 Beth Hanson, Brookings, SD
 Jeanne Harrison, Aurora, SD
 Ronald & Margaret Hegge, Aurora, SD
 Mildred Hendrick, Kalamazoo, MI
 J.P. & Susie Hendrickson, Brookings, SD
 Hillcrest PTA, Brookings, SD
 Dr. Richard & Joanie Holm, Brookings, SD
 Lenore Holthusen Estate
 Ernest & Mildred Huggins, Brookings, SD
 Dorothy Ishol, Brookings, SD
 David & JoAnn Johnson, Amery, WI
 Jerry & JoAnn Jorgensen, Brookings, SD
 Clyde & Dee Kirkbride, Brookings, SD
 Larson Foundation, Brookings, SD
 David & Mary Leonard, Boulder, CO
 Charles & Maxine Lingren, Brookings, SD
 Kathy Lippincott, Springfield, VA
 George & Roberta Lohr, Littleton, CO
 Norman Martin, Brookings, SD

J. Walt McCarty, Brookings, SD
 Minnesota Mining & Mfg., St. Paul, MN
 John & Mary Moe, Columbus, IN
 Stewart & Josie Moyer, Brookings, SD
 Glen & Doreen Nachtigal, Brookings, SD
 Robert & Louise Nagle, Piedmont, CA
 Jane Neale, Alexandria, VA
 Paula Nelson, Platteville, WI
 Larry Ness, Yankton, SD
 Notlimah Associates, Omaha, NE
 Janet Odden, Bartlesville, OK
 Ella Ollenburger, Brookings, SD
 Elaine Olson, Brookings, SD
 Robert Olson, Kansas City, MO
 Homer & Lillian Osvog, Brookings, SD
 Dr. Carol Jean Peterson, Brookings, SD
 Lawrence Piersol, Sioux Falls, SD
 Rainbow Play Systems, Brookings, SD
 Donald Reiner Estate
 Elizabeth Rezek, Sioux Falls, SD
 Charles & Margaret Roberts, Brookings, SD
 Galen Rosenow, San Antonio, TX
 Dorothy Rude, Brookings, SD
 Louise Rutherford, Chatham, MA
 Ruth Schlobohm, Columbus, NE
 Sigma Alpha Epsilon
 South Dakota Association of Family & Community Education, Mitchell, SD
 Clayton & Anella Southwick, Rapid City, SD
 Orville Stangl, Java, SD
 Jack & Linda Stengel, Milbank, SD
 Larry Stine, Brookings, SD
 Raymond Sturdevant, Brookings, SD
 Robert & Maureen Suga, Sioux Falls, SD
 Harriett Swedlund, Brookings, SD
 Ann McKay Thompson, Pierre, SD
 Carl & Silva Trautman, Brookings, SD
 Craig & Della Tschetter, Brookings, SD
 Curtis Twedt, Lincoln, NB
 Sharon Van Schoiack, Denver, CO
 Calvin Vaudrey, Litchfield Park, AZ
 Kenneth B. Way, Watertown, SD
 Deborah Wessells, Glen Moore, PN
 Zeno W. Wicks, III & Roxanne Savaryn Wicks, Brookings, SD
 Elizabeth Evenson Williams, Brookings, SD
 Beryl Younger, Brookings, SD

Bricks Contributors

Jerry Abel, Brookings, SD
 Robert & Joey Aldern, Sioux Falls, SD
 John & Mary Askew, Sioux Falls, SD
 Maureen Barney, San Marcos, CA
 Marian Barnes, Brookings, SD
 Lawrence & Phyllis Bartling, Brookings, SD
 Robert & Phyllis Bell, DeSmet, SD
 Rodney & Fayne Bell, Brookings, SD
 David Benfield, Brookings, SD
 Dr. Sherwood & Betty Berg, Brookings, SD
 Ruth Brennan, Rapid City, SD
 Hilton & Nelda Briggs, Brookings, SD
 Brookings Chiropractic, Brookings, SD
 Terry & Sharon Casey, Chamberlain, SD

Carolyn Clague & Dennis Hopfinger, Brookings, SD
 Irene Cordts, Faulkton, SD
 Gloria Craig, Brookings, SD
 Lloyd & Maxine Darnall, Brookings, SD
 Max & Marilyn DeLong, St. Paul, MN
 Clarence & Margaret Denton, Brookings, SD
 Arthur & Barbara Dickerson, St. Paul, MN
 Emma Dimit, Brookings, SD
 Robert & Katherine Doares, Salisbury, NC
 Simon Donnelly, Manchester, England
 Dean & Joan Dybing, Brookings, SD
 Dr. Peggy Gordon Elliott, Brookings, SD
 Royce & Ruth Emerick, Brookings, SD
 Don Evenson, Arlington, SD
 Jerry & Mary Fiedler, Brookings, SD
 Mary Fleming, Flandreau, SD
 Bette Gerberding, Brookings, SD
 David & Naomi Gilkerson, Brookings, SD
 GFWC of Brookings, Brookings, SD
 GFWC Travelers Club, Chamberlain, SD
 Wayne Hamilton, Armour, SD
 Christine Hamilton, Kimball, SD
 Sharon Hanson, Brookings, SD
 Janice Hauge Embry, Brookings, SD
 Dave & Patty Helgeland, Brookings, SD
 Leslie High, Bryn Mawr, PA
 Dr. Richard & Joanie Holm, Brookings, SD
 Ernest & Mildred Huggins, Brookings, SD
 Deronda Hunter, Adrian, MN
 Roland & Deloris Jensen, Minneapolis, MN
 David & JoAnn Johnson, Amery, WI
 Murray & Kathryn Johnson, Watertown, SD
 Dave & Julie Kappenman, Rapid City, SD
 P. Jean Kincaid, Laurinburg, NC
 Clyde & Dee Kirkbride, Brookings, SD
 Maree Larson, Brookings, SD
 Hilda Lenocker, San Diego, CA
 Bonnie Lievan, Minneapolis, MN
 Stephen Lurvey, Brookings, SD
 Steve & Judy Marquardt, Brookings, SD
 Don Marshall, Brookings, SD
 John & Mary Moe, Columbus, OH
 Virginia Mosley, Tenafly, NJ
 Gordon Mydland, Lake Preston, SD
 Glen & Doreen Nachtigal, Brookings, SD
 Larry Ness, Yankton, SD
 Ella Ollenburger, Brookings, SD
 Elaine Olson, Brookings, SD
 Gordon & Jeri Ommen, Brookings, SD
 David Pearson, Edina, MN
 Mary Perpich, Brookings, SD
 Harold & Evie Platt, Brookings, SD
 Jim & Merlynn Rezek, Sioux Falls, SD
 Marilyn Richardson, Ivinnes, UT
 Dorothy Rude, Brookings, SD
 Stephanie Russo, Lexington, KY
 Louise Rutherford, Chatham, MA
 Ruth Schlobohm, Columbus, NE

Mark & Peggy Shlanta, Sioux Falls, SD
 Sigma Alpha Epsilon, Theta Chapter, Brookings, SD
 Clayton & Anella Southwick, Rapid City, SD
 Benjamin Spies, Watertown, SD
 Orville Stangl, Java, SD
 Jack & Linda Stengel, Milbank, SD
 Larry Stine, Brookings, SD
 Lawrence Stitt, Citrus Heights, CA
 Raymond Sturdevant, Brookings, SD
 Verna Sturdevant, Brookings, SD
 Adele Sudlow, Brookings, SD
 Harriet Svec, Brookings, SD
 Marilyn Swanson, Brookings, SD
 Jerry & Mira Sweeney, Brookings, SD
 Ann McKay Thompson, Pierre, SD
 Larry & Gail Tidemann, Brookings, SD
 Carl & Silva Trautman, Brookings, SD
 Craig & Della Tschetter, Brookings, SD
 Sharon Van Schoiack, Denver, CO
 Calvin Vaudrey, Litchfield Park, AZ
 Rich & Jo Waldner, Brookings, SD
 Lois Watson, Brookings, SD
 Mr. & Mrs. Kenneth Way, Watertown, SD
 Deborah Wessells, Glen Moore, PA
 Louis & Elizabeth Williams, Brookings, SD
 Gary Yarrow, Brookings, SD
 Beryl Younger, Brookings, SD

Gift Store Project Contributors

Lynn & Diane Anderson, Brookings, SD
 Lawrence & Phyllis Bartling, Brookings, SD
 Dr. Sherwood & Elizabeth Berg, Brookings, SD
 Burt & Dolores Brage, Brookings, SD
 Gene & Margy Chamberlin, Brookings, SD
 Clarence & Margaret Denton, Brookings, SD
 Royce & Ruth Emerick, Brookings, SD
 Robert & Jessie Finch, Rochester, MN
 Louise Guild, Brookings, SD
 Jody Holm, Brookings, SD
 Ernest & Mildred Huggins, Brookings, SD
 Clyde & Dee Kirkbride, Brookings, SD
 Randy & Sue Knutzen, Brookings, SD
 M.A. & Karen Lund, Sioux Falls, SD
 Bruce & Ila Lushbough, Brookings, SD
 Roy & Delpha Masson, Brookings, SD
 David & Pat Meyer, Brookings, SD
 Joy Mills, Volga, SD
 John & Mary Moe, Columbus, OH
 Stewart & Josie Moyer, Brookings, SD
 James & Peg O'Connell, Northfield, MN
 Elaine Olson, Brookings, SD
 Donna Ritter, Brookings, SD
 John & Kay Romans, Urbana, IL
 Duane & Phyllis Sander, Brookings, SD
 Gary & Sharon Van Riper, Brookings, SD
 Robert & Mary Wagner, Keystone, SD
 Louis & Elizabeth Williams, Brookings, SD
 Richard & Donna Wilson, Brookings, SD

South Dakota Art Museum Membership Application/Renewal

Our members are vital to the continued development of the South Dakota Art Museum, and, in turn, the Art Museum makes our members' lives much richer through the arts.

Basic Membership Benefits (Renewed Annually)

- 10% discount on Museum Store purchases.
- 20% discount on Museum classes and workshops.
- Subscription to the South Dakota Art Museum News and other Museum mailings.
- Recognition in the annual membership issue of the News.

Contributing Membership Benefits

In addition to your dues, your contribution to the Museum will help to purchase works of art and aid in Museum operations and programming. These contributions also fund publications, scholarly research on collections, conservation of art works, and their restoration. Contributing members receive all of the basic membership benefits plus the special benefits listed below.

Contributor (\$100 and above)

- Family membership for two adults and their children through age eighteen.
- Basic membership benefits.

Donor (\$500 and above)

- All benefits above, plus one free gift membership to a friend.
- Recognition for your level of giving on donor panels.

Supporter (\$1000 and above)

- All benefits above, plus one additional free gift membership to a friend.

Sustainer (\$5000 and above)

- All benefits above, plus receive recognition as a sponsor or co-sponsor of a SDAM exhibition or program selected in collaboration with the director.

Benefactor (\$10,000 and above)

- All benefits above, plus receive recognition as a sponsor or co-sponsor of two SDAM exhibitions or programs selected in collaboration with the director.

To join, simply fill out the attached form and mail it to the South Dakota Art Museum with your check or credit card information. Call the Museum Office at 688-5423 if you have questions regarding membership or wish to pursue other ways of giving.

Memberships purchased between March and August have renewal dates of May 1 the following year. Memberships purchased between September and February have renewal dates of November 1 the following year.

Volunteer opportunities are available.
Call 605-688-5423 for more information.

THE SOUTH DAKOTA *Art* MUSEUM NEEDS

You

Full Name(s) _____
Address _____
City _____ State _____ Zip _____
Telephone (____) _____
E-mail _____

Basic Memberships

SDSU Student	FREE
Individual	\$30.00
Family	\$40.00
<i>(Up to two adults in one household and their children through age eighteen.)</i>	
Individual Senior Citizen, age 62 and over	\$25.00
Couple Senior Citizen, age 62 and over	\$35.00

Contributing Memberships

All contributing memberships are for up to two adults in one household and their children through the age of eighteen. Discounts are available for all those persons listed on the membership.

Contributor	\$100-499
Donor	\$500-999
Supporter	\$1,000-4,999
Sustainer	\$5,000-9,999
Benefactor	\$10,000 and above

Please list children through age 18 to be included in a family or contributing membership:

Name _____
Birth Year _____
Name _____
Birth Year _____
Name _____
Birth Year _____

☐ Check enclosed

☐ Charge, I wish to use

Mastercard/Visa # _____

Expiration Date _____

Signature _____

TOTAL MEMBERSHIP \$ _____

Your entire membership is tax deductible to the full extent of the law.

Membership

South Dakota Art Museum
Box 2250, South Dakota State University
Brookings, SD 57007

Men of the Cloth

Contemporary Fiber Art

Men of the Cloth is an exhibition that celebrates the male fiber artist through a joyful expression of the things that men can create with fiber. It conveys the hope that men will see what can be done—and then go out and do it.

The exhibit explores issues of gender and stereotype, and it also addresses the conflict of art vs. craft. As guest curator and needlepoint artist, Stephen Beal stated, "According to traditional views, men like to do things, men like to make things, and all the works in this exhibit exemplify great craft. But men have souls, too, and men love beauty—color, form, structure—and that is art."

This exhibit features traditional fiber techniques such as tapestry, embroidery, applique, and beadwork—sometimes used in nontraditional designs. New techniques and the use of atypical materials like staples, aluminum rings, and metal screen stretch the boundaries of what we perceive as fiber.

The exhibition will open with a reception on Thursday, September 6, from 4:30 to 7:00 p.m. South Dakota Art Museum director, Lynn Verschoor, will present a Gallery Talk at 5:30 p.m. Verschoor was instrumental in the production of *Men of the Cloth* when she was a curator at Loveland Museum/Gallery. *Men of the Cloth* can be seen at the South Dakota Art Museum through January 3, 2002.

Men of the Cloth was organized and circulated by the Loveland Museum/Gallery of the City of Loveland, Colorado. This exhibit is supported by funding from the Colorado Council on the Arts, a state agency funded by the Colorado General Assembly, and the National Endowment for the Arts, a federal agency. This exhibit is also supported by funding from the Friends of Fiber Art International.

BOARD OF TRUSTEES

Ann McKay Thompson, Pierre, President
Jack Stengel, Milbank, Vice-President
Diane Anderson, Brookings
Phyllis Bell, DeSmet
Ruth Brennan, Rapid City
Hilton M. Briggs, Brookings
Sharon Casey, Chamberlain
Marilyn DeLong, St. Paul, MN
Peggy Gordon Elliott, Brookings
Christine Hamilton, Kimball
Carol Hepper, New York City, NY
Jerry Jorgenson, Brookings
Maree Larson, Brookings
Larry Ness, Yankton

GUILD DIRECTORS

Dee Kirkbride, President
Pam Warren, Vice-President
Donna Ritter, Secretary
Dolly Engstrom, Treasurer
Naomi Gilkerson, Historian
Gloria Thvedt, Member at Large
Sharon Van Riper, Member at Large
Nancy Rexwinkel, Art-in-the-Schools Coordinator

STAFF

Lynn Verschoor, Director
Nancy Rexwinkel, Education Curator
Lisa Scholten, Collections Curator
Tilly Laskey, Exhibition Curator
Teresa Delfinis, Museum Store Manager/
Administrative Assistant
Kristin Hagen, Curatorial Assistant

This newsletter is sponsored by: Brookings Friends of the Arts and the South Dakota Arts Council, a state agency with funds from the National Endowment for the Arts and the South Dakota State Legislature.

Directions: 1 & 1/2 miles West from Interstate 29 on Hwy 14, turn right on Medary Avenue, 4 blocks to Harvey Dunn Street. Museum is on right.

8,500 copies of this document were printed by the South Dakota Art Museum at a cost of \$.50 each. MA001 8/01



South Dakota State University

SOUTH DAKOTA Art MUSEUM

Medary Avenue at Harvey Dunn Street
Box 2250, SDSU
Brookings, South Dakota 57007-0899
(605) 688-5423

E-mail: sdsu_sdam@sdstate.edu

Web: sdartmuseum.sdstate.edu



Accredited by the American Association of Museums

Free public hours are:
Monday– Friday 10:00 a.m. – 5:00 p.m.
Saturday 10:00 a.m. – 4:00 p.m.
Sunday and holidays 12:00 p.m. – 4:00 p.m.
(Closed on state holidays – please call ahead)

CHANGE SERVICE REQUESTED

NON-PROFIT
US POSTAGE PAID
BROOKINGS SD
PERMIT 24

1*1*****5-DIGIT 57006

**LARRY STINE
722 MEDARY AVE APT 4
BROOKINGS SD 57006-1550**

