

South Dakota State University

**Open PRAIRIE: Open Public Research Access Institutional
Repository and Information Exchange**

South Dakota Art Museum Newsletters and Publications

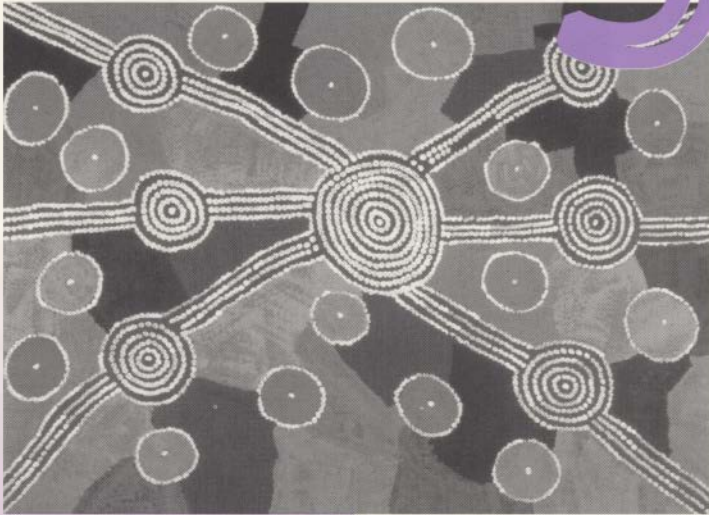
Fall 2002

South Dakota Art Museum News, Fall 2002

South Dakota Art Museum

Follow this and additional works at: https://openprairie.sdstate.edu/sdam_news

AUSTRALIAN Tingari ABORIGINAL ART



Snake Dreaming, Billy Stockman

The South Dakota Art Museum is honored to host an exhibition of Tingari Aboriginal Art from the central desert regions of Australia from October 21, 2002, through February 23, 2003. The display celebrates

the premise of belonging to the land—a basic belief of all Aborigines. The people, the land, culture and art are inseparable.

More than just colorful abstract paintings comprised of minute dots of paint and scattered with an array of starbursts, roundels, ovals, and arches, Australian Aboriginal paintings represent the symbolism and iconography of a culture imbued with a rich mythology sustained through its traditions and storytelling, sacred rituals and art. Desert Aboriginal artists preserve an ancient symbolism that was first developed as ceremonial ground paintings, body decorations, and rock art. The modern mediums of acrylic paint applied to canvas and board were introduced in the 1970's.

The technique, however, has not changed. Most of the paintings in the exhibition were created using the "Desert Dot" method (Desert Pointillism). The environment was an important factor in the development of this style. The prevailing feature of the landscape is sand, so sandpaintings were always the focus of religious ceremonies and body painting and "dotting" were an aspect of these ceremonies.

Each drawing tells a story—a moral tale, a warning of danger, a geographical map of food gathering areas, waterholes, or ceremonial events. Ceremonial sand paintings were trampled during the ceremony by the dancers and after the ceremony remaining evidence was destroyed to prevent viewing by uninitiated eyes.

With the advent of modern mediums, art that had for centuries been transitory in its physical nature became permanent and transportable. Aboriginal Art became a window through which the Western World could begin to view this ancient and unique culture. The new medium allows the Aborigines to maintain an important aspect of their culture; however, religious tenets are still considered secret/sacred and not divulged.

Related Programming

- Exhibit organizer, Marie Craig will present a gallery talk at a public reception scheduled for Thursday, October 24, 4:30-7:00 p.m.

- A Dakota Reader Performance featuring Paul "Walking Stick" Taylor, an Australian storyteller, didjeridoo player and traveler presenting music and stories from the Australian Outback is scheduled for Saturday, December 7, 2002. Taylor will present a didjeridoo workshop in the morning from 10:00 a.m. to 12:00 noon.

He will return at 7:00 p.m. on Saturday, December 7, to present a program of spellbinding storytelling, music, and slides of the Australian outback. This performance is supported in part by South Dakota State University's Office of Multicultural Affairs, and by the National Endowment for the Arts.

OSCAR HOWE, KEVIN LOCKE

A Celebration of Dance

The South Dakota Art Museum presents *Oscar Howe: Dancers*, an exhibition of paintings by South Dakota's native son, Yanktonai artist and modernist painter, Oscar Howe. The thematic celebration of dance, art, and self-expression will be shown through October 10, 2002.

Native people have long regarded music and dance with a special reverence. Dance may be social or part of a sacred ceremony. As a form of communication with other people, nature, or spiritual forces, dance honors and celebrates nature's creations and life's events.

The 27 original works in the *Dancers* exhibition are from the Art Museum's permanent collection, as well as pieces loaned from the University of South Dakota and from private collectors. The earliest pieces date from the 1940's, and most are done in casein, a water-soluble milk-based paint or gouache, a painting medium similar to watercolor, but heavier and more opaque. A pencil drawing and a lithograph are also included.

Oscar Howe was born in 1915 at Joe Creek on the Crow Creek Reservation in central South Dakota. He was educated at the Pierre Indian School where he later returned to teach. At the age of 21, he went to the Santa Fe Indian School and studied under Dorothy Dunn, the teacher who greatly influenced his early work. During the mid-1950's, Howe abandoned the flat decorative style taught in Santa Fe and developed his own unique hybrid of traditional Dakota and Modern Euro-American technique.

After graduating from the Santa Fe Indian School in 1938, Howe went on to earn his bachelor's degree from Dakota Wesleyan University in Mitchell, South Dakota, in 1952 and his master of fine arts degree from the University of Oklahoma in 1954. He was professor of art and artist-in-residence at the University of South Dakota in Vermillion from 1957 to 1980. Oscar Howe died in 1983.

Kevin Locke is known throughout the world as a pre-eminent player of the indigenous Northern Plains dancing flute, as well as an inspiring hoop dancer, traditional storyteller, cultural ambassador and educator. He will perform at the South Dakota Art Museum on Wednesday, September 25. The performance will be in conjunction with the exhibition *Oscar Howe: Dancers*. Locke is a former student of Oscar Howe.

A National Heritage Fellowship winner, Kevin Locke is of Lakota (Hunkpapa Band) and Anishinabe heritage.



Kevin Locke

He has served as a cultural ambassador for the United States Information Service since 1980. Touring for two decades, he has performed in more than 70 countries around the world sharing his high vision of balance, joy, and diversity through music and dance.

At 4:00 p.m. on September 25, he will present a storytelling session and will return at 7:00 p.m. for a Dakota Reader Performance performance of traditional Lakota music and dance.

This event is supported by South Dakota State University's Office for Diversity Enhancement, and the South Dakota Arts Council with funds from the state of South Dakota through the Department of Education and Cultural Affairs, and the National Endowment for the Arts.



Eagle Dancer, 1953-57, casein on paper, Oscar Howe

South Dakota Artist Series continues

The *South Dakota Artist Series* of exhibitions that originated in December 2000 with the Grand Re-Opening of the South Dakota Art Museum, will continue into its third year thanks to an Arts Leadership Grant from the South Dakota Arts Council. With funding from the Bush Foundation, the South Dakota Arts Council established Arts Leadership Grants to assist South Dakota nonprofit arts organizations in the development of a two-year project meeting specific statewide arts needs.

Funding from the Arts Leadership Grant since July 2001 has allowed the South Dakota Art Museum staff to develop a promotional program supporting South Dakota artists selected to exhibit works at the Museum. Increasing public awareness and recognition of these artists is one of the foremost goals of the exhibition series. The funding has also helped to address the issues of transportation expenses for the artists and their artwork.

As a result of the *South Dakota Artist Series* exhibitions, a total of twelve artworks have been sold from the galleries, five of those were purchased for the Art Museum's permanent collection.

Artists scheduled for current and upcoming South Dakota Artist Series exhibitions include **Bob H. Miller:** *Sleeping Sickness* (July 2-November 3, 2002); **Mo Neal & Alan Montgomery** (July 10-October 10, 2002); **Bruce Preheim** (October 20, 2002-January 15, 2003); **Ariadne Albright & Terri McGaffin:** *Dueling Realities* (November 13, 2002-March 16, 2003); **Mary Selvig & Tom Shields** (January 30-May 30, 2003); **Tom Dempster:** *Faces of Culture* (March 5-June 22, 2003); and **Jean Larsen & Lisa Shoemaker** (June 11-October 20, 2003).



Above: *Tornberg's Rock*, 2002, acrylic on oak, Jean Larsen

Right: *Landscape*, oil on paper, Tom Shields

Below: *C#334*, 1995, Bob H. Miller



Above: *Faces of Culture*, Tom Dempster

Recent Acquisitions

The South Dakota Art Museum Board of Trustees' acquisitions committee has accepted several works of art into the Museum's permanent collection during recent months.

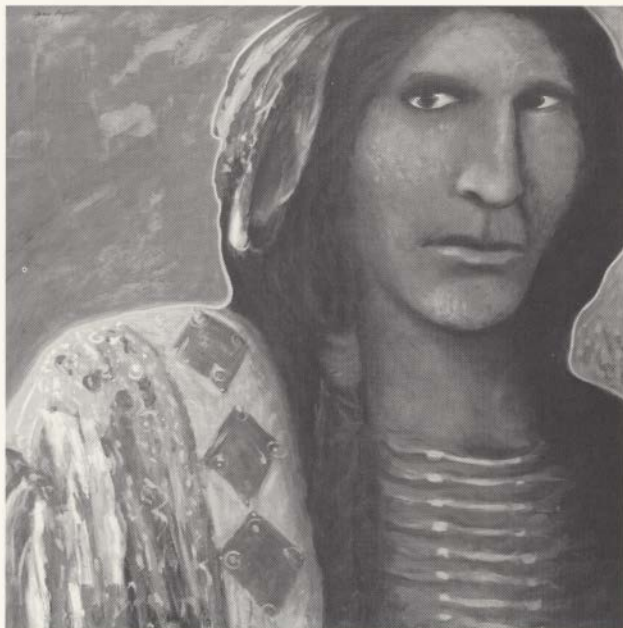
Exhibition curator John Rychtarik presented the Museum with a Lakota feather bustle. It is child-size and made to be worn for traditional dance.

Three pieces were purchased and donated to the Museum in memory of dear friend and supporter of the South Dakota Art Museum, Kay Cheever. The works selected include the painting, *Creation Series #2*, by Gary Big Bear of Sioux City, and two wood sculptures, *Zippity Do Da* and *Arthur* by John Peters of Sioux Falls.

A large-scale oil painting by Huron, South Dakota, artist James Bryant is entitled *Portrait of David Crowe*. It was donated to the Museum as a gift from the artist and the South Dakota Arts Council, with funds from the State of South Dakota, through the Department of Education and Cultural Affairs, and the National Endowment for the Arts.

Scarlet, a found object sculpture by Jerry Ross Barrish of San Francisco, California, was shown in the recent *Dames* exhibition. It was then purchased by a friend of the artist and donated to the South Dakota Art Museum.

The South Dakota Art Museum is very grateful for these generous gifts of artwork that help to fulfill the Museum's mission to collect, preserve, and exhibit art that reflects the creative nature of humanity.



Portrait of David Crowe, James Bryant

Fall Docent Training

October 1 - Connecting Points

9:00 a.m.-4:30 p.m. Docent Workshop
\$45 fee, Michael Jeanne Nelson

Sponsored in part by the South Dakota Arts Council with funds from the State of South Dakota, through the Department of Education and Cultural Affairs, and the National Endowment for the Arts; and the South Dakota Humanities Council, an affiliate of the National Endowment for the Humanities.

October 8 - Harvey Dunn

9:30 a.m. coffee, 10:00 a.m. program
John Rychtarik, Exhibition Curator

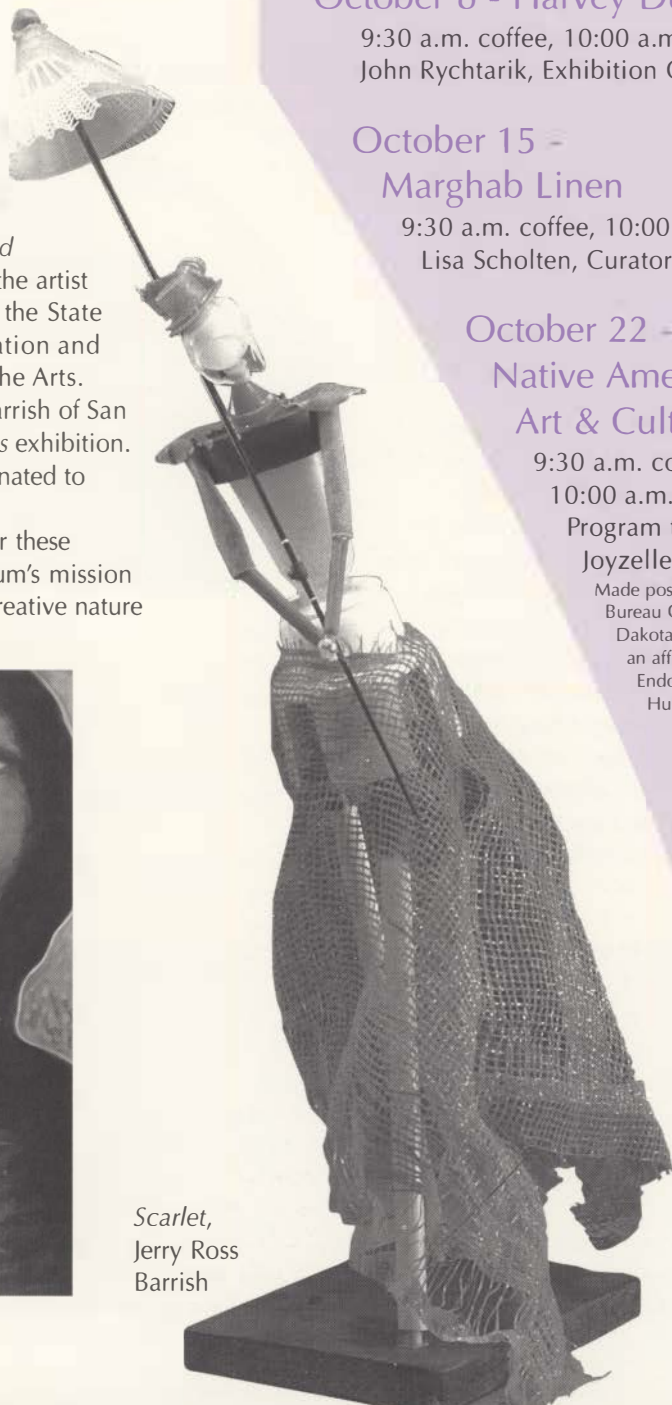
October 15 - Marghab Linen

9:30 a.m. coffee, 10:00 a.m. program
Lisa Scholten, Curator of Collections

October 22 - Native American Art & Culture

9:30 a.m. coffee,
10:00 a.m. guild meeting
Program to follow,
Joyzelle Godfrey

Made possible by a Speakers
Bureau Grant from the South
Dakota Humanities Council,
an affiliate of the National
Endowment for the
Humanities.



Scarlet,
Jerry Ross
Barrish

Connecting Points

Docent Training Workshop

*Helping Visitors Learn
through Personal Connections*

The South Dakota Art Museum will host a day-long Docent Training Workshop on Tuesday, October 1, from 9 a.m.-4:30 p.m. Focusing on the dynamics of giving more effective tours, the information presented at the workshop will be appropriate to any type of museum or facility that presents tours to public groups.

Instructor Michael Jeanne Nelson, Museum Education Advisor from Austin, Texas, has over 10 years of experience in the field of museum education. During her 5 years as curator of education at the Leigh Yawkey Woodson Art Museum in Wausau, Wisconsin, she initiated the progression from lecture-based touring to an interactive approach based on education theory.

Nelson received her Bachelor of Arts degrees in both Humanities and Mass Communications from Saint Mary's University of Minnesota and her Master of Arts degree in Art History from the University of Notre Dame. She has presented at museums and conferences throughout the United States, including several presentations to the National Art Education Association Conferences and the Midwest Museum's Conferences.

The workshop schedule is as follows:

9:00 a.m. – Check-in and Continental Breakfast (included)

9:30 a.m. – Welcome and Introduction

9:45 a.m. – Session I

Creating Teachable Moments:

Strategies for Touring with Children

Michael J. Nelson

Current learning theory emphasizes that more meaningful learning takes place when students directly participate in an experience and develop personal connections with the material being covered. This session will provide docents an opportunity to become more familiar with research on learning as well as explore ways of practically applying the research while on tour in the galleries. Docents will be given time to try new approaches and share ideas in the galleries.

12:15 pm. – Executive Box Lunch (included)

1:15 pm – Session II

Engaging High School Students and Adults through Personal Connections

Michael J. Nelson

Encouraging high school students (and adults) to be interactive during a tour can be a challenging experience for docents. This session will take participants through three basic steps that can be used with older audiences to help them more actively participate in the tour, and as a result make more personal and meaningful connections with objects. Through information, modeling of approach, and

practice time in the galleries, docents will be given the tools to implement this three-step technique comfortably and easily on tours at their own museums.

4:15 p.m. – Conclusion and Questions

The workshop registration fee is \$45 including materials, continental breakfast, and executive box lunch.

We invite you to join us for a full-day session designed especially for museum docents, curators, teachers, and others who lead group tours. Through presentations, discussion, and hands-on gallery activities, participants will explore how to help visitors of all backgrounds and ages make meaningful connections in the galleries, and as a result, take more away from the museum visit. Participants will learn practical touring approaches and receive handouts to assist in implementing these types of activities at any type of museum.

Pre-registration is required, as space is limited. Please call the South Dakota Art Museum at 605-688-5423 for information or registration.

This workshop is supported in part by the South Dakota Humanities Council, an affiliate of the National Endowment for the Humanities, and the South Dakota Arts Council with funds from the state of South Dakota, through the Department of Education and Cultural Affairs, and the National Endowment for the Arts.

Name _____

Address _____

City, State, Zip _____

Telephone _____

E-mail _____

Organization _____

\$45.00 Payment per person enclosed: Check Mastercard Visa

Account Number: _____

Expiration Date: _____

Signature: _____

(Required on charges. Credit card charges will be processed promptly upon receipt.)

Pre-Registration required. Space is limited!

By mail: South Dakota Art Museum, Medary Avenue at Harvey Dunn Street Box 2250, South Dakota State University, Brookings, SD 57007

By Fax: (605) 688-4445

By Telephone: (605) 688-5423

Cancellations received at least 10 working days prior to the workshop will receive full refunds. Cancellations received less than 10 working days before the workshop will receive a 60% refund. No shows are not eligible for refunds. Substitutions may be made at any time.

Fall Workshops

Both children and adults have the opportunity this fall to learn new skills and to have fun creating! All classes and workshops are held in the South Dakota Art Museum Multipurpose Room. Pre-registration and pre-payment are required. Call the Museum Office at 688-5423 for information.

KID'S WORKSHOPS

Watercolor Painting

September 11, Wednesday,
2:30-4:30 p.m., Ages 9-13,
\$12 members, \$15 nonmembers

Artist Lisa Shoemaker from Sioux Falls will be on hand to demonstrate the basic techniques common to traditional watercolor painting. Students will also learn some nontraditional techniques and be encouraged to try their own ideas. Materials included. Pre-register by September 6.

Flip-Book Animation

September 18, Wednesday,
2:30-4:30 p.m., Ages 9-13,
\$12 members, \$15 nonmembers

Bob H. Miller whose exhibition *Sleeping Sickness* is currently in the Museum Gallery, helps students explore the concepts of visualization and movement while creating their own animated flip-books. Materials included. Pre-register by September 13.

Finger Weaving

October 9, Wednesday,
2:30-4:30 p.m., Ages 8-12,
\$12 members, \$15 nonmembers

Learn to weave with your fingers! Fun and portable, finger weaving is a fascinating and ancient craft. Fiber artist Victoria Hanna will teach the basics of construction and design. Students will finish a woven piece suitable for use as a bookmark or bracelet with lots of ideas for more! Please specify a general color preference when you register. Yarn and equipment included. Pre-register by September 27.

Learning to Crochet

October 16 & 23 (2 sessions),
Wednesdays, 2:30-4:30 p.m.
Ages 8-12, \$20 members,
\$25 nonmembers

Fiber artist Victoria Hanna teaches the basic crochet stitches and how to use them to create many beautiful and useful items. Students will be introduced to the building blocks of crochet and then choose a small project to finish. Yarn and equipment included. Please specify a general color preference when you register. Pre-register by October 4.

Silk Painting

November 6 & 13 (2 sessions),
Wednesdays, 2:30-4:30 p.m.
Ages 8-12, \$20 members,
\$25 nonmembers

Come learn how to paint on silk! You can make your very own suncatcher with brightly colored dyes. Textile artist Ann Taecker will incorporate lessons in color theory and design composition into a fun project to take home. Materials are included. Pre-register by November 1.

ADULT WORKSHOPS

Basket Weaving Workshop

September 21, Saturday,
9:00 a.m.-4:00 p.m.
Bring a sack lunch
\$40 members, \$50 nonmembers,
Ages 13 and up

Fiber artist Patti Monahan will demonstrate and teach students to weave a beautiful and useful napkin basket. This class is suitable for beginners. Materials are included, tools are not. A tool/equipment list will be provided to each participant upon registration. Pre-register by September 14.

"Morning Mittens" Basic Knitting

October 12, 19, & 26 (3 sessions),
Saturdays, 10:00 a.m.-12:00 noon
\$40 members, \$50 nonmembers,
Ages 13 and up

Knit a scrumptious pair of fuzzy, warm mittens for yourself or a loved one during this fun beginning class. Knitting basics

will be gently introduced by knitting expert, Victoria Hanna. No knitting experience required. Yarn, knitting needles and yarn needle included. Please specify a general color preference when you register. Pre-register by October 2.

"Granny Squares" Basic Crochet

October 12 & 19 (2 sessions),
Saturdays, 1:00-3:00 p.m.
\$30 members, \$37.50 nonmembers,
Ages 13 and up

This square isn't just for grannies! Learn all the fun and creative possibilities contained in this fascinating crochet technique. A great on-the-go project. Fiber artist Victoria Hanna will discuss materials and project ideas while your hands are busy creating! Yarn, crochet hook, and yarn needle are included. Please specify a general color preference when you register. Pre-register by October 2.

"Beaded Creations" Crochet

October 26, Saturday, 1:00-3:00 p.m.
\$20 members, \$25 nonmembers

Learn an easy crochet technique with a sophisticated twist! This simple stitch uses a fine silk yarn and seed beads. The end result is stunning! Instructor Victoria Hanna will share easy start to finish tips and tricks for a perfect, non-stretching cord suitable for fine jewelry, buttons, or trim. Use your imagination! Beads, yarn, and crochet hook are included. Please specify a general color preference when you register. Pre-register by October 16.

Painted Silks

November 16, Saturday,
10:00 a.m.-4:00 p.m.,
Bring a sack lunch
\$40 members, \$50 nonmembers,
Ages 13 and up

Textile artist Ann Taecker will share the techniques she uses to create the beautiful silk scarves that are sold in the South Dakota Art Museum Gift Store! You will learn the basics of color theory and Resist Technique Silk Painting to create your own one of a kind masterpiece of wearable art. Pre-register by November 12.

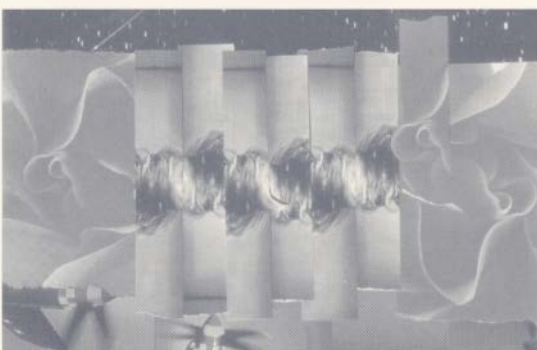
calendar of events



Blow, 2000, Mo Neal



Scrnsht. II, Alan Montgomery



C#398, 1997, Bob H. Miller

SEPTEMBER

11 — Kid's Creative Watercolor Painting,
Lisa Shoemaker, Multipurpose Room
Ages 9-13, 2:30-4:30 p.m.
\$12 members, \$15 nonmembers
Pre-register by September 6

18 — Kid's Flip Book Animation
Bob H. Miller, Multipurpose Room
Ages 9-13, 2:30-4:30 p.m.
\$12 members, \$15 nonmembers
Pre-register by September 13

19 — South Dakota Artists' Reception
Bob H. Miller, Alan Montgomery
and Mo Neal
4:30-7:00 p.m., Gallery Talks
5:30 p.m.

21 — Adult Basket Weaving Workshop
Patti Monahan, Multipurpose Room
Bring sack lunch
9:00 a.m.-4:00 p.m.
\$40 members, \$50 nonmembers
Pre-register by September 14

**24 — South Dakota Art Museum Volunteer
Guild Meeting**
9:30 a.m. coffee,
10:00 a.m. meeting & program
"South Dakota in Vintage Postcards"
by Richard Popp, Auditorium

**25 — Dakota Reader
Performance**
Kevin Locke
Native American Dance &
Music
4:00 p.m. Storytelling
Presentation
7:00 p.m. Gallery
Performance

26 — Northern Plains Tribal Arts Presentation
"Prisons of Image: Examining Racial
Distortions in Sports and Media"
NPTA Juror Charlene Teters
7:00 p.m., Auditorium

OCTOBER

**1 — "Connecting Points" Docent Training
Workshop**
Michael Jeanne Nelson, Museum
Education Advisor
9:00 a.m.-4:30 p.m.,
Multipurpose Room
\$45 fee for both members &
nonmembers
Includes materials, continental breakfast
& lunch

8 — Harvey Dunn Docent Training
John Rychtarik, Exhibition Curator
9:30 a.m. coffee, 10:00 a.m. program
Auditorium

9 — Kid's Finger Weaving
Victoria Hanna, Multipurpose Room
Ages 8-12, 2:30-4:30 p.m.
\$12 members, \$15 nonmembers
Pre-register by September 27

10 — Kevin Locke
Native American Dance & Music
7:00 p.m. Gallery Performance

**12 — "Morning Mittens"-Basic Knitting
for Adults**
Victoria Hanna, Multipurpose Room
Ages 13 and up, 10:00 a.m.-12:00 a.m.
\$40 members, \$50 nonmembers,
pre-register by October 2
3 sessions (October 12, 19 & 26)

**12 — "Granny Squares"-Basic Crochet
for Adults**
Victoria Hanna, Multipurpose Room
Ages 13 and up, 1:00-3:00 p.m.
\$30 members, \$37.50 nonmembers,
pre-register by October 2
2 sessions (October 12 & 19)

calendar of events



Leonard in his Pool Hall,
Bruce Preheim



Morning, acrylic on canvas,
2002, Ariadne Albright



Cross Country, oil on canvas, 2000,
Terri McGaffin

15 — Marghab Linen Docent Training
Lisa Scholten, Curator of Collections
9:30 a.m. coffee, 10:00 a.m. program
Auditorium

16 — Kid's Learning to Crochet
Victoria Hanna, Multipurpose Room
Ages 8-12, 2:30-4:30 p.m.
\$20 members, \$25 nonmembers,
pre-register by October 4
2 sessions (October 16 & 23)

17 — Fall Film Series
Incident at Oglala
7:30 p.m., Auditorium
\$3.50 Admission, \$2.00 with
student I.D.

19 — "Morning Mittens" continues
10:00 a.m. - 12:00 noon
(Second Session)

19 — "Granny Squares" continues
1:00 -3:00 p.m.
(Second Session)

**22 — South Dakota Art Museum Volunteer
Guild Meeting and Docent Training**
9:30 a.m. coffee, 10:00 a.m.
meeting & program
"Native American Art & Culture,"
Joyzelle Godfrey, Auditorium

22 — Dakota Reader Performance
7:00 p.m., Auditorium
\$3.50 Admission, \$2.00
with student ID

**23 — Kid's Learning to
Crochet continues**
2:30 - 4:30 p.m.
(Second Session)

**24 — Tingarri Aboriginal
Art Opening Reception**
4:30-7:00 p.m.
Gallery Talk at 5:30 p.m.
by exhibit organizer,
Marie Craig

24 — Fall Film Series
Thunderheart
7:30 p.m., Auditorium
\$3.50 Admission, \$2.00 with student ID

26 — "Morning Mittens" continues
10:00 a.m. - 12:00 noon
(Third session)

26 — "Beaded Creations" Crochet
Victoria Hanna, Multipurpose Room
Ages 13 and up, 1:00-3:00 p.m.
\$20 members, \$25 nonmembers
pre-register by October 16

31 — Dakota Reader Presentation
"Fiftieth Anniversary Production of War
of the Worlds"
7:00 p.m., Auditorium

NOVEMBER

6 — Kid's Silk Painting
Ann Taecker, Multipurpose Room
Ages 8-12, 2:30-4:30 p.m.
\$20 members, \$25 nonmembers,
pre-register by November 1
2 Sessions (November 6 & 13)

7 — Fall Film Series
The Doe Boy
7:30 p.m., Auditorium
\$3.50 Admission, \$2.00 with student ID

8 — Fall Film Series
High Horse
7:30 p.m., Auditorium
\$3.50 Admission, \$2.00 with student ID

13 — Kid's Silk Painting continues
(Second Session)

15 — South Dakota Artists' Reception
Bruce Preheim, Ariadne Albright
& Terri McGaffin
4:30-7:00 p.m.,
Gallery Talks at 5:30 p.m.

calendar

of events



16 — Painted Silks Workshop

Ann Taecker, Multipurpose Room
Age 13 and up,
10:00 a.m.-4:00 p.m.
Bring sack lunch, pre-register by
November 12
\$40 members, \$50 nonmembers

26 — South Dakota Art Museum Volunteer Guild Meeting

9:30 a.m. coffee,
10:00 a.m. meeting & program
"Members Show & Tell," Auditorium

DECEMBER

7 — Australian Didjeridoo Workshop

Paul Taylor, Multipurpose Room
All Ages, 10:00 a.m.-12:00 noon
\$12 members, \$15 nonmembers,
pre-register by December 2

**7 — Dakota Reader Performance
Australian Music and Stories from
the Outback**

Paul Taylor, Auditorium, 7:00 p.m.

10 — South Dakota Art Museum Volunteer Guild Holiday Party

10:00 a.m. at Community Cultural
Center's "Festival of Trees"

FEBRUARY

6 — Film Series

The Business of Fancysdancing
7:30 p.m., Auditorium
\$3.50 Admission, \$2.00 with student ID

**14 — South Dakota Artists' Reception
Mary Selvig & Tom Shields**

4:30-7:00 p.m., Gallery Talks
at 5:30 p.m.

MARCH

13 — Film Series

The Fast Runner
7:30 p.m., Auditorium
\$3.50 Admission, \$2.00 with student ID

20 — Film Series

To be announced
7:30 p.m.,
Auditorium
\$3.50 Admission,
\$2.00 with student
ID

**25 — South Dakota Art
Museum Volunteer
Guild Meeting**

9:30 a.m. coffee,
10:00 a.m. meeting
& program
"Touring France," by Pat Reger &
Mary Haug
Auditorium

**27 — Artists' Reception,
Robert Schwieger & Tom Dempster**

4:30-7:00 p.m., Gallery Talks
at 5:30 p.m.

APRIL

22 — South Dakota Art Museum Volunteer Guild Annual Meeting & Brunch

9:30 a.m., Multipurpose Room
"The Missouri," by Greg Latza
Auditorium



Faces of Culture, Tom Dempster



Paul Taylor, Australian
Story Teller, photo by
David Romtvedt



Hat,
Clay, wood, wire, 2001, Mary Selvig



Opus 24 Lancaster,
screenprint monotype,
Robert Schwieger

exhibits calendar



2002

July 2-November 3

Bob H. Miller: Sleeping Sickness

July 3-October 10

Oscar Howe: Dancers

July 10-October 10

*South Dakota Artist Series:
Mo Neal & Alan Montgomery*

July 10-October 10

*From the Collection of the South
Dakota Art Museum*

August 12-January 5, 2003

Marghab Linens: Seafaring Designs

August 30-January 19, 2003

Harvey Dunn, Illustrator

October 20-January 15, 2003

*South Dakota Artist Series:
Bruce Preheim*

October 21-February 23, 2003

Australian Tingari Aboriginal Art

October 21-February 23, 2003

A Different View: EROS Data Center

November 13-March 16, 2003

*Ariadne Albright & Terri McGaffin:
Dueling Realities*

December 23-June 23, 2003

Native American Beadwork

2003

January 14-June 1

The Women Behind Marghab

January 30-May 30

*South Dakota Artist Series:
Mary Selvig & Tom Shields*

January 30-June 8

Harvey Dunn, Feminine Images

March 5-June 22

Tom Dempster: Faces of Culture

March 5-March 7, 2004

Paul Goble: A Closer Look

March 25-July 27

Robert Schwieger

June 7-September 21

The Men Behind Marghab

June 11-October 20

*South Dakota Artist Series:
Jean Larson & Lisa Shoemaker*

June 17-January 1, 2004

Harvey Dunn, War Works

June 30-December 30

Native American Quillwork

July 1 - November 2

Jeff Freeman

August 5-January 4, 2004

Folk Arts Exhibit

September 30-February 1, 2004

Marghab Linens: Floral Designs

October 28-January 25, 2004

*South Dakota Artist Series:
Jane Erickson & Denise DuBroy*

South Dakota State University
SOUTH DAKOTA  MUSEUM

Medary Avenue at Harvey Dunn Street
Box 2250, SDSU
Brookings, South Dakota 57007-0899
(605) 688-5423

E-mail: sdsu_sdsm@sdstate.edu
Web: sdartmuseum.sdstate.edu

Accredited by the American Association of Museums

Free public hours are:
Monday–Friday 10:00 a.m.–5:00 p.m.
Saturday 10:00 a.m.–4:00 p.m.
Sunday and holidays 12:00 p.m.–4:00 p.m.
(Closed on state holidays – please call ahead)



Ruth Brennan, Board of Trustees President

NEW Board Members

Five new members were welcomed to the South Dakota Art Museum Board of Trustees at the

summer meeting on July 12. New Board members include Tim Dougherty, Sioux Falls, South Dakota; Dr. Rolland Johnson, Monument, Colorado; Rita Larson, Fowler, Colorado; Pat Meyer, Brookings, South Dakota; and Dr. Susan Wischmeier, Aberdeen, South Dakota.

Other continuing Board members are Diane Anderson of Brookings, Phyllis Bell of DeSmet, Ruth Brennan of Rapid City, Sharon Casey of Chamberlain, Marilyn DeLong of St. Paul, Minnesota, South Dakota State University President Peggy Gordon Miller, Christine Hamilton of Kimball, South Dakota State University Dean of the College of Arts and Sciences Jerry Jorgensen, Maree Larson of Brookings, Larry Ness of Yankton, Jack

Stengel of Milbank, and Ann McKay Thompson of Pierre. Thank you to all of these Board members, especially to retiring Board Vice President Jack Stengel and retiring President Ann McKay Thompson for their many years of service and leadership.

Additionally, Ruth Brennan who joined the Board in 1999 was elected Board President. She will serve a three-year term assisted by Vice President Sharon Casey.

After 23 years, Ruth Brennan retired in 1998 from the position of Executive Director of the Rapid City Arts Council and Dahl Arts Center. Since then she has been active as the Project Director for a statewide Community Cultural Planning program; Statewide Coordinator for the Writer Reads partnership program; Statewide Coordinator for South Dakota Dance-on-Tour; Project Coordinator for the National Symphony Orchestra-South Dakota Tour, and South Dakota Project Coordinator for Arts Leadership South Dakota grant recipients.

In addition to her new duties as the South Dakota Art Museum Board of Trustees President, Ms. Brennan also serves on several other boards including Friends of South Dakota Public Broadcasting, America's Shrine to Music Museum, South Dakotans for the Arts, and the South Dakota Arts Council. She has been honored with a number of awards for her work with the arts in South Dakota.

Ruth Brennan's wealth of training and experience in arts administration makes her a natural choice for the leadership of the South Dakota Art Museum Board of Trustees. She states that "South Dakota has come light years in arts offerings, artist opportunities, and arts institutions in the past four decades. One of the major steps has been the South Dakota Art Museum, and now in its greatly expanded facility, the Museum's role in the state is greatly enhanced. It's exciting to be part of this growth!"

Auditorium Renovation

The South Dakota Art Museum Auditorium has undergone a total renovation during the summer months. Updated walls, flooring, lighting, and seating were a welcome change for students and visitors this fall. Michele Sage coordinated the project for South Dakota State University's Physical Plant Engineering Office.

A new ADA-approved ramp leading to the stage was installed and additional handicap-accessible seating was added.

"The whole room is lighter, brighter, and so much more inviting, said Lynn Verschoor, director of the Art Museum. "Staff, students, and visitors are very appreciative of the new environment."



Film series

Reel Images presents films by and about Native Americans in the Art Museum Auditorium at 7:30 p.m.

October 17 — *Incident At Oglala: The Leonard Peltier Story*
Directed by Michael Apted
Produced and narrated by Robert Redford

October 24 — *Thunderheart*
Directed by Michael Apted
Starring Val Kilmer, Graham Greene, and Sam Shepard

November 7 — *The Doe Boy*
Directed by Randy Redroad
Winner of the American Indian Motion Picture Award for Best Film

November 8 — *High Horse*
Directed by Randy Redroad

IMLS grant

Thanks to a grant from the federal Institute of Museum and Library Services (IMLS), the South Dakota Art Museum is able to purchase a

new sliding rack storage system to rehouse over 260 paintings and framed works on paper. This

rehousing project will improve the current storage facility and allow for safer and easier access to the artworks by curatorial staff. The goal of the project is to provide a protective environment for the storage of works of art by South Dakota and American artists.

In 1998, the Museum closed to undertake a complete renovation and expansion project that resulted in a new gallery and museum store on the main level and a new collection storage area on the lower level. Upon reopening in December of 2000, the new collection area was furnished with state-of-the-art Museum storage units thanks to a grant from the Larson Foundation. This allowed for improved storage of three-dimensional objects including the Native American collection, the sculpture collection, and the Marghab Linen collection.

In 2001, the National Endowment for the Humanities funded the purchase of six flat file cabinets and the archival materials needed to rehouse the Paul Goble illustration collection which consists of 625 original ink and watercolor paintings from Goble's illustrated children's books.

Now, due to the initiative of South Dakota Art Museum's curator of collections, Lisa Scholten, IMLS has elected to support the purchase of the sliding rack painting storage system with a \$28,367 grant award.

"In 1998, the Museum initiated a more proactive and preventative course of action to ensure the well being of the permanent collection," says Scholten. "This was accomplished through the implementation of a long-range preservation plan that identified the rehousing of all of the Museum's collections as a critical need."

"The IMLS grant allows us to accomplish a major goal of our preservation plan—safe and responsible storage of all of our collections according to the highest museum guidelines and standards."

IMLS is a federal grantmaking agency located in Washington, D.C. that fosters leadership, innovation, and a lifetime of learning by supporting museums and libraries.



GFWC Brookings Civic League Donation

Thank you to the General Federation of Women's Clubs of South Dakota Brookings Civic League members who recently donated \$12,161 to the South Dakota Art Museum to help fund educational programming and touring exhibits.

The GFWC has played an integral role in the establishment and continued support of the South Dakota Art Museum. At its first convention in Aberdeen in 1900, the GFWC (then called the South Dakota Federation of Women's Clubs) decided that its primary purpose would be to stimulate interest in the fine arts. Fifty years later, a group of GFWC members had assembled a few oil paintings and a sizeable collection of fine prints. They shared this collection with other clubs until its size became unmanageable and, therefore, the inspiration for the establishment of an art museum developed.

Serious discussion ensued on where to locate what is now known as the South Dakota Art Museum. Five sites lobbied to have the center located in their community: Vermillion, Huron, Spearfish, Pierre and Brookings. In the end, South Dakota State University in Brookings was selected.

GFWC agreed to raise \$200,000 of the \$500,000 needed to build the Museum and the facility was formally dedicated on May 31, 1970. Six years later, the American Association of Museums recognized the excellence of the South Dakota Art Museum and it became the first museum of any kind to gain accreditation in South Dakota. During the mid 90's, the Museum embarked on a campaign to raise \$1.9 million to renovate and increase the size of the original building by 8,500 square feet. It closed for construction in September 1998 and reopened December 2, 2000, as a new state-of-the-art facility.

Since its beginning, the South Dakota Art Museum has been involved in collecting, researching, preserving and displaying the art of South Dakota and the region. Today, the collections consist of 5,735 objects, many of which were donated by the General Federation of Women's Clubs.

The GFWC of South Dakota has consistently been represented on the South Dakota Art Museum Board of Trustees and club members have made annual donations and special contributions, including the purchase of inscribed bricks in front of the Museum to memorialize GFWC clubs and club members.

For this most recent donation, the GFWC Brookings Civic League raised more than \$5,000 for the Museum through its annual collectible and craft sales, which GFWC of South Dakota matched with money from the State Art Fund.

Current Museum *Memberships* As of June 31, 2002

Supporter

Bill & Rita Larson, Fowler, CO

Donor

Marian Barnes, Brookings, SD

Max & Marilyn DeLong, St. Paul, MN

Contributor

Robert & Phyllis Bell, DeSmet, SD

Dr. Sherwood & Betty Berg,
Brookings, SD

Terry & Sharon Casey, Chamberlain, SD

Camille Crooks, Volga, SD

Dana Crooks, Brookings, SD

David & Naomi Gilkerson, Brookings, SD

Tom & Judy Martin, Brookings, SD

David & Patricia Meyer, Brookings, SD

Charles & Margaret Roberts,
Brookings, SD

Stephanie Russo, Lexington, KY

Jerry & Gail Simmons, Sioux Falls, SD

Joseph & Signe Stuart, Santa Fe, NM

Calvin Vaudrey, Litchfield Park, AZ

Family

Lynn & Diane Anderson, Brookings, SD

Bob & Becky Baer, Brookings, SD

Philip & Winifred Baker, Brookings, SD

Lawrence & Phyllis Bartling,
Brookings, SD

Tom & Kay Becker, Brookings, SD

John & Mary Bibby, Brookings, SD

Dennis & Darla Bielfeldt, Brookings, SD

Jacquelin Blackford, Brookings, SD

David & Sharyn Bozied, Brookings, SD

Burt & Delores Brage, Brookings, SD

Tim & Peggy Brown, San Francisco, CA

Larry Browning, Brookings, SD

Robert & Jeanette Carey, Rockport, TX

Dr. & Mrs. John A. Carpenter, Athens, GA

Paul & Evelyn Carson, Brookings, SD

Bill & Charlotte, Carver, Sioux Falls, SD

Gene & Margy Chamberlin, Ames, IA

Gary & Rosemary Chappell, Custer, SD

Chris & Mary Chase, Brookings, SD

Herb & Sydna Cheever, Minneapolis, MN

Winifred Cheever, Brookings, SD

Carolyn Clague & Dennis Hopfinger,
Brookings, SD

Walter & Marjorie Conahan,
Sioux Falls, SD

Stanley & Neva Jean Corlett,
Brookings, SD

Brian & Lynn Darnall, Brookings, SD

Lloyd & Maxine Darnall, Brookings, SD

William & Rebecca Daugherty,
Brookings, SD

Koss & Teresa Delfinis, Brookings, SD

Clarence & Margaret Denton,
Brookings, SD

Albert & Thelma Dittman, Brookings, SD

Robert & Katherine Doares, Salisbury, NC

Chandradhar & Prahba Dwivedi,
Brookings, SD

Dean & Joan Dybing,
Grand Junction, CO

Richard & Esther Edie, Brookings, SD

Royce & Ruth Emerick, Brookings, SD

David & Jan Evans, Brookings, SD

Anne Fennell & Gary Yarrow,
Brookings, SD

Robert & Jesse Finch, Rochester, MN

Robert & Geneva Foster, Brookings, SD

Jerome & Mary Freeman, Brandon, SD

Henry & Alice Gehrke, Brookings, SD

B.J. & Helen Gottsleben, Brookings, SD

Nels & DeAnna Granholm,
Brookings, SD

Fritz Gritzner, Brookings, SD

Christine Hamilton, Kimball, SD

R. Wayne Hamilton, Armour, SD

Lloyd & Roberta Hansen, Brookings, SD

Nadim & Seham Hassoun, Brookings, SD

Kenneth & Mary Haug, Brookings, SD

Virgil & Ruth Herriott, Brookings, SD

Ed & Joan Hogan, Brookings, SD

Dr. Richard & Joanie Holm,
Brookings, SD

Gary & Joan Isenberg, Brookings, SD

Alan & Carole Johnson, Brookings, SD

David & JoAnn Johnson, Brookings, SD

Nicholas & Panayota Karras, Huron, SD

Daniel & Michele Kemp, Brookings, SD

Kevin & Lucy Kephart, Brookings, SD

Clyde & Dee Kirkbride, Brookings, SD

Randy & Sue Knutzen, Brookings, SD

Laverne & Loretta Kortan, Brookings, SD

Aelred Kurtenbach, Brookings, SD

Jay & Kathy Larsen, Brookings, SD

Dale & Pat Larson, Brookings, SD

David & Mary Leonard, Boulder, CO

Charles & Maxine Lingren, Brookings, SD

George & Roberta Lohr, Littleton, CO

Doug & Rosie Malo, Brookings, SD

Jack & Marty Marken, Brookings, SD

David & Linda Marquardt, Brookings, SD

Steve & Judy Marquardt, Brookings, SD

Roy & Delpha Masson, Brookings, SD

Stuart & Kathy Melby, Brookings, SD

Bob & Peggy Miller, Brookings, SD

John & Mary Moe, Columbus, IN

James & Dorothy Morgan, Brookings, SD

Stewart & Josie Moyer, Brookings, SD

Stanley & Barbara Nelson, Harris, MN

Tim & Laurie Nichols, Brookings, SD

Robert & Linda Off, Kansas City, MO

David & Roberta Olson, Brookings, SD

Gordon & Jeri Ommen, Brookings, SD

Kenneth & Dolores Ostroot,
Brookings, SD

Homer & Lillian Osvog, Brookings, SD

David Pearson, Edina, MN

Robert & Lillian Pengra, Brookings, SD

Otis & Kathryn Penrod, Brookings, SD

Roger & Elise Peterson, Dallas, TX

Lawrence & Catherine Piersol,
Sioux Falls, SD

Phillip & Darlene Plumart, Brookings, SD

James & Betsy Pollock, Pierre, SD

Emil & Chloe Reutzel, Norfolk, NE

Greg & Nancy Rexwinkel, Brookings, SD

Jim & Merlynn Rezek, Sioux Falls, SD

Fred & Ardyne Rittershaus, Brookings, SD

Gail & Rosemary Robertson,
Brookings, SD

John & Kay Romans, Urbana, IL

Bob & Madeleine Rose, Brookings, SD

Alfred & Deanna Rude, Brookings, SD

John & Alla D. Ruffolo, Brookings, SD

Duane & Phyllis Sander, Brookings, SD

Joe Santos, Brookings, SD

Greg & Kathy Satter, Sioux Falls, SD

Bill & Lisa Scholten, Brookings, SD

Robert & Jacqueline Sexauer,
Brookings, SD

Mr. & Mrs. Kendall Sheldon,
Watertown, SD

Mark & Peggy Shlanta, Sioux Falls, SD

Jack & Linda Stengel, Milbank, SD

Michael & Judy Strom, Watertown, SD

Raymond Sturdevant, Brookings, SD

Dean & Harriet Swedlund, Brookings, SD

Bob & Cindy Swinson, Brookings, SD

John & Lynnette Taylor, Brookings, SD

Ronald & Jan Tesch, Brookings, SD

Robert & Mary Thompson, Lindstrom MN

Carl & Silva Trautman, Brookings, SD

Craig & Della Tschetter, Brookings, SD

Evert & Marylka Van der Sluis,
Brookings, SD

Gary & Sharon Van Riper, Brookings, SD

Lynn Verschoor & Roy Ervin,
Brookings, SD

Bill & Nancy Wadsworth, Brookings, SD

Phillip Wagner, Brookings, SD

Merritt G. & Pamela Warren,
Brookings, SD

Mr. & Mrs. Kenneth Way, Watertown, SD

Mason & Janie Wheeler, Aurora, SD

Everett & Doris White, Brookings, SD

Zeno W. Wicks, III & Roxanne Savaryn
Wicks, Brookings, SD

Paul & Patricia Wieland, Brookings, SD

Louis & Elizabeth Williams,
Brookings, SD

Richard & Donna Wilson, Brookings, SD

Milan & Judith Zivanovic, Brookings, SD

Zora Colburn, Brookings, SD

Virginia Congers, Brookings, SD

Irene A. Cordts, Faulkton, SD

Beverly Craddock, Brookings, SD

Rich Cutler, Sioux Falls, SD

Norma Dannenbring, DeSmet, SD

Mrs. Nathelle DeHaan, Brookings, SD

Emma Dimit, Brookings, SD

Kathleen Donovan, Brookings, SD

Martin Draper, Brookings, SD

Janice Ebersdorfer, Mitchell, SD

Mrs. Keith Eilers, Huron, SD

Audrey Esteban, St. Paul, MN

Julia Finley, Brookings, SD

First National Bank, Brookings, SD

Loretta Foster, Brookings, SD

Susan Fredrickson, Brookings, SD

Gerald Frick, Fergus Falls, MN

Norman Gambill, Brookings, SD

Sandra Gordon, Fargo, ND

Louise Guild, Brookings, SD

Merle Gunsalus, Brookings, SD

Virginia Hallberg, Cleveland, OH

Beth L. Hanson, Brookings, SD

Mildred S. Hendrick, Kalamazoo, MI

Susie Hendrickson, Brookings, SD

Lori Hendrickx, Brookings, SD

Lillian Hellickson, Brookings, SD

Ryan Howlett, Brookings, SD

Dave Huebner, Bushnell, SD

Joe Isakson, Sioux Falls, SD

Janet Johnson, Brookings, SD

Hildegard Johnson, Brookings, SD

Robert Jones, Brookings, SD

Jean Jostad, Brookings, SD

Mildred Juel, Brookings, SD

Jeff Jung, Brookings, SD

Pam Kedl, Brookings, SD

Michael Keller, Brookings, SD

P. Jean Kincaid, Laurinburg, NC

Barb Koenders, Brookings, SD

Delores Koepsell, Brookings, SD

Mark Kozel, Sioux Falls, SD

Robert Kruger, Mayville, ND

Roxanne Kukuk, Watertown, SD

Marianne Larsen, Sioux Falls, SD

Maree Larson, Brookings, SD

Gerry Law, Clear Lake, SD

Ardelle Lundeen, Brookings, SD

Margaret Lytle, Brookings, SD

Les Mansfield, Cincinnati, OH

Dexter Martin, Brookings, SD

J. Walt McCarty, Brookings, SD

Ann McKay Thompson, Pierre, SD

Gordon Mydland, Lake Preston, SD

Kenneth Myers, Brookings, SD

Helen Naden Morgan, Brookings, SD

Curtis Nelson, Brookings, SD

Paula Nelson, Platteville, WI

Larry Ness, Yankton, SD

Mary O'Connor, Brookings, SD

Ella Ollenburg, Brookings, SD

Karen Olson, Salem, OR

Elaine Olson, Brookings, SD

Katherine Olson, Moorhead, MN

Anne Oparowski, Sunland, CA

Mary Perpich, Brookings, SD
Dr. Carol Peterson, Brookings, SD
Helen Peterson, Brookings, SD
Diane Pettinger, Watonsville, CA
Bob Putnam, St. Peter, MN
Florence Pyle, Lewisburg, PA
Connie Quirk, Brookings, SD
Debbie Renaas, Nunda, SD
Liz Rezek, Sioux Falls, SD
Diane Riedesel, Brookings, SD
Donna Ritter, Brookings, SD
Jean Rudd, Sioux Falls, SD
Marian Rude, Brookings, SD
Howard Sauer, Brookings, SD
Craig Scherf, Minneapolis, MN
Trudy Schmieding, Brookings, SD
Doris Schumacher, Brookings, SD
Mary Selvig, Sioux Falls, SD
Judy Smith, Brookings, SD
VJ Smith, Brookings, SD
Shirley Sneve, Sunderland, MA
Orville Stangl, Java, SD
Kathy Stelzer, Sioux Falls, SD
Larry Stine, Brookings, SD
Verna Sturdevant, Brookings, SD
Adelle Sudlow, Brookings, SD
Harriet Svec, White, SD
Delila Tompkins, Huron, SD
Ila Valentine, Fairburn, GA
Karen VanderWal, Brookings, SD
Nancy Van Dyke, St. Louis, MO
Sharon Van Schoiack, Denver CO
Cathrene Voelzke, Brookings, SD
Suzanne Volin, Sioux Falls, SD
Keith Wells, Lagrange, GA
Frederick C. Westin, Brookings, SD
Venita Winterboer, Brookings, SD
Charles Woodard, Brookings, SD
Kevin Woster, Sioux Falls, SD
Beryl Younger, Brookings, SD

Donors

Bricks

Jerry Abel, Brookings, SD
Robert & Joey Aldern, Sioux Falls, SD
John & Mary Askeew, Sioux Falls, SD
Maureen Barney, San Marcos, CA
Marian Barnes, Brookings, SD
Lawrence & Phyllis Bartling,
Brookings, SD
Helen Bechtold, Brookings, SD
Robert & Phyllis Bell, DeSmet, SD
Rodney & Fayne Bell, Brookings, SD
David Benfield, Brookings, SD
Dr. Sherwood & Betty Berg,
Brookings, SD
Ruth Brennan, Rapid City, SD
Hilton & Nelda Briggs, Brookings, SD
Brookings Chiropractic, Brookings, SD
Terry & Sharon Casey, Chamberlin, SD
Carolyn Clague & Dennis Hopfinger,
Brookings, SD
Irene Cordts, Faulkton, SD
Gloria Craig, Brookings, SD
Lloyd & Maxine Darnall, Brookings, SD
Max & Marilyn DeLong, St. Paul, MN
Clarence & Margaret Denton,
Brookings, SD
Arthur & Barbara Dickerson,
St. Paul, MN
Emma Dimit, Brookings, SD

Robert & Katherine Doares,
Salisbury, NC
Simon Donnelly, Manchester, England
Dean & Joan Dybing, Brookings, SD
Elmen Family Foundation,
Sioux Falls, SD
Royce & Ruth Emerick, Brookings, SD
Don Evenson, Arlington, SD
Evelyn Fee, Brookings, SD
Jerry & Mary Fiedler, Brookings, SD
Mary Fleming, Flandreau, SD
Bette Gerberding, Brookings, SD
David & Naomi Gilkerson,
Brookings, SD
GFWC of Brookings, Brookings, SD
GFWC Travelers Club, Chamberlain, SD
Wayne Hamilton, Armour, SD
Christine Hamilton, Kimball, SD
Sharon Hanson, Brookings, SD
K Janice Hauge Embry, Brookings, SD
Bernard & Elaine Hietbrink,
Bella Vista, AR
Dave & Patty Helgeland, Brookings, SD
Leslie High, Bryn Mawr, PA
Dr. Richard & Joanie Holm,
Brookings, SD
Ernest & Mildred Huggins,
Brookings, SD
Deronda Hunter, Adrian, MN
Roland & Deloris Jensen,
Minneapolis, MN
David & JoAnn Johnson, Amery, WI
Murray & Kathryn Johnson,
Watertown, SD
Dave & Julie Kappenman,
Rapid City, SD
Robert & Phyllis Karolevitz,
Mission Hill, SD
P Jean Kincaid, Laurinburg, NC
Clyde & Dee Kirkbride, Brookings, SD
Maree Larson, Brookings, SD
Hilda Lenocker, San Diego, CA
Bonnie Lievan, Minneapolis, MN
Stephen Lurvey, Brookings, SD
William & Margaret Lytle,
Brookings, SD
Steve & Judy Marquardt, Brookings, SD
Don Marshall, Brookings, SD
Ralph & Gayle Matz, Brookings, SD
Dr. Peggy Gordon Miller, Brookings, SD
John & Mary Moe, Columbus, OH
Virginia Mosley, Tenafly, NJ
Gordon Mydland, Lake Preston, SD
Glen & Doreen Nachtigal,
Brookings, SD
Larry Ness, Yankton, SD
Tim & Laurie Nichols, Brookings, SD
Ella Ollenburg, Brookings, SD
Elaine Olson, Brookings, SD
Gordon & Jeri Ommen, Brookings, SD
David Pearson, Edina, MN
Mary Perpich, Brookings, SD
Harold & Evie Platt, Brookings, SD
Jim & Merlynn Rezek, Sioux Falls, SD
Marilyn Richardson, Ivinnes, UT
Dorothy Rude, Brookings, SD
Stephanie Russo, Lexington, KY
Louise Rutherford, Chatham, MA
Ruth Schlobohm, Columbus, NE
Robert & Jacqueline Sexauer,
Brookings, SD

Mark & Peggy Shlanta, Sioux Falls, SD
Sigma Alpha Epsilon, Theta Chapter,
Brookings, SD
Clayton & Anella Southwick,
Rapid City, SD
Benjamin Spies, Watertown, SD
Orville Stangl, Java, SD
Jack & Linda Stengel, Milbank, SD
Larry Stine, Brookings, SD
Lawrence Stitt, Citrus Heights, CA
Raymond Sturdevant, Brookings, SD
Verna Sturdevant, Brookings, SD
Adele Sudlow, Brookings, SD
Harriet Svec, Brookings, SD
Marilyn Swanson, Brookings, SD
Harriet Swedlund, Brookings, SD
Jerry & Mira Sweeney, Brookings, SD
Ann McKay Thompson, Pierre, SD
Larry & Gail Tidemann, Brookings, SD
Carl & Silva Trautman, Brookings, SD
Craig & Della Tschetter, Brookings, SD
Sharon Van Schoiack, Denver, CO
Calvin Vaudrey, Litchfield Park, AZ
Rich & Jo Waldner, Brookings, SD
Lois Watson, Brookings, SD
Mr. & Mrs. Kenneth Way,
Watertown, SD
Deborah Wessells, Glen Moore, PA
Louis & Elizabeth Williams,
Brookings, SD
Gary Yarrow, Brookings, SD
Beryl Younger, Brookings, SD

Donors

Memorials

Jerry Abel

Merrit & Adriana Bates, Escondido, CA
James & Margaret O'Connell,
Northfield, MN

Jean Bartling

Jerry & Mary Fiedler, Brookings, SD

Kay Cheever

AFSCME Local 638, Mankato, MN
Lynn & Diane Anderson, Brookings, SD
Milton & Evelyn Anderson,
Sioux Falls, SD
Samuel Artz, Brookings, SD
Lawrence & Phyllis Bartling,
Brookings, SD
Eileen Bell, Brookings, SD
Olander & Sylvia Benson, Brandon, SD
Carol Bergeland, Sinai, SD
Elaine Berndt, Brookings, SD
Waldo & Connie Burrill, Forestburg, SD
Gene & Margy Chamberlin, Ames, IA
Gene & Jo Ann Cheever, Lead, SD
Herb & Sydna Cheever,
Minneapolis, MN
Winifred Cheever, Brookings, SD
David & Louise Crain, Brookings, SD
CrossThreads Fiberworks Guild of SD
Martha Davidsohn, Sioux Falls, SD
Robert & Mary Drouillard,
New Hope, MN
Richard & Esther Edie, Brookings, SD
Butler & Priscilla Eitel, Brookings, SD
Melba Ellis, Sioux Falls, SD
Evelyn Fee, Brookings, SD

Sarah Fee, Brookings, SD
Fiberworks Guild, Brookings, SD
Robert Fishback, Brookings, SD
Van Fishback, Brookings, SD
Mary Fiedler, Brookings, SD
Robert & Geneva Foster, Brookings, SD
Rita Gauer-Stubbe, Clear Lake, SD
David Gilkerson, Brookings, SD
Garry & Marge Grorud, Estelline, SD
Dorothy Haas, Volga, SD
Lavisia Haddow, Brookings, SD
Diane Hexem, Brookings, SD
Patricia Howell, Volga, SD
Ernest & MK Huggins, Brookings, SD
Kevin & Sherry Ishol, Brookings, SD
Mary James, Brookings, SD
Jerome Johnson, Brookings, SD
Jeanne Jones Manzer, Brookings, SD
Mildred Juel, Brookings, SD
Jeffrey & Carol Jung, Brookings, SD
Galen & Marlys Kelsey, Brookings, SD
Dee Kirkbride, Brookings, SD
Mr & Mrs Andrew L'amour,
Brookings, SD
Neva LaChance, Brookings, SD
Jay & Kathy Larsen, Brookings, SD
Marianne Larsen, Sioux Falls, SD
Gary & Pamela Larson, Brookings, SD
Judy Lepthein, Denver, CO
Charles & Maxine Lingren,
Brookings, SD
Bruce & Ila Lushbough, Brookings, SD
James & Carola Marking, Brookings, SD
Nona Marshall, Brookings, SD
Dean Martin, Brookings, SD
Susan McKinstry, White, SD
Robert & Patricia Merrill,
Rochester, MN
Jane Miller, Mill Valley, CA
Gordon Mydland, Lake Preston, SD
Lloyd & Mattie Olinger, Huron, SD
Joyce Pedersen, Colman, SD
AYvonne Perkins, Brookings, SD
Elaine Rietz, Brookings, SD
John & Joan Rychtarik, Sioux Falls, SD
Ruby Schulz, Brookings, SD
Melissa Scott-Mullins,
Albuquerque, NM
Robert & Norma Seerley,
Sun City West, AZ
Richard & Eileen Shane, Brookings, SD
Terry & Ann Spitzenberger,
Brookings, SD
Timothy & Alice Thornton, St Paul MN
Patricia Van Dyke, Sutherland, NE
Richard & LaRayne Wahlstrom,
Brookings, SD
Dee Watson, Brookings, SD
HL Webster family, Albuquerque, NM
Allen & Linda Whitaker, Brookings, SD
HD & AV Wickstrom, Brookings, SD
Louis & Elizabeth Williams,
Brookings, SD
Warren & Dorothy Williamson,
Brookings, SD
Richard & Donna Wilson,
Brookings, SD
Elsa Wood, Brookings, SD

South Dakota Art Museum Membership Application/Renewal

Our members are vital to the continued development of the South Dakota Art Museum, and, in turn, the Art Museum makes our members' lives much richer through the arts.

Basic Membership Benefits (Renewed Annually)

- 10% discount on Museum Store purchases.
- 20% discount on Museum classes and workshops.
- Subscription to the *South Dakota Art Museum News* and other Museum mailings.
- Recognition in the annual membership issue of the *News*.

Contributing Membership Benefits

In addition to your dues, your contribution to the Museum will help to purchase works of art and aid in Museum operations and programming. These contributions also fund publications, scholarly research on collections, conservation of art works, and their restoration. Contributing members receive all of the basic membership benefits plus the special benefits listed below.

Contributor (\$100 and above)

- Family membership for two adults and their children through age eighteen.
- Basic membership benefits.

Donor (\$500 and above)

- All benefits above, plus one free gift membership to a friend.
- Recognition for your level of giving on donor panels.

Supporter (\$1000 and above)

- All benefits above, plus one additional free gift membership to a friend.

Sustainer (\$5000 and above)

- All benefits above, plus receive recognition as a sponsor or co-sponsor of a SDAM exhibition or program selected in collaboration with the director.

Benefactor (\$10,000 and above)

- All benefits above, plus receive recognition as a sponsor or co-sponsor of two SDAM exhibitions or programs selected in collaboration with the director.

To join, simply fill out the attached form and mail it to the South Dakota Art Museum with your check or credit card information. Call the Museum Office at 688-5423 if you have questions regarding membership or wish to pursue other ways of giving.

Memberships purchased between March and August have renewal dates of May 1 the following year. Memberships purchased between September and February have renewal dates of November 1 the following year.

Volunteer opportunities are available. Call 605-688-5423 for more information.



Full Name(s) _____
 Address _____
 City _____ State _____ Zip _____
 Telephone (____) _____
 E-mail _____

Please list children through age 18 to be included in a family or contributing membership:
 Name _____
 Birth Year _____
 Name _____
 Birth Year _____
 Name _____
 Birth Year _____

Basic Memberships

SDSU Student	FREE
Individual	\$30.00
Family	\$40.00
<i>(Up to two adults in one household and their children through age eighteen.)</i>	
Individual Senior Citizen, age 62 and over	\$25.00
Couple Senior Citizen, age 62 and over	\$35.00

Check enclosed Charge, I wish to use
 Mastercard/Visa # _____
 Expiration Date _____
 Signature _____

Contributing Memberships

All contributing memberships are for up to two adults in one household and their children through the age of eighteen. Discounts are available for all those persons listed on the membership.

Contributor	\$100-499
Donor	\$500-999
Supporter	\$1,000-4,999
Sustainer	\$5,000-9,999
Benefactor	\$10,000 and above

TOTAL MEMBERSHIP \$ _____
 Your entire membership is tax deductible to the full extent of the law.

Membership

South Dakota Art Museum
 Box 2250, South Dakota State University
 Brookings, SD 57007

Margaret Fishback

Brookings Woman's Club,
Brookings, SD

Phil Hendrickson

Robert & Jessie Finch, Rochester, MN
Delphine Hendrickson, San Jose, CA
Carl & Brenda Kline, Brookings, SD
R. Robert Putnam, St. Peter, MN
Jean Robinson, San Francisco, CA
Karen Simonsen, Chicago, IL

Larry McKay

Larry & Gail Tidemann, Brookings, SD

General Donors

Abbott Laboratories Fund, Abbott Park, IL
Amoco Foundation, Stuart, FL
Harold & Barbara Bailey, Brookings, SD
BankFirst, Sioux Falls, SD
Lawrence & Phyllis Bartling, Brookings, SD
Robert Bartling, Brookings, SD
Duane & Norma Benton, Powell, OH
Nelda Briggs, Brookings, SD
Dorothy Brisco, Minneapolis, MN
Arnold & Doris Brown, Brookings, SD
Buffalo News, Omaha, NE
Robert & Donna Burns, Brookings, SD
Herb & Sydna Cheever, Minneapolis, MN
Community Bank, Avon, SD
Rich & Sharon Cutler, Sioux Falls, SD
Clarence & Margaret Denton, Brookings, SD
Thomas & Bev Dobbs, Brookings, SD
Jennifer Durst, New Ulm, MN
Elmen Family Foundation, Sioux Falls, SD
Royce & Ruth Emerick, Brookings, SD
Jerry & Mary Fiedler, Brookings, SD
William & Harriet Gould Foundation, Oak Brook, IL
Nels & DeAnna Granholm, Brookings, SD
Merle Gunsalus, Brookings, SD
Patricia Guss, Brookings, SD
Virginia Harrington, Crooks, SD
Mildred Hedrick, Kalamazoo, MI
William & Sheila Hoffman, Wessington Springs, SD

Ernest & M.K. Huggins, Brookings, SD
James & Ardis Johnson, Brookings, SD
Jerry Johnson, Brookings, SD
Janean Jones, Brookings, SD
Mildred Juel, Brookings, SD
Don & Ruth Kenefick, Brookings, SD
Barb Koenders, Brookings, SD
Bill & Rita Larson, Fowler, CO
Laura Ingalls Wilder Memorial Society, DeSmet, SD
George & Bobbie Lohr, Littleton, CO
David & Linda Marquardt, Brookings, SD
Norman Martin, Brookings, SD
J. Walt McCarty, Brookings, SD
Murph & Patti Monahan, Brookings, SD
E. A. & Virginia Mosley, Tenafly, NJ
Paula Nelson, Platteville, WI
Larry Ness, Yankton, SD
Tim & Laurie Nichols, Brookings, SD
Notlimah Associates, Omaha, NE
Ella Ollenburg, Brookings, SD
Elaine Olson, Brookings, SD
Kenneth & Dolores Ostroot, Brookings, SD
Diane Pettinger, Watonsville, CA
Questers, Yankton, SD
Donna Ritter, Brookings, SD
C. Scotty & Margaret Roberts, Scottsdale, AZ
Galen Rosenow, San Antonio, TX
Paul & Sara Running Danger, Brookings, SD
Nancy Russell, Pacifica, CA
John & Joan Rychtarik, Brookings, SD
Talwin & Doris Ruttum, Sun City, AZ
Cynthia Scheid, Sioux Falls, SD
Trudy Schmieding, Brookings, SD
Doris Schumacher, Brookings, SD
Sioux Falls Area Community Foundation,
Sioux Falls, SD
Jack & Linda Stengel, Milbank, SD
Adele Sudlow, Brookings, SD
Robert & Shirley Thorson, Brookings, SD
Curtis Tweet, Lincoln, NE
Lynn Verschoor, Brookings, SD
Shirley Wiese, Brookings, SD
Louis & Elizabeth Williams, Brookings, SD
Edward & Cathy Williamson, Brookings, SD

BOARD OF TRUSTEES

Ruth Brennan, Rapid City, President
Sharon Casey, Chamberlain, Vice President
Diane Anderson, Brookings
Phyllis Bell, DeSmet
Marilyn DeLong, St. Paul, MN
Tim Dougherty, Sioux Falls
Christine Hamilton, Kimball
Rolland Johnson, Monument, CO
Jerry Jorgensen, Brookings
Maree Larson, Brookings
Rita Larson, Fowler, CO
Pat Meyer, Brookings
Peggy Gordon Miller, Brookings
Larry Ness, Yankton
Jack Stengel, Brookings
Ann McKay Thompson, Pierre
Susan Wischmeier, Aberdeen

GUILD DIRECTORS

Liz Williams, President
Donna Ritter, Vice President
Pat Reger, Secretary
Dolly Engstrom, Treasurer
Naomi Gilkerson, Historian
Pam Warren, Member at Large
Dee Kirkbride, Member at Large

STAFF

Lynn Verschoor, Director
Nancy Rexwinkel, Education Curator
Lisa Scholten, Collections Curator
John Rychtarik, Exhibitions Curator
Teresa Delfinis, Museum Store
Manager/Adminstrative Assistant

This newsletter is sponsored by: Brookings Friends of the Arts and the South Dakota Arts Council with funds from the State of South Dakota, through the Department of Education and Cultural Affairs, and the National Endowment for the Arts.

Directions: 1 & 1/2 miles West from Interstate 29 on Hwy 14, turn right on Medary Avenue, 4 blocks to Harvey Dunn Street. Museum is on right.

8M copies of this document were printed by the South Dakota Art Museum at a cost of 60 cents each MA001 9/02



South Dakota State University

SOUTH DAKOTA *Art* MUSEUM

Medary Avenue at Harvey Dunn Street
Box 2250, SDSU
Brookings, South Dakota 57007-0899
(605) 688-5423

E-mail: sdsu_sdam@sdstate.edu

Web: sdartmuseum.sdstate.edu

CHANGE SERVICE REQUESTED

NON-PROFIT
US POSTAGE PAID
BROOKINGS SD
PERMIT 24



Accredited by the American Association of Museums

**GAMRADT, CRYSTAL JO
BRIGGS LIBRARY
2115
BL**

Free public hours are:

Monday– Friday 10:00 a.m. – 5:00 p.m.

Saturday 10:00 a.m. – 4:00 p.m.

Sunday and holidays 12:00 p.m. – 4:00 p.m.

(Closed on state holidays – please call ahead)