

South Dakota State University

Open PRAIRIE: Open Public Research Access Institutional Repository and Information Exchange

South Dakota Art Museum Newsletters and Publications

Winter 2003

South Dakota Art Museum News, Spring 2003

South Dakota Art Museum

Follow this and additional works at: https://openprairie.sdstate.edu/sdam_news

ONCE UPON A TIME



Ruth Brennan,
Board of
Trustees
President

Once upon a time ... a group of women threw a handful of seeds onto the South Dakota prairie. The seeds sprouted and, with help from other South Dakotans, they grew and bloomed. These new flowers grew in Brookings on what is now the South Dakota State University campus. They were named the South Dakota Memorial Art Center.

Over the years, the people of South Dakota came to see these flowers, gave them water and nutrients, even changed the name to the South Dakota Art Museum. Years passed, the flowers burst their container and, again, with nurturing and support by new generations of South Dakotans, the flowers were replanted in a much larger container ... nearly twice the original's size.

Enough of stories. As you readers know, the South Dakota Art Museum is a state treasure,

acknowledged nationally as such by accreditation from the American Association of Museums. Now greatly expanded, the Museum is indeed one of which we can be proud. I hope that all of you have had an opportunity to visit the Museum since it reopened two years ago. If not, I hope you have a visit on your "to do" list. Believe me, you will be amazed and thrilled. The expanded space has increased the number of galleries for changing exhibitions and permanent collection display, increased programming, tours and education capabilities, provided an irresistible gift shop space and improved and expanded collection storage.

Now on behalf of the Museum's future, we're asking each of you to become a South Dakota Art Museum partner by sharing in the support of this beautiful flower ... the South Dakota Art Museum.

This spring the board of directors and staff are initiating a

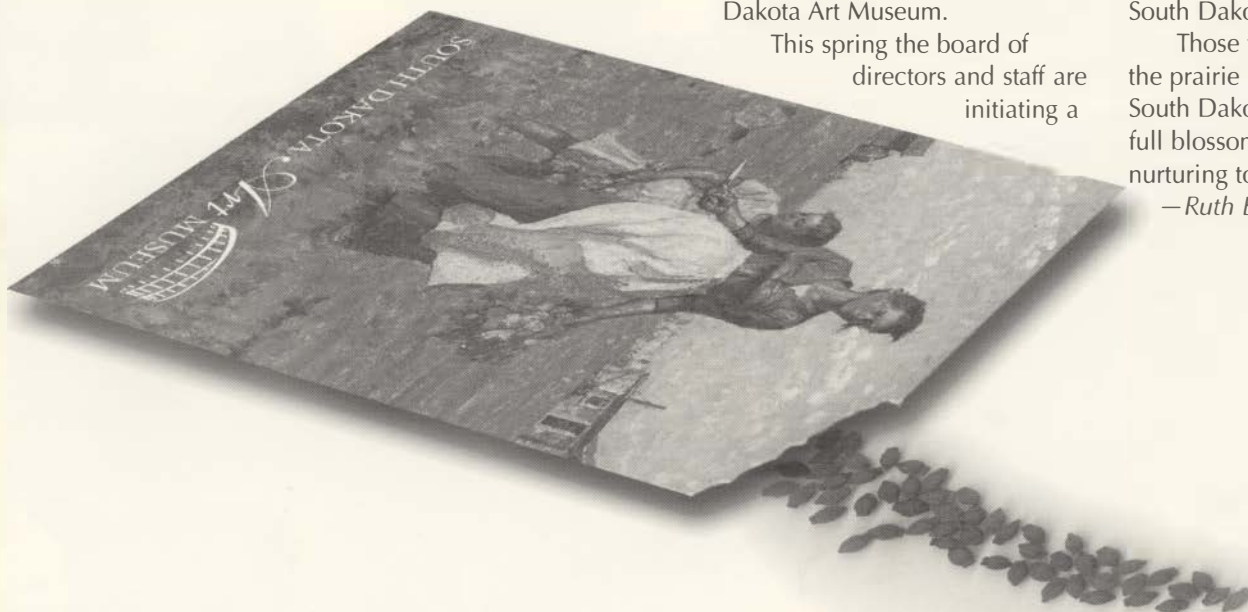
vigorous membership drive. Each recipient of this publication is being asked to become a Museum member. If you are a current member, we are asking you to give serious consideration to increasing your membership level.

As we all know, growth costs. Cost is more than just bricks and mortar of the building, it includes the added exhibitions, programs and education, plus the increased maintenance of a larger facility. Because of these increases, the Museum will not be able to continue mailings of publications and event invitations to non-members.

Soon you will be receiving specific information in the mail regarding membership support levels. On behalf of the board of directors and staff, I am asking you to continue your membership at an increased level or to become a new member of the South Dakota Art Museum.

Those tiny seeds thrown onto the prairie in 1947 by a group of South Dakota women are now in full blossom and awaiting your nurturing to reach their full glory.

—Ruth Brennan



Join *The South Dakota Art Museum*

The last two years since the Grand Re-Opening of the South Dakota Art Museum have been exciting ones. Nigerian textiles, Old Masters' works on paper, colorful and imaginative working kites, artifacts from the Sepik River area of Papua New Guinea, contemporary fiber works created by men, and Australian Tingarri Aboriginal paintings have graced the galleries of the refurbished Museum. These exhibitions and related workshops and events have afforded visitors the opportunity to explore topics and cultures beyond the boundaries of daily life in South Dakota.

Exhibits by contemporary South Dakota artists reinforce assurance that the artistic foundation laid by legendary artists Oscar Howe and Harvey Dunn has evolved, and that creative spirit continues to flourish in South Dakota.

The Art Museum's permanent collections of Marghab Linens, Native American Tribal Art, Harvey Dunn and Oscar Howe paintings, and Paul Goble illustrations continue to be viewed from new perspectives. Historical context and educational programming enhance the visual aspect of the exhibitions.

The Harvey Dunn Gallery has featured the many artistic facets of the celebrated South Dakota native including his war works loaned to the Museum from the National Museum of American History at the Smithsonian Institution in Washington, D. C. Other exhibits focused on Dunn the teacher, Dunn the illustrator, and on his images of strong and beautiful women.

These exhibitions, related cultural events, films, lectures, and workshops for both adults and children have generated an active, dynamic atmosphere at the South Dakota Art Museum. We invite you to support the Museum's continued growth and development by purchasing an annual Museum Membership.

Basic Memberships—Individual (\$30), Family (\$40), Senior Citizen (\$25) and Senior Couple (\$35)—entitle the owner to

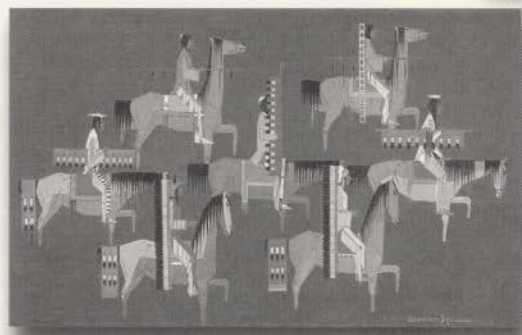
- 10% discount on Museum Store purchases
- 20% discount on Museum classes and workshops
- Subscription to the *South Dakota Art Museum News* and other Museum mailings
- Recognition in the annual membership issue of the *News*

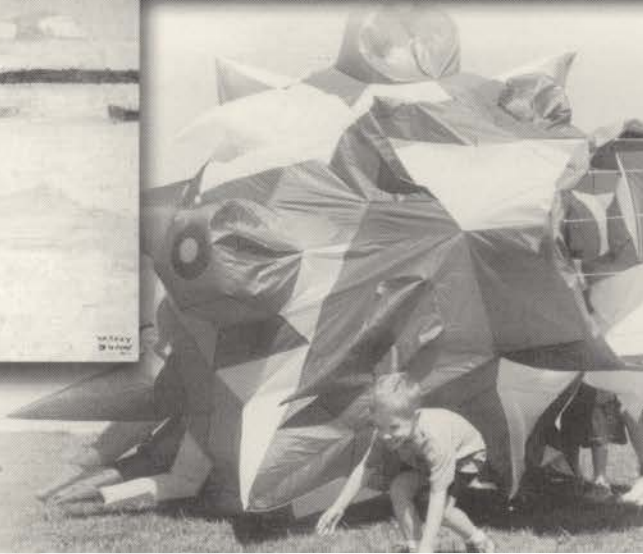
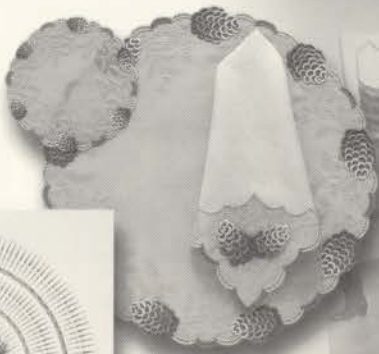
Contributing Memberships—In addition to dues, your contribution to the Museum helps to purchase works of art and aids in Museum operations and programming. These contributions also fund publications, scholarly research on collections, conservation of art works, and their restoration. Contributing members receive all of the Basic Membership benefits plus special benefits according to the level of giving. See details on the Membership Application.

Contributor	\$100-499
Donor	\$500-999
Supporter	\$1,000-2,499
Sustainer	\$2,500-4,999
Benefactor	\$5,000-9,999
Patron	\$10,000 and above



Plant the seeds of the future





From our

Members

Geoffrey Grant

In my professional role here at SDSU, I teach a class on urban sociology where we discuss the difference between town and city. It isn't just population size, which differentiates them. Cities have a varied and rich cultural life often absent from smaller settlements. While Brookings is hardly a huge city, it does have many elements of rich civic and cultural life. The Museum goes a long way toward fulfilling this need.

A few examples from the last year include: the expanded Harvey Dunn exhibit from the Smithsonian Institution, the American Indian film series shown throughout this academic year, the Papua New Guinea Sepik River wood carvings and artifacts, the indigenous Australian paintings, the Australian story teller and didjeridoo player, and the many South Dakota artists you have introduced.

Chuck Woodard

The South Dakota Art Museum is a beautiful and commodious facility, which consistently offers an impressive variety of first-rate programs and exhibits for students and community members of all ages. I am especially appreciative of the Museum's ongoing multicultural emphasis, and of the extent to which Museum offerings support and enrich our University's academic programs.

I am also very appreciative of the quality and the variety of the items in the Museum Store, where I do much of my gift shopping. Clearly, the South Dakota Art Museum is one of our region's most valuable assets.

Sharon Van Riper

I have enjoyed my association with the South Dakota Art Museum very much. From participating in the Guild, to greeting guests at the reception desk, to volunteering for special projects, it has all been very rewarding.

Watching the Museum evolve into an open and welcoming place that provides many opportunities for community, faculty, and student involvement has been exciting. I always look forward to the new exhibits. Some of my favorites were the *Contemporary Kites*, *Men of the Cloth*, and the *Australian Tingarri Aboriginal Art*.

Liz and Louis Williams

We are proud to be helping support a really great cause, the South Dakota Art Museum, which serves the whole state. Not only are there wonderful exhibits, but also a host of programs like briefings, talks at receptions, films, and workshops. We are especially delighted with the work the Museum does in reaching out to children, helping to plant the seeds for a lifelong appreciation of art.



Liz and Louis Williams

V. J. Smith

I remember the day I accompanied Mildred White of Chicago on her first visit to the South Dakota Art Museum. She was captivated by it as she said she felt so much "at home" in that special place. The images on display were a reminder of her days in South Dakota. After her visit, she often spoke of that experience in the Museum and was moved to give a significant gift to the expansion project. The interesting part was that she wasn't asked to give a gift, it was strictly her idea. That says volumes for what emotions she experienced during that visit almost ten years ago.

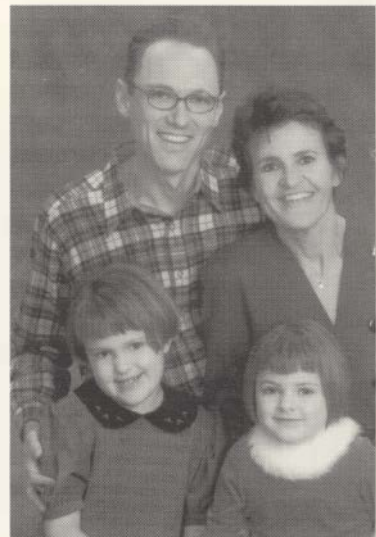


The late Mildred White and V.J. Smith

Tim & Laurie Nichols Family

Our whole family enjoys the Art Museum! We love the exhibits, the gift shop is great, and our young daughters enjoy the workshops—the alligator masks and didjeridoo workshops were big hits.

The Museum's leadership—especially director Lynn Verschoor—has transformed the South Dakota Art Museum into a place that is stimulating, educational, and fun. The Museum's community programs help SDSU in its efforts to be a truly engaged institution.



Tim and Laurie Nichols with daughters, Jordan and Hannah

HARVEY DUNN

January 30-June 8, 2003

Feminine Images

The South Dakota Art Museum is now featuring *Harvey Dunn, Feminine Images* the fourth exhibition in a series focusing on the many facets of South Dakota's most famous artist. Beginning in the year 2000 with *Harvey Dunn, War Works*, the series continued with *Harvey Dunn, Teacher* and *Harvey Dunn, Illustrator*.

The current exhibition explores Dunn's approach to painting women and reveals observations he made to his students regarding the feminine gender.

"Harvey Dunn's fondness and respect for women are obvious in his paintings," notes John Rychtarik, curator of exhibitions. "He projects the strength of the woman's character, and yet maintains the grace and elegance of her femininity."

The South Dakota Art Museum Volunteer Guild will host a gallery reception for *Harvey Dunn, Feminine Images* from 4:30-7:00 p.m. on Friday, March 14. At 5:30 p.m., Darla Bielfeldt, will present a reading of her poetry inspired by Dunn's female images. This reading is a Dakota Reader presentation sponsored in part by the National Endowment for the Arts.



Paintings by Harvey Dunn: Top, *A Figure Study*, oil on canvas. Above, left to right, *Portrait of Helen Gilmore*, oil on canvas board; *May Street*, oil on canvas; *Just a Few Drops of Rain*, oil on canvas.

Help Save This South Dakota TREASURE

For some time, the South Dakota Art Museum has been raising funds to aid in the restoration of the Museum's Harvey Dunn Painting Collection. Efforts have been made to educate Museum visitors about the need for restoration, the process, and the costs involved.

The goal of the Museum's preservation efforts is to prolong the existence of cultural properties belonging to the State of South Dakota and held in the South Dakota Art Museum's permanent collection.

The preservation plan began with a careful assessment of the collections. The South Dakota Art Museum was granted a Conservation Assessment Program (CAP) survey done in 2001 and a Museum Assessment Program (MAP) survey done in 2002 to review the Museum's collections, facility, policies and procedures.

The next step was to prioritize areas of need. Based on these assessments, the curatorial staff identified the Harvey Dunn Collection as a preservation priority. Dunn's status as a major South Dakota artist and the deteriorating physical condition of a number of paintings in the collection influenced this decision.

Battleground painted by Harvey Dunn in 1929, has been designated as a "high priority" candidate for treatment.

Dunn's use of thick heavy paint and over 7 decades of time have resulted in excessive cracking and separation of the paint from the canvas backing. The painting weighs over 150 pounds, including the frame. The weight of the painting and the looseness of the canvas create additional stress. If left untreated, the paint will

separate completely from the canvas and large sections of the painting will be lost. At this point, restoration would be difficult, if not impossible.

Conservation experts have outlined the treatment plan. The South Dakota Art Museum has been a long-time member of the Upper Midwest Conservation Association (UMCA). Organized in 1977, UMCA is a full service fine arts conservation laboratory. It is located at the Minneapolis Institute of Arts and serves both institutions and private collections.

UMCA experts have proposed treatment that includes:

- Relining the painting to provide additional support to the original canvas.
- Restoring the bond between original paint and canvas, and in-painting areas of paint loss.
- Reinforcing the support frame, properly attaching painting to frame, and adding a protective dust cover.

Preservation support comes from private donors as well as from public and private grant awards. The proposed plan of treatment for Harvey Dunn's *Battleground* is estimated at \$8,000-10,000. Your financial support of the conservation efforts at the South Dakota Art Museum will ensure long-term access to the artwork and cultural

treasures of the State of South Dakota.



Battleground, 1929, oil on canvas, gift of the artist.

Dunn began work on this painting in 1919, soon after serving as one of eight artists attached to the American Expeditionary Force in Europe during the First World War. The painting appeared on the cover of the November 1928 *American Legion Monthly* with the title of "Armistice."

calendar of events



March



Aunt Emma, oil, Harvey Dunn

11 — Docent Gallery Briefing

Tom Dempster: Faces of Culture & Paul Goble: A Closer Look
Coffee 9:30 a.m.
Briefing 10:00 a.m.

12 — Out of the Spotlight: Women in the Arts

Panel & Discussion, Sponsored by SDSU's Quest for Equity Fund, the Women's Studies Program, and the South Dakota Art Museum
3:00-5:00 p.m., Auditorium
Free Admission

13 — Film Series

The Fast Runner
7:30 p.m., Auditorium
\$4 Admission, \$3 with student ID

14 — Gallery Reception

Harvey Dunn, Feminine Images
Hosted by the South Dakota Art Museum Volunteer Guild
4:30-7:00 p.m.

Dakota Reader Poetry

5:30 p.m., Dunn Gallery
Darla Bielfeldt reads her original poetry inspired by Dunn's paintings of women.

15 — Adult Landscape Painting Workshop

Gary Steinley, instructor
Multipurpose Room
Age 13 and up, 8:30 a.m.-4:30 p.m.
Bring Sack Lunch
\$140 members, \$175 nonmembers
Pre-register by February 24
2 sessions (March 15 & 22)

18 — "Miz Wizard's Science Secrets"

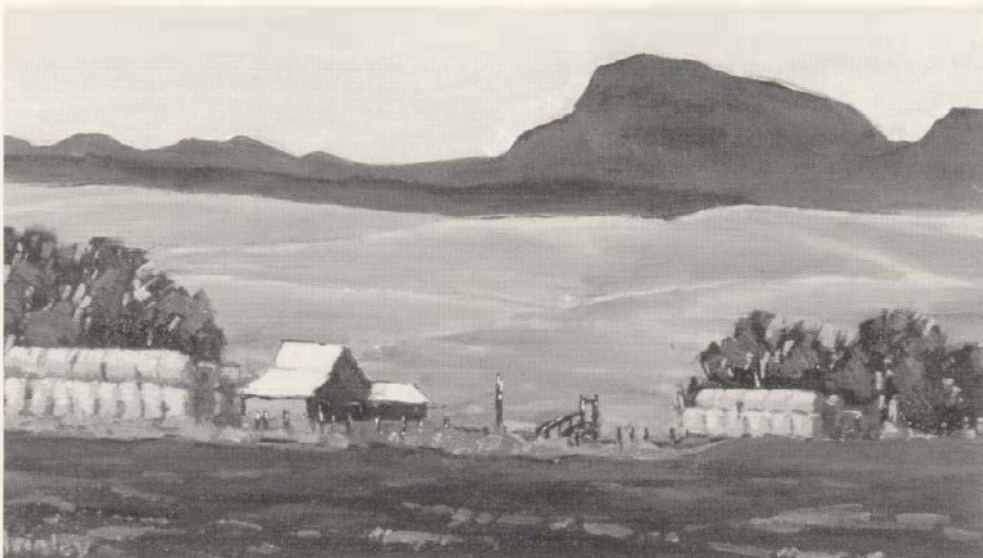
Performance by Jane Curry
Sponsored by SDSU's Quest for Equity Fund, the Women's Studies Program, and the South Dakota Art Museum
7:00 p.m., Auditorium
Free Admission

22 — Adult Landscape Painting Workshop continues

Bring Sack Lunch
8:30 a.m.-4:30 p.m.
(Second Session)

25 — South Dakota Art Museum Volunteer Guild Meeting & Ten O'Clock Scholar,

9:30 a.m. coffee
10:00 a.m. meeting & program, "Touring France," by Pat Reger & Mary Haug
Auditorium



Lawrence County Farm, oil, Gary Steinley
Landscape painting workshop, March 15 and 22nd

calendar of events



Guess Who's Coming to Dinner, constructed screenprint monotype, Robert Schwieger



Surprise Lilly, water color, Marian Henjum; Watercolor Painting Workshop March 28-30th

27 — Artists' Reception
Robert Schwieger &
Tom Dempster: *Faces of Culture*
4:30-7:00 p.m.
Gallery Talks 5:30 p.m.

28 — Adult Watercolor Painting Workshop
Marian Henjum, instructor
Multipurpose Room
Ages 13 and up, 6:00-8:00 p.m.
\$128 members, \$160 nonmembers
Pre-register by March 7
3 Sessions (March 28,
29 & 30)

29 — Adult Watercolor Painting Workshop
continues
Bring Sack Lunch
9:00 a.m.-5:00 p.m.
(Second Session)

30 — Adult Watercolor Painting Workshop
continues
12:00 noon-4:00 p.m.
(Third Session)

April

1 — Docent Gallery Briefing
Robert Schwieger
Coffee 9:30 a.m., Briefing 10:00 a.m.

4 — South Dakota State University & Flandreau Indian School Success Academy
Tour & Special Presentation

5 — Adult Relief Block Print Workshop
Brett Anderson, instructor
Multipurpose Room
Ages 13 and up, 10:00 a.m.-4:00 p.m.
Bring Sack Lunch
\$120 members, \$150 nonmembers
Pre-register by March 15
2 Sessions (April 5 & 12)

9 — Kid's Soap, Fancy & Fun Workshop
Norma Nusz Chandler, instructor
Multipurpose Room
Ages 8-12, 2:30-4:30 p.m.
\$12 members, \$15 nonmembers
Pre-register by March 26

10 — Film Series
Skins
7:30 p.m., Auditorium
\$4 Admission, \$3 with student ID

11 — Poetry Reading
South Dakota's Poet Laureate
David Allan Evans
3:00-5:00 p.m., Auditorium

12 — Adult Relief Block Print Workshop
continues
Bring Sack Lunch
10:00 a.m.-4:00 p.m.
(Second Session)

14 & 15 — Upper Midwest Conservation Association Workshop
Works of Art on Paper
Multipurpose Room

15 — Growth Thru Art
5:30-6:30 p.m., Multipurpose Room

22 — South Dakota Art Museum Volunteer Guild Annual Meeting & Brunch
9:30 a.m., Multipurpose Room
The Missouri by Greg Latza

22 — Growth Thru Art
5:30-6:30 p.m., Multipurpose Room

24 — Dakota Reader Live Performance
7:00 p.m., Auditorium
\$4.00 Admission, \$3.00 with student ID

calendar of events

24, 25 & 26 — "Bead Extravaganza!"

Instructors Leslie and Anna from The Bead Monkey stores in Minneapolis & St. Paul present a 3-day Bead Trunk Sale and a variety of Beading Workshops.

Free Demonstrations of Beaded Wine Glass Charms

Bead Sale and Demonstrations:

Thursday, April 24, 2-7 p.m.

Friday, April 25, 9 a.m.-6 p.m.

Saturday, April 26, 9 a.m.-4 p.m.

Workshops and bead sale held in the lower level Multipurpose Room of the South Dakota Art Museum.

Pre-registration deadline for all workshops is April 18.

25 — Adult Elements of Beading

Ages 13 and up, 9:00-11:00 a.m.
\$24 members, \$30 nonmembers

Adult Beginning Peyote Bracelet

Ages 13 and up, 12:00-3:00 p.m.
\$32 members, \$40 nonmembers

Adult Wire Links Bracelet & Earrings

Ages 13 and up, 3:30-6:30 p.m.
\$32 members, \$40 nonmembers

26 — Kid's Name Game Bracelet

Ages 8-12, 9:00-11:00 a.m.
\$12 members, \$15 nonmembers

Adult Beaded Brooch

Ages 13 and up, 12:00-2:00 p.m.
\$24 members, \$30 nonmembers

Adult Wrist Wreath Bracelet

Ages 13 and up, 3:00-5:30 p.m.
\$28 members, \$35 nonmembers

29 — Growth Thru Art

5:30-6:30 p.m., Multipurpose Room

30 — Kid's Poetry Workshop

Darla Bielfeldt, instructor
Multipurpose Room
Ages 8-12, 2:30-4:30 p.m.
\$12 members, \$15 nonmembers
Pre-register by April 23

May

6 — Growth Thru Art

5:30-6:30 p.m., Multipurpose Room

10 — Adult Soapmaking Workshop

Norma Nusz Chandler, instructor
Multipurpose Room
Bring Sack Lunch
10:00 a.m.-4:00 p.m.,
\$32 members, \$40 nonmembers
Pre-register by April 26

13 — Growth Thru Art

5:30-6:30 p.m., Multipurpose Room

17 — Kid's Mosaic Coaster Workshop

Kim Hayes, instructor
Multipurpose Room
Ages 8-12, 9:00 a.m.-11:00 a.m.
\$12 members, \$15 nonmembers
Pre-register by May 3

17 — Adult Mosaic Frame Workshop

Kim Hayes, instructor
Multipurpose Room
Age 13 and up, 12:00 noon-2:00 p.m.
\$36 members, \$45 nonmembers
Pre-register by May 3

17 — Adult Mosaic Garden Stepping Stone Workshop

Kim Hayes, instructor
Multipurpose Room
Age 13 and up, 3:00-5:00 p.m.
\$40 members, \$50 nonmembers
Pre-register by May 3

20 — Growth Thru Art

5:30-6:30 p.m., Multipurpose Room



TOC, 02.2, Tom Shields



Wrist Wreath, Bead Extravaganza
April 24, 25 & 26

exhibits calendar

December 23-June 23, 2003

Native American Beadwork

January 14-June 1, 2003

Marghab Linen:

The Women Behind Marghab

January 30-May 30, 2003

South Dakota Artist Series:

Mary Selvig & Tom Shields

January 30-June 8, 2003

Harvey Dunn, Feminine Images

March 5-June 22, 2003

Tom Dempster: Faces of Culture

March 5, 2003-March 7, 2004

Paul Goble: A Closer Look

March 25-July 27, 2003

Robert Schwieger

June 7-September 21, 2003

Marghab Linen:

The Men Behind Marghab

June 11-October 20, 2003

South Dakota Artist Series:

Jean Larsen & Lisa Shoemaker

June 17, 2003-January 1, 2004

Harvey Dunn, War Works

June 30-December 28, 2003

Native American Quillwork

July 1-November 2, 2003

Jeff Freeman

August 5, 2003-January 4, 2004

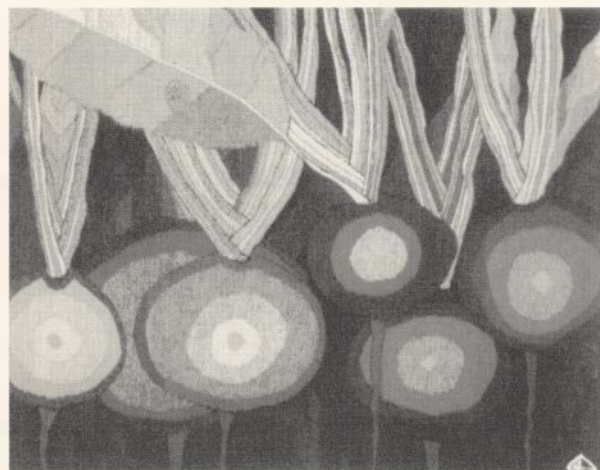
Folk Arts Exhibit

August 5, 2003-January 4, 2004

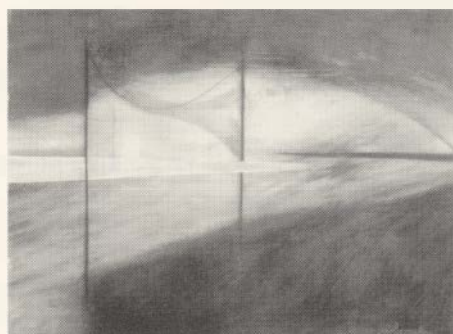
Eva Isaksen & Grete Bodogaard

September 30, 2003-February 1, 2004

Marghab Linens: Floral Designs



Beets, weaving,
Grete Bodogaard



Utility Lines, water based oils,
Lisa Shoemaker



Storm over Dalesburg, acrylic on wood, Jean Larsen

South Dakota State University

SOUTH DAKOTA *Art* MUSEUM

Medary Avenue at Harvey Dunn Street
Box 2250, SDSU
Brookings, South Dakota 57007-0899
(605) 688-5423
E-mail: sdsu_sdam@sdstate.edu
Web: sdartmuseum.sdstate.edu
Accredited by the American Association of Museums

Free public hours are:
Monday – Friday 10:00 a.m.–5:00 p.m.
Saturday 10:00 a.m.–4:00 p.m.
Sunday and holidays 12:00 p.m.–4:00 p.m.
(Closed on state holidays – please call ahead)

Spring Workshops

Workshops are held in the South Dakota Art Museum Multipurpose Room. Because equipment and supplies are ordered for each workshop participant, pre-registration and pre-payment are required. Class sizes are limited, so register early. Call the Museum Office at 688-5423

For workshops scheduled through the noon hour, participants are asked to bring a sack lunch.

ADULT WORKSHOPS ages 13 and up

2-Day Landscape Painting March 15 & 22

Artist Gary Steinley will present a 2-day workshop on landscape painting with the new water-soluble oils. This workshop is suitable for beginners, as well as more experienced painters. All equipment and materials necessary to start landscape painting are included in the workshop fee.

March 15 & 22, 8:30 a.m.-4:30 p.m.
\$140 members, \$175 nonmembers
Pre-register by February 24

Weekend Watercolor Painting March 28, 29 & 30

Marian Henjum, well-known South Dakota watercolor artist, makes her living as a painter, designer and illustrator in Sioux Falls. Henjum graduated from SDSU in 1968 and recently had an exhibit at the Visual Art Department's Ritz Gallery. She will be the instructor for a weekend watercolor painting workshop structured to accommodate both beginners and experienced watercolor artists. All equipment and materials are included in the workshop fee.

March 28, 6:00-8:00 p.m.
March 29, 9:00 a.m.-5:00 p.m.
March 30, 12:00-4:00 p.m.
\$128 members, \$160 nonmembers
Pre-register by March 7

2-Day Relief Block Printing April 5 & 12

Visiting instructor at the SDSU Visual Arts Department, Brett Anderson, will share his expertise in printmaking during a 2-day workshop at the South Dakota Art Museum. Learn the age-old techniques for creating original multiples as Anderson demonstrates and assists students with the basic procedures to create, carve and edition relief block prints in black and white and in color. Equipment and materials are included in the workshop fee.

April 5 & 12, 10:00 a.m.-4:00 p.m.
\$120 members, \$150 nonmembers
Pre-register by March 15

Soapmaking May 10

Norma Nusz Chandler, the "soaplady" has created a business by modernizing the art of old-fashioned soapmaking. Her soaps are available in the Museum Store. Norma will share tried-and-true techniques using natural ingredients and aromatic scents. Pamper yourself or give as gifts with a personal touch. Each participant will take home 20-25 bars of scented soap. Supplies are included in the workshop fee. Ask about equipment.

May 10, 10:00 a.m.-4:00 p.m.
\$32 members, \$40 nonmembers
Pre-register by April 26

Mosaic Picture Frame May 17

Kim Hayes, proprietor of *Prairie Fired Pottery* in Sioux Falls will bring her basic mosaic class to the South Dakota Art Museum. This workshop is a good foundation for tackling any mosaic project that you can think of. Learn the basics while making a fun and creative picture frame for yourself or as a gift! Supplies included.

May 17, 12:00-2:00 p.m.
\$36 members, \$45 nonmembers
Pre-register by May 3

Mosaic Garden Stepping Stone May 17

Each participant in Kim Hayes' workshop will create a mosaic stepping stone and also take home a reusable mold for making more! Kim will bring a variety of mosaic supplies including stained glass, and river rock. Supplies and mold included.

May 17, 3:00-5:00 p.m.
\$40 members, \$50 nonmembers
Pre-register by May 3

CHILDREN'S WORKSHOPS Ages 8-12

Soap, Fancy & Fun April 9

Learn about soap from "soaplady," Norma Nusz Chandler and make your own glycerin soaps that look and smell great.

April 9, 2:30-4:30 p.m.
\$12 members, \$15 nonmembers
Pre-register by March 26

Poetry Workshop April 30

Poet Darla Bielfeldt will take you through the South Dakota Art Museum galleries for inspiration. Learn about writing poetry and then read your own poems for your parents at the end of the workshop.

April 30, 2:30-4:30 p.m.
\$12 members, \$15 nonmembers
Pre-register by April 23

Kid's Mosaic Coaster May 17

Kim Hayes from *Prairie Fired Pottery* in Sioux Falls will help the kids create a fun and colorful mosaic coaster. They will learn the basics of mosaic as they create their own design on a 4-inch ceramic tile. Supplies included.

May 17, 9:00 a.m.-11:00 a.m.
\$12 members, \$15 nonmembers
Pre-register by May 3

Bead **EXTRAVAGANZA!**

Sale Classes Demonstrations

Instructors Leslie and Anna from The Bead Monkey stores in Minneapolis & St. Paul present a 3-day Bead Trunk Sale and 2 days of Beading Workshops.

Free Demonstrations of Beaded Wine Glass Charms

Bead Sale and demonstrations

Thursday, April 24, 2-7 p.m.

Friday, April 25, 9 a.m.-6 p.m.

Saturday, April 26, 9 a.m.-4 p.m.

Classes

Beads for the workshops will be purchased at The Bead Monkey Trunk Sale where supply lists will be available. Workshops are held in the lower level Multipurpose Room of the South Dakota Art Museum.

Pre-registration deadline for all beading workshops is April 18.

Tools are provided for the classes, beads and supplies are extra.

April 25

Adult Elements of Beading

Your first class, but not your last! Make a bracelet and necklace while learning about beads, tools, findings, and jewelry making.

Ages 13 and up

April 25, 9:00-11:00 a.m.

\$24 members, \$30 nonmembers

Adult Beginning Peyote Bracelet

Learn the basic peyote beading stitch plus finishing and stringing techniques.

Ages 13 and up

April 25, 12:00-3:00 p.m.

\$32 members, \$40 nonmembers

Adult Wire Links Bracelet & Earrings

Link beads together using wire and learn looping and wrapping techniques as well.

Ages 13 and up

April 25, 3:30-6:30 p.m.

\$32 members, \$40 nonmembers

April 26

Kid's Name Game Bracelet

(Supplies included)

The hottest thing going for cool kids! Learn fun beading techniques while creating a bracelet with your own name or the name of a friend.

Ages 8-12

April 26, 9:00-11:00 a.m.

\$12 members, \$15 nonmembers

Adult Beaded Brooch

Use a needle and thread technique to create a stunning beaded brooch for yourself or as a special handmade gift.

Ages 13 and up

April 26, 12:00-2:00 p.m.

\$24 members, \$30 nonmembers

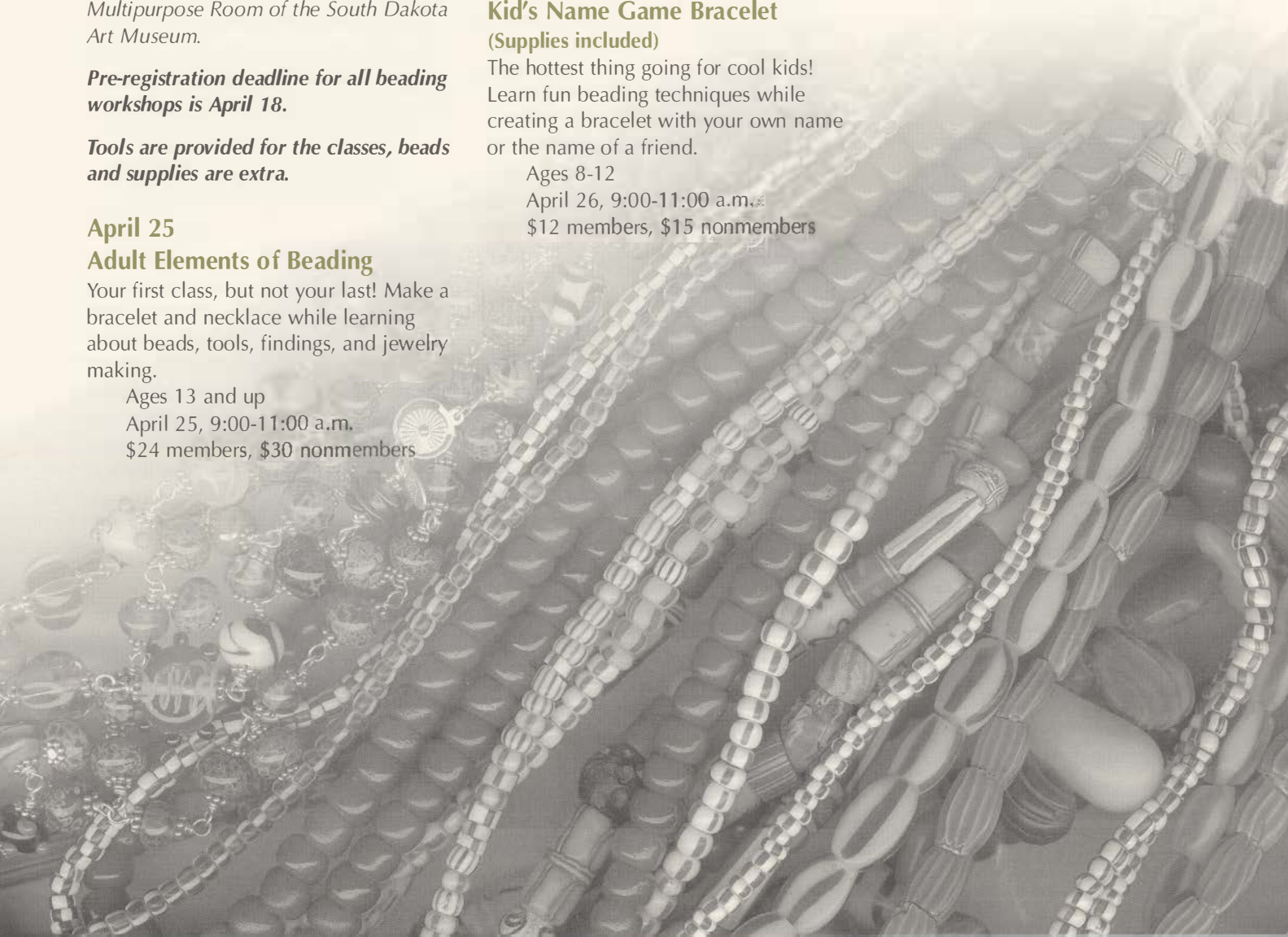
Adult Wrist Wreath Bracelet

Weave seed beads and a variety of glass beads to create a colorful, loopy wreath for your wrist.

Ages 13 and up

April 26, 3:00-5:30 p.m.

\$28 members, \$35 nonmembers



New Storage System Installed

A new sliding rack hanging storage system has been installed at the South Dakota Art Museum and is now the home of many of Harvey Dunn's original paintings, as well as other works of art.

The system was purchased through a grant from the federal Institute of Museum and Library Services (IMLS) and a matching gift from Barbara and Van Fishback of Brookings, South Dakota.

"The new hanging storage system has greatly improved our ability to provide safe and accessible storage for the paintings and framed works in our collection," said Lisa Scholten, curator of collections. "We are very grateful to IMLS and to Barb and Van Fishback for providing the funding to meet this critical need."

IMLS is a federal grantmaking agency located in Washington, D.C. that fosters leadership, innovation, and a lifetime of learning by supporting museums and libraries.



Student assistant Ben Mohning and collection curator, Lisa Scholten, place painting onto the new hanging storage system.

A New Face

The South Dakota Art Museum welcomes Patty Bacon of Volga as the new Museum Store Manager and Program Assistant. She fills the position vacated by Teresa Delfinis who was recently hired as an Academic Development Assistant by the College of Pharmacy at South Dakota State University.

Patty was born in Redfield, South Dakota. She graduated from South Dakota State University, earning both her Bachelor of Science and her Master of Arts degrees in Communications Studies and Theatre. "I am thrilled to be back on campus working with the art community," she notes. "The South Dakota Art Museum has a rich history and I feel privileged to be part of it."

Over the past 20 years, Patty has been employed by a variety of non-profit organizations, including Consumer Credit Counseling Services and the Friends of South Dakota Public Broadcasting. From 1999-2002, she served as Executive Director to the Brookings Area Habitat for Humanity.

Patty has two grown children and enjoys living on a country acreage with her husband, Rich Larson.



Patty Bacon

The Brookings Arts Council

The Brookings Arts Council sponsors classes, exhibits and events at the Community Cultural Center located at 524 4th Street in Brookings. Please call 692-4177 for information.

Brookings Arts Council Youth Classes:

Meet the Masters

Ages 3-5 years: Each week students will create an original artwork in a different artistic style. This is a fun way to explore different art materials and learn about art.

Saturdays (6 weeks); 10-10:45 a.m.

March 8-April 12, 2003

Fee: \$25.00 Instructor: Brandi Lampster

Textile Art

Ages 7-10 years: Students will explore the exciting world of art on fabric. Among techniques used will be batik, tie-dye and silk screen.

Saturdays (6 weeks); 11-Noon.

March 8-April 12, 2003

Fee: \$30.00 Instructor: Brandi Lampster

Brookings Arts Council Exhibition Schedule 2003:

Evening for the Arts Preview Exhibition

March 14-April 4

Reception March 21, 5:00-7:00 p.m.

High School Youth Exhibition

April 8 - April 25

Elementary Youth Exhibition grades 3, 4, 5

April 29 - May 16

John Berry

May 26 - June 20

Juried Art Exhibition

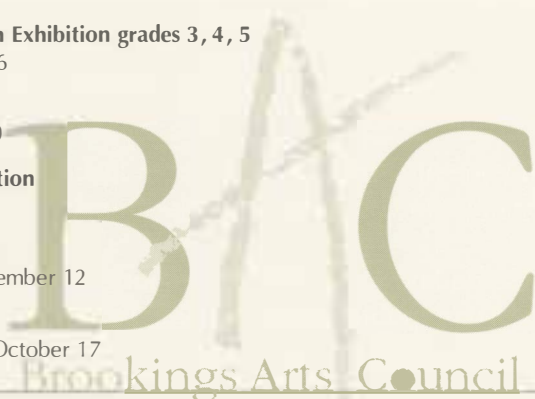
July 7 - August 8

Mark Stenwedel

August 18 - September 12

Allan Fisher

September 22 - October 17



Film

MARCH 13

***The Fast Runner*
(ATANARJUAT)**

A film by Zacharias Kunuk

An exciting action thriller set in ancient Igloolik, the film unfolds as a life-threatening struggle between powerful natural and supernatural characters. The film, *The Fast Runner* (Atanarjuat) is part of a continuous stream of oral history carried forward into the new millennium through a marriage of Inuit storytelling skills and new technology. *Atanarjuat* is Canada's first feature length film written, produced, directed, and acted by Inuit.

Igloolik is a community of 1200 people located on a small island in the north Baffin region of the Canadian Arctic with archeological evidence of 4000 years of continuous habitation. Throughout these millennia, with no written language, untold numbers of nomadic Inuit renewed their culture and traditional knowledge for every generation entirely through storytelling.

For countless generations, Igloolik elders have kept the legend of Atanarjuat to teach young Inuit the danger of setting personal desire above the needs of the group.

7:30 p.m., South Dakota Art Museum Auditorium
Admission \$4.00
\$3.00 with SDSU student I.D.

APRIL 10

Skins

Written by Jennifer Lyne
(Based on the novel by Adrian C. Louis)
Directed by Chris Eyre

In the shadow of Mt. Rushmore, one of America's favorite tourist attractions, lies the Pine Ridge Indian Reservation, one of the poorest counties in the country. For police officer Rudy Yellow Lodge, the painful legacy of Indian existence is brought home every night as he locks up drunks and disorderly Indians, which frequently includes his own alcoholic brother, Mogie.

Ironically, their relationship achieves redemption after Rudy's tragic error in judgment, and the brothers begin the process of mending their fractured relationship. Ultimately, Rudy is able to honor his big brother, as well as his people, with one exhilarating and life-affirming act of defiance, revealing the redemptive power of the love between the two brothers.

Continue to Receive the Newsletter

If you enjoy receiving the South Dakota Art Museum Newsletter and publications, please let us know by mailing in your application for membership or membership renewal.

As you know, printing and mailing costs are rising, and we regret that we will no longer be able to make Museum publications available to nonmembers. Beginning in the fall of 2003, the newsletter, reception invitations and other Museum information will only be mailed to South Dakota Art Museum members.

South Dakota Art Museum Membership Application/Renewal

Our members are vital to the continued development of the South Dakota Art Museum, and, in turn, the Art Museum makes our members' lives richer through the arts.

Basic Membership Benefits (Renewed Annually)

- 10% discount on Museum Store purchases.
- 20% discount on Museum classes and workshops.
- Subscription to the *South Dakota Art Museum News* and other Museum mailings.
- Recognition in the annual membership issue of the *News*.

Contributing Membership Benefits

In addition to your dues, your contribution to the Museum will help to purchase works of art and aid in Museum operations and programming. These contributions also fund publications, scholarly research on collections, conservation of art works, and their restoration. Contributing members receive all of the basic membership benefits plus the special benefits listed below.

Contributor (\$100 and above)

- Family membership for two adults and their children through age eighteen.
- Basic membership benefits.

Donor (\$500 and above)

- All benefits above, plus one free gift membership to a friend.
- Recognition for your level of giving on donor panels.

Supporter (\$1000 and above)

- All benefits above, plus one additional free gift membership to a friend.

Sustainer (\$2,500 and above)

- All benefits above, plus receive recognition as a sponsor or co-sponsor of a SDAM exhibition or program selected in collaboration with the director.

Benefactor (\$5,000 and above)

- All benefits above, plus receive recognition as a sponsor or co-sponsor of two SDAM exhibitions or programs selected in collaboration with the director.

Patron (\$10,000 and above)

- All benefits above.

To join, simply fill out the attached form and mail it to the South Dakota Art Museum with your check or credit card information. Call the Museum Office at 688-5423 if you have questions regarding membership or wish to pursue other ways of giving.

Automatic bank withdrawal is available.

Volunteer opportunities are available.
Call 605-688-5423 for more information.



Full Name(s) _____
Address _____
City _____ State _____ Zip _____
Telephone (____) _____
E-mail _____

Basic Memberships

SDSU Student	FREE
Individual	\$30.00
Family	\$40.00

(Up to two adults in one household and their children through age eighteen.)

Individual Senior Citizen, age 62 and over	\$25.00
Couple Senior Citizen, age 62 and over	\$35.00

Contributing Memberships

All contributing memberships are for up to two adults in one household and their children through the age of eighteen. Discounts are available for all those persons listed on the membership.

Contributor	\$100-499
Donor	\$500-999
Supporter	\$1,000-2,499
Sustainer	\$2,500-4,999
Benefactor	\$5,000-9,999
Patron	\$10,000 and above

Please list children through age 18 to be included in a family or contributing membership:

Name _____
Birth Year _____
Name _____
Birth Year _____
Name _____
Birth Year _____

☐ Automatic bank withdrawal. We will send appropriate forms.

☐ Check enclosed ☐ Charge, I wish to use

Mastercard/Visa # _____

Expiration Date _____

Signature _____

TOTAL MEMBERSHIP \$ _____

Your entire membership is tax deductible to the full extent of the law.

Membership

South Dakota Art Museum
Box 2250, South Dakota State University
Brookings, SD 57007

3M Award

In recognition of Verna Sturdevant's commitment to the South Dakota Art Museum and to the community of Brookings, and for her outstanding service, the 3M Foundation has donated \$200 to the South Dakota Art Museum on her behalf as part of the 3M GIVES (Grants Initiated by Volunteer Service) program.

Verna donates her time monthly at the South Dakota Art Museum's reception desk greeting visitors and making them feel welcome. She also generously volunteers her time to the Brookings Hospital Auxiliary and the United Retirement Center.

"Volunteerism is 3M's greatest contribution to our communities," said Fred Harris, vice-president, 3M Foundation. "Our employees and retirees donate thousands of hours to making their communities better places to live. 3M GIVES enables them to make a greater impact on their communities."

As part of the 3M GIVES program, the 3M Foundation will donate \$200 to eligible non-profit organizations for which a 3M employee or retiree volunteers 25 hours or more per calendar year. For more information on this program, please contact 3M Community Affairs at (651) 733-1421.

Many corporations offer similar volunteer or matching gift programs to enhance their employees' or retirees' gifts. Information about corporate gift programs is available from the SDSU Foundation. (605) 697-7475



Philip Morris Grant

The Philip Morris Management Corporation recently informed South Dakota Art Museum director, Lynn Verschoor, of a \$1,500 award to the Museum's general programming fund.

In making the donation, Marianne Kiely, director of public affairs stated that Philip Morris has "...always taken pride in being active corporate citizens. Our charitable contributions, our involvement with the arts, and our participation in the political process represent our efforts to make South Dakota a better place in which to live."

South Dakota State University

SOUTH DAKOTA *Art* MUSEUM

Medary Avenue at Harvey Dunn Street
Box 2250, SDSU
Brookings, South Dakota 57007-0899
(605) 688-5423

E-mail: sdsu_sdsm@sdstate.edu

Web: sdartmuseum.sdstate.edu



Accredited by the American
Association of Museums

Free public hours are:
Monday– Friday 10:00 a.m. – 5:00 p.m.
Saturday 10:00 a.m. – 4:00 p.m.
Sunday and holidays 12:00 p.m. – 4:00 p.m.
(Closed on state holidays – please call ahead)

CHANGE SERVICE REQUESTED

VAN BUREN, STEPHEN
BRIGGS LIBRARY
2115
BL

BOARD OF TRUSTEES

Ruth Brennan, Rapid City, President
Sharon Casey, Chamberlain, Vice President
Diane Anderson, Brookings
Phyllis Bell, DeSmet
Marilyn DeLong, St. Paul, MN
Tim Dougherty, Sioux Falls
Christine Hamilton, Kimball
Rolland Johnson, Monument, CO
Jerry Jorgensen, Brookings
Maree Larson, Brookings
Rita Larson, Fowler, CO
Pat Meyer, Brookings
Peggy Gordon Miller, Brookings
Larry Ness, Yankton
Jack Stengel, Milbank
Ann McKay Thompson, Pierre
Susan Wischmeier, Aberdeen

GUILD DIRECTORS

Liz Williams, President
Donna Ritter, Vice President
Pat Reger, Secretary
Dolly Engstrom, Treasurer
Naomi Gilkerson, Historian
Pam Warren, Member at Large
Dee Kirkbride, Member at Large

STAFF

Lynn Verschoor, Director
Nancy Rexwinkel, Education Curator
Lisa Scholten, Collections Curator
John Rychtarik, Exhibitions Curator
Patty Bacon, Museum Store Manager/Administrative Assistant

This newsletter is sponsored by: Brookings Friends of the Arts and the South Dakota Arts Council with funds from the State of South Dakota, through the Department of Education and Cultural Affairs, and the National Endowment for the Arts.

Directions: 1 & 1/2 miles West from Interstate 29 on Hwy 14, turn right on Medary Avenue, 4 blocks to Harvey Dunn Street. Museum is on right.

15M copies of this document were
printed by the South Dakota Art
Museum at a cost of 53 cents each.
MA001 2/03



SOUTH DAKOTA ARTS COUNCIL
support is provided with funds from the State of
South Dakota and the National Endowment for the Arts

NON-PROFIT
US POSTAGE PAID
BROOKINGS SD
PERMIT 24