

South Dakota State University

**Open PRAIRIE: Open Public Research Access Institutional
Repository and Information Exchange**

South Dakota Art Museum Newsletters and Publications

Winter 2005

South Dakota Art Museum Newsletter, Winter/Spring 2005

South Dakota Art Museum

Follow this and additional works at: https://openprairie.sdstate.edu/sdam_news

YORUBA

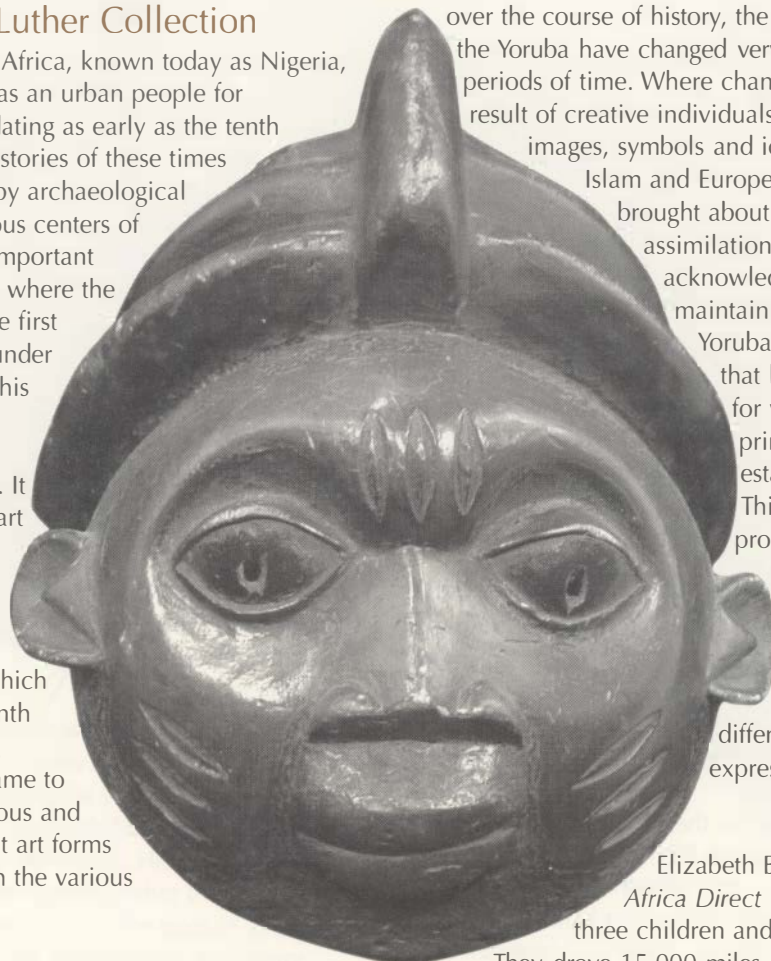
An Art of Life

The Bennett — Luther Collection

*In the region of West Africa, known today as Nigeria, the Yoruba have lived as an urban people for centuries, with cities dating as early as the tenth century. Yoruba oral histories of these times have been confirmed by archaeological excavations of numerous centers of population, the most important being Ile Ife, the place where the Yoruba are said to have first emerged as a people under kings known as Oni. This lineage of kings constitutes the longest line of rulers recorded. It was at Ife that Yoruba art had its beginnings, in the form of realistically cast bronze sculptures of their rulers, some of which date back to the eleventh century. In succeeding centuries Yoruba art came to be known for its religious and ritual ties, and different art forms became identified with the various deities.

Today the rich tradition of art among the Yoruba is expressed in a number of different mediums — wood sculptures and masks; figures and ritual equipment; ironwork and brass casting; beadwork; paint; and colored textiles. Each cult has incorporated one or several of these artistic mediums into its repertoire, adding an aesthetic dimension to ritual and religious practice. Thus the central feature of Yoruba art is its service to religion and the modes of honoring the pantheon of gods gives them character, personality and visual being. Two of the most prominent deities in Yoruba religious art are Eshu, known as the trickster god, and Shango, the god of thunder and lightning.

Unlike European art styles, which change frequently



over the course of history, the traditional sculptural forms of the Yoruba have changed very little through extended periods of time. Where change is found it is usually the result of creative individuals interpreting traditional images, symbols and iconography. Influences of Islam and Europe may also be observed, brought about through a process of assimilation and incorporation that acknowledges change while maintaining the essence of established Yoruba images. It must be also noted that long periods of apprenticeship for young carvers installs the principle of adherence to established imagery and style. This system of apprenticeship produces master sculptors who emulate the style of their mentors. As his career progresses, the Yoruba artist will build his own sculptural signature, adding stylistic differences and nuances, in an expression of individual creativity.

*excerpt from the catalogue

Elizabeth Bennett and Sara Luther began *Africa Direct* in 1994, when they took their three children and moved to Africa for a year.

They drove 15,000 miles in a used panel van that had been crudely converted into a camper. They saw a great deal of South Africa, Zimbabwe, Swaziland and Botswana. They went because of the people. After they returned to Colorado, selling African art became a fulltime business for them. Their website, africadirect.com, has more than 7500 items listed, and they are among eBay's biggest sellers of African art and trade beads.

Bill and Rita Larson of Fowler, Colorado, sponsored *YORUBA: An Art of Life*. The exhibit will be on view at the South Dakota Art Museum through March 27, 2005. African Dancer Charles Ahovissi will perform on Friday, March 18, at 7:00 p.m. This program is free and open to the public.

Cèlèdé mask, wood and pigment

Education Outreach

In the past, the South Dakota Art Museum's outreach program, *Art in the Schools*, reached out to area schools. Museum volunteers visited schools with original artwork, and elaborated on the Museum's permanent collection and its exhibits. This proved to be very successful and was well received by the school community; however, the original artwork that was used was always in jeopardy of being damaged or destroyed. Thus we had to restructure the program and we came up with a few wonderful ideas.

We have developed new ways to provide South Dakota with educational outreach. The following are ways the South Dakota Art Museum will provide outreach throughout the state.

● **South Dakota History Teacher Packet:** In conjunction with the Fourth Grade South Dakota School Content Standards in History, we have developed a packet that will assist teachers in teaching their fourth grade students the great history of South Dakota. The packet contains text written in the fourth grade level and images from our permanent collection that relate directly to the history standards. For example, a content standard on Mandan Indians would be accompanied by a painting of Mandan Indians from our collection along with text. The packet will also have a CD full of images from the collection including works by Harvey Dunn and Oscar Howe.

● **Dakota Digital Network (DDN – live video conferencing):** Nearly every public and private school in South Dakota is equipped with technology that allows live video conferencing. We want to take our galleries into these classrooms. With assistance from the South Dakota Department of Education, we plan to launch this program starting this winter and spring. A virtual live gallery tour will be offered to all South Dakota schools grades 3-6.

● **Visual Thinking Strategies (VTS):** VTS is a visual arts program for elementary school students and teachers who use art to teach thinking, communication skills, and visual literacy. Growth is stimulated by three things: looking at art of increasing complexity, responding to developmentally-based questions, and participating in group discussions that are carefully facilitated by teachers trained in the VTS program. This program is already being offered to grades K-6.

For more information on any of these new outreach programs, please contact David Merhib, Curator of Education, at 605-688-4313.



Frankenstein the Movie

The Art Museum will show Mary Shelley's *Frankenstein* on Saturday, April 23, at 7:00 p.m in the auditorium. Space is limited so come early. Cost is \$2 per person.

This special feature is in conjunction with the Brookings Public Library's national traveling exhibit "Frankenstein: Penetrating the Secrets on Nature" which opens on March 3, 2005. The display gives local residents the opportunity to learn more about this great literary work and the legacy of film and science it generated. The Library will be offering 10 programs to the public during the exhibit's six-week stay.

For more information on this exhibit, call the Brookings Library at 605-692-9407.



After School by Harvey Dunn

Greetings

How fortunate we are to have such a high quality institution as the South Dakota Art Museum. Its excellent collections and exhibitions give viewers and members insight into the visual art world of South Dakota, the states in our region, the nation, and yes, the world. Here we can get a strong sense of other ideas, other people, other traditions, other problems. We can see the world through the eyes of others. We can sense the interpretation of our past, present and future through the work of both traditional and non-traditional artists.

But you know that as we luxuriate in all this visual awareness and education, we cannot expect it to continue without our support nor can we expect the state or other individuals and corporations to ensure the Museum's excellence continues and grows.

It's really up to us as members to continue the excellence. It's our job and obligation to maintain this jewel of a Museum with our dollars. Consider it a pay-back for the privilege of having this institution available to us all.

Whether your connection comes in the form of on-site visits and classes, the newsletter or the web site contacts, we must assume the responsibility of providing support for these services if we wish time to continue. Maybe it's the experience of seeing the art of others, hearing artists talk about their work, seeing performances that partner with exhibitions, or securing and

maintaining our visual heritage for future generations that touches a response from you.

Soon you will receive the Museum's annual request to respond with membership dollars to help maintain and further its role in the visual art world . . . to even consider increasing your membership level.

Just as we have opportunities and responsibilities to pay back to our communities, our school districts, and our state for our unique privileges, people who care about the South Dakota Art Museum and its place in the regional visual art world have an opportunity and responsibility to take care of it. We need to give back to our communities and institutions as a way to say "Thank you."

We receive so much. You may return some of your bounty by your support of the South Dakota Art Museum. This spring you will receive information asking for your membership dollars and donations to the South Dakota Art Museum to continue your support. The Museum depends upon you to continue the exhibitions and programs you currently enjoy.

Thank you so much for caring and sharing.
– Ruth Brennan, South Dakota Art Museum Board President

Current and Upcoming

Permanent Collections

Marghab Linen: Madeira

November 1, 2004 – May 29, 2005

Take a closer look at the region of Madeira through the stitching on the linens. The country of Madeira offers the lush beauty of sub-tropical plants and visual splendor. This exhibit will take you on a personal journey through the island of Madeira.

Paul Goble

Given by the artist in 1995, the Paul Goble Collection consists of the body of work by the Caldecott Award-winning author and illustrator of children's books. Goble's books depict Native American legends and traditions from the Northern Plains Region. This exhibition will be a survey of Goble's work.

The Oscar Howe Collection

January 18 – October 16, 2005

The SDAM's collection of Oscar Howe paintings is now on view. This extraordinary exhibit depicts the mastery of one of America's finest painters. His paintings are simultaneously primitive and modern, and are simple and subtle. They can be appreciated at a glance or can be studied for many worthwhile hours. The truth is that Oscar Howe is profound and unique, and his paintings are far from being merely "pretty" or "competent."

Featured Exhibitions

Jerry Uelsmann: Photography

November 23, 2004 – March 13, 2005

Jerry Uelsmann has been called a pioneer in the work of photomontage. Through his work, he synthesizes every day objects to depict an altered reality created to "challenge the inherent believability of the photograph." The product of Uelsmann's work is a magical realism of everyday life. His photos, which are all non-digitized black and white, capture subjects from the human form to waterfalls and building structures to vast oceans. Uelsmann's work has been showcased in more than 100 exhibits and is in the permanent collections of many museums worldwide.

South Dakota Artist Series: "Passages"

Vickie Schumacher and Kris Carmody Reaves

November 29, 2004 – March 20, 2005

Vickie Schumacher

Vickie Schumacher works with various forms of nature prints. She prints actual fish, insects, rocks and plants onto paper and then hand colors the prints. Her work provides a calming sense of nature's beauty for the viewer.

Kris Carmody Reaves

Kris Carmody Reaves works in three mediums of art. These mediums are handmade rag paper, hand-built raku fired clay forms, and mixed media on wood. While each medium retains its individuality, Reaves often lets her ideas overlap to create a work with its own unique qualities.

Yoruba: An Art of Life

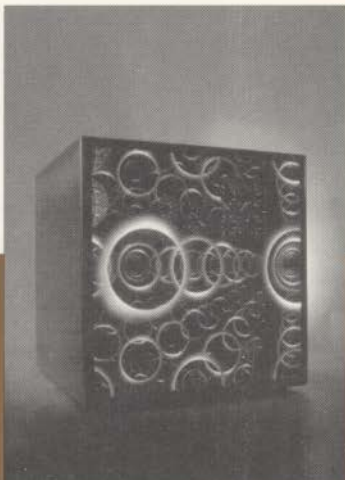
December 11, 2004 – March 27, 2005

Yoruba art dates back as far as the eleventh century A.D. The traditional forms of Yoruba artwork have changed little throughout history and are centered on religious and ritual practices. This exhibit reveals the culture of the Yoruba people. Included are wood sculptures, masks, ironwork, bronze casting, colorful costumes and beadwork, colored textiles and ritual equipment.

Colors of Harvey Dunn

January 25 – August 7, 2005

With his vibrant use of color, Harvey Dunn takes us back to the beauty he saw as reminiscent of his childhood in South Dakota. With his masterful blending of blues, pinks, yellows and reds, these paintings provide a look into the past and allow the viewer to imagine life as it was back in the days of Dunn's youth. Guest Curator Dr. Fatih Benzer, has selected paintings from SDAM's collection that best represent Dunn's colors or lack there of.



World Within a World, by Ray Howlett



Artist, Paul Peterson



Recycle 1, by Larry Negaard

Ray Howlett: Light Sculptures

March 21 – July 31, 2005

Artist Reception, April 8

4:30 – 7:00 p.m.

By using Dichroic color, float glass, stainless sheet metal, mass production, silicone and compact florescent light, Ray Howlett creates magical, unusual sculptures that give a new meaning to three dimension. His approach to sculpture is intellectual and structural, rejecting past art forms to become original in his work. He tries to make memorable art with integrity. He thinks of sculptures as portals and openings into a new kind of space.

South Dakota Artist Series:

Paul Peterson and Tom Thorson

March 29 – July 3, 2005

Artist Reception, April 8

4:30 – 7:00 p.m.

Paul Peterson

Paul Peterson is a South Dakota native who has a vary strong sense of attachment to the people, places and things of this area. For Paul his painting surfaces are a place where mind, matter, and spirit meet. Although most of his work is representational in nature, he often floats objects through space with vivid color that appears as abstract environments.

Tom Thorson

Tom Thorson, an SDSU graduate, thinks of his painting as a pretext to go outside and explore and connect with his surroundings. He says that his paintings hope to offer an experience of affirmed or echoed emotion.

Wayne Thiebaud: Drawings

April 4 – August 14, 2005

Public Reception, April 8

4:30 – 7:00 p.m.

This forty works survey of Wayne Thiebaud's drawings affirms the depth and range of the dynamic artistic style of one of Northern California's seminal artists.

Thiebaud's style is easily identifiable to anyone even remotely familiar to the contemporary art scene, yet he is often overlooked when thinking of the "important artists" of the 1960s and 1970s. This is unfortunate and wrong. People are also generally surprised to find that Professor Thiebaud, in his eighties, is still painting important works.

South Dakota Artist Series:

Ginny Freitag and Larry Negaard

Negaard

July 12 - October 23, 2005

Ginny Freitag

Ginny Freitag lives and works in Madison, South Dakota, where she is a visual design and ceramics instructor at

Dakota State University. Her work mostly consists of mixed media including watercolor, clay, ceramic, acrylics and prints. She enjoys the process of creating a piece of art. Ginny uses found objects from junk boxes, second-hand shops, and back yards. She uses women and animals in her work—literally and symbolically. Ginny wants the viewer to respond to her work based on the viewer's experiences.

Larry Negaard

The art of Larry D. Negaard has been driven by his curiosity. He has explored a wide array of media and styles. The constants in his artistic journey have been the representational image, a high degree of draftsmanship, and an innate sense of composition. From his early works, to his more recent works these constants can be seen. The influences can also be discerned, Robert Rauschenberg, Frank Lloyd Wright and Francis Lee Jacques to name a few.

Harvey Dunn's Portraits

August 16, 2005 –

March 12, 2006

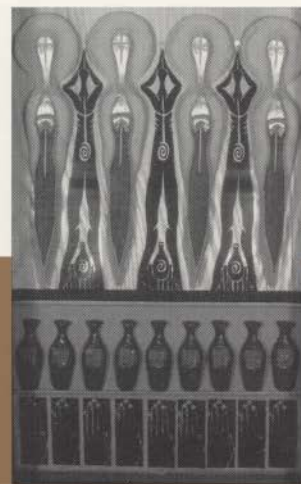
Traditionally known for his remarkable prairie and war paintings and dexterous illustrations, this exhibit portrays Harvey Dunn's equally magnificent portraits. Dunn's portraits include such SDSU notable figures as Ada Caldwell and Dr. Herbert Matthews. This exhibit adds yet another level to Harvey Dunn's illustrious career.



Tree in a Meadow, oil on panel, by Tom Thorson



Epa Masks, wood and polychrome paint



(Detail) *Liz goes up*, mixed media, by Ginny Freitag

Volunteer Spotlight, Elizabeth Berg

The volunteer corps at the South Dakota Art Museum is very important to the Museum and its staff. Their services and commitment are invaluable. We would like to thank each of our volunteers for all the time and dedication they commit to the Museum; it could not function without their help.

This spring's volunteer spotlight is on Elizabeth Berg, who has been involved with the Museum since 1975. Elizabeth volunteers because, she says, "I like to support the arts. I think here in South Dakota we have a wonderful museum and I feel it is just enriching to be a volunteer at the Museum."

Elizabeth is a graduate of Jamestown College in North Dakota and has lived in many places in the United States and abroad including Yugoslavia and Denmark. She moved to Brookings after spending two years in Indonesia.

Elizabeth's hobbies include reading, being involved with campus activities and giving talks on her collection of Indonesian textiles.

When asked why she enjoys volunteer work, Elizabeth replies, "because the people and exhibits at the Museum broaden my own influences and perspectives."

Elizabeth's work and dedication to volunteering are greatly appreciated by all at the Museum. The Museum staff would like to thank Elizabeth for all that she does and we look forward to many more years of her support at the Museum.



African Dancer, Charles Ahovissi

To perform at the SDAM on Friday, March 18, 2005, at 7:00 p.m.

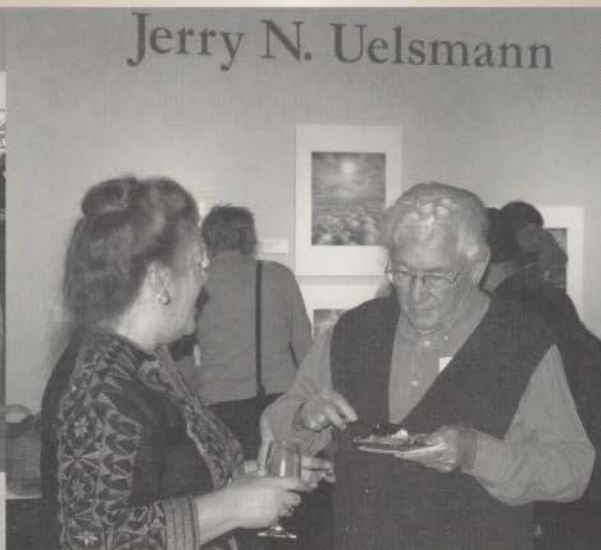


Charles Ahovissi, who lives in Omaha, Nebraska, has traveled the world since 1986 performing and teaching African dance. He shares his love and knowledge of African culture through teaching, dancing, drumming, and singing. Ahovissi, who is originally from Benin, West Africa, is a professional dancer, performer, choreographer, and costume designer. His repertoire includes the three types of traditional African dance: sacred, royal and popular. Ahovissi strives to increase awareness of and appreciation for the African culture in the context of a professional performing art form. By sharing this art form with audiences the world over, he is keeping the African culture alive.

Calendar of Events



Dwight Frizzle at Rosser opening



Elizabeth Bennett and Clare Denton at Yoruba opening



January

22 – Knitting Basics Workshop (day 1)

Multipurpose Room

10:00 a.m. – 12:00 p.m.

\$55 members, \$60 nonmembers

(price includes all 3 days and needles and yarn)

29 – Knitting Basics Workshop

(day 2)

Multipurpose Room

10:00 a.m. – 12:00 p.m.

February

5 – Knitting Basics Workshop

(day 3)

Multipurpose Room

10:00 a.m. – 12:00 p.m.

12 – Valentine's Day Extravaganza

Multipurpose Room

10:00 a.m. – 2:00 p.m.

Free and open to the public

23 – A Celebration of Folk Music and Art

Yoruba Gallery

Begins at 6:00 p.m.

Gallery talk at 6:15 p.m.

Deidre McCalla to perform at 7:00 p.m.

Free and open to the public

25 – Lecture – History of Nigeria

Museum Gallery

Global Studies 201

11:00 a.m.

Free and open to the public

25 – Battleground Celebration & Lecture

Lecture by David Marquis

South Dakota Art Museum Auditorium

7:00 p.m.

Free and open to the public

26 – "Soul Collage" Workshop

Collage artist Deb Anders-Bond

10:00 a.m. – 4:00 p.m.

\$30 members, \$35 nonmembers

28 – Gallery Reading (part 1)

Museum Gallery

Things Fall Apart by Chinua Achebe

Read by Karen Zagrodnik

11 a.m. - 12 p.m.

Free and open to the public

March

2 – Gallery Reading (part 2)

Museum Gallery

Things Fall Apart by Chinua Achebe

Read by Karen Zagrodnik

11 a.m. - 12 p.m.

Free and open to the public

4 – Guided Tour, Yoruba: An Art of Life

Museum Gallery

11:00 a.m.

Free and open to the public

18 – Charles Ahovissi: Yoruba African Dancer

Museum Auditorium

7:00 p.m.

Free and open to the public

April

2 – Watercolor Workshop

10:00 a.m. – 4:00 p.m.

Instructor, Charlene Buescher

\$35 members, \$42 nonmembers

7 – Frankenstein Movie

7:00 p.m.

Museum Auditorium

\$2 admission fee

8, 9 & 10 – Bead Extravaganza!

Workshops and Bead Sale

8 – Bead Sale

11:00 a.m. – 5:00 p.m.

Multipurpose Room

Free and open to the public

Spirals Workshop

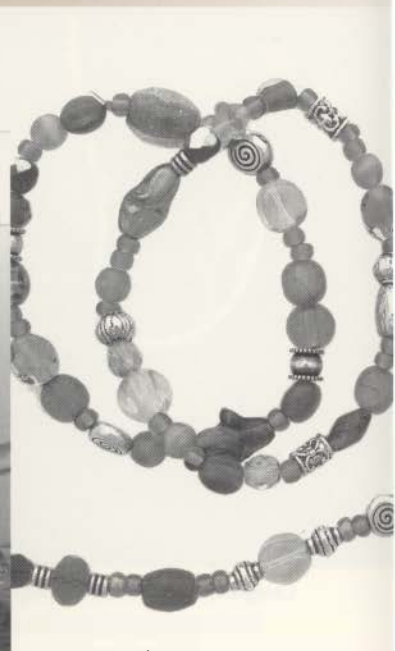
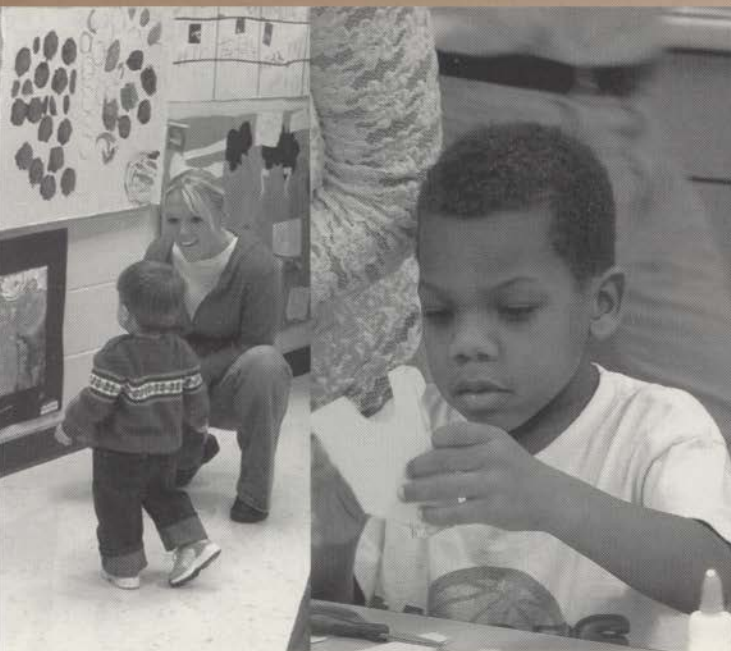
Ages 13 & up

1:30 – 4:00 p.m.

Multipurpose Room

\$30 members, \$35 nonmembers

Calendar of events



Just Bracelets

April

Crystal Lite Workshop

Ages 13 & up
5:00 – 7:30 p.m.
Multipurpose Room
\$30 members, \$35 nonmembers

9 – Bead Sale

11:00 a.m. – 5:00 p.m.
Multipurpose Room
Free and open to the public

Kids' Beading Workshop

Ages 7 - 12
9:00 – 10:30 a.m.
Multipurpose Room
\$15 members, \$18 nonmembers

Just Bracelets

Ages 13 & up
11:30 a.m. – 2:00 p.m.
Multipurpose Room
\$30 members, \$35 nonmembers

Element of Beading Workshop (Necklace and Earrings)

Ages 13 & up
3:00 – 6:00 p.m.
Multipurpose Room
\$30 members, \$35 nonmembers

11 – Bead Sale

11:00 a.m. – 5:00 p.m.
Multipurpose Room
Free and open to the public

Cascade 360° Workshop

Ages 13 & up
12:30 – 2:30 p.m.
Multipurpose Room
\$30 members, \$35 nonmembers

16 – Member's Celebration and Marghab Linen Auction

12:00 – 4:00 p.m.
Museum Gallery and Auditorium
Free to all members
RSVP 605-688-5423



Warren Rosser with student at the Rosser opening



**January 22, 29 and February 5
(Saturdays)**

Knitting Basics Workshop

10:00 a.m. – 12:00 p.m. all 3 days

Multipurpose Room

\$55 members, \$60 nonmembers
(prices include all 3 workshops and
needles and yarn)

Join us as certified knitting teacher Joan
Janes teaches how to create different
fabrics using several cast-on methods,
knit and purl stitches and binding off in
this six-hour class. Several different
project techniques will also be discussed.
The class is both for absolute beginners
and those with some knitting experience.

Saturday, February 12

Valentine's Day Extravaganza!

(All ages)

10:00 a.m. – 2:00 p.m.

Multipurpose Room

Free and open to the public

This year give a gift from the heart. Join
us at the South Dakota Art Museum's
second annual Valentine's Day
Extravaganza. Make a card or a
sculpture, the ideas are endless, and
nothing is too good for that special
someone. Children of all ages are
welcome. Materials and refreshments
will be provided. This event is free to the
public.

Wednesday, February 23

A Celebration of Folk Music and Art:

Deidre McCalla

Begins at 6:00 p.m.

Gallery talk at 6:15 p.m.

Performance at 7:00 p.m.

Yoruba Gallery

Free and open to the public

Come and enjoy the performance of
Deidre McCalla with her unique blend of
folk, rock, country and pop music.
Deidre McCalla's words, music and
stories chronicle our strengths and
weaknesses and celebrate the power and
diversity of the human spirit.

Friday, February 25

History of Nigeria

Gallery Talk

11 a.m. - 12 p.m.

SDSU's Global Studies 201 class has
selected a few students to address the
remarkable history of Nigeria. This event
will take place in the South Dakota Art
Museum's gallery featuring *Yoruba: An
Art of Life*, an exhibit of artwork from the
Nigerian region. This event is free and
open to the public.

Monday, February 28

Gallery Reading (part 1)

Things Fall Apart by Chinua Achebe

Read by Karen Zagrodnik

11:00 a.m. - 12:00 p.m.

Free and open to the public

Things Fall Apart, published in 1958, is
the seminal African novel in English.

Although there were earlier examples,
notably by Achebe's fellow Nigerian,
Amos Tutuola, none has been so
influential, not only on African literature,
but on literature around the world. Its
most striking feature is to create a
complex and sympathetic portrait of a
traditional village culture in Africa.
Achebe is trying not only to inform the
outside world about Ibo cultural
traditions, but to remind his own people
of their past and to assert that it had
contained much of value. All too many
Africans in his time were ready to accept
the European judgment that Africa had
no history or culture worth considering.

He also fiercely resents the
stereotype of Africa as an undifferentiated
"primitive" land, the "heart of darkness,"
as Conrad calls it. Throughout the novel
he shows how African cultures vary
among themselves and how they change
over time. Look for instances of these
variations as you read.

Wednesday, March 2

Gallery Reading (part 2)

Things Fall Apart by Chinua Achebe

Read by Karen Zagrodnik

11:00 a.m. - 12:00 p.m.

Free and open to the public

Friday, March 4

Guided Tour, Yoruba: An Art of Life

South Dakota Art Museum

11:00 a.m.

Free to public

Education Curator David Merhib will
deliver a comprehensive guided tour of
the *Yoruba: An Art of Life* exhibit. This
guided tour is free to the public.

Friday, February 25

Lecture: Battleground Conservation

Lecture by David Marquis

7:00 p.m.

Museum Auditorium

David Marquis will discuss the
conservation process of Harvey Dunn's
painting, *Battleground*. David Marquis is
the senior Paintings Conservator at the
Upper Mid-West Conservation
Association (UMCA).



Workshops



Saturday, January 22

Knitting Basics Workshop

10:00 a.m. – 12:00 noon

Multipurpose Room

“Knitting Basics” is a 6-hour class for both absolute beginners and those with some kind of knitting experience. Be prepared to learn several casts on methods, knit and purl stitches, binding off and how to create different fabrics using these simple techniques. We will knit two small projects – a hanger cover and a felted cell phone or sunglasses case.

Saturday, February 26

“Soul Collage” Workshop

10:00 a.m. – 4:00 p.m.

Deb Anders-Bond

\$30 members, \$35 nonmembers

Working with the language of symbols, dreams and archetypes create your own personalized deck of collaged cards using images you select intuitively. SoulCollage is a deeply satisfying art that anyone can do. Call 688-5423 for more information.

Saturday, April 2

Watercolor Workshop

10:00 a.m. – 4:00 p.m.

Instructor, Charlene Buescher

\$35 members, \$42 nonmembers

Here is your chance to learn watercolor techniques from a professional. Artist Charlene Buescher will teach the ins and outs of how to create a beautiful work of art using watercolors. This workshop is for experienced and beginners. Each participant will take home a finished product. Basic materials are included. Call 688-5423 for more information.

Bead Extravaganza!

Instructor Leslie from The Bead Monkey stores in Minneapolis & St. Paul present a variety of beading workshops and a 3-day bead trunk sale, April 8, 9 & 10.

Trunk Sale

Multipurpose Room

Friday, April 8, 5:00-7:30 p.m.

Saturday, April 9, 9:00 a.m.-5:00 p.m.

Sunday, April 10, 11:00 p.m.- 4:00 p.m.

Classes

Class sizes are limited, so please pre-register by April 5.

Tools are provided for the classes, beads and supplies are extra.

Friday, April 8

Spirals Workshop

1:30 – 4:00 p.m.

Ages 13 and up

\$30 members, \$35 nonmembers

Learn the 3-D spiral stitch. It is easy for a beginner to master, yet the design possibilities will intrigue even the experienced beader.

Crystal Lite Workshop

5:00 – 7:00 p.m.

Ages 13 and up

\$30 members, \$35 nonmembers

Glitzy and sophisticated, you'll want to make this delicate, crystal bracelet in many colors. Leslie will teach you the stitch and embellishing technique in this new class suitable for beaders of all levels.

Saturday, April 9

Kid's Beading workshop

9:00 a.m. – 10:30 a.m.

Ages 7-12

\$15 members, \$18 nonmembers

Come One, Come All! Do you like beading? Do you like hands-on workshops? This is the place for you. Learn the ins and outs of bead making and make your own jewelry at this exciting workshop.

Just Bracelets

11:30 – 1:30 p.m.

Ages 13 and up

\$30 members, \$35 nonmembers

Calling all bracelets enthusiasts! Beading bracelets are one of the hottest fashion accessories around. Our bracelet experts will show you three different techniques for assembling and finishing your own creations for your wrist.

Elements of Beading Workshop

11:30 a.m. – 1:30 p.m.

Ages 13 and up

\$30 members, \$35 nonmembers

Ready to jump into the world of beading? In this introductory techniques class, you'll make a necklace and bracelet while learning about beads, tools, findings, and other materials available to the jewelry maker. Kits available.

Sunday, April 10

Cascade 360° Workshop

11:30 – 1:30 p.m.

Ages 13 and up

\$30 members, \$35 nonmembers

Teach your jump rings new tricks. Leslie will show you how to combine jump rings and seed beads into a beautiful, cascading necklace. Top it off with a pendant and tassel to showcase your favorite lamp-work bead. Use this technique to make earrings to match.

South Dakota State University

SOUTH DAKOTA Art MUSEUM

Medary Avenue at Harvey Dunn Street
Box 2250, SDSU
Brookings, South Dakota 57007-0899
(605) 688-5423

E-mail: sdsu_sdam@sdstate.edu

Web: sdartmuseum.sdstate.edu

Accredited by the American Association of Museums

Free public hours are:

Monday – Friday 10:00 a.m.–5:00 p.m.

Saturday 10:00 a.m.–4:00 p.m.

Sunday and holidays 12:00 p.m.–4:00 p.m.

(Closed on State holidays – please call ahead)

Board Member Highlight

Phyllis Bell

Phyllis Bell has been on the Museum's Board for over four years. Her contribution to the Art Museum has been tremendous, both with ideas toward the Museum's future and her family ties regarding Harvey Dunn's paintings. Phyllis's father, Aubrey Sherwood, who knew the Dunn family and was an avid admirer of Harvey's paintings, told stories of Harvey's beginnings as an artist and how SDSU (and eventually the South Dakota Art Museum) became a home for a large portion of Dunn's paintings.

The more familiar Phyllis became with the Art Museum's mission, the more she learned that the Museum isn't just Dunn paintings. Phyllis says, "It was soon apparent that the Museum's goals went far beyond displaying Harvey Dunn's paintings, and that has made working with the Museum's dedicated board and staff exciting." Phyllis enjoys the Board meetings and she says that "each meeting is a stimulating interaction between [board] members who take time to get to Brookings and be a part of the backup decisions necessary in creating an Art Museum that will attract and satisfy the needs of a variety of visitors."

When asked what she enjoys most about being a Board member, she comments by saying that it is a "privilege to watch the Museum grow under the expertise of a warm and goal-oriented staff."

Phyllis is a native to De Smet, SD, and in her own words, "[She] longed to get away." She graduated from Macalister College, St. Paul, Minnesota, and then lived with her husband Bob in Vermillion; Omaha, Nebraska; Oakland and San Francisco, California; and Yankton before hearing her husband say, "I'd like to practice medicine in De Smet." She says, "He's a wise man, because this [De Smet, SD] is where we were meant to be."

Phyllis and her husband, Bob, have five children who visit them each year in their summer home in the Black Hills. Her hobbies include playing organ in their church and fishing both in the summer and winter. At home she has become the "keeper of the flame," binding her family and friends to the "good life of South Dakota."

We at the Art Museum appreciate all that Phyllis has added to the fulfill the Museum's mission and goals.

"It was soon apparent that the Museum's goals went far beyond displaying Harvey Dunn's paintings, and that has made working with the Museum's dedicated board and staff exciting."

Celebration of Learning

The South Dakota Art Museum and SDSU's Early Childhood Education department have collaborated on various occasions, from professional development workshops to group tours for preschoolers and ECE students. The latest collaboration was an exhibit in the Art Museum titled "Celebration of Learning."

The SDSU Laboratory Preschool teachers and staff developed this exhibit. Every level of the preschool created and designed their display, which consisted of sculptures, drawings, paintings, and designs. A reception was held in the Art Museum, where the children brought their families to "show-off" their artwork. Over fifty people attended.



MEMBER'S C E L E B R A T I O N

in conjunction with

Marghab Linen Auction

hosted by

Susanin's Auctions

Saturday, April 16, 2005

12:00 — 4:00 p.m.

The South Dakota Art Museum wants to say "thank you" to all its members. Join us on Saturday, April 16, at the Art Museum for a celebration for all of those that make the Art Museum what it is today. The celebration will be exclusively in honor of all Museum members and their guests.

SUSANIN'S Auctions in Chicago, Illinois, is the largest fine art auction company in the Midwest. A special national campaign will be created and launched for the Marghab Linen auction. A concise, fully illustrated black and white and color catalogue is produced and distributed by SUSANIN'S. Each catalogue will provide detailed descriptions and pre-auction estimates for each lot included in this sale.

Their catalogue is available on the World Wide Web at **www.auctionsmart.com**. Browsers from around the world can preview the entire catalogue complete with full color illustrations and descriptions. Live on-line bidding takes place during all auctions. Telephone bids and absentee bids are also accepted by SUSANIN'S, making the bidding process convenient and easy for anyone wishing to participate in their auctions. To register for this auction, simply visit their website and follow the easy steps to become a registered bidder. Or, call their offices at (312) 832-9800.

Computers will be available at the Museum for on-line bidding during the celebration. To R.S.V.P. please call the Museum at 605-688-5423.

Thank You

HARVEY DUNN'S "BATTLEGROUND" RETURNS!

Night of Celebration

South Dakota Art Museum

Friday, February 25

7:00 p.m.

Join us for a night of unveiling history as we reintroduce Harvey Dunn's *Battleground* to the public. After 18 months of treatment, the painting is now back at the Art Museum.

David Marquis, Senior Paintings Conservator from the Upper Midwest Conservation Association, will deliver a talk on the treatment of *Battleground* on Friday, February 25 at 7:00 p.m. A reception will follow the talk, and David Marquis will be available in the gallery for questions and answers. For more information on this event call 605-688-4313.

Battleground was conserved thanks to the generous contribution from Maree Larson. People interested in supporting the Art Museum's conservation project or would like to sponsor a specific painting, please contact Lynn Verschoor at 605-688-4279.

The Museum is very appreciative of the commitment and contributions from both South Dakota State University and private donors offering to assist with the Museum's conservation project.

CONSERVATION UPDATE





Museum Store

Harvey Dunn Reproductions

Now Available in Giclee:
The Prairie is my Garden
Storm Front
Something for Supper
Just a Few Drops of Rain
After School

Conservation

Help us conserve our collection! 20% of the gross sales of Harvey Dunn reproductions and merchandise will be donated to the South Dakota Art Museum's conservation efforts. The goal of our efforts includes preserving the collection for future generations to enjoy.

The Prairie is My Garden Merchandise

T-shirts	Coffee Mugs
Journals	Bookmarks
Canvas Bags	Jigsaw Puzzles
Note cards	Postcards

Featuring the work of area artists

Pottery: Cherie Ramsdell, Michael Hill, Sue Christensen, Lonie Teachout

Handmade Jewelry: Kimberly Clark, Just Plain Jane, Jill Zimmer, Christa Landreth and more

Native American Items: JoAnn Bird, Red Cloud Indian School, and Michael Bates

Hand Blown Glass: Jon Offutt, Loy Allen, Black Hills Glass Blowers

Books: Native American history and culture

Regional Books: we have one of the largest, more interesting collection of regional books in the area

Cookbooks: Regional and International

CDs: we have expanded our selection of local CDs to include Brulé, Rochford Jazz Ensemble, Red Willow Band, John Mills and many more

Beads: we now sell seed beads and individual beads from Africa

Now Available

Marghab Linen Book,
Perfection, Never Less: The Vera Way Marghab Story
by D. J. Cline

South Dakota Art Museum Membership Application/Renewal

Our members are vital to the continued development of the South Dakota Art Museum and, in turn, the Art Museum makes our members' lives much richer through the arts.

Basic Membership Benefits (Renewed Annually)

- 10% discount on Museum Store purchases.
- 20% discount on Museum classes and workshops.
- Subscription to the *South Dakota Art Museum News* and other Museum mailings.
- Recognition in the annual membership issue of the *News*.

Contributing Membership Benefits

In addition to your dues, your contribution to the Museum will help to purchase works of art and aid in Museum operations and programming. These contributions also fund publications, scholarly research on collections, conservation of art works, and their restoration. Contributing members receive all of the basic membership benefits plus the special benefits listed below.

Contributor (\$100 and above)

- Family membership for two adults and their children through age eighteen.
- Basic membership benefits.

Donor (\$500 and above)

- All benefits above, plus one free gift membership to a friend.
- Recognition for your level of giving on donor panels.

Supporter (\$1000 and above)

- All benefits above, plus one additional free gift membership to a friend.

Sustainer (\$5000 and above)

- All benefits above, plus receive recognition as a sponsor or

co-sponsor of a SDAM exhibition or program selected in collaboration with the director.

Benefactor (\$10,000 and above)

- All benefits above, plus receive recognition as a sponsor or co-sponsor of two SDAM exhibitions or programs selected in collaboration with the director.

To join, simply fill out the attached form and mail it to the South Dakota Art Museum with your check or credit card information. Call the Museum Office at (605) 688-5423 if you have questions regarding membership or wish to pursue other ways of giving.

Volunteer opportunities are available.

Call (605) 688-5423 for more information.

Different ways of "giving" to the South Dakota Art Museum.

Virginia and Dario Enriquez of Minnesota purchased a weaving from the South Dakota Artist Grete Bodogaard, titled *Missouri River Morel, 1999*. The piece was donated in the memory of longtime guild member and supporter Mildred Gastler. This was an in-kind gift to the Art Museum and fit in with our acquisition requirements. This generous gift is one of many ways people can make contributions to the Art Museum.

* Correction on SDAM's Fall 2004 newsletter. It was stated that the SDAM purchased *Missouri River Morel, 1999*, by Grete Bodogaard, when in fact Virginia and Dario Enriquez purchased the piece as a memorial for their mother for Mildred Gastler.

THE SOUTH DAKOTA Art MUSEUM NEEDS You

Full Name(s) _____

Address _____

City _____ State _____ Zip _____

Telephone (____) _____

E-mail _____

Basic Memberships

SDSU Student	FREE
Individual	\$30.00
Family	\$40.00

(Up to two adults in one household and their children through age eighteen.)

Contributing Memberships

All contributing memberships are for up to two adults in one household and their children through the age of eighteen. Discounts are available for all those persons listed on the membership.

Contributor	\$100-499
Donor	\$500-999
Supporter	\$1,000-4,999
Sustainer	\$5,000-9,999
Benefactor	\$10,000 and above

Please list children through age 18 to be included in a family or contributing membership:

Name _____

Name _____

Name _____

Check enclosed

Charge, I wish to use

Mastercard/Visa # _____

Expiration Date _____

Signature _____

TOTAL MEMBERSHIP \$ _____

Your entire membership is tax deductible to the full extent of the law.

Membership

South Dakota Art Museum
Box 2250, South Dakota State University
Brookings, SD 57007

Grants Awarded

Operation Round Up – Sioux Valley Energy

The South Dakota Art Museum is pleased to announce that it has been awarded \$1000 for Educational Supplies from the Sioux Valley Energy's grant program Operation Round Up. Operation Round Up gathers voluntary contribution from participating cooperative customers by "rounding up" their monthly bills to the next dollar – resulting in an average donation of roughly \$6 per year, which is distributed to worthy local causes. Small change indeed, but multiplied by their 18,000 customers, it is "small change that changes lives." The Operation Round Up program is intended to benefit people and organizations within the Sioux Valley Energy service area. Its funds may be used for community service projects, economic development, education and youth programs, environmental projects, emergency energy assistance and disaster relief.

National Endowment for the Humanities

The South Dakota Art Museum is pleased to announce that it has been awarded a \$5000 grant to re-matt, frame and store 24 paintings by South Dakota Artist Oscar Howe. This grant was made possible through funding by the National Endowment for the Humanities. In addition, this project has been designated by the NEH as a "We the People" project. The goal of the "We the People" initiative is to encourage and strengthen the teaching, study, and understanding of American history and culture through the support of projects that explore significant events and themes in our nation's history and culture and that advance knowledge of the principles that define America. The project is slated to be completed by June 30, 2005. The South Dakota Art Museum, as steward of the state's art treasures, collects, preserves and exhibits art for the people of South Dakota in order to increase access to and appreciation of the visual arts.

BOARD OF TRUSTEES

Ruth Brennan, Rapid City, President
Sharon Casey, Chamberlain, Vice President
Diane Anderson, Sioux Falls
Phyllis Bell, DeSmet
Marilyn DeLong, St. Paul, MN
Tim Dougherty, Sioux Falls
Christine Hamilton, Kimball
Rolland Johnson, Monument, CO
Jerry Jorgensen, Brookings
Maree Larson, Brookings
Rita Larson, Fowler, CO
Lanniko Lee, Java
RaVae Luckhart, Rapid City
Pat Meyer, Brookings
Peggy Gordon Miller, Brookings
Larry Ness, Yankton
Jack Stengel, Milbank
Susan Wischmeier, Aberdeen

GUILD DIRECTORS

Donna Ritter, President
Harriet Swedlund, Vice President
Carol Johnson, Secretary
Sharon Van Riper, Treasurer
Naomi Gilkerson, Historian
Pam Warren & Liz Williams, Member at Large

STAFF

Lynn Verschoor, Director
David Merhib, Curator of Education
Lisa Scholten, Curator of Collections
John Rychtarik, Curator of Exhibitions
Pam Adler, Museum Store Manager/
Program Assistant
Shayla Waugh, Assistant Editor

This newsletter is sponsored by: M.A. and Karen Lund at BANKFIRST, Brookings Friends of the Arts and the South Dakota Arts Council with funds from the State of South Dakota, through the Department of Tourism and State Development, and the National Endowment for the Arts.

Directions: 1/2 miles West from Interstate 29 on Hwy 14, turn right on Medary Avenue, 4 blocks to Harvey Dunn Street. Museum is on the right.

15,000 copies of this document were printed by the South Dakota Art Museum at a cost of \$63 each. MA001 2/05



SOUTH DAKOTA ARTS COUNCIL
support is provided with funds from the State of South Dakota, through the Department of Tourism and State Development, and the National Endowment for the Arts.

South Dakota State University

SOUTH DAKOTA *Art* MUSEUM

Medary Avenue at Harvey Dunn Street
Box 2250, SDSU
Brookings, South Dakota 57007-0899
(605) 688-5423

E-mail: sdsu_sdam@sdstate.edu

Web: sdartmuseum.sdstate.edu

Free public hours are:

Monday– Friday 10:00 a.m. – 5:00 p.m.

Saturday 10:00 a.m. – 4:00 p.m.

Sunday and holidays 12:00 p.m. – 4:00 p.m.

(Closed on State holidays – please call ahead)

CHANGE SERVICE REQUESTED

NON-PROFIT
US POSTAGE PAID
BROOKINGS SD
PERMIT 24

VAN BUREN, STEPHEN
BRIGGS LIBRARY
2115
BL