

South Dakota State University

Open PRAIRIE: Open Public Research Access Institutional Repository and Information Exchange

South Dakota Art Museum Newsletters and Publications

Fall 2005

South Dakota Art Museum Newsletter, Fall 2005

South Dakota Art Museum

Follow this and additional works at: https://openprairie.sdstate.edu/sdam_news



Dean H.B. Mathews,
by Harvey Dunn, oil on
canvas

*"Know your
man. Then
paint what
you know."*

Harvey Dunn

Harvey Dunn's legacy as a painter, teacher and, soldier are commonplace in the minds of those who take pleasure in his artistic career. Dunn's portraits of family, friends, administrators, and personalities are known by few. Dunn's portraits tell stories of heroism. Each figure is stoic, yet mysterious, giving the viewer an idea of what "might" be going on in the mind of the model.

Dunn's portraits combine raw talent with compassionate knowledge of the subject. Dunn said, "Know your man. Then paint what you know." His portraits are a reflection of his philosophy of painting. He once said paintings should have four dimensions: length, breadth, depth, and an indefinable quality called spirit. The portraits that are on exhibit clearly show these qualities and share Dunn's mastery of the palette and canvas.

Stylistically, Dunn's portraits carry the same quality of his more famous paintings. Their stark backgrounds bring the image forward; his depictions of the face and hands bring forth emotions, similar to his prairie paintings. His interpretations bring the subject to life, allowing the viewer to almost hear the heart beat and see the blood running through the veins. His style challenges you to look closely at every detail.

This extraordinary exhibit, *Harvey Dunn's Portraits*, will be on view through February 12, 2006. A lecture by V.J. Smith and Amy Dunkle titled "Great Legacies" will be held on October 20 at 7:00 p.m. followed by a reception. Call the Museum for more information.

New Acquisitions

Harvey Dunn



Untitled, by Harvey Dunn, oil on canvas

"Grandfather didn't mince his words, and he didn't tiptoe around the canvas . . . bold, strong, free . . . paintbrush and he!" Deborah Dunn Wessells

The South Dakota Art Museum is pleased to announce the generous gift of six Harvey Dunn portraits given by three of Harvey Dunn's granddaughters, Deborah Dunn Wessells, Andrea Dunn Williams, and Alice Dunn Martin. These six portraits will be displayed in the exhibition, *Harvey Dunn's Portraits*, August 16 through February 12, 2006.

A gift of this magnitude is a treasure to any museum, and will be a superb addition to the South Dakota Art Museum's permanent collection. The three "Dunn Girl" sisters, dubbed by Ms. Wessells, knew firsthand of the South Dakota Art Museum and of Dunn's work that adorned the interior. Of one visit to the Museum, Wessells recalls: ". . . those pictures glowed like opals against the [once] rep-streaked gray flannel walls. I remember thinking I had never seen such a beautiful installation." The Museum has changed, but the energy and beauty of the Dunns have stayed the same.

The granddaughters entertained the idea of giving the six portraits to the Brandywine River Museum in Chadds Ford, Pennsylvania; instead, all three sisters felt strongly that the paintings belonged in South Dakota at the South Dakota Art Museum. The Six Old Men (as called by Wessells) are traced back to an actor's home that was very close to Harvey Dunn's studio in Tenafly, New Jersey. They believed that their grandfather used some of the retired actors as models. Walt Reed, of Illustration House in New York City, thought that Harvey may have painted them alongside his students while teaching class.

Each of these portraits gives us, the viewers, a larger look into the creativity and talent of Harvey Dunn's legacy. We especially thank the three "Dunn Girl" sisters for their generosity in donating this extraordinary gift.

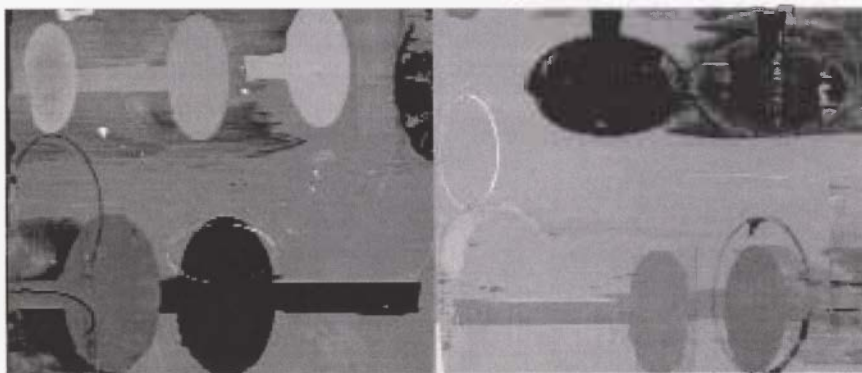
Warren Rosser

The South Dakota Art Museum would like to thank Warren Rosser for his generous donation of his painting, *Slip-Wear*, to our permanent collection.

Warren Rosser was born in Wales, United Kingdom, and now lives and works in Kansas City, Missouri. He is the Chairman of the Painting/Printmaking Department at Kansas City Art Institute.

During the past couple of years, he has produced more than forty paintings. These large new paintings are produced using palette knives, stencils, squeegees, and masking tape in lieu of paintbrushes.

This new acquisition is a magnificent addition to our permanent collection.



Slip-Wear, by Warren Rosser, 2000, oil on canvas

Featured Exhibitions



Onomatopoeia by Signe Stuart, Sumi Ink, acrylic and collage

Signe Stuart: Scrolls

August 23, 2005 – November 21, 2005

September 16 – Artist Reception, 4:30-7:00 p.m.

Gallery Talk - 5:30 p.m.

Signe Stuart's works fall into two general categories: works on sewn canvas and works on paper. Her most recent creations are scrolls made with sumi ink and acrylic on mulberry paper. She says, "Imagery in the scrolls has evolved into visual streams of consciousness rooted in experiences of nature. Many contain a musical rhythm." She uses her work to search for images that evoke a resonance of one's being. The scrolls can be viewed in their entirety or several feet at a time to experience the evolution of magnificent abstract shapes, patterns, and rhythms.

Originally from East Lyme, Connecticut, Signe Stuart earned her Bachelor of Arts degree at the University of

Connecticut and was awarded a scholarship to study at the Yale-Norfolk Summer Art School. It was here, under intense studio work and critiques by visiting artists from New York City, that Stuart made the decision to become an artist. She attended graduate school at the University of New Mexico in Albuquerque. Stuart moved to Brookings with her husband, Joseph Stuart, former SDAM director, in the early 70s when she became employed in the Visual Arts Department at SDSU. In the 80s she began working with sewn canvas and exploring works on paper. Signe and her husband retired to Santa Fe, New Mexico, in the mid-90s and she began her scroll work in 2001.

Native American Artists – After Lewis and Clark

November 3, 2005 – January 8, 2006

November 3 – Guest Lecturer Frank Pommersheim, 7:00 p.m.

No interpretation or presentation of the Lewis and Clark Expedition can be made without acknowledging the enormous contributions Native Americans made toward the success of the Expedition. The Montana Museum of Art & Culture in Missoula designed this national traveling exhibition to acknowledge the importance of these contributions and examine the consequences of the Expedition. The South Dakota Art Museum is pleased to take part in this exhibition.

Regardless of how historians assess the significance of the Corps of Discovery Expedition, undeniably it opened a vast area to settlement by non-Native peoples, an irreversible trend that has had a devastating effect on Native American lifestyles and cultures. The bicentennial of the Expedition offers the opportunity to reflect upon the recent history of the West from different perspectives, including the insights shared by the people who called this land home for thousands of years prior to the arrival of Lewis and Clark and the Expedition's long-term consequences. Some of these artworks seem to look back to the past, although they also have a strong contemporary element. They employ a contemporary art language to suggest connections between a proud, but oftentimes painful past, and the present situation of American Indians.

The Scream, mixed media installation, 2003,
24" x 15" x 14", by Robert Gopher



Current and Upcoming

Permanent Collections

The Oscar Howe Collection

January 18, 2005 –

October 16, 2005

The SDAM's collection of Oscar Howe paintings is now on view. This extraordinary exhibit depicts the mastery of one of America's finest painters. His paintings are simultaneously primitive and modern, and simple and subtle. They can be appreciated at a quick glance or studied for many worthwhile hours. The truth is that Oscar Howe is profound and unique, and his paintings are far from being merely "pretty" or "competent."

Harvey Dunn's Portraits

August 16, 2005 –

February 12, 2006

Traditionally known for his remarkable prairie and war paintings and dexterous illustrations, this exhibit portrays Harvey Dunn's equally magnificent portraits. Dunn's portraits include such notable SDSU figures as Ada Caldwell and Dr. Herbert Matthews. This exhibit adds yet another level to Harvey Dunn's illustrious career.

Marghab Linens: The Stitch

June 6, 2005 –

October 30, 2005

Madeiran embroidery is limited to the use of eighteen basic stitches and one technique. Embroidery from the island of Madeira must only utilize these in order to be labeled as "Madeiran." The government ensures that only traditional embroidery methods are used by inspecting each piece before it can be labeled and sold. The eighteen stitches have been used by Madeiran women for over 250 years with virtually no modifications to materials or methods.

The Marghab Collection

November 10, 2005 –

May 28, 2006

An amazing array of the Marghab Linen collection will be displayed in this extraordinary exhibit. On view are different styles of Marghab's embroidery patterns. This compilation of linens is a broad example of what the SDAM's permanent collection has to offer.

SDAM Collection

November 30, 2005 –

March 26, 2006

The South Dakota Art Museum has over 6,000 works in its permanent collection. Visitors will have the chance to take a look inside that collection with this exhibit, which will showcase contemporary works selected by the Museum's staff.

Featured Exhibitions

South Dakota Artist Series:

Ginny Freitag and Larry Negaard

July 12, 2005 –

October 23, 2005

Artist Reception

September 16 – 4:30-7:00 p.m.

Gallery Talk - 5:30 p.m.

Ginny Freitag

Ginny Freitag has a great love of working with clay. She finds the rhythmic rolling of coils to be somewhat of a personal ritual in becoming more at peace with all that she encounters. Ginny says she is inspired by people, nature, art history, and the idea of women as vessels, receptacles, and guardians. She is interested in the form, texture, and the uncontrolled beauty of raku firing. Ginny Freitag is currently an art instructor at Madison Central School in Madison, South Dakota.

Larry Negaard

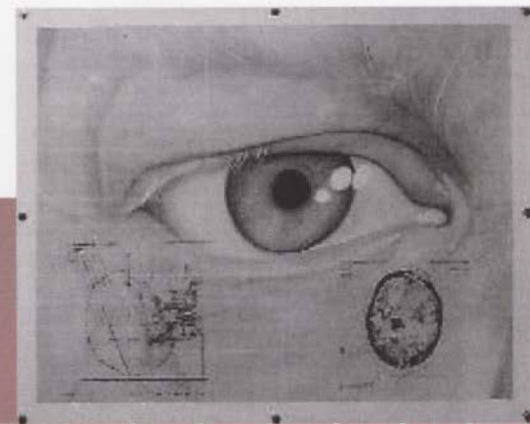
The art of Larry D. Negaard has been driven by his curiosity. He has explored a wide array of media and styles. The constants in his artistic journey have been the representational image, a high degree of draftsmanship, and an innate sense of composition. From his early works to his more recent works, these constants can be seen. His influences can also be discerned: Robert Rauschenberg, Frank Lloyd Wright, and Francis Lee Jacques, to name a few.



Untitled, by Harvey Dunn, oil on canvas



Four Directional House, Astroturf, paper, twine, red cedar, by C. Maxx Stevens



Eye, by Larry Negaard, pencil drawing with transfers

Exhibitions

Signe Stuart: Scrolls

August 23, 2005-

November 21, 2005

Artist reception

September 16 – 4:30-7:00 p.m.

Gallery Talk - 5:30 p.m.

Signe Stuart's most recent body of works are scrolls made with sumi ink and acrylic on mulberry paper. Stuart sees her works as metaphors for nature, both seen and unseen. She uses her work to search for images that evoke a resonance of one's being. The scrolls can be viewed in their entirety or several feet at a time to experience the evolution of magnificent abstract shapes, patterns, and rhythms. Signe and her husband, former SDAM Director Joseph Stuart, will be attending the reception.

The Fabric of Community:

Traditional Textiles of

South Dakota

September 11, 2005 –

December 3, 2005

Family Day, September 24

Lakota star and Mennonite quilts, Norwegian Hardanger embroidery, Czech costumes, and Finnish rag rugs are just a few of the textile arts to be featured in this Folk Arts exhibit. These are traditions that have been passed down in families, tribes, ethnic groups, and other communities, and that survive and thrive today because they are woven into the fabric of community. "The Fabric of Community" is a project of the South

Dakota Arts Council and the South Dakota Art Museum, with support from the South Dakotans for the Arts, with funding in part by a grant from the National Endowment for the Arts.

Native American Artists –

After Lewis and Clark

November 3, 2005 –

January 8, 2006

November 3 - Guest Lecturer

Frank Pommersheim, 7:00 p.m.

No interpretation or presentation of the Lewis and Clark Expedition can be made without acknowledging the enormous contributions Native Americans made toward the success of the Expedition. The Montana Museum of Art & Culture in Missoula designed this national traveling exhibition to acknowledge the importance of these contributions and examine the consequences of the Expedition. The South Dakota Art Museum is pleased to exhibit this extraordinary work.

South Dakota Artist Series:

George Prisbe and Dick Edie

November 3, 2005 –

March 5, 2006

Artist Reception

November 18 – 4:30-7:00 p.m.

Gallery Talk - 5:30 p.m.

George Prisbe

George Prisbe says his life in South Dakota has a great impact on his art. He feels the natural world has influenced

and seduced his work as a landscape artist. Prisbe feels that in nature, one is free to find his own voice. This display of Prisbe's work takes the viewer into the breathtaking landscapes that South Dakota is known for.

Dick Edie

Dick Edie finds pleasure in the surprises created in working with ceramics; in never knowing just how the product will appear when coming out of the kiln. This surprise can be wonderful or devastating; wonderful when it appears as first conceived, devastating when it doesn't, and magnificent when the finished product is better than anticipated. Edie feels that even unfired clay has its own way of behaving extravagantly when at the right degree of plasticity.

William Thielen

December 12, 2005 –

April 2, 2006

William Thielen feels his works are about looking for emotional truth in a post-modern world. He says that when creating pictorial or sculptural objects, it is risky to trust the intuitive nature of emotions and the intellectual information that come from observation. To overcome this risk, he works in the language of abstraction. Thielen creates tension through his works by thrusting opposites together. To resolve this tension, viewers must work through a metaphorical language to find the truth in the works.



Untitled, by Ginny Freitag



Untitled, by George Prisbe



Priralized, by Dick Edie

Outreach



Celebration of Learning
Reception

Arts Challenge Grant

The Arts Challenge Grant was awarded to the South Dakota Art Museum in the spring of 2005. This grant provides support to promote public awareness and support for the arts, assists in advancing the arts as an essential element to education through arts programming for K-12 students, and promotes life-long learning arts experiences. This grant was made possible by the South Dakota Arts Council, whose support is provided with funds from the State of South Dakota through the Department of Tourism and State Development, and the National Endowment for the Arts.

Mentoring Program Grant

The South Dakota Art Museum is pleased to announce the acceptance of the Mentoring Program Grant from the Upper Midwest Conservation Association (UMCA). This grant entails two on-site visits by UMCA Director of Field Services Neil Cockerline. The visits will first assess and prioritize the South Dakota Art Museum's Native American Art Collection and then outline proper storage needs to house the work. The subsequent visit will consist of a

workshop for staff and volunteers on the proper way to make storage containers for the collection. This grant was made possible through UMCA and a generous grant from the National Endowment for the Humanities. Additional support came from The Saint Paul Companies, Inc. Foundation.

Celebration of Learning

The South Dakota State University Center for Early Childhood Education (ECE) celebrated by showcasing the children's experiences, long term studies, and learning hosted by the South Dakota Art Museum. The public was invited to view artworks chosen by the children and the ECE teachers to illustrate their engaged learning activities throughout the spring semester. Documentation panels described the process of learning, the teachers' insights within the long term studies, and the children's perspectives of learning through dialogue regarding the studies.

The ECE Department is extremely excited about the relationships that have developed between the faculty of the SDSU Early Childhood Education Center and the staff of the South Dakota Art Museum. There are two new projects that have stemmed from ongoing interactions this year. The first project is Visual Thinking Strategies with the children of the Fours & Fives Labs and the Kindergarten Labs.

The second project that has begun is a grant proposal to support an ongoing, long-term dialogue with teachers and art professionals to facilitate teachers' experiences of integrating the arts into education. This project is in the very initial stages of development. The SDSU Early Childhood Education Department looks forward to continuing to build future collaborative projects with the South Dakota Art Museum!

Agri-Cultural Alliance

Agri-Cultural Alliance is a group that fosters markets for artists and specialty producers in South Dakota through development and enhancement of agritourism networks. Their vision is to promote specialty producers and artists that share common challenges in identifying and cultivating a customer

base for their products/creations, particularly in rural areas. By working together, we can create a critical mass of unique activities, events, sites, and attractions to draw potential customers to an area. We believe that South Dakota can offer a unique experience by including the broad spectrum of rural

community culture — artists and artisans, family-owned farms and ranches, museums, events, etc.

The AgriCultural Alliance conference will be at Cedar Shores in Chamberlain, South Dakota, on October 25 and 26. For more information, please Call Lynn Verschoor at 605-688-4279.

Public Programs



Growth Thru Art—Myrtle First, Arley Larson, Lynn Verschoor, and Marcus Bohn Celebration of Learning reception

September

9 – Traversing the Grid – Reception

Visit www.dvagi.org for more information.

Traversing the Grid is a program sponsored by Design and Visual Arts Group, Inc. Their goal of this conference is to create 21st century global connections for art and design across the I-29 / I-90 grid of business and industry. A reception will be held at the Art Museum on the opening night of the conference.

10 – Knitting Basics: Part One

Instructor: Joan Janes
Multipurpose Room
9:00 – 11:00 am
\$25 members / \$30 non-members

Join certified knitting instructor Joan Janes as she shares her knitting techniques. This class is for the absolute beginner, who will learn how to cast on, purl and bind off, recognize types of knit fabric, correct twisted stitches, and discuss possible projects. Pre-registration is required.

10 – Knitting Workshop: Sock Knitting

Instructor: Joan Janes
Multipurpose Room
12:00 noon – 4:00 pm
\$35 members / \$42 non-members
Prerequisite: very comfortable with knit and purl. Joan Janes will teach the art of sock knitting. During this class, students will work on a small child's worsted

weight sock. They will knit in the round on double pointed needles, work ribbing and stocking stitch, work a heel flap and heel turn, pick up and knit stitches, work paired decreases and the Kitchener stitch (grafting). Pre-registration is required.

16 – Artist Reception

Signe Stuart, South Dakota Artist Series:
Ginny Freitag and Larry Negaard
4:30 – 7:00 pm
Gallery talk at 5:30
Free and open to the public

17 – Watercolor Workshop

Artist Charlene Buescher
Multipurpose Room
10:00 am – 4:00 pm
\$40 members / \$48 non-members

This class is a friendly, step-by-step study of techniques for beginners as well as experienced artists. Students learn a solid foundation by learning techniques to overcome common problems of watercolor. Class includes demonstration, basic materials, and discussion. Pre-registration is required. Bring sack lunch.

18 – Soap Making Workshop

Instructor: Norma Nusz Chandler
12:00 noon – 4:00 pm
\$40 members / \$48 non-members

Back by popular demand is this incredible soap making workshop with Norma Nusz Chandler. Participants will be able to make soap from scratch and learn techniques to do this at home. The

class will be outdoors. Pre-registration is required.

24 – Family Day – Traditional Textiles

11:00 am – 3:00 pm
Museum Gallery
Free and open to the Public

Join in the celebration of traditional textiles of South Dakota. Families will have the chance to see artists at work. The family day will include demonstrations, food, and beverages.

24 – Knitting Basics: Part Two

Instructor: Joan Janes
Multipurpose Room
9:00 am – 12:00 pm
\$30 members / \$36 non-members

Once again, certified knitting instructor Joan Janes will teach the ins-and-outs of knitting. This class is a follow up to Basic Knitting: Part One. Students will quickly review knit and purl stitches, learn four cast-on methods, increases, decreases, slip stitches, how to fix common errors, and how to work a garter stitch, stocking stitch, seed stitch, and ribbing. Pre-registration is required.

24 – Knitting Workshop: Felted Bag

Instructor: Joan Janes
Multipurpose Room
1:00 – 4:00 pm
\$30 members / \$36 non-members
Prerequisite: able to cast-on and knit or Knitting Basics: Part One class.

Public Programs



Joan Janes will host another exciting knitting workshop. Learn the skills needed to make a felted bag: garter stitch, picking up and knitting stitches, knitting in the round on a circular needle, changing color, knitting I-cord, and felting (fulling) and drying techniques. Pre-registration is required.

October

6 – Lecture: Song to the Great Spirit

Lecturer Vic Runnels

Auditorium

7:00 pm

Free and open to the public

Vic Runnels, an Oglala Lakota Native American, will give a lecture titled "Song to the Great Spirit." Runnels will be speaking on several contemporary issues of the Lakota culture. In particular, he will present his vision towards one of South Dakota's newest architectural creations. "Song to the Great Spirit" is located in Sisseton, South Dakota, at the Sisseton-Wahpeton College. The building was designed by Runnels and Encompass Architects, Lincoln, Nebraska. Runnels will also discuss his part in the new phase of construction at the college. Questions and answers will follow the lecture. The presentation is free and open to the public.

8 – Stained Glass Workshop

Instructors, Jerry and Judy De Wald

Multipurpose Room

10:00 – 4:30 pm

\$80 members / \$96 nonmembers

Stained glass artists Jerry and Judy De Wald will host this fabulous workshop on the art of making stained glass. Participants will make a contemporary style piece of stained glass to take home. This class is for both beginners and those who have experience with stained glass. Materials are included with the fee. Bring a bag lunch. Pre-registration is required.

15 – Silk Workshop: Wrap It, Bind It, Scrunch It & Dye It.....

Instructor Ann Taecker

Multipurpose Room

10:00 am – 4:00 pm

\$50 members / \$60 nonmembers (All materials included)

Come to the Art Museum on October 15th ready to wrap, bind, scrunch and dye and you will go home with a fabulous Shibori'd silk scarf. Shibori is an ancient Japanese fiber art of bound-resist dyeing on fabric. By using techniques of stitching, binding, fold-and-clamp, and pole-wrapping, shibori produces one-of-a-kind patterns on cloth. Bring a bag lunch. Pre-registration is required.

20 – Great Legacies

Lecture – V.J. Smith and Amy Dunkle

Auditorium

7:00 – 9:00 pm

Free and open to the public

Join authors Amy Dunkle and V.J. Smith as they speak about some of Harvey Dunn's models. In association with the Harvey Dunn Portraits exhibit, Dunkle and Smith will go into detail about some of SDSU's most notable figures, including Ada Caldwell, George Brown, Hurbert Mathews, and James Shepard. A reception will follow in the Dunn Gallery.

22 – Portrait Painting Workshop

Artist Fatih Benzer

Multipurpose Room

10:00–4:00 pm

\$35 members / \$42 nonmembers

Join professional artist and Visual Arts Professor Fatih Benzer, as he teaches students how to paint portraits using acrylics. This class is for beginners and those with experience. A live model and all materials will be provided. Bring a lunch. Pre-registration is required.

30 – Reception – Midwest World Fest

6:00–8:00 pm

Join us as we welcome ShegoBand from Somalia. ShegoBand is an energetic and versatile ensemble led by Shego Said. It

is rooted in the traditional sounds and rhythms of Somali culture, but equally comfortable with the more contemporary Somali sound the ensemble has worked to create in the last ten years. This reception is to welcome ShegoBand to South Dakota. The reception is free to the public.

November

3 – After Lewis and Clark

Lecture: Frank Pommersheim

7:00 pm

Auditorium

Free and open to the public

Join us as we welcome keynote speaker Professor Frank Pommersheim. Mr. Pommersheim will discuss contemporary political and social issues with Native Americans in relation to the exhibition Native American Art – After Lewis and Clark.

Pommersheim teaches at the University of South Dakota School of Law, where he specializes in Indian law. Prior to joining the faculty in 1984, he lived and worked on the Rosebud Sioux Reservation for ten years. He currently serves on a number of tribal appellate courts throughout Indian country, including Chief Justice for the Cheyenne River Sioux Tribal Court of Appeals and Associate Justice for the Mississippi Band of Choctaw Supreme Court.

4 – Public performance - ShegoBand

Performing Arts Center (PAC)

8:00 pm

\$8 adults / \$3 child / SDSU

students free

Information, call 688-4279

18 – Artist Reception

South Dakota Artist Series:

George Prisbe and Richard Edie

4:30 – 7:00 pm

Gallery talk at 5:30pm

Free and open to the public

Volunteer Spotlight

Phyllis Bartling has been a member of the Volunteer Guild since it first began in 1971. She is one of four volunteers still serving on the guild out of the 85 original charter members. She first became a guild member because "everyone was just so excited about having a museum here, and it was a great opportunity to serve the community and learn more about art."

Originally from Parkston, Phyllis graduated from Yankton College and worked as Secretary to the Superintendent in the Department of Public Instruction in Pierre until she married Lawrence Bartling in 1940. Phyllis and her family have lived in Brookings since 1944, just before her husband served overseas in WWII.

Phyllis was President of the Volunteer Guild in 1977 and 1978 and has held several other Guild offices. Her invaluable volunteer work at the Museum has included giving guided tours of the exhibitions, being an Art-in-the-Schools presenter, and welcoming visitors to the Museum at the reception desk. Phyllis says what she enjoys most about her time at the Museum is, "the opportunity to meet the visitors that come to the Museum, especially during the summer." Over the years, Phyllis said she would keep track of all the foreign visitors. She would always find it surprising how many came to the Museum and also where they were visiting from.

"I feel like I have gained more from my experiences with the Museum than I have contributed." She said, "I'm just glad to be involved with such a great Museum and I believe it is important not only to the Brookings community, but also to the state."

We at the Museum would like to thank Phyllis for all that she has done. Her service and dedication are greatly appreciated, and we look forward to many more years of her support.



Phyllis Bartling

Board Member Spotlight

Sharon Casey has been on the Museum's Board for several years. She first became a member because of her love for the South Dakota Art Museum. Her services and contributions have been enormous, bringing fresh perspectives and ideas to the Museum. "I came on the board not knowing much about the Museum, and in my time as a board member, I have learned a great deal and have enjoyed it very much," she said.

Originally from Madison, South Dakota, Sharon attended SDSU from 1960 to 1961. She then married her husband, Terry Casey, and moved to Chamberlain, where she remains today.

Sharon says what she enjoys most about being a Board member is the wonderful art and seeing the new displays. She also feels that the Museum Gift Store has developed a great deal over the past years in providing a great mixture of products.

"Being a Board member has been a very educational experience." She said, "I think the Museum (staff) is doing an excellent job of changing the exhibits."

The Museum staff would like to thank Sharon for her dedication to the Board and for all that she has contributed.



Sharon Casey

Intern Spotlight

The South Dakota Art Museum was fortunate to have Clare Bellis as this year's summer intern. Clare, who just finished her second year of studies at Manchester Metropolitan University in Manchester England, is a history of art and design major.

Clare said she chose this opportunity because, "I've been thinking of becoming a curator, and if I enjoy my time here at the Museum, then I'll know that's what I'll want to do."

She says that she has enjoyed working at the Museum, finding the staff very friendly and easy to work with.

When asked about Brookings, she said that it is similar to her home of East Yorkshire, England, but things are, "a lot quieter and much smaller" than back home.

For fun, Clare enjoys spending time with her friends and boyfriend, going to the cinema, and swimming. She also enjoys playing the piano, a hobby which she has been practicing for over eight years.

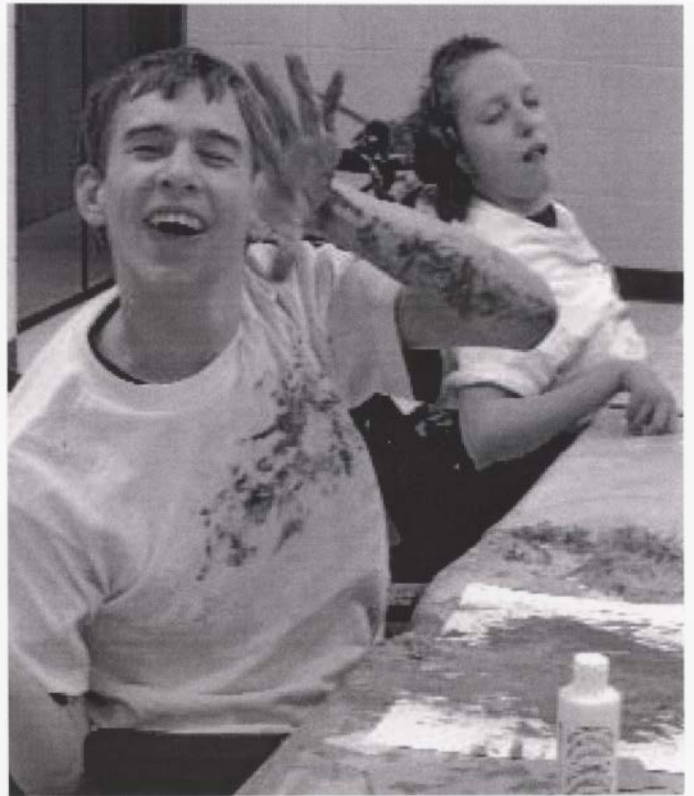


Clare Bellis

Growth Thru Art

Each spring and fall, the SDAM's multipurpose room is filled with talented individuals. SDAM Director Lynn Verschoor started Growth Thru Art five years ago. She says that each time she sees her students, they improve and push their individual creativity beyond her wildest dreams.

Growth Thru Art is a unique program offering participants with developmental disabilities the opportunity for creative expression. The program is based on the belief that every person is born with the power to create. Oftentimes, this capacity may be dormant because of disabilities. This project is dedicated to providing an enabling environment for participants to create and express themselves through visual art.



Growth Thru Art, Marcus Bohn and Amy Knight

SDSU Success Academy

Thanks to a partnership between South Dakota State University and the Flandreau Indian School (FIS), Native American high school students may see higher education as a possibility for their future. Conducted by SDSU professors and students from the University's colleges, the workshops expose FIS students to careers in engineering, nursing, journalism, visual arts, sociology, economics, food sciences, and agriculture. The project's primary goal is to encourage FIS students to attend college. A secondary goal is to cultivate in the FIS students a feeling of familiarity with college campuses and a sense of the everyday schedules and challenges of college students. The South Dakota Art Museum hosts workshops and Museum tours for the sophomore class, and is pleased to be part of this extraordinary experience.



SDSU Success Academy students view a soap stone carving from Alaska (Inuit)

Midwest World Fest

Midwest World Fest, a program of Arts Midwest, is a global arts, education, and outreach performing arts program designed to provide inspiring arts enrichment while it instills appreciation for diversity and encourages acceptance of others and their cultures.

In a two-year cycle beginning in the Fall of 2005, four ensembles representing four unique cultures from within and beyond the United States will tour selected communities in all nine Arts Midwest states. The South Dakota Art Museum is pleased to be one of the nine host sites. Participating ensembles will be ShegoBand, representing traditional music from Somalia, Bamboo Orchestra of Japan, a multi-ethnic Israeli ensemble Esta, and Chuchumbe from southern Veracruz, Mexico.

Each ensemble will conduct week-long residencies consisting of public and school performances, K-12 school workshops that will focus on musicality, the creation of instruments, and dialogues between students and artists about culture. Outreach activities will also be provided, including community workshops, master classes with local students, and a community reception.

The first ensemble to be hosted by the South Dakota Art Museum will be ShegoBand. Led by Shego Said, this energetic and versatile ensemble is rooted in the traditional sounds and rhythms of Somali culture. They have toured world wide, including Canada, England, and Scandinavia. ShegoBand will feature Hibo Nuur and Kooshin, two outstanding traditional artists.

The ShegoBand's week long residency will be in Brookings from October 30 to November 5, 2005. The Museum will host a reception from 6-8 p.m. on October 30. They will present a series of workshops in the Brookings elementary schools Monday, Oct. 30 to Wednesday, Nov. 2, 2005. On Thursday, Nov. 4, ShegoBand will be working with various departments on campus. A public performance will be held on Friday, Nov. 4 in the Performing Arts Center at 8 pm. Tickets will be on sale at the SDAM and will cost \$8.00 for adults and \$3.00 for ages 18 and younger. Free for SDSU students.

Midwest World Fest is made possible with major support from the National Endowment for the Arts and the 3M Foundation. Additional support is generously provided by Amstore Corporation, Hanon McKendry, Verizon, the Consulate General of Israel to the Midwest in concert with the Ministry for Foreign Affairs of Israel, the Muskegon Chronicle, WKK Fund of Dorothy A. Johnson, Muskegon Jewish Community, and the Muskegon Rotary Club. Midwest World Fest is a program of Arts Midwest with support from its nine member state arts agencies.



ShegoBand from Somalia



Esta from Israel



Chuchumbe from Mexico



Bamboo Orchestra from Japan



Museum Store



The South Dakota Art Museum Store offers an array of unique, beautifully crafted products from regional artists. The Store has one of the area's largest regional book selections as well as music from regional musicians. Among our unique products are pottery, jewelry, and accessories. Our international section has expanded and now includes original products from Africa, Tibet, Korea, and China.

The Museum Store has some exciting upcoming Promotions and Events!

Events:

Member's Holiday Sale (TBA)

Promotions:

10% discount for Members/SDSU students
New Harvey Dunn giclee (TBA)

Toll Free Number

1-866-805-7509

Coming Soon....

The Museum Store will be on-line at
www.southdakotaartmuseum.com

South Dakota Art Museum Membership Application/Renewal

Our members are vital to the continued development of the South Dakota Art Museum and, in turn, the Art Museum makes our members' lives much richer through the arts.

Basic Membership Benefits (Renewed Annually)

- 10% discount on Museum Store purchases.
- 20% discount on Museum classes and workshops.
- Subscription to the *South Dakota Art Museum News* and other Museum mailings.
- Recognition in the annual membership issue of the *News*.

Contributing Membership Benefits

In addition to your dues, your contribution to the Museum will help to purchase works of art and aid in Museum operations and programming. These contributions also fund publications, scholarly research on collections, conservation of art works, and their restoration. Contributing members receive all of the basic membership benefits plus the special benefits listed below.

Contributor (\$100 and above)

- Family membership for two adults and their children through age eighteen.
- Basic membership benefits.

Donor (\$500 and above)

- All benefits above, plus one free gift membership to a friend.

Supporter (\$1000 and above)

- All benefits above, plus one additional free gift membership to a friend.

Sustainer (\$5000 and above)

- All benefits above, plus receive recognition as a sponsor or co-sponsor of a SDAM exhibition or program selected in collaboration with the director.

Benefactor (\$10,000 and above)

- All benefits above, plus receive recognition as a sponsor or co-sponsor of two SDAM exhibitions or programs selected in collaboration with the director.

To join, simply fill out the attached form and mail it to the South Dakota Art Museum with your check or credit card information. Call the Museum Office at (605) 688-5423 if you have questions regarding membership or wish to pursue other ways of giving.

Volunteer opportunities are available.

Call (605) 688-5423 for more information.

Different ways of "giving" to the South Dakota Art Museum.

Virginia and Dario Enriquez of Minnesota purchased a weaving from South Dakota Artist Grete Bodogaard, titled *Missouri River Morel, 1999*. The piece was donated in memory of longtime Guild member and supporter Mildred Gastler. This was an in-kind gift to the Art Museum and fits in with our acquisition requirements. This generous gift is one of many ways people can make contributions to the Art Museum.

THE SOUTH DAKOTA *Art* MUSEUM NEEDS **You**

Full Name(s) _____

Address _____

City _____ State _____ Zip _____

Telephone (____) _____

E-mail _____

Basic Memberships

SDSU Student	FREE
Individual	\$30.00
Family	\$40.00

(Up to two adults in one household and their children through age eighteen.)

Contributing Memberships

All contributing memberships are for up to two adults in one household and their children through the age of eighteen. Discounts are available for all persons listed on the membership.

Contributor	\$100-499
Donor	\$500-999
Supporter	\$1,000-4,999
Sustainer	\$5,000-9,999
Benefactor	\$10,000 and above

☐ Check enclosed

☐ Charge, I wish to use

Mastercard/Visa # _____

Expiration Date _____

Signature _____

TOTAL MEMBERSHIP \$ _____

Your entire membership is tax deductible to the full extent of the law.

Membership

South Dakota Art Museum
Box 2250, South Dakota State University
Brookings, SD 57007

Thank You

CURRENT MUSEUM MEMBERSHIPS

May 31, 2004- June 1, 2005

We appreciate the contributions of all our members and donors. Please contact us if you notice that your information is incorrect. Thank you.

Benefactor

Maree Larson, Brookings, SD

Sustainer

Phyllis & Robert Bell, De Smet, SD
Vern & Marilyn Brose, Selinsgrove, PA
Tim Dougherty, Sioux Falls, SD
Friends of the Arts, Brookings, SD
Rita & Bill Larson, Fowler, CO
Sue & Curt Wischmeier, Aberdeen, SD

Supporter

Lynn & Diane Anderson, Sioux Falls, SD
Ruth Brennan, Rapid City, SD
Horace Fishback, Davidson, NC
Virginia Harrington, Sioux Falls, SD
George & Roberta Lohr, Brookings, PA
John & Betty Soreng, Eugene, OR
Jack & Linda Stengel, Milbank, SD
Lynn Verschoor, Brookings, SD
West River Alumni, Rapid City, SD
Zeno Wicks III & Roxanne Savaryn-Wicks, Brookings, SD

Donor

Duane & Norma Benton, Powell, OH
Sharon & Terry Casey, Chamberlain, SD
Richard Cutler, Sioux Falls, SD
Merle Gunsalus, Brookings, SD
Matt & Joan Janes, Brookings, SD
Rolland & Paula Johnson, Monument, CO
Old Sanctuary/Mad Jacks restaurants
Pat & David Meyer, Brookings, SD
Mike & Pat Reger, Brookings, SD
Curt & Sue Wischmeier, Aberdeen, SD
Xcel Energy, Minneapolis, MN

Contributor

David & Sheryl Arlt, Aberdeen, SD
Avery Brothers, LLC, Sioux City, IA
Robert & Rebecca Baer, Brookings, SD
Marian Barnes, Reno, NV

Joye Ann Billow, Brookings, SD
Dorothy Brisco, Minneapolis, MN
Arnold & Doris Brown, Brookings, SD
Avalon Bymers, Brookings, SD
Community Bank, Avon, SD
Walt & Marjorie Conahan, Sioux Falls, SD

Koss & Teresa Delfinis, Brookings, SD
Max & Marilyn DeLong, St. Paul, MN
Claire & Margaret Denton, Brookings, SD
DM & E Railroad, Sioux Falls, SD
Jonnie Anne Einspahr, Brookings, SD
Beverly Erck, Redlands, CA
Lewayne & Nancy Erickson, Brookings, SD

Anne Fennell & Gary Yarrow, Brookings, SD
Gerald Frick, Fergus Falls, MN
Mary & Diana Froning, Brookings, SD
Laurie Fulton, Alexandria, VA
Frank & Carole Gailor, Raleigh, NC
Tim Gibson, Lake City, SD
David & Naomi Gilkerson, Brookings, SD

Mary Gill, Storm Lake, IA
Gary & Sally Gramm, Brookings, SD
Nels & DeAnna Granholm, Brookings, SD
Geoffrey & Sue Grant, Brookings, SD
Jean Heilman Grier, Washington, DC
Richard Gunsalus, Los Gatos, CA
M. Nadim & Seham Hassoun, Brookings, SD

Mildred Hedrick, Kalamazoo, MI
Steffen & Janet Helgaas, Sioux Falls, SD
Arlene Hendrickson, Brookings, SD
Richard & Joanie Holm, Brookings, SD
Stan & Dorothy Hortness, Sauk Centre, MN

Bernie Hunhoff, Yankton, SD
Esther Hunsaker, Port Orchard, WA
David & JoAnn Johnson, Amery, WI
Gordon Johnson, Los Angeles, CA
Al & Carole Johnson, Brookings, SD
Mark & Marcia Kozel, Sioux Falls, SD
Al & Irene Kurtenbach, Brookings, SD
Dale Lamphere, Sturgis, SD
Andre Larson, Vermillion, SD
Dave & Mary Leonard, Boulder, CO
RaVae Luckhart, Rapid City, SD
Bruce & Ila Lushbough, Brookings, SD
David & Linda Marquardt, Sioux Falls, SD

Alice Dunn Martin, W. Hartford, CT
Norm Martin, Brookings, SD
Tom & Judy Martin, Brookings, SD

Opal & Bill McDermott, Brookings, SD
Scott McMacken, Brookings, SD
Susan McWilliams, Mankato, MN
Brian & Lynn Darnall, Medary Acres, Brookings, SD
Lorraine Minier, San Diego, CA
James & Dorothy Morgan, Brookings, SD

Paula Nelson, Platteville, WI
Phyllis Nelson, Valparaiso, IN
Larry & Diane Ness, Yankton, SD
Ella Ollenburger, Brookings, SD
Elaine Olson, Brookings, SD
Gordon & JeriLynn Ommen, Brookings, SD

Katherine Peterson, Los Banos, CA
Prairie Graphics, Inc., Brookings, SD
Liz Rezek, Sioux Falls, SD
Donna Ritter, Brookings, SD
Kay & John Romans, Urbana, IL
Mike & Patti Roth, Parker, SD
Alfred & Deanna Rude, Brookings, SD
Stephanie Russo, Paris, KY
Duane & Phyllis Sander, Brookings, SD
Jerry & Gail Simmons, Sioux Falls, SD
Orville Stangl, Java, SD
Joseph & Signe Stuart, Santa Fe, NM
Rev. James & Gloria Thvedt, Brookings, SD

Craig & Della Tschetter, Brookings, SD
Kim Tyler, Hoffman Estates, IL
Sharon & Gary Van Riper, Brookings, SD
Calvin Vaudrey, Litchfield Park, AZ
VeraSun Energy Co., Brookings, SD
Phillip & Roberta Wagner, Brookings, SD
Doris Walker, Madison, SD
Merritt & Pamela Warren, Brookings, SD
Kenneth Way, Watertown, SD
Mason & Janie Wheeler, Brookings, SD
Louis & Elizabeth Williams, Brookings, SD
Curtis Wilske, Coralville, IA
Linda & Larry Youngren, Brookings, SD

Family

Rick & Pam Adler, Volga, SD
Bob & Joey Aldern, Sioux Falls, SD
Jon & Helen Lewis Aldridge, Schaumburg, IL
Patty Bacon, Volga, SD
Barbara & Harold Bailey, Brookings, SD
Keith & Glynn Bartels, Mitchell, SD
Tom & Kay Becker, Brookings, SD
Daniel & Kelly Beinhorn, Brookings, SD

Dennis & Darla Bielfeldt, Brookings, SD
Maxine Bergh, Mendota Heights, MN
Peter & Lisa Bergmann, Brookings, SD
Philip & Jacquelin Blackford, Brookings, SD
Allen Branum & Family, Brookings, SD
Steve & Lyndy Britzman, Brookings, SD
Steve & Jean Brockmueller, Sioux Falls, SD
Larry Browning, Brookings, SD
Jeff & Barbara Buettner, Sinai, SD
Robert & Donna Burns, Brookings, SD
Robert Butterbrodt, St. Paul, MN
Robert & Jeanette Carey, Rockport, TX
Gene & Margaret Chamberlin, Ames, IA
Richard & Marilyn Chapman, Centennial, CO
Gary & Rosemary Chappell, Custer, SD
Becky & Fernando Chavez, Oakland, CA
Craig & Diane Corson, Ames, IA
David & Patricia Dartt, Omaha, NE
Sherry & Tom DeBoer, Brookings, SD
Ray & Violet Dorn, Brookings, SD
Martin & Betsy Draper, Brookings, SD
Chandradhar & Prabha Dwivedi, Brookings, SD
Carl & Cleo Edeburn, Brookings, SD
Royce & Ruth Emerick, Brookings, SD
Glen & Estelle Felt, Brookings, SD
Woody & Betty Franklin, Brookings, SD
Mary & Jerry Freeman, Brandon, SD
Jack & Nancy Fuller, West Grove, PA
Norman Gambill, Brookings, SD
Jay & Bonnie Gilbertson, Brookings, SD
B.J. & Helen Gottsleben, Brookings, SD
Julie Canaday Graham, Columbus, NE
Patrick Griffin, Rochester, MN
Barbara Hartinger, Aurora, SD
Mary & Ken Haug, Brookings, SD
Tom Hayden, Plymouth, MN
Steve Will & Jane Hegland, Brookings, SD
Mary Kay & Steve Helling, Brookings, SD
Bernard & Elaine Hietbrink, Bella Vista, AR
Scott & Nancy Hodges, Brookings, SD
Ed & Joan Hogan, Brookings, SD
Carolyn Clague & Dennis Hopfinger, Brookings, SD
Jon & Charlene Hovland, Brookings, SD
Mildred & Ernest Huggins, Brookings, SD
Gordon Jackson & Anne Boley, Madison, WI
Alan & Carole Johnson, Brookings, SD

Bob & Phyllis Karolevitz, Mission Hill, SD
 Dan & Michele Kemp, Brookings, SD
 Dee & Clyde Kirkbride, Brookings, SD
 Bill & Suzan-Oda Knese, Watertown, SD
 LaVerne & Loretta Kortan, Brookings, SD
 Cliff & Jeri Kurtz, Brookings, SD
 Jay & Kathy Larsen, Brookings, SD
 Lanniko Lee, Java, SD
 Dick & MaryJo Lee, Brookings, SD
 Richard Little & Tonya Haigh, Bruce, SD
 Michael Lundeen & Gail Hollarbush, Lincoln, NE
 Beth & Michael MacDonald, Sioux Falls, SD
 Madison High School, Madison, SD
 Carl & Aileen Madsen, Brookings, SD
 Steve & Judy Marquardt, Brookings, SD
 Don & Nancy Marshall, Brookings, SD
 Sonja Matison, Chevey, WA
 Richard & Carolyn Merhib, Sherburne, NY
 Paul & Doris Moriarty, Brookings, SD
 Steve & Kaye Myers, Brookings, SD
 Stanley & Barbara Nelson, Harris, MN
 Terry Nemitz, Brookings, SD
 Michael Nielsen, Minneapolis, MN
 Hamilton, C. Bruce Notlimah, Associates, Omaha, NE
 Ivan Palmer & Susan Hardin Palmer, Brookings, SD
 Jim & Marilyn Pedersen, Brookings, SD
 Glen & Lottie Petersen, Tyler, MN
 Larry & Cathy Piersol, Sioux Falls, SD
 Phillip & Darlene Plumart, Brookings, SD
 Fred & Ardyne Rittershaus, Brookings, SD
 Ryan & Charlene Rohl, Eagle, NE
 Robert & Madeleine Rose, Brookings, SD
 Greg & Kathy Satter, Sioux Falls, SD
 Madeline & Daniel Schaal, Brookings, SD
 Col. James Schnitzer, Tucson, AZ
 Robert & Kathleen Smith, Mitchell, SD
 Elizabeth Soladay, Faulkton, SD
 Sharon Struble, Milwaukee, WI
 John & Lynette Taylor, Brookings, SD
 Ron & Jan Tesch, Brookings, SD
 Carl & Silva Trautman, Brookings, SD
 Curtis Twedt, Lincoln, NE
 Evert Van Der Sluis, Brookings, SD
 Ginger Thomson & Jay Vanduch, Brookings, SD
 William & Nancy Wadsworth, Brookings, SD
 Rick & LaRayne Wahlstrom, Brookings, SD
 Gregg & Candice Wilson, Colfax, WI
 Richard & Donna Wilson, Brookings, SD
 Michael & Carol Wilson, Fountain Hills, AZ

Jason & Krysten Zimmerman, Brookings, SD

Individual

Loy Allen, Hermosa, SD
 Myla & Vincent Alsaker, Fargo, ND
 William Anderson, Lapeer, WI
 Evelyn Anderson, Sioux Falls, SD
 Thomas Bartholow, Brookings, SD
 Donald Bell, Sacramento, CA
 Blair T. Birmelin, Leonia, NJ
 Mary Bjerke, Volga, SD
 Grete Bodogaard, Volin, SD
 Michelle Bouchard, Brookings, SD
 Delores Brage, Brookings, SD
 Nancy Buckmaster, Brookings, SD
 Viola Callesen, Estelline, SD
 Steve Clarin, Brookings, SD
 Irene Cordts, Faulkton, SD
 Beverly Craddock, Brookings, SD
 Sherry Danielsen, Brookings, SD
 Kathleen Danker, Brookings, SD
 Maxine Damall, Brookings, SD
 Robert Davis, Brookings, SD
 Nathalie DeHaan, Brookings, SD
 Thelma Dittman, Brookings, SD
 Darlene Duffy, Oldham, SD
 Janice Ebersdorfer, Mitchell, SD
 Ruth Eilers, Huron, SD
 Audrey Estebo, St. Paul, MN
 Dan Faas, St. Paul, MN
 Lucy Forman, Brookings, SD
 Faye Frerichs, Wilmot, SD
 Bette Gerberding, Brookings, SD
 Mayla Ghazi, Brookings, SD
 Sandra Gorder, Fargo, ND
 Mary Louise Gorman, Louisville, KY
 Lynne Grabowska, Brookings, SD
 Richard & Deb Green, Pleasanton, CA
 Rachael Groethe, Brookings, SD
 Robert Gunsalus, Los Angeles, CA
 Karen Hageman-Snow, Brookings, SD
 Hendricks Comm. Hospital, Hendricks, MN
 Julie Hildebrand, Haworth, NJ
 Valerie Hladky, Pearl River, NY
 Kay Cee Hodson, Pierre, SD
 Linda Hoffelt, Brookings, SD
 Jill Hungerford, Brookings, SD
 Mary Husman, Brookings, SD
 Gladys C. Jackson, Bison, SD
 Steven Jacobs, Mason City, IA
 Ronald Jarrett, Britton, SD
 Ardell Johnson, Watertown, SD
 Jean Jostad, Brookings, SD
 Karen Kinder, Brookings, SD
 Wynona Klukas, Huron, SD
 Margaret Knowles, Fridley, MN
 Delores Koepsell, Brookings, SD
 Roxanne Kukuk, Watertown, SD
 Donna Lanphere, Santa Fe, NM
 Orpha Leibel, Brookings, SD
 Bonnie Lievan, St. Paul, MN
 Charles Lingren, Brookings, SD
 Norma Linn, Brookings, SD
 Richard Luther, Brookings, SD

Doug Malo, Brookings, SD
 Janice Marble, Brookline, NH
 Dexter D. Martin, Brookings, SD
 Darlene Martin, Greensboro, NC
 Charlotte Mickelson, Branson, MO
 Nancy Neiber, Brookings, SD
 Jeff Nelson, Sioux Falls, SD
 Janet Odden, Bartlesville, OK
 H. Lynette Olson, Brookings, SD
 Karen Olson, Salem, OR
 Bette Osman, Spring, TX
 Dolores Ostroot, Brookings, SD
 Eileen Pates, Brookings, SD
 Carol J. Peterson, Brookings, SD
 Diane Pettinger, Watsonville, CA
 Brian Price, Brookings, SD
 Katherine Olson Primitive Papers, Moorhead, MN
 Florence Pyle, Lewisburg, PA
 Gary Rassel, Charlotte, NC
 Ardelle Lundeen Roberts, Brookings, SD
 Ruth Royer, Brookings, SD
 Marian Rude, Brookings, SD
 Sarah Sang, Houston, TX
 Susan Schleicher, Brookings, SD
 Ruth Ann Schlobohm, Columbus, NE
 Ruby E. Schulz, Brookings, SD
 Lisa Shoemaker, Colman, SD
 Sandra Skovlund, Minneapolis, MN
 Ida Slocum, Aurora, SD
 Howard Smith, Brookings, SD
 Janice Smith, Columbia Heights, MN
 C.H. & Kay Snider, Twin Falls, ID
 Anella & Clayton Southwick, Rapid City, SD
 Mel Spinar, Sioux Falls, SD
 Verna Sturdevant, Brookings, SD
 Adele Sudlow, Brookings, SD
 Mary Sword, Brookings, SD
 Joan Tabor, Brookings, SD
 Larry Taylor, Brookings, SD
 Marie Tesch, Rapid City, SD
 Beth Thibodeau, Roseville, MN
 Shirley Thorson, Brookings, SD
 Mary Tritle, Brookings, SD
 Sharon Van Schoiack, Denver, CO
 JoLynn Vaughn, Brookings, SD
 William Verschoor, Huron, SD
 Jerry & Michele Visser, Brookings, SD
 Stan Wahl, Pierre, SD
 Ginny Weeks, Brookings, SD
 Keith E. Wells, LaGrange, GA
 William Wells, Warrenton, VA
 Myrna H. Williamson, Alexandria, VA
 Anne Withrow, Brookings, SD
 Elsa Wood, Brookings, SD
 Diana Zwieg, Brookings, SD

In-Kind Donors

Zeno Wicks III & Roxanne Savaryn-Wicks, Brookings, SD
 Warren Rosser, Kansas City, MO

Harvey Dunn Conservation

Diane & Lynn Anderson, Sioux Falls, SD
 Robert & Janice Arthur, Amarillo, TX
 Phyllis & Robert Bell, De Smet, SD
 Ruth Brennan, Rapid City, SD
 Vernon & Marilyn Brose, Selinsgrove, PA
 Paula Carney, Wauwatosa, WI
 Tim Dougherty, Sioux Falls, SD
 Bob & Pat Fishback, Brookings, SD
 Horace Fishback, Davidson, NC
 John Hanson, Cary, NC
 Donald & Ann Pier, Milwaukee, WI
 Maree Larson, Brookings, SD
 Robert Nagle, Piedmont, CA
 Kenneth Nelson, Rapid City, SD
 Darlene Olson, Ortle, SD
 Donald & Ann Pier, Milwaukee, WI
 Ann Platt, Sioux Falls, SD
 Linda Pranitch, Milwaukee, WI
 Dianne Schuchard, Flandreau, SD
 Robert & Sharon Struble, Milwaukee, WI
 Lynn Verschoor, Brookings, SD
 Daniel & Annette Wanwig, Gig Harbor, WA
 West River Alumni, Rapid City, SD
 Sue & Curt Wischmeier, Aberdeen, SD
 Helen Yetter, Duluth, MN

Doris Dolan

Memorial Donors

Arthur & Signe Anderson, Brookings, SD
 Carole Boling, Tempe, AZ
 Marcia Coates, Ft. Washington, MD
 Vitalis & Rachel Cole, Brookings, SD
 Denise Croft, Encinitas, CA
 Arthur & Kelly Draper, Tempe, AZ
 Patricia Esslinger, Chevy Chase, MD
 Jerome & Mary Fiedler, Brookings, SD
 Robert & Pat Fishback, Brookings, SD
 Mary Fleming, Flandreau, SD
 Rochelle Granat, Silver Spring, MD
 Sandra Heaton, Arlington, VA
 Lynn Heirakuji, Burtonsville, MD
 Margaret Higgins, Falls Church, VA
 Kathleen Keefe, Littleton, CO
 John & MaryAnn Korona, Alexandria, VA
 Richard & Karen Leibach, Alexandria, VA
 Margaret Lytle, Brookings, SD
 Roena Markley, Fairfax, VA
 Robert & Susan McCannell, Burke, VA
 John & Susan Roehmer, Oakton, VA
 Don & Rose Rost, Brookings, SD
 Charles & Barbara Sherupski, Round Hill, VA
 Robert & Margaret Stewart, Brookings, SD

Donor Spotlight, Zeno Wicks

The South Dakota Art Museum would like to take this opportunity to recognize one of its most conscientious donors, Mr. Zeno Wicks III. Zeno is a Professor of Plant Science at South Dakota State University. His contributions towards the Art Museum have been enormous. From his support at artist receptions to ideas for community outreach, his time and energy are invaluable.



Zeno Wicks with students from Northern Ghana Catholic School

In the last two years, Zeno has organized a trip to Southern Africa for students from SDSU. The eighteen-day expedition meandered through four countries—Ghana, Benin, Togo, and Burkina Faso. After returning from each trip, Zeno has brought back a wealth of international merchandise for the Museum Store, including jewelry, African beads, wood carved miniature animals, leather boxes, baskets, decorative wall hangings, colorful pillow covers, and a variety of textiles. "These items only add to the diversity of the Museum Store," says Zeno.

This in-kind donation, worth thousands of dollars, is one way of giving to the Museum. We would like to thank Zeno for his contributions towards the Museum and especially for his generous gift to the Museum Store.



support is provided with funds from the State of South Dakota, through the Department of Tourism and State Development, and the National Endowment for the Arts.

BOARD OF TRUSTEES

Ruth Brennan, Rapid City, President
Sharon Casey, Chamberlain, Vice President
Jack Stengel, Milbank, Treasurer
Maree Larson, Brookings, Secretary
Diane Anderson, Sioux Falls
Phyllis Bell, DeSmet
Marilyn DeLong, St. Paul, MN
Tim Dougherty, Sioux Falls
Christine Hamilton, Kimball
Rolland Johnson, Monument, CO
Jerry Jorgensen, Brookings
Rita Larson, Fowler, CO
Lanniko Lee, Java
RaVae Luckhart, Rapid City
Pat Meyer, Brookings
Peggy Gordon Miller, Brookings
Larry Ness, Yankton
Susan Wischmeier, Aberdeen

GUILD DIRECTORS

Donna Ritter, President
Harriet Swedlund, Vice President
Pam Warren, Secretary
Sharon Van Riper, Treasurer
Naomi Gilkerson, Historian
Dee Kirkbride, Member at Large

STAFF

Lynn Verschoor, Director
David Merhib, Curator of Education
Lisa Scholten, Curator of Collections
John Rychtarik, Curator of Exhibitions
Pam Adler, Museum Store Manager/
Program Assistant
Shayla Waugh, Assistant Editor

This newsletter is sponsored by: M.A. and Karen Lund, Brookings Friends of the Arts and the South Dakota Arts Council with funds from the State of South Dakota, through the Department of Tourism and State Development, and the National Endowment for the Arts.

Directions: 1½ miles west from Interstate 29 off exit 132 on Hwy 14, turn right on Medary Avenue, 4 blocks to Harvey Dunn Street. Museum is on the right.

4,500 copies of this document were printed by the South Dakota Art Museum at a cost of \$0.00 each. MA-001 7/05

South Dakota State University

SOUTH DAKOTA Art MUSEUM

Medary Avenue at Harvey Dunn Street
Box 2250, SDSU
Brookings, South Dakota 57007-0899
(605) 688-5423
Toll Free 1-866-805-5709
E-mail: sdsu_sdam@sdstate.edu
Web: sdartmuseum.sdstate.edu

CHANGE SERVICE REQUESTED

NON-PROFIT
US POSTAGE PAID
BROOKINGS SD
PERMIT 24

Free public hours are:
Monday– Friday 10:00 a.m. – 5:00 p.m.
Saturday 10:00 a.m. – 4:00 p.m.
Sunday and holidays 12:00 p.m. – 4:00 p.m.
(Closed on State holidays – please call ahead)
Parking available on Medary Avenue.