

South Dakota State University  
**Open PRAIRIE: Open Public Research Access Institutional  
Repository and Information Exchange**

---

Extension Circulars

SDSU Extension

---

1-1922

## Kimono Dress

A. Linfield

Follow this and additional works at: [http://openprairie.sdstate.edu/extension\\_circ](http://openprairie.sdstate.edu/extension_circ)



Part of the [Agriculture Commons](#)

---

### Recommended Citation

Linfield, A., "Kimono Dress" (1922). *Extension Circulars*. Paper 55.  
[http://openprairie.sdstate.edu/extension\\_circ/55](http://openprairie.sdstate.edu/extension_circ/55)

This Circular is brought to you for free and open access by the SDSU Extension at Open PRAIRIE: Open Public Research Access Institutional Repository and Information Exchange. It has been accepted for inclusion in Extension Circulars by an authorized administrator of Open PRAIRIE: Open Public Research Access Institutional Repository and Information Exchange. For more information, please contact [michael.biondo@sdstate.edu](mailto:michael.biondo@sdstate.edu).

## KIMONO DRESS

by

Azalea Linfield,  
Extension Specialist in Clothing.

### Material:

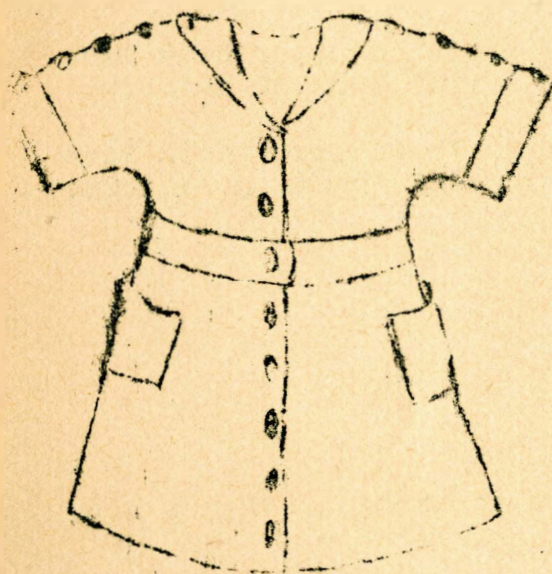
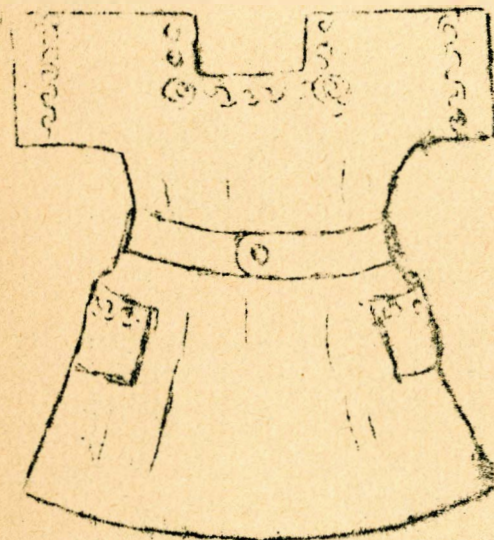
Calico, percale, gingham, kindergarten cloth and chambray.

### Amount:

Twice the length from the shoulder to the bottom of the skirt plus the desired hem. If the material is striped, extra will be needed for the belt; if not, it may be cut from pieces left from the under arm. For the extra large figure, side gores may be necessary and that will require the purchasing of an added length.

### Measurements:

- a. Length of dress - Measure from shoulder to floor. Subtract desired distance of skirt from floor, add 4 inches for hem.
- b. Length of sleeve - Measure from center neck over top of shoulder, down arm to desired length.
- c. Width of sleeve - Measure around upper arm.
- d. Depth of bust - Measure from hollow of shoulder to fullest part of bust.
- e. Bust - Carry measure around fullest part of bust.



### Draft for one-piece kimono dress--

Decide on length of garment desired and make allowances for hem. Fold the material in half crosswise, then fold over in half, lengthwise.

Note - This draft is made with a V shape neck line although any neck line may be used.

#### (A) Measurements--

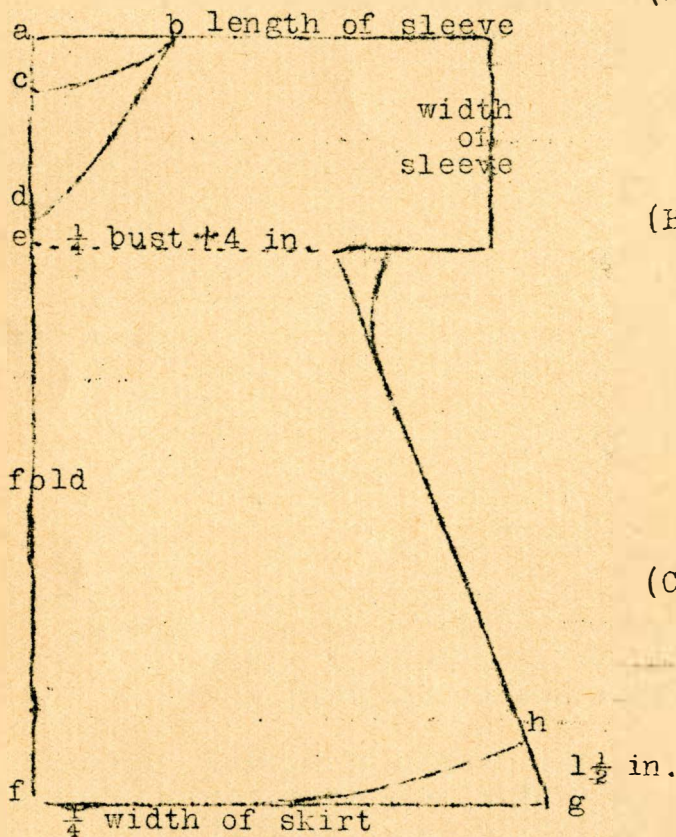
1. Bust
2. Length of sleeve
3. Width of sleeve
4. Length of garment.

#### (B) Markings--

1. a to b -- 3 inches
2. a to c -- 1 inch
3. a to d -- 5 inches
4. a to e -- distance from shoulder to bust, Depth of bust.
5. a to f -- length
6. h to g --  $1\frac{1}{2}$  inches.

#### (C) Tracing--

1. Trace upper neck line for back of pattern.
2. Trace lower neck line for front of pattern.



#### Note--

1. Curve the under arm. This is apt to tear if a sharp angle is left.
2. Curve the bottom of the skirt.
3. Neckline - Various neck lines may be used besides the one illustrated, square, round and diamond.



Directions for making:--

1. Under arm seams - Use french seams. Place the two wrong sides of the material together and baste  $\frac{1}{2}$  inch from the edge and stitch. Trim seams if necessary. Then turn, bringing two right sides together and baste  $\frac{1}{3}$  inch from edge, stitch.

2. Neck and sleeve finishing - Bias tape, rick-rack, contrasting material used as a piping or facing may be used. Collar and cuffs of some contrasting color, or of organdy are suitable finishings. If a plain hem is used at neck and sleeve, a simple decorative stitch gives it a more finished appearance.

3. Fitting - Often to make a kimona dress hang properly so that it will not project in front, it is necessary to take a small dart or tuck at the waist line on either side above the hips. This will draw the fullness from the front. The tuck or dart is easily hidden by the belt.

4. Belt - Cut a strip of material 6 inches wide and long enough to go around the individual and allow for plenty of looseness and for the lap. Fold through center, lengthwise with the two right sides together. Sew down one side and end. Turn right side out. Turn in open end and slip stitch together. Buttons and button holes, snaps, or hooks and eyes may be used on the belt.

5. Belt straps - Have finished straps  $\frac{1}{2}$  inch wide and  $\frac{1}{2}$  inch longer than belt is wide. Sew at waist line along under arm seam.

6. Hem - Even the garment around the bottom. Turn up  $\frac{1}{3}$  inch and crease firmly, then put in second turn with marker. Make a marker from heavy paper one inch wide and as long as desired hem. The second turn should be measured accurately and basted carefully and close to the edge. (Put in any fullness by small pleats.) Stitch close to edge.

7. Pockets - Cut in any shape desired. At the top they may be finished as neck and sleeves. Before stitching to dress, try dress on model and place pockets correctly.