

South Dakota State University
**Open PRAIRIE: Open Public Research Access Institutional
Repository and Information Exchange**

South Dakota County Profiles: 2007

SDSU Census Data Center

9-27-2007

Walworth County

W. Trevor Brooks
South Dakota State University

Follow this and additional works at: https://openprairie.sdstate.edu/census_data_county-profiles

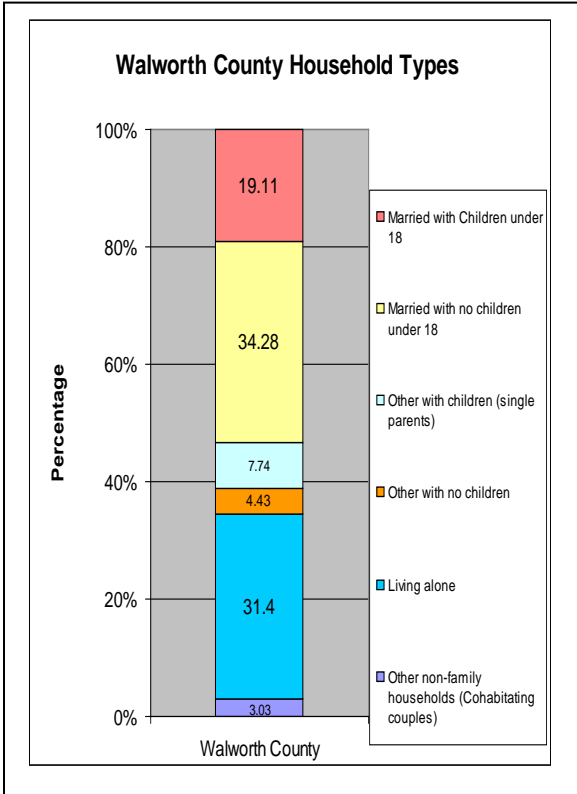
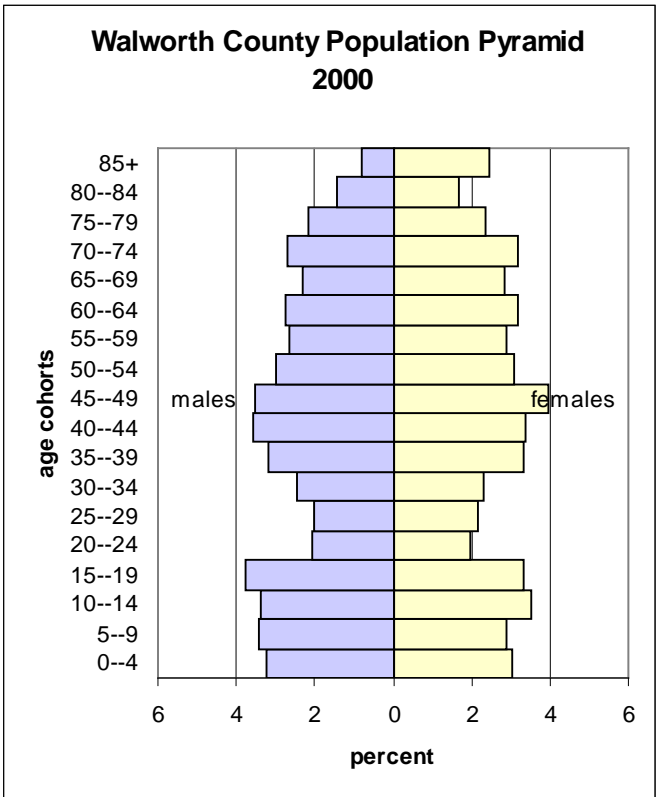
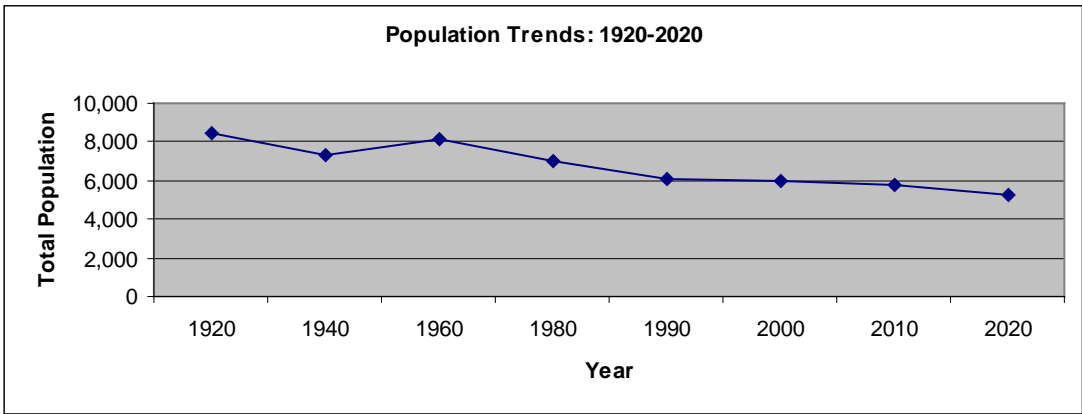
Recommended Citation

Brooks, W. Trevor, "Walworth County" (2007). *South Dakota County Profiles: 2007*. 64.
https://openprairie.sdstate.edu/census_data_county-profiles/64

This Other is brought to you for free and open access by the SDSU Census Data Center at Open PRAIRIE: Open Public Research Access Institutional Repository and Information Exchange. It has been accepted for inclusion in South Dakota County Profiles: 2007 by an authorized administrator of Open PRAIRIE: Open Public Research Access Institutional Repository and Information Exchange. For more information, please contact michael.biondo@sdstate.edu.

Walworth County Population Trends

1920	1940	1960	1980	1990	2000	2010	2020
8,447	7,274	8,097	7,011	6,087	5,974	5,743	5,304

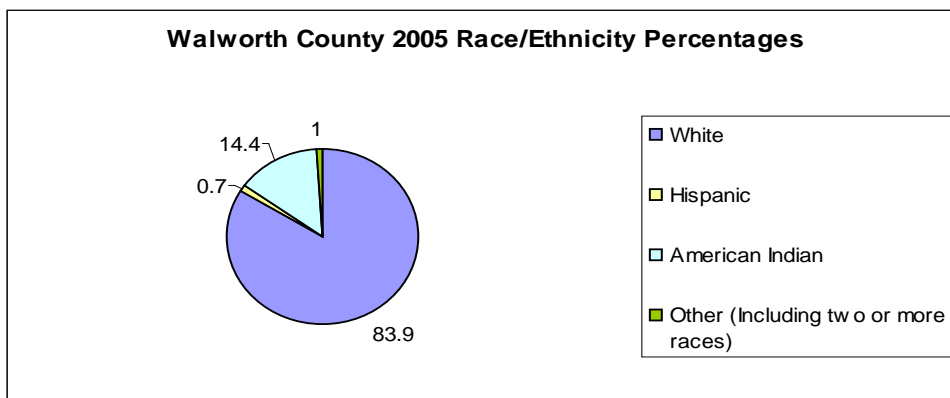


Where People Live in 2000 (by percent)				
	South Dakota	Walworth	Campbell	Edmunds
Urban	51.92	58.59	0	0
Rural-Farm	7.72	8.94	28.90	17.31
Rural-Non farm	40.36	32.47	71.10	82.69

Walworth County Population Highlights

- From 1990 to 2000, Walworth County **lost 113 residents**, which was a **1.9% decrease** in its total population.
- From 1990 to 2000, Walworth County **gained 87 residents to in-migration**, which was a **1.4% increase** in its total population.
- From 1990 to 2000, Walworth County had 200 more deaths than births.
- **24.01%** of Walworth County's residents are **under the age of 18**, while **9.44%** are **aged 65+**.
- Walworth County's **median age is 42.8**. This is older than both Campbell and Edmunds counties.
- Walworth County's **sex ratio is 94.21**, meaning there are about 94 males for every 100 females. This is lower than both Campbell and Edmunds counties.
- Walworth County's **fertility rate is 68.9** births for every 1,000 females aged 15-44. This is higher than both Campbell and Edmunds counties.

Race/Ethnicity in Walworth County



Walworth County Agriculture in 2002

- Walworth County had **299 farms**, which was an **11.8% decrease** from 1997.
- Walworth County's **average farm size was 1,187**. This is smaller than both Campbell and Edmunds counties.
- Walworth County's **average net farm income is \$29,126**. This is higher than Campbell, but lower than Edmunds.

Walworth County Economics in 2000

- Walworth County's **per capita income is \$15,492**. This is lower than Campbell, but higher than Edmunds.
- Walworth County's **median income is \$27,834**. This is lower than both Campbell and Edmunds counties.
- **15.8%** of Walworth County's residents **aged 25+ had completed a B.S. degree or higher**. This is higher than both Campbell and Edmunds counties.
- **18.25%** of Walworth County's residents are **living at or below the official poverty line**. This compares with 13.18% for the state of South Dakota, 14.09% for Campbell County, and 13.85% for Edmunds County.
- **34.44%** of Walworth County's **children under the age of 5** are **living at or below the official poverty line**, this compares with 19.77% for the state of South Dakota, 1.06% for Campbell County, and 52.04% for Edmunds County.
- **6.8%** of Walworth County's working aged residents **commute to another county to work**. This is lower than both Campbell and Edmunds counties.

Walworth County Employment by Industry

Top Industries (in terms of numbers)	Percentage	Number
Educational, health, and social services	21.67	572
Agriculture	14.05	371
Retail	11.06	292
Construction	7.54	199
Public Administration	5.45	144
Manufacturing	1.52	40
Total		2,640

Income Distribution

	South Dakota	Walworth	Campbell	Edmunds
Total:	290,336	2,505	718	1,659
Less than \$10,000	30,881	387	120	213
\$10,000 to \$14,999	22,421	205	77	163
\$15,000 to \$19,999	22,190	299	50	131
\$20,000 to \$24,999	24,633	219	71	122
\$25,000 to \$29,999	22,190	230	55	137
\$30,000 to \$34,999	21,694	197	46	150
\$35,000 to \$39,999	19,408	153	55	103
\$40,000 to \$44,999	19,077	133	53	124
\$45,000 to \$49,999	16,675	110	36	100
\$50,000 to \$59,999	27,809	194	59	129
\$60,000 to \$74,999	26,008	187	41	120
\$75,000 to \$99,999	20,150	108	36	94
\$100,000 to \$124,999	7,597	58	13	35
\$125,000 to \$149,999	3,493	5	3	17
\$150,000 to \$199,999	2,872	0	0	9
\$200,000 or more	3,238	20	3	12

Data compiled by:

W. Trevor Brooks
 Rural Life and Census Data Center
 South Dakota State University

Sources:

South Dakota Data Center (Vermillion, SD)
 South Dakota Labor Market
 U.S. Census of Agriculture (2002)
 U.S. Census Bureau (2000)