

South Dakota State University

## Open PRAIRIE: Open Public Research Access Institutional Repository and Information Exchange

---

South Dakota Art Museum Newsletters and Publications

---

Winter 2004

### South Dakota Art Museum Newsletter, Winter/Spring 2004

South Dakota State University

Follow this and additional works at: [https://openprairie.sdstate.edu/sdam\\_news](https://openprairie.sdstate.edu/sdam_news)

---

# Dale Lamphere

*The sweep of clouds  
across sky, the force  
of wind through  
grasses, and the  
corrosion of water  
over stone, rolling  
landforms within this  
envelope of  
atmosphere. . .*

*– Dale Lamphere*

Sculptor Dale Lamphere has transformed one of the South Dakota Art Museum's galleries into an assemblage of stainless steel, cast bronze, wood and stone. His sculptures come to life, revealing his creative process, thus provoking us to examine his work from every angle. A native of Wyoming now living in the Black Hills of South Dakota, Lamphere taught himself the art of sculpting. By challenging himself and being assertive in his artwork and his career, he developed his unique style of sculpting through which he has gained a reputation as one of the most prominent sculptors in South Dakota and the Midwest.

Throughout his illustrious career of over three decades, Lamphere has compiled over forty large-scale public works ranging from monumental landscapes to human forms to abstract pieces. His work blends land with human form, prairie with hills, spiritual with physical, and classical with abstract. In the past his enthusiasm had been portraiture; he has always enjoyed the human form and the human face. Says Lamphere, "The common thread in my sculpture is starting with the formal qualities: mass, light and shadow. I think in abstract terms first, before I add the narrative quality."

In his newer work Lamphere keeps solely to his abstract forms and develops them further until what we see isn't simply a mass of natural stone and stainless steel, but a more complex representation of his creative process. When describing his new work, Lamphere notes, "The natural stone / found object sets the scale and character of the sculpture and the stainless steel creates a context that supports and clarifies. The result is a dialog between materials, light, and a sense-of-place."

This exhibit will be on view through March 19, 2004. Lamphere will join the panel discussion, Art in Public Places, on Friday, March 19, in the Museum's auditorium. The panel will discuss individual works as well as public art in general. Admission is free and the program is open to the public.

# New Acquisitions

Gary Bigbear - *Creation Series II* - 2002  
Kay Cheever Memorial Gift

John Peters - *Arthur* - 2002  
Kay Cheever Memorial Gift

John Peters - *Zippity DoDa* - 2002  
Kay Cheever Memorial Gift

James Bryant - *Portrait of David Crow* - 2002  
Gift from the National Endowment for the Arts, South Dakota Arts Council, and the artist

Marghab Linens - 2004  
Vera Way Marghab Estate, 221 linens

Jerry Ross Barrish - *Scarlet* - 2003  
Gift of Henry H. Corning

Robert Doares - *Salvo Post Office* - 2003  
Gift of Robert Doares

Robert Aldern - *Downpour* - 2003  
Gift of Larry Stine

Arthur Amiotte - *Anog Ite (Double Woman)* - 2003  
Gift of Arthur D. Amiotte

Mary Selvig - 2003  
South Dakota Art Museum Purchase

Harvey Dunn 2003 -  
*Argument with the Sheep Man*  
South Dakota State University Alumni Association



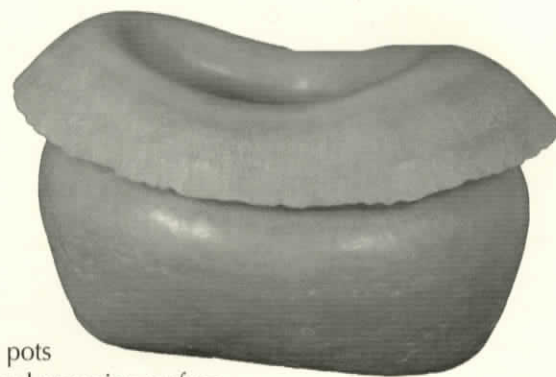
James Van Nuys

*Summer in Duel County*, Oil on Canvas. 2003. 23 in. x 23 in.  
Gift of Ronni Davis and Barbara Rempfer

James Van Nuys' natural affinity for art was encouraged early by a family of amateur painters and professional commercial artists. He graduated from Wilmington College in Ohio in 1978 with a double major in art and music. The unique landscapes of the Black Hills and Badlands are just one of the many reasons Van Nuys calls Rapid City home, and he is regionally known as one of the finest interpreters of South Dakota landscape. His finely detailed paintings capture the subtlest nuances of prairie and forest light.

Mary Selvig

untitled, Ceramic, coiled earthenware, fire peach stain, embossed w/organic texture. 2002. H16" x W27" x D18" South Dakota Art Museum purchase, 2003.



Selvig creates coil construction pots with strong biomorphic forms and engaging surface qualities. At times she often creates post-fired treatments that may incorporate woven plant materials, copper and gold leaf. Much of her work has an ancient quality and brings up romantic notions of primitive cultures. Selvig says that she approaches her art with a sense of vulnerability, such as a prehistoric person would request success in life from the spirit world. "I have great admiration for the resourcefulness of native peoples and draw from the spiritual content of tribal art." Selvig has previously been featured at the South Dakota Art Museum in the spring of 2003 as part of the South Dakota Artist Series.





# Greetings

Greetings to all and best wishes for this New Year. The South Dakota Art Museum has great plans for this year and we want you, our members, to be part of them.

Last year we kicked-off the new membership drive by taking our cue from the Museum's collection with Harvey Dunn's *The Prairie is My Garden*, thinking about the Museum's early formative years. The success of our drive generated an abundance of gifts and donations, and our expectations were met above and beyond our goals. On behalf of the board of trustees and the staff, we send our appreciation and thanks to those who generously gave.

This year we continue with a different Dunn painting for our theme by taking it a step further. From "planting the seed" to "nurturing" the expanded Museum, to providing for its solid growth, we emphasize this concept, by bringing home *Something for Supper*. We have set our goals and continue to be optimistic that both current and new members will contribute toward the future of our Museum, to nurture its growth, if you will.

As you know the need for support for the South Dakota Art Museum is an on-going endeavor, and your contributions are valuable for the success and performance of the Museum. The Museum could not continue to move forward in its exhibitions, public programs, research, collections and new acquisitions without the continuing support from our members.

Soon you will be receiving specific information in the mail regarding membership support levels. At that time we ask that you not only continue your membership but also consider increasing your level of giving to the South Dakota Art Museum.

On behalf of the board of trustees and the Museum's staff, we thank you for your dedication and support of your Museum, the South Dakota Art Museum.

—Ruth Brennen, South Dakota Art Museum Board President



# Members



# Current and Upcoming

Dale Lamphere  
November 12, 2003 –  
March 19, 2004

Internationally recognized sculptor Dale Lamphere's illustrious career spans over 33 years, and in that time he has created over 40 public monuments. Living on a ranch in the shadow of Bear Butte in the Black Hills, Lamphere's work is influenced by the natural beauty of his surroundings. His work blends land form with human form, prairie with hills, spiritual with physical, and classical with abstract.

Seiferle Collection  
January 7 – July 11, 2004

The Seiferle Collection has been called the "largest single gift of Native American art the Museum [SDAM] has ever received." Complete with nearly 200 works of art and nearly 100 books, this gift from Norma and Edwin Seiferle is spectacular. This eclectic collection took years to acquire; it includes rugs, pottery, baskets, paintings, jewelry, bronzes, dolls, beadwork, and stone carvings. On a trip to her alma mater, SDSU, in the 1970s, Norma visited the Art Museum and remarked, "This would be a nice place for our collection to come." SDAM is pleased to present this timeless Native American art to the public.

POTLUCK: An Exhibit of  
Art Quilts  
January 14 – March 28, 2004  
Artist Reception

January 16, 4:30 - 7:00 p.m.  
POTLUCK is an exhibition of art quilts developed by the Piecemakers, a Colorado art quilt critique group. This visual feast will portray over 50 quilts that will tantalize any taste buds. Colorful, energetic, reminiscent, and humorous, this exhibition will appeal not only to those who quilt but also to those who love good food and good company.

Harvey Dunn:  
From the Collection  
February 2 – June 6, 2004  
Experience one of South Dakota's well-known artists, Harvey Dunn, as the Curator of Exhibits carefully selects paintings from SDAM's extensive collection. Paintings on view include *The Prairie is My Garden*, *After School*, and *I am the Resurrection and the Life*.

South Dakota Artist Series:  
Nancyjane Huehl &  
Dan Tackett  
February 5 – May 9, 2004  
Artist Reception  
April 16, 4:30 - 7:00 p.m.

Nancyjane Huehl  
Known as an artist of the Northern Plains, with the use of color and bold

brush strokes, Nancyjane Huehl paints landscapes noted for conveying an emotion of real time and place. Her paintings are of our contemporary world, although they reflect a sense of the past. The range of her topics include rural landscapes and urban downtown lifestyles of the Midwest.

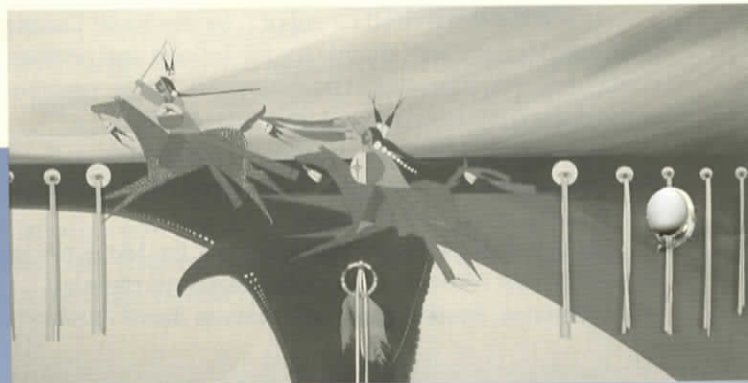
Dan Tackett  
Artist and photographer Dan Tackett has been captivated by the magic of creating images for as long as he can remember. He has worked extensively in medium format and panoramic photography, ever exploring the use of color and black-and-white photography. For the past few years he has concentrated on the "digital darkroom" where his interest is to bring subtle details out of his negatives without "falsifying" the image. The finished black-and-white and color images that are produced are "digital inkjet" prints – known as Giclée.

Lloyd Menard and  
His Printmaking Alumni  
March 24 – July 25, 2004  
Artist Reception  
April 23, 4:30 - 7:00 p.m.

For over thirty years Lloyd Menard has taught printmaking, papermaking and drawing at the University of South Dakota in Vermillion. He also originated Frogman's Print & Paper Workshops, one of the most prestigious printmaking workshops in the world. Since his first print, he knew he had a passion for the process and mastery of printmaking.



*A wind swept memory...*, Nancyjane Huehl



Donald Montileaux



# Exhibitions

Monard and his printmaking alumni will reveal their artistic talents in this extraordinary exhibition.

## Endless Horizons

April 6 – July 18, 2004

### Artist Reception

January 16, 4:30 - 7:00 p.m.

The South Dakota Governor's First Biennial Art Exhibition is a collaborative project presented by the Dahl Arts Center, Rapid City; South Dakota Cultural Heritage Center, Pierre; South Dakota Art Museum, Brookings; and the University of South Dakota Art Galleries, Vermillion. The project is designed to recognize and encourage South Dakota artists, to promote the artistic identity of South Dakota, to celebrate our artistic heritage, and to recognize the importance of and proclaim support for the future of the visual arts and artists of South Dakota. Jeff Fleming, senior

curator at the Des Moines Art Center, selected a show that would not only showcase a variety of styles, media and imagery, but also create a stimulating exhibition of visual art currently being produced in our state. Sponsored by the South Dakota Arts Council.

## South Dakota Artist Series:

Rebecca Mulvaney

and Ray Tysdal

May 15 – August 15, 2004

### Ray Tysdal

A wildlife photographer from Vale, South Dakota, Ray Tysdal's years in the Black Hills coupled with the subsequent years on the South Dakota prairie have given him an appreciation for both the closed-in feelings of the forest and wide-open sky dominated plains. His black and white photography stems from his years as a hunter and fisherman. In Tysdal's photographs the simplicity, beauty and power of nature take on its own personality. "Animals act, react and interact with their own kind, with other kinds and quite often, with us. Modern photography allows these encounters to be frozen and isolated," says Tysdal.

### Rebecca Mulvaney

Artist Rebecca Mulvaney grew up in West Virginia and began taking art lessons at the age of ten. She relocated to South Dakota, where she has been living for the past 10 years. She holds a BFA in painting from Ohio University and is very active with community arts development in South Dakota. Her inspiration for her work stems from the strong natural and spiritual powers of landscapes that draw her beyond the obvious. She notes, "My artistic influences have ranged from traditional academic methods to the imaginative expression of abstract work."

## Carl Grupp: Retrospective

July 27 – November 14, 2004

Carl Grupp explains his artistic motivation saying, "A statement about my beliefs on drawing is like being asked to write a statement on my beliefs on life. I love drawing. I love the wonder of making marks, the simplicity, the immediacy, the limitations, and the search. Drawing is like going on an adventure, sometimes peaceful and pleasant and at other times rough and scary." He is head of the art department at Augustana College in Sioux Falls, South Dakota. His incredible draftsmanship of each print is enhanced by the somewhat surreal flavor of his subjects.

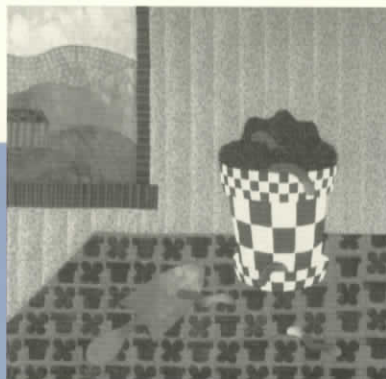
## Warren Rosser

August 4 – December 5, 2004

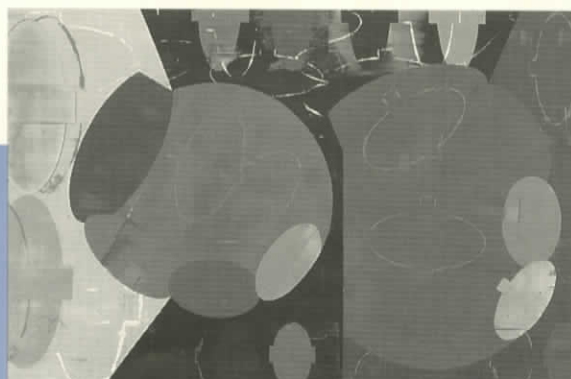
Warren Rosser was born in South Wales, United Kingdom, in 1942. He moved to the United States in 1972 and currently is the chair of the Painting and Printmaking Department at the Kansas City Art Institute. Rosser trained primarily as a painter, but his career has led him down a diverse path from painting to sculpture to assemblage and finally back to painting. What makes his new canvases so special is that now form and space are intertwined on the same two-dimensional plane.



Stainless Steel Sculpture, Dale Lamphere



Dirt Cake, Elaine Spencer, Potluck Exhibition



Tailspin, Warren Rosser

# Reception Highlights



*This past summer and fall we were pleased to host a number of artist receptions.*

During our artists receptions, artists discussed their work and mingled with museum guests. These receptions hosted gallery talks in which each artist spoke candidly about his or her work and opened the floor for discussion. The relaxed atmosphere allowed guests to approach artists and converse about their work. Food and wine were served, and people were welcome to come and go as they pleased. Our receptions were successful in attendance with an average of 130 at each event.

We would like to thank all who attended these events and have shown constant support and commitment to the South Dakota Art Museum. Your attendance is greatly appreciated. The SDAM would like to send a special thank-you to SDSU's food service and the Delta Chi fraternity for the hard work, dedication, and support they provided during these receptions.

This spring we have scheduled three more receptions, and we hope that our attendance will continue to grow.





# Calendar of events



## January

### 15 – Film Series

Hollywood Harems and The Films of Jane Campion  
Museum Auditorium  
7:30 p.m.  
\$3.00, \$2.00 students

### 16 – Artists Reception

POTLUCK: An Exhibition of Art Quilts  
4:30 – 7:00 p.m.  
Snacks provided by the Museum's Guild  
Free and open to the public

### 17 – Quilt Making Workshop (day 1)

Judith Trager, instructor/ POTLUCK Curator  
Multipurpose Room  
10:00 a.m. – 5:00 p.m. – with a lunch break  
\$115 members, \$130 nonmembers

### 18 – Quilt Making Workshop (day 2)

Judith Trager, instructor/ POTLUCK Curator  
Multipurpose Room  
10:00 a.m. – 5:00 p.m. – with a lunch break  
Cost covered by January 17 workshop

### 29 – Film Series

Girls Around the World  
Museum Auditorium  
7:30 p.m.  
\$3.00, \$2.00 students

## February

7 – Kreative Kids  
hands-on art  
workshop  
SDSU Student

instructor(s)  
Multipurpose Room  
10:00 a.m. – 12:00 noon  
\$8 members,  
\$10 nonmembers

### 12 – Film Series

Halving the Bones  
Museum Auditorium  
7:30 p.m.  
\$3.00, \$2.00 students

### 13 – Valentine Card Making Extravaganza!

Multipurpose Room – materials provided  
4:00 p.m. – 8:00 p.m.  
Free and open to the public

### 20 – Beginning Quilt Making Workshop

Linda Louder, instructor  
Tompkins Alumni Center  
10:00 a.m. – 5:00 p.m.  
\$45 members, \$55 nonmembers – plus materials

### 26 – Film Series

Real Women Have Curves  
Museum Auditorium  
7:30 p.m.  
\$3, \$2 students

### 28 – Children's Pottery Workshop (day 1)

Multipurpose Room  
10:00 a.m. – 1:00 p.m.  
\$20 members, \$25 nonmembers

## March

### 6 – Children's Pottery Workshop (day 2)

Multipurpose Room  
10:00 a.m. – 12:00 noon  
Cost covered by February 28 workshop

### 13 – Symphony – Prairie Triptych

South Dakota  
Symphony –  
Sioux Falls  
8 p.m.

### 13 – Kreative Kids hands-on art workshop

SDSU Student instructor(s)  
Multipurpose Room  
10:00 a.m. – 12:00 noon  
\$8 members, \$10 nonmembers



### 18 – Film Series

Night Cries and Girls Like Us  
Museum Auditorium  
7:30 p.m.  
\$3.00, \$2.00 students

### 19 – Panel Discussion – Art in Public Places

Janet Brown, Dale Lamphere and Scott Wallace  
SDAM Auditorium  
7:30 p.m. – 9:30 p.m.  
Free and open to the public

### 20 – Quillwork Workshop - Beginners

Pearl Columbe, instructor  
Multipurpose Room – materials included  
10:00 a.m. – 4:00 p.m.  
\$35 members, \$45 nonmembers

### 27 – Adult Silk Painting

Ann Taecker, instructor  
Multipurpose Room – materials included  
10:00 a.m. – 4:30 p.m.  
\$40 members, \$50 nonmembers

## April

### 2 – Film Series

WhaleRider  
Museum Auditorium  
7:30 p.m.  
\$3.00, \$2.00 students

### 3 – Members' Night Celebration

4:30 p.m. – 8:00 p.m.  
Museum members and guests event

### 3 – Children's Workshop

Silk Sun Catcher  
(ages 7-12)  
Multipurpose Room  
10:00 a.m. – 2:00 p.m.  
\$20 members, \$25 nonmembers

### 10 – Kreative Kids hands-on art workshop

SDSU Student instructor(s)  
Multipurpose Room  
10:00 a.m. – 12:00 noon  
\$8 members, \$10 nonmembers

*The River*, stainless steel sculpture, Dale Lamphere

Paul Goble  
Animal  
A Close Up



# Calendar of events



*Nebushadne*, Gelatin Silver print, Ray Tysdal



*Invincible II*, Rebecca Mulvaney

## April

### 16 – Artists Reception

Endless Horizons, SD Artist Series – Huehl & Tackett

4:30 p.m. – 7:00 p.m.

Free and open to the public

### 16 – Bead Extravaganza!

Elements of Beading Workshop  
Multipurpose Room

5:00 p.m. – 8:00 p.m.

\$30 members, \$35 nonmembers – plus some material costs

### 16 – Bead Extravaganza!

Bead Trunk Sale  
Multipurpose Room

5:00 p.m. – 8:00 p.m.

### 17 – Bead Extravaganza!

Kid's Beading Workshop  
Multipurpose Room

9:00 a.m. – 10:30 a.m.

\$15 members, \$18 nonmembers – plus some material costs

### 17 – Bead Extravaganza!

Right Angle Weave  
Multipurpose Room

11:00 a.m. – 2:00 p.m.

\$30 members, \$35 nonmembers – plus some material costs

### 17 – Bead Extravaganza!

Felted Beads Workshop  
Multipurpose Room

2:30 p.m. – 5:30 p.m.

\$30 members, \$35 nonmembers – plus some material costs

### 17 – Bead Extravaganza!

Bead Trunk Sale

Multipurpose Room

9:00 a.m. – 5:00 p.m.

### 18 – Bead Extravaganza!

Herringbone Beading Workshop  
Multipurpose Room

12:00 p.m. – 2:30 p.m.

\$30 members, \$35 nonmembers – plus some material costs

### 18 – Bead Extravaganza!

Bead Trunk Sale

Multipurpose Room

11:00 a.m. – 4:00 p.m.

### 22 – Glass Blowing Demonstration (three day)

Jon Offutt, Professional Glass Blower  
Demonstrations throughout the day

Located behind the Museum

Free and open to the public

### 23 – Glass Blowing Demonstration

Jon Offutt, Professional Glass Blower  
Demonstrations throughout the day

Located behind the Museum

Free and open to the public

### 23 – Artists Reception

Lloyd Menard and Students  
4:30 p.m. – 7:00 p.m.

Free and open to public

### 24 – Glass Blowing Demonstration

Jon Offutt, Professional Glass Blower  
Demonstrations throughout the day

Located behind the Museum

Free and open to the public

### 24 – Precious Metal Clay (Silver) Workshop

Kimberly Clark, instructor

Multipurpose Room

10:00 a.m. – 4:00 p.m.

Bring a sack lunch

\$125 members, \$145 nonmembers – includes a kit

## May

### 4 – Growth Through Art

3:30 – 4:30 p.m. Multipurpose Room

### 11 – Growth Through Art

3:30 – 4:30 p.m. Multipurpose Room

### 18 – Growth Through Art

3:30 – 4:30 p.m. Multipurpose Room

### 25 – Growth Through Art

3:30 – 4:30 p.m. Multipurpose Room

## June

### 1 – Growth Through Art

3:30 – 4:30 p.m. Multipurpose Room

### 5 – Children's Soap Making

Norma Nusz Chandler, instructor  
Multipurpose Room

10:00 – 12:00 noon

\$12 members, \$15 nonmembers

### 8 – Growth Through Art

3:30 – 4:30 p.m. Multipurpose Room

### 12 – Norwegian Bead Weaving Workshop

Grete Bodøgaard, instructor  
Multipurpose Room

10:00 a.m. – 4:00 p.m.

\$45 members, \$55 nonmembers

# Workshops



Both children and adults have the opportunity this winter and spring to learn new skills and have fun creating! Pre-registration and pre-payment are required. All classes and workshops are held in the South Dakota Art Museum Multipurpose room, unless otherwise stated. To sign up for these workshops and for more information, please call the Museum at (605) 688-5423.

## ADULT WORKSHOPS

### January 17-18 Saturday, Sunday Food Fight: Making a Kitchen Quilt

10:00 a.m. – 5:00 p.m. both days

Multipurpose Room

Bring a sack lunch

\$115 members, \$130 nonmembers

Pre-register by January 9

Join us as quilter Judith Trager shares her techniques as we create small contemporary quilts to decorate our homes. Judith is the curator of the current exhibition, POTLUCK: AN Exhibit of Art Quilts.

### February 13 Friday Valentine Card Making Extravaganza!

(All ages – children welcome)

4:00 p.m. – 8:00 p.m.

Multipurpose Room

Free and open to the public

Come and make your own creations to give to someone special this Valentine's Day! Materials will be provided as well as refreshments.

### February 20 Friday Beginning Quilt Making

10:00 a.m. – 5:00 p.m.

Tompkins Alumni Center

Bring a sack lunch

\$45 members, \$55 nonmembers

Pre-register by February 13

Create and take home a table runner with Lynda Louder from Ivy Lane Quilts. She will cover the basics of quilt making during this one-day workshop.

### March 20 Saturday Pearl Columbe: Quillwork Workshop

(Beginners)

10:00 a.m. – 4:00 p.m.

Multipurpose Room

Bring a sack lunch

\$35 members, \$45 nonmembers

Pre-register by March 12

Pearl Colombe will help participants create quill work pieces on rawhide and sinew strips to display in their home. We are delighted that she is sharing this cultural artistic tradition.

### March 27 Saturday Adult Silk Painting

10:00 a.m. – 4:30 p.m.

Multipurpose Room

Bring a sack lunch

\$40 members, \$50 nonmembers

Pre-register by March 19

Join us as textile artist Ann Taecker teaches her silk painting techniques. Create your own scarf to take home by using a resist technique.

### April 16 Friday Bead Extravaganza! Elements of Beading

(Ages 13 and up)

5:30 p.m. – 8:00 p.m.

Multipurpose Room

\$30 members, \$35 nonmembers

Pre-register by April 9

This is the first class, but not the last! Make a bracelet and necklace while learning about beads, tools, findings, and jewelry making.

### April 17 Saturday Bead Extravaganza! Right Angle Weave

(Ages 13 and up)

11:00 a.m. – 2:00 p.m.

Multipurpose Room

\$30 members, \$35 nonmembers

Pre-register by April 9

This workshop teaches you a beading technique that can be applied to a variety of projects such as bracelets, amulet bags, and necklaces.

### April 17 Saturday Bead Extravaganza! Felted Beads

(Ages 13 and up)

2:30 p.m. – 5:30 p.m.

Multipurpose Room

\$30 members, \$35 nonmembers

Pre-register by April 9

Create your own fiber beads using an ancient technique known as felting. Using wool and water, Leslie will show you how to roll and pinch your way to beautiful beads that can be embellished or left "naked." Great for jewelry and fun accessories.

### April 18 Sunday Bead Extravaganza! Herringbone Beading Workshop

(Ages 13 and up)

12:00 noon – 2:30 p.m.

Multipurpose Room

\$30 members, \$35 nonmembers

Pre-register by April 9

Take the mystery out of this unique stitch. Learn two ways, the traditional and the easy, to begin herringbone while making beautiful jewelry.



# Workshops



## April 22-24 Thursday-Saturday Jon Offutt: Glass Blowing Demonstrations

Free and Open to the Public  
Professional glass blower, Jon Offutt, will demonstrate his techniques in his mobile glass studio. Saturday we will host a family fair with food, drinks and activities to accompany the demonstrations. A blown glass trunk sale will continue throughout the week. Bring the kids!

## April 24 Saturday Precious Metal Clay (Silver) Workshop

10:00 a.m. – 4:00 p.m.  
Multipurpose Room  
Bring a sack lunch  
\$125 members, \$145 nonmembers – includes a kit  
Pre-register by April 16  
Kimberly Clark of Dragonfly Studios, Sioux Falls, will teach participants the popular new trend in jewelry making. The Museum is lucky to have Clark share this unique and wearable art form!

## CHILDREN'S WORKSHOPS

The South Dakota Art Museum has wonderful hands-on workshops aiming to provide a positive environment where children can explore their creative talents and develop their own artistic abilities by making works of art. These workshops are open to the children ages six through twelve.

## February 7 Saturday March 13 Saturday April 10 Saturday Kreative Kids hands-on art workshop

10:00 a.m. – 12:00 noon  
Multipurpose Room  
\$8 members, \$10 nonmembers  
This workshop will explore a different aspect of the museum each month. By spending quality time looking at a particular style in the galleries, children will then create their own work of art in the hands-on activity room to take home with them.

## February 28 Saturday Children's Pottery Workshop (day 1)

10:00 a.m. – 1:00 p.m.  
Multipurpose room  
\$20 members, \$25 nonmembers  
Pre-register by February 20  
Create your own pottery in this exciting two-day clay workshop. The first Saturday children will sculpt the clay and on the second Saturday children will paint the pottery with wild colors.

## March 6 Saturday Children's Pottery Workshop (day 2)

10:00 a.m. – 12:00 noon  
Multipurpose Room  
Cost covered by the February 28 workshop

## April 3 Saturday Silk Sun Catcher

10:00 a.m. – 2:00 p.m.  
Multipurpose Room  
\$20 members / \$25 nonmembers  
Pre-register by March 26  
Join Artist Ann Taecker and make your very own Sun Catcher. She will incorporate lessons in color theory and design composition into a fun project to take home.

## April 17 Saturday Bead Extravaganza! Kid's Beading Workshop

9:00 a.m. – 10:30 a.m.  
Multipurpose Room  
\$15 members, \$18 nonmembers  
Pre-register by April 9  
Kids will get some hands on experience as they learn techniques to create a variety of beaded pieces.

## June 5 Saturday Children's Soap Making

Norma Nusz Chandler, instructor  
Multipurpose Room  
10:00 a.m. – 12:00 noon  
\$12 members, \$15 nonmembers  
Pre-register by May 28  
Kids can create their own scented soaps with the help of instructor Norma Nusz Chandler and be able to take them home to use.

South Dakota State University

**SOUTH DAKOTA Art MUSEUM**

Medary Avenue at Harvey Dunn Street  
Box 2250, SDSU  
Brookings, South Dakota 57007-0899  
(605) 688-5423

E-mail: [sdsu\\_sdam@sdsstate.edu](mailto:sdsu_sdam@sdsstate.edu)

Web: [sdartmuseum.sdsstate.edu](http://sdartmuseum.sdsstate.edu)

Accredited by the American Association of Museums

Free public hours are:

Monday – Friday 10:00 a.m.–5:00 p.m.

Saturday 10:00 a.m.–4:00 p.m.

Sunday and holidays 12:00 p.m.–4:00 p.m.

(Closed on State holidays – please call ahead)

# Bead *Extravaganza!*

Instructors Leslie and Anna from The Bead Monkey stores in Minneapolis & St. Paul present a variety of beading workshops and a 3-day bead trunk sale, April 16, 17 & 18.

## Trunk Sale

The trunk sale will be held in the lower level Multipurpose Room of the South Dakota Art Museum.

Friday, April 16, 5:00 – 8:00 p.m.

Saturday, April 17, 9:00 a.m. – 5:00 p.m.

Sunday, April 18, 11:00 a.m. – 4:00 p.m.

## Classes

Beads for the workshops will be purchased at the Bead Monkey trunk sale where supply lists will be available. Workshops are held in the lower level Multipurpose Room of the South Dakota Art Museum.

**Class sizes are limited, so please pre-register by April 9.**

Tools are provided for the classes; beads and supplies are extra.

## Friday, April 16

### Elements of Beading

5:30 – 8:00 p.m.

Ages 13 and up

\$30 members, \$35 nonmembers

This is your first class, but not your last! Make a bracelet and necklace while learning about beads, tools, findings, and jewelry making

## Saturday, April 17

### Kid's Beading workshop

9:00 – 10:30 a.m.

Ages 7-12

\$15 members, \$18 nonmembers

Kids will get some hands on experience as they learn techniques to create a variety of beaded pieces.

### Right Angle Weave

11:00 – 2:00 p.m.

Ages 13 and up

\$30 members, \$35 nonmembers

This workshop teaches you a beading technique that can be applied to a variety of projects such as bracelets, amulet bags, and necklaces.

## Felted Beads

2:30 – 5:30 p.m.

Ages 13 and up

\$30 members, \$35 nonmembers

Create your own fiber beads using an ancient technique known as felting. Using wool and water, Leslie will show you how to roll and pinch your way to beautiful beads that can be embellished or left "naked." Great for jewelry and fun accessories.

## Sunday, April 18

### Herringbone Beading Workshop

12:00 a.m. – 2:30 p.m.

Ages 13 and up

\$30 members, \$35 nonmembers

Take the mystery out of this unique stitch. Learn two ways, the traditional and the easy, to begin herringbone while making beautiful jewelry.

## Glass Blowing

Join us as we proudly welcome professional Glass Blower Jon Offutt and his mobile glass studio. He will come to Brookings on April 22 through April 24. Offutt has been a professional glass blower since 1995 and holds a MFA from the Glass program of Southern Illinois University. Today he works out of his studio, House of Mulciber, in Fargo, North Dakota.

These three-day glass blowing demonstrations will be open to the public and will consist of multiple demonstrations throughout the day. On Saturday, April 24, there will be Family Fair with food, drinks and children's activities to accompany the glass blowing. A blown glass trunk sale will take place throughout the week and on Saturday. For more information please call the Art Museum at (605) 688-5423.



# MEMBERS NIGHT C E L E B R A T I O N

*As a small gesture of appreciation to our museum members, the South Dakota Art Museum will host a Members Night Celebration. Join us Friday, March 26, 2004, from 5:00 p.m. — 8:00 p.m. for a night of celebration, food, wine, live music, and more.*

*This reception will be exclusively in honor of all museum members and guests, and will become an annual event. We greatly appreciate the support and commitment of all our members.*

*We are honored and privileged to host you and your guest at this event.*

# Thank You

## Prairie Triptych

*Prairie Triptych Symphony* was written by University of South Dakota Professor of Music Stephen Yarbough. On March 13, 2004, at the South Dakota Symphony in Sioux Falls, Music Director candidate, Jung-Ho Pak, will conduct *Prairie Triptych*. Pak has been described by the *New York Times* as a conductor who "radiates enthusiasm," by the *Los Angeles Times* as "a real grabber," and by the *San Diego Union-Tribune* as one of the most "impactful people to watch" in 1998 and 1999. Jung-Ho Pak is recognized internationally as an innovative and accomplished conductor.

Significantly, for the South Dakota Art Museum, this symphony will incorporate three Harvey Dunn paintings from the Museum's collection: *After School*, *The Prairie is My Garden* and *I am the Resurrection and the Life*. The Museum Guild has planned a trip to Sioux Falls for Saturday, March 13. The trip will include dinner before the symphony, and a generous discount on tickets. If you are interested, please call David Merhib at (605) 688-4131.

## Larry Ness:

Larry Ness has been on the Museum's Board since the 1980s, and also serves on the National Music Museum Board, and with the South Dakota Heritage Foundation. As an active member of the arts community, Larry was president of the Dakota Territorial Museum, and on the Board of Trustees of the Center for Western Studies. Currently he is chairman and CEO of the First Dakota National Bank, which was the first bank in the Dakota Territory, chartered in 1872.

Larry has a passion for Plains Indian art and has actively collected since he was a child. He has been fortunate to have the opportunity to inspect the archived back-room treasures of the world's greatest museums.

"The South Dakota Art Museum is poised to become a major destination for art lovers. Our new facilities provide an opportunity to showcase varied and interesting approaches to art," says Larry.

Known to his peers as a "financially savvy man who is exactly what we [the board] have needed and his advice is sober and uncanny," Larry takes time out of his busy schedule to work with the board and is said to have impeccable judgment. Additionally, "His art collection reflects his good taste and understanding of what good art is. It is rare to find an artist combined with a man who understands finances. Most of us are either one or the other, but rarely both."



## Harvey Dunn research project:

The Harvey Dunn collection is one of the cornerstones of the Art Museum's permanent collection. The Museum currently has 91 paintings, 11 drawings and 11 memorabilia objects that make up the collection. Under the leadership of former Director Joe Stuart, the Museum compiled records between 1971-1994 of other works by Harvey Dunn owned privately or at other museums. The South Dakota Art Museum is currently updating those records. With funding provided by the College of Arts and Science, the Museum has hired Kristin Berg to contact owners and collectors of Harvey Dunn works. Kristin has been gathering information about the works, obtaining images, and organizing the information into the Museum's database. You can help us out with this project. If you know of works by Harvey Dunn, please contact Lisa Scholten, Curator of Collections at (605) 688-6702.



## Battleground Update:

In past Museum *Newsletters*, we have shared with you the plight of the Harvey Dunn painting, *Battleground*. During the summer of 2003, the painting was transported to the Upper Midwest Conservation Association in Minneapolis, Minnesota, for treatment to stabilize the painting and ensure its existence for future generations. We are pleased to announce that the work is progressing and we anticipate that the painting will return to the Museum during the summer of 2004. The entire project has been funded as a result of an anonymous donation.

The Museum is now directing its conservation efforts toward the restoration of another work by Harvey Dunn. This illustration's title is unknown and was featured in the March 1935 issue of *Cosmopolitan* magazine. An unveiling of this illustration will take place after the restoration.







# Museum Store

Your source for unique

# gifts.

## Harvey Dunn Reproductions

Now Available in Giclee:

*The Prairie Is My Garden*

*Storm Front*

*Something for Supper*

*After School*

We plan to have several more images available in the coming year. Giclee (jhee-clay or zhee-clay) is an advanced technology in printmaking. Rather than pressing the image on the surface of paper, as in traditional offset printing, thousands of ink dots are sprayed in a fine mist on paper, producing prints that are rich looking and closely resemble the original. Giclee prints, from high-end professional printers, produce a fineness of detail and richness of color unavailable in traditional prints.

## Conservation

Help us conserve our collection! 20% of the gross sales of Harvey Dunn reproductions and merchandise will be donated to the South Dakota Art Museum's conservation efforts. The goal of our conservation efforts includes preserving the collection for future generations to enjoy.

### *The Prairie Is My Garden* Merchandise

T-shirts	Coffee Mugs
Journals	Bookmarks
Canvas Bags	Jigsaw Puzzles

## Featuring the work of area artists:

Pottery: Cherie Ramsdell, Michael Hill, Sue Christensen

Wearable Art: Ann Taecker, Laurie Hartenhoff,  
Diane Corson

Handmade Jewelry: Kimberly Clark, Karen VanderWal,  
Just Plain Jane

Native American Items: JoAnn Bird, Red Cloud  
Indian School

Woven Baskets: Janet Olney

Hand Blown Glass: Jon Offutt, Loy Allen

Books: Paul Goble books and reproductions

Regional Books – we have one of the largest, most  
interesting collection of regional books in the area

# South Dakota Art Museum Membership Application/Renewal

*Our members are vital to the continued development of the South Dakota Art Museum and, in turn, the Art Museum makes our members' lives much richer through the arts.*

## Basic Membership Benefits (Renewed Annually)

- 10% discount on Museum Store purchases.
- 20% discount on Museum classes and workshops.
- Subscription to the *South Dakota Art Museum News* and other Museum mailings.
- Recognition in the annual membership issue of the *News*.

## Contributing Membership Benefits

In addition to your dues, your contribution to the Museum will help to purchase works of art and aid in Museum operations and programming. These contributions also fund publications, scholarly research on collections, conservation of art works, and their restoration. Contributing members receive all of the basic membership benefits plus the special benefits listed below.

## Contributor (\$100 and above)

- Family membership for two adults and their children through age eighteen.
- Basic membership benefits.

## Donor (\$500 and above)

- All benefits above, plus one free gift membership to a friend.
- Recognition for your level of giving on donor panels.

## Supporter (\$1000 and above)

- All benefits above, plus one additional free gift membership to a friend.

## Sustainer (\$5000 and above)

- All benefits above, plus receive recognition as a sponsor or co-sponsor of a SDAM exhibition or program selected in collaboration with the director.

## Benefactor (\$10,000 and above)

- All benefits above, plus receive recognition as a sponsor or co-sponsor of two SDAM exhibitions or programs selected in collaboration with the director.

To join, simply fill out the attached form and mail it to the South Dakota Art Museum with your check or credit card information. Call the Museum Office at (605) 688-5423 if you have questions regarding membership or wish to pursue other ways of giving.

Memberships purchased between March and August have renewal dates of May 1 the following year. Memberships purchased between September and February have renewal dates of November 1 the following year.

Volunteer opportunities are available.  
Call (605) 688-5423 for more information.

*Please join the South Dakota Art Museum.  
We appreciate your support.*

THE SOUTH DAKOTA *Art* MUSEUM NEEDS

You

Full Name(s) \_\_\_\_\_  
Address \_\_\_\_\_  
City \_\_\_\_\_ State \_\_\_\_\_ Zip \_\_\_\_\_  
Telephone (\_\_\_\_) \_\_\_\_\_  
E-mail \_\_\_\_\_

## Basic Memberships

SDSU Student	FREE
Individual	\$30.00
Family	\$40.00

*(Up to two adults in one household and their children through age eighteen.)*

Individual Senior Citizen, age 62 and over	\$25.00
Couple Senior Citizen, age 62 and over	\$35.00

## Contributing Memberships

All contributing memberships are for up to two adults in one household and their children through the age of eighteen. Discounts are available for all those persons listed on the membership.

Contributor	\$100-499
Donor	\$500-999
Supporter	\$1,000-4,999
Sustainer	\$5,000-9,999
Benefactor	\$10,000 and above

Please list children through age 18 to be included in a family or contributing membership:

Name \_\_\_\_\_

Birth Year \_\_\_\_\_

Name \_\_\_\_\_

Birth Year \_\_\_\_\_

Name \_\_\_\_\_

Birth Year \_\_\_\_\_

☐ Check enclosed ☐ Charge, I wish to use

Mastercard/Visa # \_\_\_\_\_

Expiration Date \_\_\_\_\_

Signature \_\_\_\_\_

TOTAL MEMBERSHIP \$ \_\_\_\_\_

Your entire membership is tax deductible to the full extent of the law.

## Membership

South Dakota Art Museum  
Box 2250, South Dakota State University  
Brookings, SD 57007





## Larry Stine

The South Dakota Art Museum bids farewell to a wonderful person dear to our hearts. Dr. Larry Stine passed away this past October and his commitment to the Museum and his love for the arts will never be forgotten.

Originally from Shelby County, Indiana, Larry moved to Brookings in 1963 after completing his graduate studies from the University of Iowa. Larry was the Director of Theater at SDSU for over 20 years. His friends remember him as always being interested in the arts, particularly theater, and as a real gentleman with a funny wit about himself.

Larry contributed in many ways to the Art Museum. He served as a docent and volunteer. He was very active and supportive in the preservation and acquiring of the permanent collection; in particular, he was instrumental in ensuring the Museum's Paul Goble Collection.

The entire South Dakota Art Museum community will miss Dr. Larry Stine.



### BOARD OF TRUSTEES

Ruth Brennan, Rapid City, President  
Sharon Casey, Chamberlain, Vice President  
Diane Anderson, Sioux Falls  
Phyllis Bell, DeSmet  
Marilyn DeLong, St. Paul, MN  
Tim Dougherty, Sioux Falls  
Christine Hamilton, Kimball  
Rolland Johnson, Monument, CO  
Jerry Jorgensen, Brookings  
Maree Larson, Brookings  
Rita Larson, Fowler, CO  
Lanniko Lee, Java  
RaVae Luckhart, Rapid City  
Pat Meyer, Brookings  
Peggy Gordon Miller, Brookings  
Larry Ness, Yankton  
Jack Stengel, Milbank  
Ann McKay Thompson, Pierre  
Susan Wischmeier, Aberdeen

### GUILD DIRECTORS

Elizabeth E. Williams, President  
Donna Ritter, Vice President  
Evie Platt, Secretary  
Sharon Van Riper, Treasurer  
Naomi Gilkerson, Historian  
Dee Kirkbride, Member at Large  
Pam Warren, Member at Large

### STAFF

Lynn Verschoor, Director  
David Merhib, Curator of Education  
Lisa Scholten, Curator of Collections  
John Rychtarik, Curator of Exhibitions  
Patty Bacon, Museum Store Manager/  
Administrative Assistant  
Stefanie Manning, Newsletter Editor

This newsletter is sponsored by: M.A. and Karen Lund at First Bank, Brookings Friends of the Arts and the South Dakota Arts Council. Funds from the State of South Dakota, through the Department of Tourism and State Development, and the National Endowment for the Arts.

Directions: 1½ miles West from Interstate 29 on Hwy 14, turn right on Medary Avenue, 4 blocks to Harvey Dunn Street. Museum is on the right.

14,500 copies of this document were printed by the South Dakota Art Museum at a cost of \$.49 each. MA001 12/03

South Dakota State University

**SOUTH DAKOTA Art MUSEUM**

Medary Avenue at Harvey Dunn Street  
Box 2250, SDSU  
Brookings, South Dakota 57007-0899  
(605) 688-5423

**E-mail: [sdsu\\_sdam@sdstate.edu](mailto:sdsu_sdam@sdstate.edu)**

**Web: [sdartmuseum.sdstate.edu](http://sdartmuseum.sdstate.edu)**

CHANGE SERVICE REQUESTED

NON-PROFIT  
US POSTAGE PAID  
BROOKINGS SD  
PERMIT 24

Free public hours are:  
Monday– Friday 10:00 a.m. – 5:00 p.m.  
Saturday 10:00 a.m. – 4:00 p.m.  
Sunday and holidays 12:00 p.m. – 4:00 p.m.  
(Closed on State holidays – please call ahead)