

South Dakota State University

Open PRAIRIE: Open Public Research Access Institutional Repository and Information Exchange

South Dakota Art Museum Newsletters and Publications

Fall 2009

South Dakota Art Museum Newsletter, Fall 2009

South Dakota State University

Follow this and additional works at: https://openprairie.sdstate.edu/sdam_news



The Collector's Eye: Amish Quilts from the International Quilt Study Center

ABOVE:
Sunshine and Shadow,
circa 1890-1910,
Lancaster County,
Pennsylvania

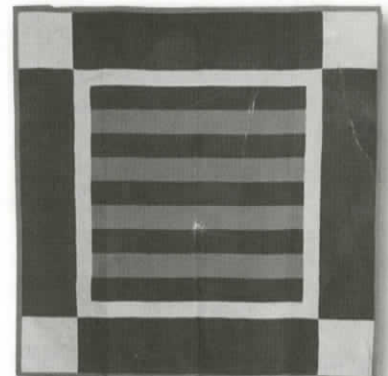
RIGHT:
Bars, circa 1940,
Lancaster County,
Pennsylvania

An exciting and colorful exhibit of Amish Quilts will be on display through April 18, 2010, with a gallery change on December 7th because of the large number of quilts to be displayed.

The collection is on loan from the International Quilt Study Center of the University of Nebraska - Lincoln and features quilts from three distinct Amish regions: Lancaster County and Mifflin County, Pennsylvania, as well as various Amish communities throughout Ohio and surrounding Midwest states.

"This exhibit provides a wonderful opportunity to examine these functional pieces as works of art with glorious color combinations and interesting geometric patterns," says Harriet Swedlund, a former SDSU professor with expertise in textiles and design.

[More on page 2](#)



September 5
— April 1

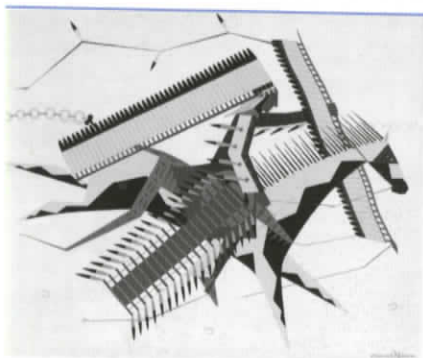
Current and Upcoming Exhibitions



Iktomi and the Buffalo Skull, Paul Goble

Paul Goble: *Iktomi and the Buffalo Skull*
Through April 1, 2010

Marghab Linens:
Applied Art of Embroidery
Through April 1, 2010



Rider, Oscar Howe

Oscar Howe:
Paintings from the SDAM Collection
Through April 1, 2010

The Collector's Eye:
Amish Quilts on loan from the International Quilt Study Center, Lincoln, Nebraska
September 5 — April 1, 2010

Continued from Cover

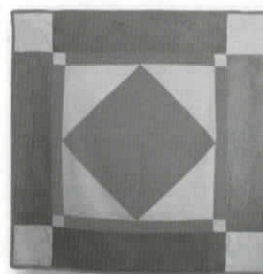
The quilts of each Midwest region are easily recognized by their colors, patterns, and aesthetics.

Classic Lancaster County quilts are composed largely of fine wools. Their unique designs are simple, with flat planes of deep, rich colors.

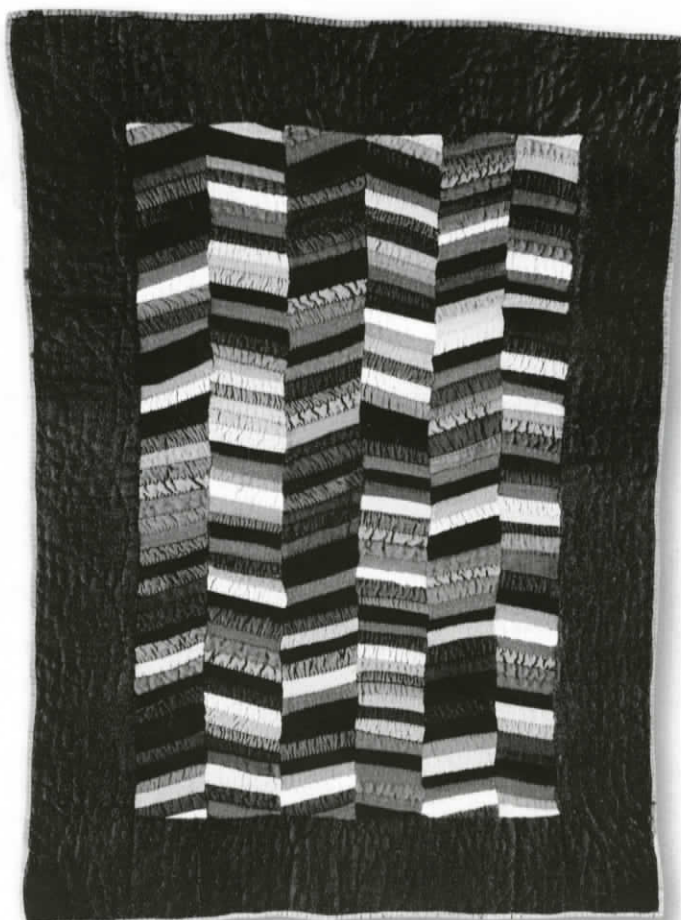
The quilts of Mifflin County are made with cotton, rayon, and wool, and are composed of more intricate designs,

featuring pink, yellow, and green accents.

Many Ohio Amish quiltmakers use black as a background, a unique choice among American quiltmakers. Brilliant pink, yellow, and lavender colors provide a vivid contrast against the black background.



Center Diamond,
Lancaster County, Pennsylvania
circa 1920, maker unknown



Herringbone,
Holmes County,
Ohio, circa
1910-1930,
maker unknown

Various fiber-related workshops and classes are scheduled to take place in the fall and winter in conjunction with the Brookings Area Quilt Guild. See page 8 for a complete listing.



Due to upcoming HVAC construction, the Museum will close certain galleries from April through October of 2010. Please be patient as we strive to be good stewards of the collections. Check our website at www.southdakotaartmuseum.com for updates.

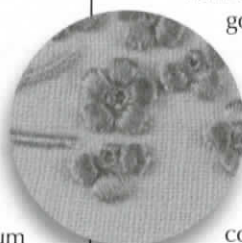


Cock and Bull Story,
Marta Amundson

Don't Fence Me In

September 30 — January 3, 2010

Contemporary art quilts feature Western motifs for a wry look at the American West in fabric. Two quilting groups, the Piecemakers from northern Colorado and the Denver-based Quilt Explorations, combine forces with the Longmont Museum and Cultural Center for this exhibit.



Marghab Linens: *Madeiran Embroidery*

Opening November 1, 2010

Madeiran embroidery is limited to the use of 18 basic stitches and one technique in order to be labeled as "Madeira". The government ensures that only traditional embroidery methods are used. The 18 stitches have been used by Madeiran women for over 250 years with virtually no modifications to materials or methods.

The embroideresses are paid for their work based on the difficulty of the stitch and the number of stitches per embroidered piece. Young embroideresses learn the easier stitches such as Granitos from their mothers or in the government run embroidery school.

The linens exhibited in this gallery were made in Madeira from 1933-1980 by Marghab Linens Ltd. co-founded by Emile and Vera Way Marghab.



Agnes Welch
(Cherokee)

Art of the Basket: *Native American Baskets* *from SDAM collection*

Opening November 1, 2010

The Art of the Basket consists of items from the SDAM Collection. The exhibit will be curated by museum staff and the Thursday Thinkers research volunteer group.

Basketry has been part of Native American cultures for centuries. Grasses, bark, roots, ferns, and twigs have been transformed into works of art. Different tribes use different materials, techniques, and shapes, often times determined by the availability of natural resources and intended use.

The artistry of the makers is illustrated in the shape, texture, design, and creativity evidenced in each basket.



Untitled, Harvey Dunn

Harvey Dunn: *What Lies Beneath*

Opening November 1, 2010

It was not uncommon for Harvey Dunn or his contemporaries to reuse canvases. Most of his paintings and illustrations in the SDAM collection do, in fact, have multiple paintings; one on top of the other! Through modern science

X-radiography and original markings on the canvas/frames, conservators and curators will be able to document and identify the first painting placed on the canvas. Volunteers Carole Johnson and Sue Grant are heading a research project to inventory original periodicals and publication tear sheets that include articles with Dunn's illustrations. X-radiographs will be included in the exhibit along with the original periodicals and other information regarding this exciting (and ongoing) research project.





The Window Seat, Dale Bandel

Dale Bandel: *Centaurs & Flappers*

Aug. 18 — Dec. 13, 2009

The move to a wooded valley near Gary, South Dakota, in 1980 was the beginning of Bandel's interest in sculpting wood. His sculptures have gradually moved toward metal leafed wood, sometimes mixed with other materials. Dale continues his painting even when "the rest of the world", as he calls it, rudely shoves its way in. Devoting 2006 to redevelop his painting style, he has produced mixed media paintings of metal leaf, acrylics, and oil on canvas.

Bandel's recent work combines two of his favorite subjects, the 1920s and Greek mythology.

Rita Tate

Dec. 22 — April 1, 2010

MEET THE ARTIST:

Friday, February 26 at 10 a.m.

PUBLIC RECEPTION:

Friday, February 26 from 4:30 to 7 p.m. with artist presentation at 5:30 p.m.

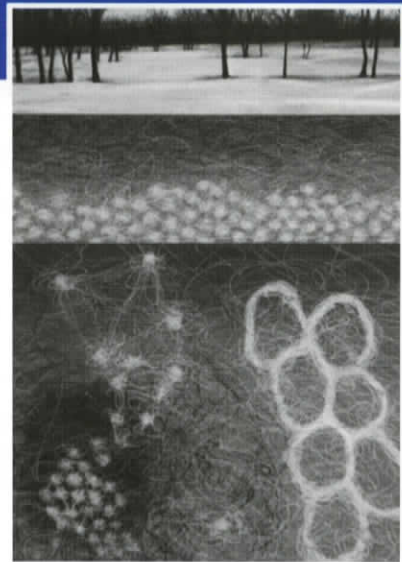


Rita Tate's impeccable style has made her one of South Dakota's most admired artists. This native South Dakotan possesses a unique ability to capture the

spirit of life in her pastels and paintings. Tate's artwork is displayed in private collections across the United States and in Europe, including an original painting hanging in the South Dakota Governor's Mansion. Her work has been featured on the covers of magazines such as *Inside International* and *Arabian Horse World*.



Blue Monday, Rita Tate



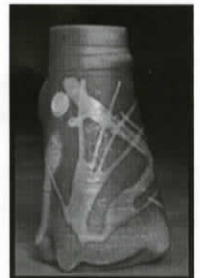
Beyond Appearances 006, Phillip Michael Hook

Phillip Michael Hook & Gerry Punt

January 12 — April 1, 2010

Currently teaching at USD, Phillip Michael Hook derives his subject matter from his love of the unseen world of microscopic imagery. "I've allowed my research of cellular and molecular biology to influence my art making in order to invent imagery."

Gerry Punt currently teaches ceramics classes at Augustana College. "Many of my recent vessels were inspired by the attempted demolition of the Zip Feed Tower. I wondered what is the big deal? Many issues are hard to look directly in the face. I'm trying to fabricate soft symbols that invite questions."



Farmhouse ... On Its Way Out, Gary Steinley

Gary Steinley & David Evans

Images of Place: Paintings & Poems

Opening November 1, 2010

While professors at South Dakota State University, David Evans, South Dakota's poet laureate, and Gary Steinley, South Dakota landscape painter, have long enjoyed one another's work. In 2003 they taught a weeklong workshop "Celebrating Rural Life through Painting and Writing". Thus began *Images of Place: Paintings and Poems*. Steinley's paintings are literally 'images of places' in South Dakota. David Evans then used these paintings as "virtual landscapes," writing a poem inspired by the painting and incorporating his own memories of what he has experienced and read. His poems are the result of this interaction between painting and memory.

GUILD PROGRAMS

The South Dakota Art Museum Guild members provide the museum with wonderful volunteer help. Members can serve as docents and give tours, help with museum projects, and staff the information desk. If you are interested in joining the SDAM Guild or serving as a Museum volunteer, please contact Kathy Tolrud at 692-8520.

September 22
The Artist at Work
Lynn Verschoor,
Director, South
Dakota Art Museum

October 27
**Children's Museum
of South Dakota**
Suzanne Hegg,
Executive Director

November 24
**Behind the Scenes
at the SDAM Store**
Pam Adler,
Store Manager

December 12
**CHRISTMAS PARTY/
Festival of Trees**
Community
Cultural Center

March 23
**Buffalo Ridge Resort
— Vision Restored**
Rachel VandeBrake,
Director, Buffalo
Ridge Resort &
Briana Hoffman,
Rural Learning Center,
Gary, South Dakota

April 27
History Illustrated
Jerry and Faith
McCollough

May 11
**Spring Brunch/
Annual Meeting**
Ralph Steinhauer,
Prairie Photography

All programs/meetings (except December) are held in the South Dakota Art Museum and begin with a social at 9:30 a.m. and program/meeting at 10 a.m.

**PLEASE COME
AND BRING A GUEST!**

SDAM Research & Study Group

Every Thursday morning, a dedicated group of volunteers gathers in the collection storage area of the Museum to research the Museum's Native American collections. This group of six researchers, with varied backgrounds, challenges themselves every week to learn more about one aspect of the collection.

So far, the group has studied Native American moccasins, textiles, and baskets. As a result of this activity, the Museum has complete descriptions of each piece, including cited reference materials.

The research of the basket collection will result in an exhibit *The Art of the Basket*; and in 2011, the research of the Navajo weavings will also result in a planned exhibit.

This project was made possible, in part, by the generous support from Barb and Van Fishback.

FEATURED SDAM GUILD MEMBER

Gloria Thvedt

Originally from northern Minnesota, Gloria moved to Brookings with her husband in 1981. She has spent 35 years teaching first grade at Hillcrest School in Brookings and kindergarten in Sisseton. She also taught adults abroad in South Korea, Egypt, Germany, and Denmark.

Gloria has always had an interest in volunteer activities, and began working with the Art Museum when she retired.



Gloria is fascinated by places rich in history, culture, and art. Most of her time is spent in the museum archives with Lisa Scholten, working with Native American artifacts, where she is learning the depths of museum research.

In addition to her work with the archives, Gloria serves as a greeter at the reception desk. For her birthday, her husband paid for the restoration of a Harvey Dunn painting — *The Homesteader's Wife* — a gift she and the SDAM appreciate dearly.

Gloria likes that the exhibits change frequently, and believes the Museum is a place one can take the family. She thinks that the SDAM is a treasure, and that it is an important addition to both the Brookings community and the state.

Carol Bender and
Gloria Thvedt (right)
work on storage
mounts for Native
American items.



The Museum's commitment to good stewardship has led to the identification and treatment of objects at risk for loss due to deterioration. This recently identified Tlingit polychrome basket is among such objects. Conservator Nicole Grabow from the Midwest Art Conservation Center has repaired and reshaped the basket, and constructed a custom insert to help to maintain its original shape. This basket will be included the SDAM exhibit, *The Art of the Basket* — coming soon.

Museum STORE

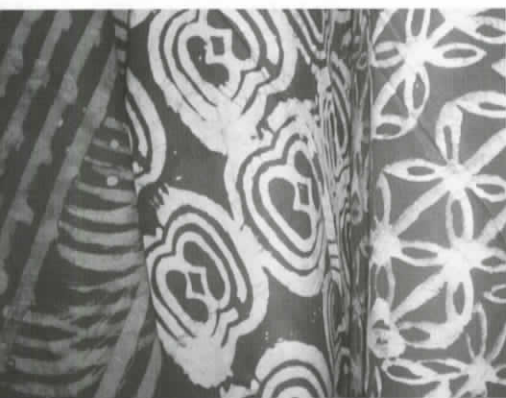
SDAM News

Jill Lynn Nuno Felt Scarves



Jill uses ancient wet-felting techniques combined with contemporary nuno felting to create seamless, sculpted, and functional works of art. The fibers' magical ability to mesh into a tight whole has given her the perfect medium to express her creativity. Although some control can be obtained, working through the process as the piece is created is the focus and passion of Jill's work.

The Museum Store carries these unique scarves created by Jill Lynn. Show off your artistic side by wearing one of her pieces this year!



September, 2009 —
**AFRICAN TEXTILE
SHOW & SALE**

African Textiles

The SD Art Museum Store has a new assortment of African textiles brought directly to Brookings, South Dakota, from Benin, Burkina Faso, and Ghana thanks to the efforts of SDSU Professor Zeno Wicks. In May 2009, Wicks traveled with 25 students to Africa to study ecosystems.

Each piece of fabric is made of cotton and comes in a variety of sizes, colors, and styles. The techniques used to create them include batik, screen printing, block printing, resist, and marbling. They can be used in quilting, as wall hangings, as tablecloths, or fabric for making clothing.

Stop by the Museum Store and experience a part of Africa today!

MONTHLY SPECIALS

SEPTEMBER Catch the Sun — Blown Glass

OCTOBER Warm up with scarves

NOVEMBER Hot drinks and warm soup, Pottery

DECEMBER **Save on ALL your Holiday Shopping!**

E-mail: sdsu_sdartmuseum.store@sdstate.edu

Save 20%
on selected items
with SDAM
membership



SDAM Curator Selected to Attend National Conference

Lisa Scholten, Curator of Collections, SDAM, was chosen to attend "Stewardship of America's Legacy: Answering the Call to Action," held June 16-17 in Buffalo, New York. More than 70 representatives from museums and libraries participated in this national conference focusing on collection stewardship efforts.

Works on Paper gets Conservation Assessment

The SDAM was chosen to participate in a Re-CAP Assessment in 2009. Professional Conservator Jo Anne Martinez-Kilgore spent two days identifying conservation priorities for works on paper and archives in the museum's collection. The assessment was funded by Heritage Preservation.



FIT TO A TEE

These are a few of the many people helping to staff the 14 South Dakota Tourism Visitor Information Centers throughout the state. They are shown proudly wearing SDAM t-shirts. Dolly and her crew from the Valley Springs Info Center say they love our t-shirts and happily promote the museum.

You too can own one of the SDAM t-shirts. Get it at the Museum Store!

The Call of the Prairie and Its Artists Remains Strong

The call of the South Dakota prairie has been powerful for landscape artists. Life on the prairie was an important subject to artists Oscar Howe and Harvey Dunn. But its impact was just as significant for lesser known, but equally skilled, Jess Schlaikjer.



Rychtarik

"There are so many interesting stories about the man," said Rychtarik. "I hope to write a book some day about this South Dakota native and nationally recognized portrait artist."

The stories are unique and endless, and have been compiled by Rychtarik into an article published in the Summer 2009 issue of "South Dakota History," a journal of the South Dakota Historical Society.

Schlaikjer was born in 1897 on the maiden voyage of the ship Kaiser Wilhelm der Gross.

When homesteading opened land in Tripp County in 1909, his family moved from Ohio to north of Carter where scenes of the prairie imprinted themselves onto the artist who ended a long career on the East Coast in the business of painting portraits.

During World War II, he served as an official artist to the Pentagon's War Department, creating inspirational war posters and painting military leaders like Douglas MacArthur, George Patton, and Dwight Eisenhower.

He also painted magazine illustrations for "McCall's," "American Legion Magazine" and "Collier's." Illustrated posters for the American Red Cross also played a significant part in his work.



Schlaikjer wore a business suit when painting portraits of esteemed subjects such as military leaders.

The artist developed a habit of painting donned in a business suit so that he'd always be ready in the event a client would call requesting his service.

"I can't imagine how he did this because I can get paint all over myself and my clothes when I'm working," said Rychtarik who is also a painter.



Taking It to the Streets

Have you seen *The Prairie Is My Garden* on the Brookings Area Transit Association (BATA) people mover in Brookings and the surrounding areas?

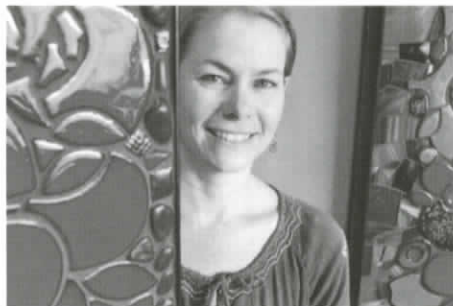
With new graphics technology, you can see the image from the outside but the driver and riders see a clear window.

Activities & Workshops

All events take place at the SDAM unless otherwise stated.

SDAM members receive a **20% discount** on workshops and activities.

OLLI and Brookings Area Quilt Guild (BAQG) members receive a 10% discount.



Mosaics in Glass Workshop

Saturday/Sunday, September 26/27, 2009
Sat., 10 a.m. to 4 p.m., Sun., noon to 4 p.m.
Sheryl Tuorila, Minneapolis, Instructor

Full fee: \$200 (includes all supplies/tools)
Using a glass-on-glass mosaic technique, create a gorgeous agate landscape window hanging while getting an overview of the mosaic world.

Felting with Leslie

Leslie Granbeck, Minneapolis.
Thursday/Friday/Saturday, October 1-3

Learn several different felting techniques. Dry and wet felting, different fibers and colors. Add to your artistic portfolio!

Pre-registration a must for Leslie's classes!

Full fee: \$48 per class
(plus supply fees)

Thursday, 4 to 6:30 p.m.

•Needle Felting (\$10 supplies)

Friday, 9 a.m. to 1 p.m.

•Felted Vessels, Vases and Bowls
(\$20 supplies)

Friday, 2 to 6 p.m.

•"Off the Grid" Felted Scarf (\$20 supplies)

Saturday, 9 a.m. to 4 p.m.

•Silk Dyeing and Nuno Felting
(\$35 supplies)

"Familymation Day"

Saturday, October 10, 10 a.m. to 1 p.m.

Cable Hardin, Instructor

Free !!

Family-friendly screenings and hands-on experience making animated images.

Part of the 2009 SoDak Animation Festival, recommended for ages 6 and older.

Registration is recommended as space is limited. Visit www.sodakanimation.com for more information and to pre-register.

Fabric Embellishing Workshop, Japanese Folded Flowers, Quilted Wearable Art Class, and Trunk Show (BAQG)

Sunday, October 11, 1 to 3 p.m.

Theresa Benett/Allison Tappan,
Brookings, Instructors

Free!

Patchwork on the Prairie, Trunk Show and Presentation

Friday, October 16, 7 p.m.

South Dakota Ag Heritage Museum

Yvonne Hollenbeck will chronicle a single pioneer family's 135 years — through quilts.

Sponsored by the SD Humanities Council Speakers Bureau.

Amish Log Cabin Table Runner quilting class (BAQG)

Saturday, October 17, 10 a.m. to 4 p.m.

Linda Louder, Ivy Lane Quilts, Elkton,
Instructor

Full fee: \$48, plus supply fee

Create a small quilt piece for your table

— let your personal taste help you decide your color palette.

Basic and Nature Photography Classes

Friday/Saturday, November 6/7

Fri., 6-8 p.m., Sat., 10-4 p.m.

Les Vorhis, Royal Tine Images Inc.,
Spearfish, Instructor

Full fee: \$94 — Learn basic (and advanced) photography principles while learning more about your digital or film camera. Only 2 supply items necessary: your camera AND your manual. Accessories optional. Both classroom and "in the field" study sessions.

Reduce, Reuse & Recycle

— **It's Time to Go Green** (BAQG)

Saturday, November 14, 2 to 4 p.m.

Sandy Gamradt & Marilyn Eighmy,
Brookings, Instructors

FREE

Watch Marilyn and Sandy take old clothing and t-shirts and turn them into memory quilts.

Make Your Own Pillow

— **Children's Crayon Quilting** (BAQG)

Saturday, January 16, 2010, 10 a.m. to noon

\$5 registration fee per child

Children (ages 7-11) will make a crayon quilt block, setting the design and turning it into their very own pillow. Pre-registration a must!

Annual ROC Day Celebration

Co-sponsored by the Brookings Fiber Guild

Saturday, January 16, 2010, 10 a.m. to 4 p.m.

ROC Day is celebrated by fiber enthusiasts all over the world as a gathering of friends with common interests in fibers. See local fiber artisans demonstrating their varied crafts.

Valentine Make and Take

Saturday, February 6, 2010, 1 to 3 p.m.

Free! — Kids & Adults

Create your very own Valentine for the special someone in your life. We'll have all the supplies and some creative ideas!



MINI TRUNK SHOW

Quilting & Fiber Arts (BAQG)

Saturday, February 13

The Fall 2009 Film Series

Tuesday, Sept. 22

Pray the Devil Back to Hell

Chronicles the remarkable story of courageous Liberian women who came together—thousands armed with only white t-shirts—to end a civil war and bring peace to their shattered country. 90 minutes.

Tuesday, Sept. 29 **This is Nollywood**

The story of the Nigerian film industry—a revolution enabling Africans with few resources to tell African stories to African audiences. 56 minutes.

Tuesday, Oct. 6. **And Along Came Tourists**

An open minded young German works at Auschwitz Memorial for his civil service obligation. 85 minutes.

Tuesday, Oct. 13 **A Sea Change:**

Imagine a World Without Fish

It seems inconceivable, but scientists warn that such a catastrophe may play out in coming generations. 83 minutes.

Tuesday, Oct. 27

Los Trabajadores/The Workers

Through the stories of two men and through the controversy surrounding the relocation of a day labor site to the misperceptions and contradictions inherent in America's history of both dependence on and abuse of immigrant labor. 48 minutes.

All showings are FREE and open to the public. Films will be shown in the South Dakota Art Museum Alumni Auditorium, to begin at 7:00 p.m.

Tuesday, Nov. 3

Spike and Mike: Sick & Twisted Film Festival
Short animated films. Adult Content. 90 minutes.

Tuesday, Nov. 17 **Dear Zachary**

On November 5, 2001, Dr. Andrew Bagby was murdered in a parking lot in western Pennsylvania. The prime suspect was his girlfriend. 95 minutes.

Tuesday, Dec. 1 **Man on Wire**

A young Frenchman walks on a wire illegally rigged between New York's twin towers. This Oscar-winning documentary reconstructs events that lead up to the "artistic crime of the century." 94 minutes.

Films sponsored by: Margaret Denton, SDSU Film Society and Student Association, South Dakota Art Museum, the William and Harriet Gould Foundation and the SDSU Department of Journalism and Mass Communication. Curated by Asst. Professor Jeff Heinle and SDSU Film Society. For information, call (605) 688-4171 or email Jeff.Heinle@sdstate.edu



Star Quilt Trunk Show and Workshop

Friday/Saturday/Sunday, February 19/21

Fri, 5 to 7 p.m. (\$5)

Sat, 10 a.m. to 4 p.m.

Sun, 12 noon to 4 p.m.

Viola Columbe, Mission, Instructor

Full fee: \$94

See beautiful quilts and hangings Vi has created Friday evening. Learn the basic to advanced intricacies of the Native American star quilts in Vi's classes Saturday and Sunday.

Quilting: Past to Present — Tools and Techniques

Saturday, March 13, 1 to 4 p.m.

Free illustrated demonstration

Linda Louder, Ivy Lane Quilts, Elkton, SD

See and compare old to new patterns, tools, and techniques in the world of quilting.



BEADING TRUNK SHOW

Fri, 5 to 8 p.m.
and all day Sat.

Beading Weekend with Leslie & Cindy

Leslie Granbeck (right) & Cindy Hlavka (left), Fiber Studio, Minneapolis. Instructors Friday/Saturday, March 26/27, 2010

Friday, 5 to 8 p.m.

- Elements of Beading (Leslie) or
- Wire Crochet with Beads (Cindy)

Saturday, 8 a.m. to 12 noon

- Bezel Setting with Seed Beads to Make a Pendant (Leslie) or

Saturday, 1 to 5 p.m.

- Herringbone Stitch Bracelet (Leslie)

Take one class or more, beginner to advanced. **Pre-registration a must!**

Are you interested in learning new things?

The Osher Lifelong Learning Institute (OLLI) is a non-profit membership organization that is dedicated to providing educational opportunities to anyone. Join us and learn for the simple joy of it, without grades, tests, or pressure!

OLLI is offering the following classes in Brookings this fall:

In addition to the courses listed here, 18 classes and numerous single lectures will be offered in Sioux Falls. Members of OLLI can take classes in either Brookings or Sioux Falls.

To learn more about membership fees or to join, please contact Lori at 605-367-5226 or email info@olliuc.org. For more information on upcoming classes, visit our website at www.olliuc.org.

Art Appreciation (Fatih Benzer)

Mon/Wed, 10:30-11:30 a.m., Sept 21-Oct 28.

The Great Depression

& the Dirty Thirties (John Miller)

Tuesdays, 7-9 p.m., Sept 15-Oct 27.

No class Oct 6.

Preparing Your Yard & Garden

for Next Spring (Norm Evers)

Wednesdays, 1-2:30 p.m., Oct 7-Oct 21.

Electronic Communication Demystified

(Joel Hefling) Wednesdays, 5-7 p.m., Sept 23-Oct 14.

Writing a Moment of Your Life (Mary Alice Haug)

Thursdays, 10 a.m.-12 noon, Sept 17-Oct 15.

The Rights of the Accused

in the Criminal Process (Bob Burns)

Thursdays, 1-3:30 p.m., Sept 17-Oct 1.

Navigating the Healthcare System:

How to be an Informed Patient (Didem Koroglu)

Wednesdays 7-9 p.m., Sept 30-Oct 21

Islam 101 (Fathi Halaweish)

Saturdays, 9:30-11:30 a.m., Sept 17-Oct 15

Thank You

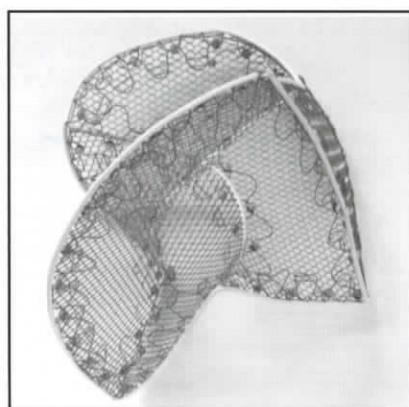
We Appreciate Your Support

Friend					
Rich and Sharon Cutler	Sioux Falls	Black Rhino, Inc., Beth Reams	Brookings	Norman Gambill	Brookings
Jill LaPlante	Brookings	Bruce C. and Ila J. Lushbough	Brookings	Richard L. and Marilyn J. Chapman	Centennial, CO
William M. and Rita Larson	Fowler, CO	Carol A. Johnston	Brookings	Robert D. Butterbrodt	Saint Paul, MN
Roxanne Savaryn-Wicks and Zeno W. Wicks III	Brookings	Daniel C. and Michele A. Kemp	Brookings	Ruth A. Alexander	Brookings
		Dario L. and Virginia M. Enriquez	Plymouth, MN	Scott B. and Deb Dominiack	Brookings
		David and Rina Reynolds	Brookings	South Dakota Magazine	Yankton
		David H. and Mary P. Leonard	Boulder, CO	Steffen A. and Janet M. Helgaas	Sioux Falls
		David L. and Naomi Gikerson	Brookings	Stephen and Catherine Thurman	Sioux Falls
		Della M. and Craig A. Tschetter	Brookings	Stewart W. and Josie L. Moyer	Brookings
		Deloris E. Jensen	Golden Valley, MN	W. Carter and Janet Johnson	Brookings
		Denton and Bonnie Morrison	Sarasota, FL	Woody and Betty Beer-Franklin	Brookings
		Donna L. Ritter	Brookings	Harriet C. Lievan	Minneapolis, MN
		Duane A. and Norma M. Benton	Manhattan, KS	Donald M. and Nancy J. Marshall	Brookings
		Elizabeth K. Rezek	Sioux Falls	IBM Corporation	Research Triangle Park, NC
		Gary and Sally Gramm	Brookings	Richard A. and Carolyn L. Merhib	Sherburne, NY
		Geoffrey W. and Sue S. Grant	Brookings	Beverly A. Erck	Redland, CA
		Gerald G. Frick	Fergus Falls, MN	Lester A. and Rosemary Moeller	Saint Lawrence
		Harold S. Bailey	Brookings	Melvin F. Spinar	Sioux Falls
		Harvey E. and Midge Mills	Brookings	Richard D. Larson and Patty R. Bacon	Volga
		James V. and Penny L. Woster	Sioux Falls	Veneice Williams Marrone	Los Angeles, CA
		John R. and Kathryn M. Romans	Urbana, IL	Christopher and Mary Chase	Brookings
		Jon Anne and Ronald K. Einspahr	Brookings	C. Bruce Hamilton	Omaha, NE
		Joseph M. and Signe M. Stuart	Santa Fe, NM	Curtis M. Twedt	Lincoln, NE
		Joye Ann Billow	Brookings	Gail A. and Rosemary F. Robertson	Brookings
		Kenneth C. & Lois Q. Lippmann	North Salem, NY	L. Bruce Nelson	Smyrna, GA
		L. D. Andrews	Sioux Falls	Lisa M. Pole	Plymouth, MN
		Lillian Osvog	Brookings	Louis P. and Elizabeth E. Williams	Brookings
		Mary M. Gill	Storm Lake, IA	Nancy G. Peterson	Minneapolis, MN
		Michael A. Crane	Sioux Falls	Paul E. and Doris J. Moriarty	Brookings
		Michael D. and Patricia A. Roth	Parker	Robert L. and Nicki L. Brooks	Brookings
Benefactor					
Maree Larson	Brookings				
Sustainer					
Merle L. Gunsalus	Brookings				
Jack and Linda M. Stengel	Sioux Falls				
Supporter					
Bonnie A. Lievan	Brookings				
Margaret H. Denton	Brookings				
Lynn A. and Diane E. Anderson	Sioux Falls				
Lynn Verschoor	Brookings				
David M. and Patricia A. Meyer	Brookings				
George E. and Bobbie Lohr	Littleton, CO				
John T. and Veronna B. Capone	Brookings				
Max M. and Marilyn R. DeLong	Saint Paul, MN				
Tim J. Dougherty & Karen E. Schreier	Sioux Falls				
Donor					
David P. and Shirley A. Lingo	New Hope, MN				
Eddie D. and Christine Hamilton	Kimball				
Jane E. and John Rasmussen	Sisseton				
Marcia K. and David L. Chicoine	Brookings				
Sheila A. Gottsleben	Maitland, FL				
Sue and Curt Wischmeier	Aberdeen				
Xcel Energy	Minneapolis, MN				
James D. Rhodes	Minneapolis, MN				
Contributor					
Stephanie L. Russo	Paris, KY				
Elaine M. Olson	Brookings				
Susie Hendrickson	Brookings				
Jerome C. and Mary E. Fiedler	Brookings				
Mildred S. Hedrick	Kalamazoo, MI				
Helen Gottsleben	Brookings				
Casey Corp., Terry and Sharon Casey	Chamberlain				
Kevin C. and Debra D. Roberts	Hillsboro, MO				
Larry F. and Diane Ness	Yankton				
Mason W. and Janie D. Wheeler	Brookings				
Ruth Brennan	Rapid City				
Altrusa International Inc.	Brookings				
Kim Tyler & Joseph Walker	Hoffman Estates, IL				
Raymond C. Staley	Northwood, ND				
Steve Will and Jane E. Hegland	Brookings				
David F. and Linda H. Marquardt	Sioux Falls				
Midwest Glass, Inc., James Skyberg	Brookings				
Pamela R. and Merritt G. Warren	Brookings				
Sharon Struble	Milwaukee, WI				
Sherwood O. and Elizabeth H. Berg	Brookings				
Wendell A. and Marlys A. Thompson	Brookings				
John J. and Alla Ruffolo	Brookings				
Paula M. Nelson	Platteville, WI				
Esther Hunsaker	Port Orchard, WA				
Norm D. Martin	Brookings				
Richard P. and Joanie S. Holm	Brookings				
Walter C. and Marjorie D. Conahan	Sioux Falls				
Glen E. and Doreen A. Nachtigal	Brookings				
Abbott Laboratories Fund	Princeton, NJ				
Andre P. Larson	Vermillion				

Family Membership

Alan C. and Carole L. Johnson	Brookings
Bernard E. and Elaine Hietbrink	Bella Vista, AR
Carl E. and Cleo A. Edeburn	Brookings
Charles and Eunice Johnson	Rapid City
Charles R. and Marcia K. Mc Mullen	Brookings
Cindy Ostlie	Brookings
Clyde A. and Dee Kirkbride	Brookings
Craig H. and Dee Johnson	Brookings
Cynthia S. Huse	Madison, MN
Dan and Pam Merchant	Brookings
Daniel L. and Kelly J. Beinhorn	Brookings
David A. and Janice K. Evans	Sioux Falls
David and Jean Waligowski	Brookings
David J. and Vanessa E. Merhib	Brookings
David L. and Marilyn J. Foerster	Brookings
David L. Johnson	Amery, WI
David W. and Patricia A. Dartt	Omaha, NE
David W. and Patricia Galipeau	Brookings
Dean E. and Kendra K. Kattelmann	Brookings
Deidre Busacca	Brookings
Dennis D. and Anita A. Whisney	Alpha, MN
Diana Ford	Watertown
DeWayne and Dianne Hawks	Aurora
Douglas C. and Sandy Y. McFarland	Brookings
Douglas D. and Mary O. Malo	Brookings
Edward P. and Joan M. Hogan	Brookings
Fred J. and Ardyne M. Rittershaus	Brookings
Gabriela B. Diniello	Brookings
Gary and Joan M. Isenberg	Brookings
Gary S. and Rosemary L. Chappell	Custer
Helen A. Lewis-Aldridge	Schaumburg, IL
Henry and Alice M. Gehrke	Brookings
Herbert E. and Sydna L. Cheever	Minneapolis, MN
James B. and C. Jody Moritz	Faulton
James L. and Ardis R. Johnson	Brookings
Jason R. and Kyrsten K. Zimmerman	Brookings
Jeffrey and Dee Dee Buettner	Sinai
Jeffrey B. and Joan W. Nelson	Sioux Falls
Jerry L. Simmons	Sioux Falls
Jerry W. and Mary S. Freeman	Brandon
Jim R. Pollock	Pierre
Karl J. and Nadine P. Schmidt	Estelline
David and Kay M. Cutler	White
Ken and Mary A. Haug	Brookings
Kenneth and Catherine Vogele	Rapid City
Kimberly and Bill Retterath	Brookings
Linda and Dave Beulke	Brookings
Lonell L. and Mary R. Moeller	Brookings
Lori A. Bonderson	Sioux Falls
Lynne A. Finn	Brookings
Mark P. Butterbrodt	Martin
Mary A. Thompson	Lindstrom, MN
Mary B. Kraljic and Jim Welch	Brookings
Mary H. and R.J. Thompson	Sioux Falls
Melissa A. Hemmestad	Sioux Falls
Nels H. and DeAnna Granholm	Brookings
Phil R. and Jacquelin M. Blackford	Brookings
Phillip E. and Darlene E. Plumart	Brookings
Raymond R. and Violet J. Dorn	Brookings
Rebecca and William Daugherty	Brookings
Richard G. and Donna J. Wilson	Brookings
Robert V. and Donna Burns	Brookings
Roxanne Kukuk	Watertown
Russell and Beverly Stubbles	Brookings

Recent Acquisition



Untitled, 1992
Steve Keister

This piece is part of a national gifts program entitled "The Dorothy and Herbert Vogel Collection: Fifty Works for Fifty States." Gifted works from the Vogels' Collection of contemporary art will be distributed throughout the nation with works going to a selected art institution in each of the 50 states.



*Keeper of
the Darkness,*
Monoprint by
Roger Broer

Mary A. Bjerke	Volga
Mary Bibby	Brookings
Mary Ellen Aamot	Brookings
Mary Hirko	Brookings
Mary J. Perpich	Brookings
Meredith M. Redlin	Brookings
Michelle J. Peterson	Brookings
Miriam Dailey	Sioux Falls
Monte Feller	Brookings
Barbara L. Blaedorn	Huron
Nancy Kertz	Brookings
Norma A. Linn	Brookings

Orpha M. Leibell	Brookings
Pamela Adler	Volga
Pamela J. Thayer	Cleveland, WI
Pat Boyd	Lead
Mary E. Connelly	Sioux Falls
Phyllis E. Ericksen	Saint Paul, MN
Phyllis M. Bartling	Brookings
Quinn G. Fairchild	Brookings
Rachel Hallanger	Minneapolis, MN
Rebecca J. Converse	Arlington
Rhoda L. Burrows	Brookings
Richard G. and Shirley M. Nichols	Brookings
Richard M. Luther	Brookings
Robert D. Rezek	Sioux Falls
Jean M. Jostad	Brookings
Ronald R. Jarrett	Britton
Ruth D. Royer	Brookings
Sally Scott	Sioux Falls
James R. Weinell	Rosemount, MN
Sharon K. Van Schoiack	Denver, CO
Sharon Schaller	Battle Lake, MN
Silva P. Trautman	Sierra Vista, AZ
Solveig A. Walstrom	Cedar Rapids, IA
Sondra Patrick	Brookings
Rachel Paula	Brookings
Ila M. Kool	Brookings
Susan Gibson	Brookings
Sherry De Boer	Brookings
Thorine Weiland	Madison
Trudy E. Schmieding	Brookings
Valerie A. Hladky	Pearl River, NY
Cathrene M. Voelzke	Brookings
Vicki Hemmestad	Brookings
Viola D. Lightfield	Brookings
Wade Harkema	Volga
Shari Budahl Avery	Brookings
Linda Purrington	Brookings
Christopher G. Kinney	Rapid City
Kathy J. Larsen	Brookings
Coreen L. Lerwick	Spearfish
LeAnn Nelson	Volga
Anita G. Kellerby	Codv. WY

Adele Sudlow	Brookings
Aileen Madsen	Brookings
Sue M. Heuton	Brookings
April M. Boltjes	Timber Lake
Ardelle A. Lundeen Roberts	Brookings
Barry Johnson	Watertown
Beverly A. Craddock	Brookings
Carol M. Glantz	Volga
Carol J. Peterson	Brookings
Charlotte A. Mickelson	Omaha, AR
Linda R. Schumacher	Brookings
Patricia E. Hacker	Brookings
Ingrid A. Chamales	Brookings
Cookie Perkins	Brookings
Marjorie I. Nickisch	Pocatello, ID
Cynthia M. Boltjes	Elkton
Madelyn Francis	Brookings
David E. Huebner	Bushnell
Debra A. Butman-Perkins	Brookings
Delores L. Koepsell	Brookings
Dexter Martin	Brookings
Diane G. Anderson	Eagle River, WI
Diane H. Rickerl	Aurora
Dianna M. Torson	Brookings
Dianne Quinn	New Hampton, IA

Lake Preston
Sioux Falls
Brookings
Colman
Brookings
Brookings
Brookings
Brookings
Waubay
Brookings
Brookings
Brookings
Watertown
Brookings

Dick A. Trapp
Dolores Brage
Dolores Ostroot
Donna C. Lanphere
Mary Miller
Gayle Chapel
Emma Dimit
Mildred T. Denholm
Marge Grorud
Gary G. Aguiar
Gregory T. Ochs
Greta Bodøgaard
Tom Yseth
H. Lynette Olson
Harry L. Birath
Harriet Svec
Helen N. Morgan
Irene A. Cordts
J. Warner Ide
Anne Smolik
Mary E. Tritle
Jane L. Christensen
John B. Shultz
Joan C. Getz
John H. Livingston
Audrey L. Estebo
JoLynn E. Vaughn
Joyce Hodges
Judith R. Peterson
June Eng
Katherine E. Kelly
Kathleen A. Grady
Keith Kernuish
Lyn Sheldon
Lucia B. Forman
Lanniko L. Lee
Diana Zwieg
Les Mansfield
Maxine S. Darnall
Lu Ann Carlson
M. Ken Myers
Martha L. Baker

Beavercreek, OH
Brookings
Brookings
Santa Fe, NM
Brookings
Brookings
Brookings
Brookings
Estelline
Brookings
Minneapolis, MN
Volin
Brookings
Brookings
Brookings
White
Hayward, WI
Faulkton
Hudson, WI
Brookings
Brookings
Sierra Vista, AZ
Harrisburg, IL
Brookings
Brookings
Saint Paul, MN
Brookings
Brookings
Sioux Falls
Brookings
Hudson, WI
Brookings
Moseley Isle Of Man
Watertown
Brookings
Java
Brookings
Cincinnati, OH
Brookings
Sioux Falls
Brookings
Sioux Falls

There are many ways you can support the South Dakota Art Museum by providing funds for educational programs, exhibitions, conservation, artist receptions, acquisitions, and operational endowment.

*We value your support.
Please consider increasing
your membership to the
next level.*

SDSU Student	FREE
Individual	\$30.00
Family	\$40.00

Contributor	\$100-499
Donor	\$500-999
Supporter	\$1,000-4,999
Sustainer	\$5,000-9,999
Benefactor	\$10,000-19,999
Friend	\$20,000-29,999
Champion	\$30,000-39,999
Advocate	\$40,000-49,999
Hero	\$50,000 to 99,999
Angel	\$100,000 & above

Name _____
Address _____
City _____ State _____ Zip _____
Telephone (____) _____
Email _____

☐ Check enclosed, made out to South Dakota Art Museum☐ Mastercard/Visa/Discover

_____ Exp. Date ____ / ____ / ____

Name on card _____

Total membership amount \$

South Dakota State University

SOUTH DAKOTA *Art* MUSEUM

Medary Avenue at Harvey Dunn Street
Box 2250, SDSU
Brookings, South Dakota 57007-0899

Free public hours are:

Monday– Friday 10:00 a.m. – 5:00 p.m.

Saturday 10:00 a.m. – 4:00 p.m.

Sunday and holidays 12:00 p.m. – 4:00 p.m.

(Closed on State holidays) FREE parking available.

Directions: Exit 132. 1 1/2 miles West from Interstate 29 on Hwy 14,
turn right on Medary Avenue, 4 blocks to Harvey Dunn Street.
Museum is on the right.



If anyone you know would wish to receive a copy of the South Dakota Art Museum Newsletter, please contact the Museum. Several past copies will be available on our website at www.southdakotaartmuseum.com. This publication is available both electronically and in print. If you would prefer to receive it online, please let us know. Please make address corrections by contacting the Museum. Mission Statement: As steward of the state's art treasures, the South Dakota Art Museum collects, preserves, and exhibits visual art to increase access and appreciation for the people of South Dakota.

SDAM Hosts Visual Thinking Strategies (VTS) Workshop

Sixty-five teachers, principals, SDSU faculty and graduate students participated in a two-day training seminar hosted by the South Dakota Art Museum in early June to learn how to use art to teach critical thinking in their classrooms.

Educators came from Brookings, Flandreau Indian School, Sioux Falls, Sisseton, Springfield, and Yankton to study Visual Thinking Strategies, a teaching

method that uses age-appropriate art to strengthen children's critical thinking and communications skills. Participants worked with Oren Slozberg, executive director of VTS, to study VTS techniques and how to implement them in their individual classrooms. The VTS workshop was



2009 graduates of VTS Workshop

sponsored by the Cecilia Beirne Endowment, Rita and Bill Larson of Fowler, Colorado, the SD Arts Council, the SD Humanities Council, and the South Dakota Art Museum.

"The beauty of VTS is letting children lead the discussions," said Lynn Verschoor, director SDAM and co-instructor. "It's amazing to listen to preschool-age children when they visit the museum. They're engaged; they are not intimidated, but jump right in and eagerly share their interpretations. Ninety percent of what children learn is from what they see. Give them the chance to talk about what they see and their language skills grow. Provide the right challenges and their success breeds confidence."

RIGHT: Sherri Gullickson, Mickelson Middle School, Brookings, leads a VTS practice session.



Non-Profit
US Postage Paid
Brookings SD
Permit 24

BOARD OF TRUSTEES

Marilyn DeLong, St. Paul, Minn., President
Tim Dougherty, Sioux Falls, Vice President
Jack Stengel, Sioux Falls, Treasurer
Maree Larson, Brookings, Secretary

Diane Anderson, Sioux Falls
Phyllis Bell, DeSmet
Ruth Brennan, Rapid City
Sharon Casey, Chamberlain
Marcia Chicoine, Brookings
Christine Hamilton, Kimball
Jerry Jorgensen, Brookings
Jill LaPlante, Brookings
Rita Larson, Fowler, Colo.
Lanniko Lee, Java
RaVae Luckhart, Rapid City
Pat Meyer, Brookings
Dorothy Morgan, Brookings
Larry Ness, Yankton
Jane Rasmussen, Sisseton
Catherine Voegelé, Rapid City
Ken Voegelé, Rapid City
Susan Wischmeier, Aberdeen

GUILD DIRECTORS

Sharon VanRiper, President
Margaret Denton, Vice President
Mary Ellen Aamot, Secretary
Avalon Bymers, Treasurer
Liz Williams, Historian
Zoe Miller, Member at Large
Pam Warren, Member at Large

STAFF

Lynn Verschoor, Director
Lisa Scholten, Curator of Collections
John Rychtarik, Curator of Exhibitions
Dianne Hawks, Marketing Specialist
Pam Adler, Museum Store Manager/
Program Assistant
Katie VandeVegte, Secretary

This newsletter is sponsored by Brookings Friends of the Arts and the South Dakota Arts Council with funds from the State of South Dakota, through the Department of Tourism and State Development, and the National Endowment for the Arts.