



Students Receive Valuable Training in a Well-Equipped Welding Shop

School of Agriculture

South Dakota State College of Agriculture and Mechanic Arts

BULLETIN

Tuition

The South Dakota State Law provides that rural youth who do not live in high school districts and who have not turned 21 years of age may attend the School of Agriculture in lieu of attending any public high school. The tuition shall be paid by the home district. Printed below is a copy of the law.

SESSION LAWS OF 1933, CHAPTER 99
SECTION 284

Tuition of Non-resident Pupils in High School

"Any pupil who shall successfully complete the work of the eighth grade as established in the State Course of Study, and who holds a common school diploma granted by the County Superintendent or by a Superintendent of a school in an Independent District not under the direct supervision of a County Superintendent or other grade diploma endorsed by the County Superintendent is privileged to continue his school work up to and including the twelfth grade by attending any public school or State Educational Institution of this state or adjoining state, except counties maintaining a public accredited, four-year county High School, furnishing a higher course of study than that offered by his home district for a period not to exceed four years without payment of any tuition except for laboratory fees or individual instruction outside of regular school hours the school district or state educational institution in which such pupil is enrolled as a high school student shall be compensated by the school board of his home district for such instruction as hereinafter provided. *Any pupil shall have the privilege to attend the School of Agriculture maintained at the South Dakota State College of Agriculture and Mechanic Arts in lieu of attending any public high school or State Educational Institution of this state or adjoining state, and the home district of the pupil shall pay such tuition as may be established by the Regents of Education of the State of South Dakota, for such course in agriculture.*"

The Regents have fixed the tuition at fifty-one dollars for eighteen weeks of school. (Non-resident students seventy-six dollars and fifty cents [\$76.50].)

YOU WILL LEARN BY DOING

First emphasis is placed on laboratory, demonstration and discussion courses. Learning by doing is the foundation of nearly all teaching at the South Dakota School of Agriculture. Furthermore, many of our classes are small, allowing semi-individual instruction.

Estimated Student Expenses

The cost of attending the School of Agriculture has always been low. The war situation has raised it considerably and will probably continue to change certain expense items connected with the school. Listed below is our best estimate covering the full eighteen weeks of instruction:

Tuition ¹	\$ 51.00
Board	126.00
Room	32.40
Health fee ²	3.75
Books and supplies ³	8.00
Library fee	1.50
Student Ass'n membership ⁴	6.00
Total	\$228.65

¹Tuition for out-of-state students is 50 percent greater.

²This includes physical examination, ordinary medical service, and hospitalization. It does not include surgery, treatment of the eyes or teeth. A charge of 75 cents per day is made for board while the student is in the hospital.

³These vary with courses pursued.

⁴This money is used to finance extra-curricular activities, speech contests, judging contests and other student affairs.

The above estimate does not include expenses for traveling, laundry, incidentals or clothing.

Opportunities for Graduates

School of Agriculture students, perhaps in ninety percent of the cases, return to the farm or ranch or previous employer to better carry on agricultural activities. Many graduates develop very highly specialized types of farming and ranching such as breeders of purebred livestock, pure seed growers, nurserymen, commercial poultry growers and certain phases of the dairy business. Other worthy students find employment as farm or ranch foremen, herdsman, dairy cow testers, and farm and ranch managers. Still others carry on with their shop work and become proficient welders and/or machinists. The work pursued after graduation depends largely upon the character of the student, his work while in college, his past experience, personality, abilities and ambitions.

We aim to make all our classroom and laboratory instruction practical.

The typical student's day starts at 6:45 a.m., and continues to 10:30 p.m. With classes, meals, studying and required athletics, he has perhaps two hours to himself. Much of this time is apt to be spent participating in one or more other student activities, however.

Who May Attend

There are two types of students who may apply for admission to the school.

1. Any citizen who has completed two years of high school instruction, irrespective of age.

2. Any citizen who has reached his sixteenth birthday on or before registration day.

Applicants for admission must be of good moral character. Students who have attended high school must present credentials showing a complete record of their work. Candidates who have not attended high school must present a certificate showing that they have satisfactorily completed the eighth grade of the public school or its equivalent. A definite interest in agriculture and a farm or ranch background are considered essential. This school is designed for persons who plan to stay on the farm or ranch.

How to Enroll

Persons who wish to become School of Agriculture students should do the following things at their earliest convenience:

1. Write to the director of the school requesting application for enrollment and tuition blanks.
2. Mail application for enrollment blank to the school for consideration.

3. Ask your public school superintendent to send a record of your credits to the School of Agriculture, Brookings, as soon as possible. Eighth grade graduates should present their certificates of graduation at registration time.

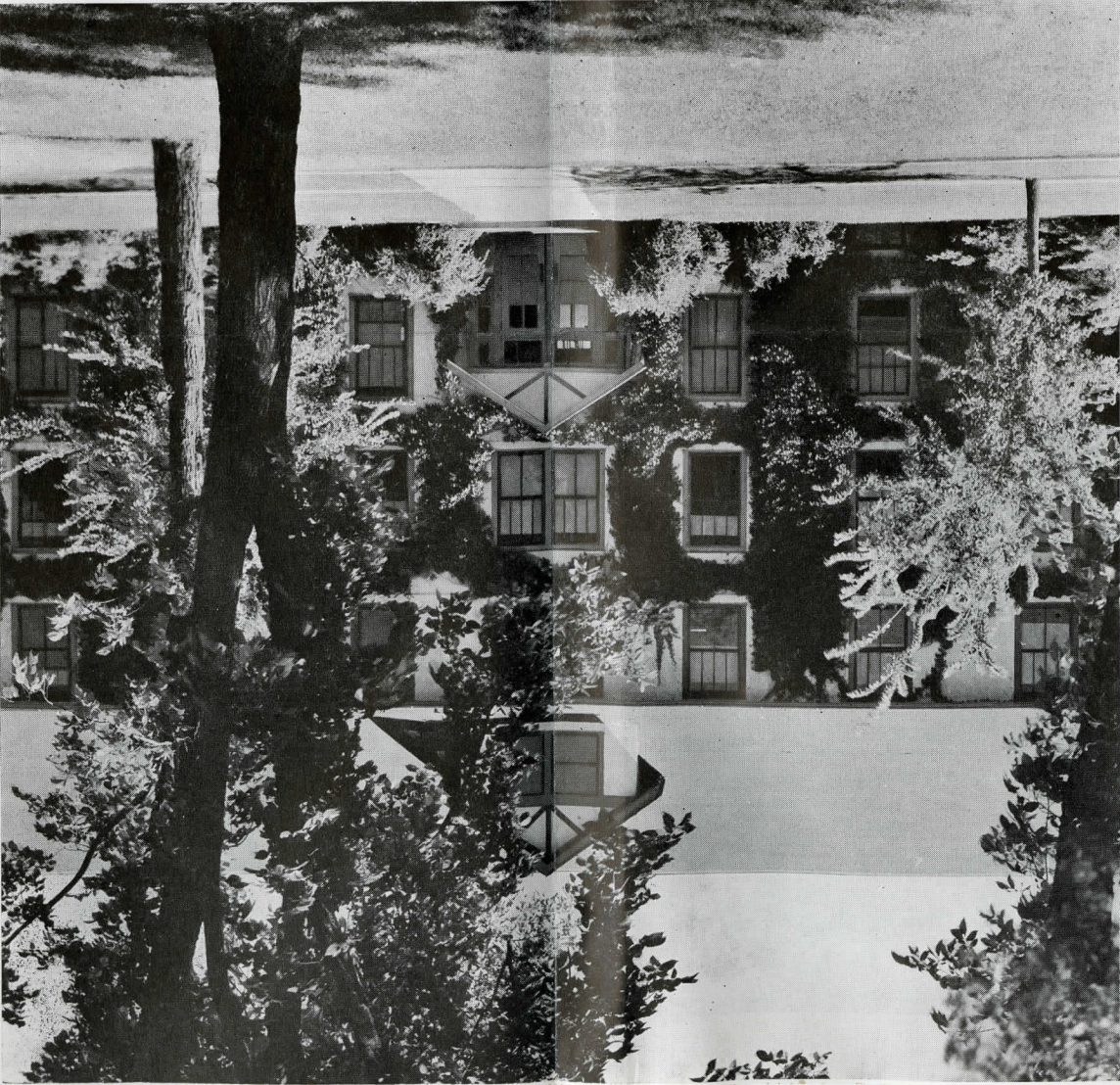
4. Submit a tuition blank to your local school board members for signatures. This certificate must be signed by at least two board members. It must be presented to us on or before registration day. We further suggest that you show your local board members a copy of the South Dakota law as it applies to the School of Agriculture, a copy of which appears on the first page of this folder.

Students Receive Instruction in Farm Butchering



Course of Study

East Men's Hall—The Home of School of Agriculture Students



FIRST YEAR MEN

*Written and Oral Expression
*Agricultural Mathematics
*Agricultural Economics
*Physical Education
Agricultural Survey
Business Law for Farmers
Farm Motors and Power
Farm Forging
Soils
Farm Carpentry
Farm Machinery
Barn Practice (Dairy)
†Farm Chemistry
Soil Management and Fertility
Farm Buildings and Drawing
†Turkey Production
Arc and Acetylene Welding

SECOND YEAR MEN

Crop Production
Seeds and Weeds
Range Grasses
Poultry Diseases
Farm and Ranch Management
†Dairy Products
Dairy Farming
Livestock Marketing
Selection and Care of Meats
Home Management
†Marriage and the Family
*Rural Life
Dietetics and Home Nursing
Child Care and Training
†Turkey Production
†Poultry Management
*Written and Oral Expression
†Farm Insects
†Farm and Ranch Sanitation

FIRST YEAR WOMEN

Crop Improvement
Farm Meats
Range and Pasture Management
Livestock Production Problems
Grain and Forage Crops
Brooding and Incubation
Livestock Improvement
Dairy Farming
Livestock and Care of Meats
Home Management
†Marriage and the Family
*Rural Life
Dietetics and Home Nursing
Child Care and Training
†Turkey Production
†Poultry Management
*Written and Oral Expression
†Farm Insects
†Farm and Ranch Sanitation

SECOND YEAR WOMEN

Crop Production
Seeds and Weeds
Range Grasses
Poultry Diseases
Farm and Ranch Management
†Dairy Products
Dairy Farming
Livestock Marketing
Selection and Care of Meats
Home Management
†Marriage and the Family
*Rural Life
Dietetics and Home Nursing
Child Care and Training
†Turkey Production
†Poultry Management
*Written and Oral Expression
†Farm Insects
†Farm and Ranch Sanitation

ACADEMIC GROUP

*Required
†For both men and women
Algebra
American Government
Physics
Geometry
Chemistry
American History
English

Activities

Our extra-curricular program is of a comprehensive nature. All students are required to participate in at least two scheduled activities, *one of which must be physical training*. Here is a list of activities available to all students:

Dramatics and Speech

Debate, Dramatic and Humorous Readings, Extemporaneous Speaking, Forums, Orations, Plays, Parliamentary Practice, Variety Programs

Judging Practice

Crops, Dairy, Livestock, Meats, Poultry

Physical Training and Athletics

Basketball, Boxing, Calisthenics, Games, Handball, Skating, Volley Ball, Wrestling

Music

Band, Chorus, Orchestra, Trio, Quartet

WHO ARE THE INSTRUCTORS?

Although the School of Agriculture has a small faculty of its own, a high percentage of the work is carried by staff members of the different departments of the college. Thus many specialists are in a position to serve our students. The entire Division of Agriculture staff is available for discussion and are always ready to give sympathetic attention to individual problems.

Calendar

1945—First Term

November 5, Monday
Registration day

November 21, 22, 23, 24, 25
Thanksgiving recess beginning on Wednesday noon

December 21, Friday
Christmas recess begins at noon

1946—Second Term

January 2, Wednesday
Registration day

January 3, Thursday
Beginning of class work at 8:00 a.m.

February 8, Friday
Registration for third term at 4:20 p.m.

February 9, Saturday
Work of second term closes at noon

1946—Third Term

February 11, Monday
Recitations begin at 8:00 a.m.

March 22, Friday
Closing exercises of the School of Agriculture at 10:00 a.m.

March 22, Friday
Work of third term closes at 10:00 a.m.



Physical Fitness Is Emphasized in Our Schedule of Instruction

SOUTH DAKOTA STATE COLLEGE
OF AGRICULTURE AND MECHANIC ARTS
BROOKINGS, SOUTH DAKOTA

DIVISION OF AGRICULTURE
SCHOOL OF AGRICULTURE

1945-46

Dear Friend:

Re: *School of Agriculture*
schedule of instruction

South Dakota State College, through its School of Agriculture, desires to serve the rural youth of the State. In this connection we have one specific objective in mind—adequate training for those persons who expect to make farming, ranching or homemaking their life's work. Our prime job always has been to prepare rural youth for farm and ranch work. This year will be no exception to the policy.

Veterans of World War II will find our program of work practical and are invited to consider the opportunities for our graduates listed on the front page of this pamphlet. Our course of study also makes provision for veterans who wish to complete their high school work preparatory to entering regular college.

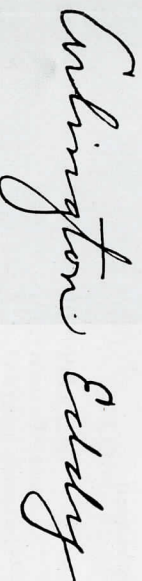
Because of the affect of war conditions on students throughout South Dakota and surrounding territories, we are convinced that many young men and women will be unable to attend high school for a full nine months term this year. Our program of work makes adequate provision for these persons. Students in this category who can meet our entrance requirement and are interested in agricultural and homemaking subjects should consider enrolling in our school.

Our course of study is intensively arranged. Courses offered in any one year are divided into three six-week periods. Each unit of instruction, except subjects listed in the academic group, stands alone. The first six-week period is completed before Christmas holidays. Six-week period number two begins immediately after New Year's Day and continues until the middle of February. The third or last period is completed late in March. A new group of vocational subjects is selected each period. Thirty hours of work per week is required. The schedule includes Saturday morning classes.

~~A certificate of graduation will be presented to those who satisfactorily complete their work. Presentation will be made at the regular commencement exercises.~~

Address communications requesting literature, application blanks and instructions to: Director, School of Agriculture, State College Station, Brookings, South Dakota.

Cordially yours,



Director