

South Dakota State University

Open PRAIRIE: Open Public Research Access Institutional Repository and Information Exchange

SDSU Extension Fact Sheets

SDSU Extension

1961

When Your Coat Needs a New Lining

Cooperative Extension, South Dakota State University

Follow this and additional works at: https://openprairie.sdstate.edu/extension_fact

Historical, archived document

Do not assume content reflects current scientific knowledge, policies, or practices.



For current policies and practices, contact SDSU Extension

Website: extension.sdstate.edu

Phone: 605-688-4792

Email: sdsu.extension@sdstate.edu

SDSU Extension is an equal opportunity provider and employer in accordance with the nondiscrimination policies of South Dakota State University, the South Dakota Board of Regents and the United States Department of Agriculture.

WHEN YOUR COAT NEEDS

a new lining . . .

Does your coat need a new lining? It is easy to reline it yourself, if you take time to do careful work. Follow these steps.

1. Use the old lining as a pattern for making the new one. Before ripping out the old lining, mark with thread or chalk, notches on sleeves and armholes to be matched when setting in the new lining. (Fig. 1)



Figure 1

Mark the points on sleeve lining where elbow fullness begins and ends.

2. Rip out the old lining and take it apart, being careful not to cut, tear, or stretch it at the seams. Mark all darts. Press the best sleeve and front, and the whole back.

3. Fold and cut the lining down the center back, cutting off the center back pleat if there is one. Cut off the seams on the stitching line. It is better to add new seam allowances and a new pleat, because these are not always straight on ready-made coats (Fig. 2).

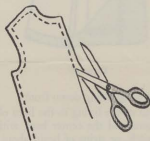


Figure 2

4. Compare the measurements of the lining with those of the coat—across the back of shoulders and at the bottom of the armhole. Linings often shrink after they are put in, so the new one may need to be cut larger.

By Anna D. Walker, Extension Clothing Specialist.
(Information from U.S.D.A.)

a new lining . . .

WHEN YOUR COAT NEEDS

Cooperative Extension Service


5. Lay out the lining pieces on a piece of wrapping paper 39 inches wide to estimate the yardage needed. Allow for a 1-inch pleat down center back. Usually twice the coat length plus the sleeve length is ample for a straight coat (Fig. 3).

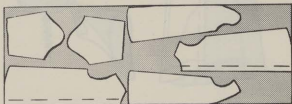


Figure 3

6. Spread the new lining material on a flat cutting surface. Arrange pattern on the material, with lengthwise threads matching. Lay the center back in 1 inch from the fold for the back pleat. Add $\frac{1}{2}$ inch more, if the lining needs to be seamed down the back.

7. Allow no less than $\frac{1}{2}$ inch on all edges for seams. Mark darts, and points for matching. Baste, stitch, and press the body and sleeve seams. Do not stitch the shoulder seams.

8. Baste pleat at center back. Fold and baste the shoulder darts. Press. Catch-stitch shoulder darts about 2 or 3 inches down; center pleat, about 2 inches at the neck, about 1 inch at the waist and hem if needed (Fig. 4)

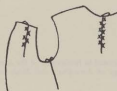


Figure 4

9. Turn, baste, and press the seam allowance on the front edge of the lining, at the back of the neck, and the back shoulder line.

10. Turn the coat wrong side out and place on dress form or hanger. Pin the back lining to the back of the coat, matching armholes back, and side seams.

11. Tack seams of lining loosely to seams of coat, using running stitches about $\frac{1}{2}$ inch long (Fig. 5).

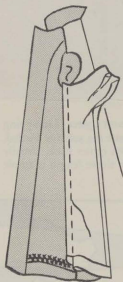


Figure 5



Figure 6

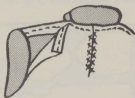


Figure 7

12. Tack the front shoulder of the lining to the shoulder seam of the coat.

13. Baste and sew the lining down the front, over the original stitching line, to about 12 inches of the hem (Fig. 6).

14. Baste the back neckline and the shoulder over the neck and shoulder seams of the coat. Slip-stitch (Fig. 7).

15. Stitch around armholes of the sleeve linings, about $\frac{1}{16}$ inch less than the seam allowance, to prevent stretching. Turn under full seam allowance, baste, and press.

16. Slip lining into the sleeves, with underarm seams and top of shoulder matching. Pin around armholes. Baste, press, and sew with hemming stitch using double thread.

17. Turn under a hem allowance in sleeve lining, baste, press.

18. Baste hem to sleeve, about $\frac{1}{2}$ inch above hem line with underarm seams matching. Fold the lining hem back to the basting line and sew to the sleeve. This keeps the lining from drawing and pulling at the coat sleeve (Fig. 8).



Figure 8

19. Check hem of the lining with that of the coat, so that it is about 1 inch shorter than the coat. Finish off with a 1 inch hem. Machine-stitch the first fold so the hem will lie flat (Fig. 9).

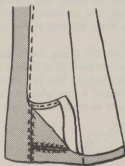


Figure 9

20. Finish sewing lining down front.

21. Join hem of the lining to the hem of the coat at the side seams and the center back with French tacks, chain stitch, or strips of braid about 2 inches long.