

South Dakota State University

Open PRAIRIE: Open Public Research Access Institutional Repository and Information Exchange

SDSU Extension Circulars

SDSU Extension

6-1946

Grassed Waterways

South Dakota State University Cooperative Extension

Follow this and additional works at: https://openprairie.sdstate.edu/extension_circ

Recommended Citation

Cooperative Extension, South Dakota State University, "Grassed Waterways" (1946). *SDSU Extension Circulars*. 849.

https://openprairie.sdstate.edu/extension_circ/849

This Circular is brought to you for free and open access by the SDSU Extension at Open PRAIRIE: Open Public Research Access Institutional Repository and Information Exchange. It has been accepted for inclusion in SDSU Extension Circulars by an authorized administrator of Open PRAIRIE: Open Public Research Access Institutional Repository and Information Exchange. For more information, please contact michael.biondo@sdstate.edu.

Historic, archived document

Do not assume content reflects current scientific knowledge, policies, or practices.



For current policies and practices, contact SDSU Extension

Website: extension.sdstate.edu

Phone: 605-688-4792

Email: sdsu.extension@sdstate.edu

SDSU Extension is an equal opportunity provider and employer in accordance with the nondiscrimination policies of South Dakota State University, the South Dakota Board of Regents and the United States Department of Agriculture.

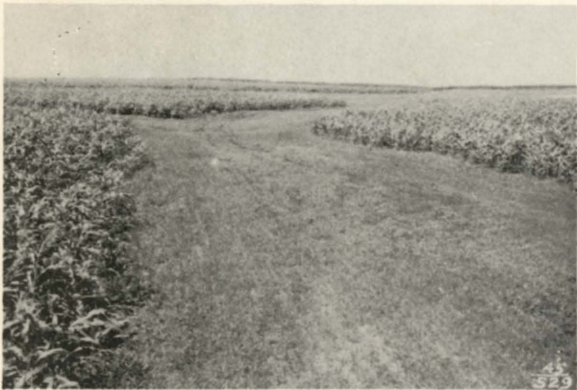
Grassed waterways



Don't let this happen

Do you know:

That gullies may be prevented in the water courses that run through the croplands by seeding them to a sod forming grass and maintaining the sod cover?



Do this and it won't happen

What to do

If the draw has started to cut, level and pack the soil before planting the seed with a drill.

If it has started to cut, drill the seed in the stubble.

Use a good sod forming grass mixture.

Use kinds of grasses and rates of seeding recommended for your area.

Maintain the waterway by maintaining a good sod cover.

Mowing the weeds before they seed.

Not pasturing the grass.

Reseeding or sodding any open spaces.

Lifting tillage implements when crossing.

Not using as a roadway or livestock lane.

Cutting the grass for hay or seed.



Support the grassed waterway by using recommended tillage practices or by contouring or terracing the croplands above the waterway.

If the terraces are emptied into it construct them so as to prevent silting.

Protected with contours and terraces

Photos by Soil Conservation Service

AGRICULTURE EXTENSION SERVICE

South Dakota State College - Soil Conservation Service
United States Department of Agriculture, Cooperating

630.732
5087.26 Ext. Offset Circular 6

June, 1946

No. 6
C.3